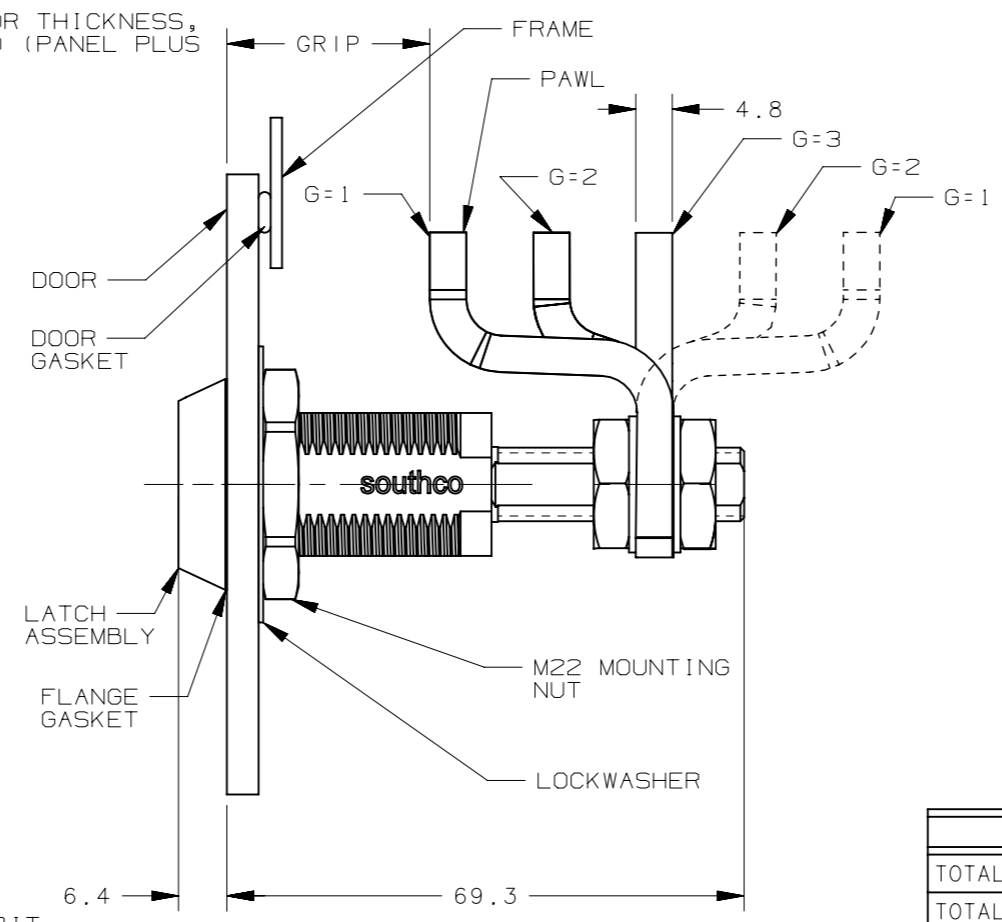
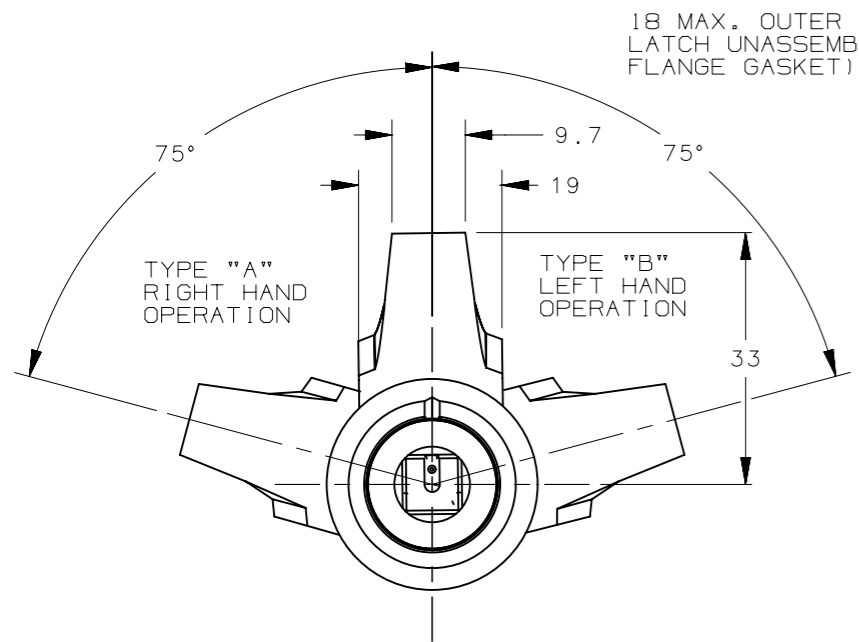
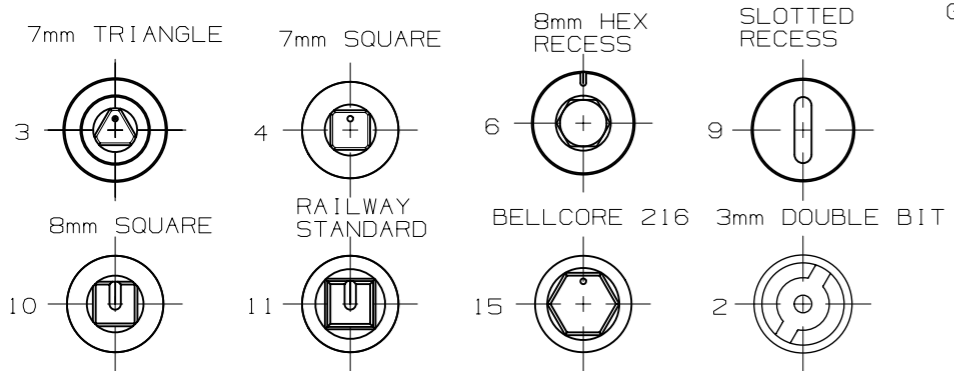


| REVISION HISTORY | | | |
|------------------|-----------|---------|-----------------|
| REV | DATE | BY | DESCRIPTION |
| D | 23JAN2018 | ANT/CMS | PRN: P2018-0215 |



NOTES

- OPERATION: 195° TURN OF DRIVER CAUSES PAWL TO ROTATE AND PULL UP AS SHOWN.
- DETERMINE TOTAL GRIP BY ADDING: MAX. OUTER DOOR THICKNESS (INCLUDE ALL ACCESSORIES) PLUS COMPRESSED FRAME GASKET AND FRAME THICKNESS.
- INSTALLATION:
 - INSERT LATCH INTO HOLE IN DOOR. CHECK FOR PROPER ORIENTATION AND OPERATION USING PAWL.
 - INSTALL USING LOCKWASHER AND MOUNTING NUT (M22 ACROSS FLATS). TIGHTENING TORQUE IS 20 Nm.
 - INSTALL JAM NUT, LOCKWASHER, PAWL, LOCKWASHER AND JAM NUT ON SHAFT. ADJUST JAM NUTS TO POSITION PAWL AT CORRECT GRIP (WITH LATCH CLOSED). TIGHTEN JAM NUTS (20 Nm MAX TORQUE) USING TWO 17mm WRENCHES.
- CAUTION: ADJUST PAWL SO NO MORE THAN 7.9Nm TORQUE IS REQUIRED TO CLOSE LATCH.

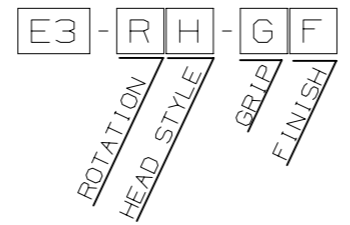


| GRIP TABLE | | | |
|---------------------------------|----------------------|-----------------|-------------------|
| TOTAL GRIP RANGE (FORWARD PAWL) | 16.4-32.2 | 30.4-46.1 | 43.9-59.6 |
| TOTAL GRIP RANGE (REVERSE PAWL) | 71.3-81.2 | 57.6-73.3 | |
| MAX OUTER DOOR THICKNESS | 18 | 18 | 18 |
| GRIP STYLE (G) | 1 (DEEP OFFSET PAWL) | 2 (OFFSET PAWL) | 3 (STRAIGHT PAWL) |

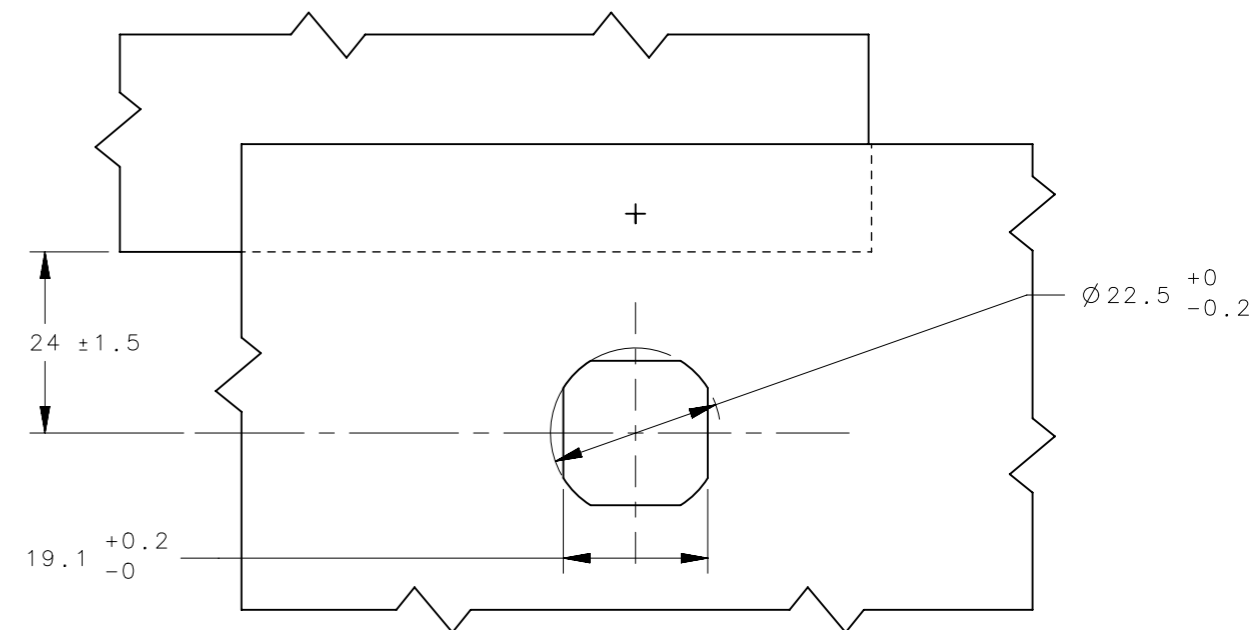
| DRIVER STYLE | KEY PART NUMBER |
|------------------|-------------------------|
| 3mm DOUBLE BIT | E3-2-1 |
| 7mm TRIANGLE | E3-3-1 |
| 7mm SQUARE | E3-4-1 |
| 8mm HEX RECESS | NOT SUPPLIED BY SOUTHCO |
| SLOTTED RECESS | NOT SUPPLIED BY SOUTHCO |
| 8mm SQUARE | E3-8-1 |
| RAILWAY STANDARD | E3-14-1 |
| BELLCORE 216 | E3-12-1 |

| COMPONENT | MATERIAL | FINISH |
|---------------------------------|----------------------------------|------------------------|
| HOUSING | ALUMINUM | ANODIZED OR PC |
| CAP | ALUMINUM | ANODIZED OR PC |
| BUSHING | ALUMINUM | ANODIZED OR PC |
| RETAINER | STAINLESS STEEL | NATURAL |
| SPRING | STAINLESS STEEL | NATURAL |
| O-RING | BUNA-N | NA |
| SLEEVE | STAINLESS STEEL | PASSIVATED |
| CAM | ALLOY STEEL | ZINC IMMERSION COATING |
| SHAFT (ANODIZED) | STAINLESS STEEL | PASSIVATED |
| SHAFT (PC VERSION) | STEEL | ZINC PLATE |
| PIN | STEEL | ZINC PLATE |
| PAWL (ANODIZED VERSION) | STAINLESS STEEL | PASSIVATED |
| PAWL (PC VERSION) | STEEL | ZINC PLATE |
| SCREW (ANODIZED VERSION) | STAINLESS STEEL | PASSIVATED |
| SCREW (PC VERSION) | STEEL | ZINC PLATE |
| LOCKWASHER (ANODIZED VERSION) | STAINLESS STEEL | PASSIVATED |
| LOCKWASHER (PC VERSION) | SPRING STEEL | ZINC PLATE |
| MOUNTING NUT (ANODIZED VERSION) | POWDERED METAL (STAINLESS STEEL) | NATURAL |
| MOUNTING NUT (PC VERSION) | ZINC ALLOY | CHROMATE |
| GASKET SEAL | NEOPRENE | NA |
| SEAL | NITRILE RUBBER | NA |

STANDARD PART NUMBER



- R = ACTUATION STYLE
- 1 = LATCH SHIPPED UNASSEMBLED, TYPE A (TURN CAP CLOCKWISE TO LATCH)
- 22 = LATCH SHIPPED UNASSEMBLED, TYPE B (TURN CAP COUNTER-CLOCKWISE TO LATCH)
- G = GRIP
- 1 = DEEP OFFSET PAWL (27.4 OFFSET)
- 2 = OFFSET PAWL (13.7 OFFSET)
- 3 = STRAIGHT PAWL (NO OFFSET)
- F = COLOR AND FINISH
- 59 = BLACK HARD ANODIZE
- 06 = CLEAR POWDER COAT
- 56 = BLACK POWDER COAT
- 76 = SILVER POWDER COAT



| | | | |
|--|-----------------------------------|----------|--|
| THIRD ANGLE PROJECTION | MILLIMETERS [IN] | | CONNECT • CREATE • INNOVATE |
| | TOLERANCES UNLESS OTHERWISE NOTED | | |
| ALL DIMENSIONS WITHOUT TOLERANCES ARE FOR REFERENCE ONLY. | DESCRIPTION | | COMPRESSION LATCH ALUMINUM E3 ADJUSTABLE GRIP |
| | SIZE | SYSTEM | |
| PROPRIETARY ITEM | A3 | NX | J-E3-12-13 |
| EXCEPT FOR USES EXPRESSLY GRANTED IN WRITING, INFORMATION DISCLOSED HEREON IS CONFIDENTIAL AND ALL RIGHTS, PATENT AND OTHERWISE, ARE RESERVED BY SOUTHCO, INC. | PER ASME Y14.5M-1994 | DRAWN BY | DATE |
| | | PTG/YGC | 07AUG2015 |
| | | SCALE | 1:1 |
| | | SHEET | 1 OF 1 |