

REV	DATE	DESCRIPTION	DATE	DATE	DESCRIPTION
	A	10OCT2011		MJS/MGG	PRN: P2011-1243
B	02NOV2011	MJS/MGG	PRN: P2011-1405		
DRAWN/CHKD		DRAWN/CHKD		DRAWN/CHKD	
DATE		DATE		DATE	
MJS/MGG		MJS/MGG		MJS/MGG	
PRN: P2011-1243		PRN: P2011-1405		PRN: P2011-1405	
PROPRIETARY ITEM - EXCEPT FOR USES EXPRESSLY GRANTED IN WRITING INFORMATION DISCLOSED HEREON IS CONFIDENTIAL AND ALL RIGHTS, PATENT AND OTHERWISE ARE RESERVED BY SOUTHCO, INC.		PROPRIETARY ITEM - EXCEPT FOR USES EXPRESSLY GRANTED IN WRITING INFORMATION DISCLOSED HEREON IS CONFIDENTIAL AND ALL RIGHTS, PATENT AND OTHERWISE ARE RESERVED BY SOUTHCO, INC.		PROPRIETARY ITEM - EXCEPT FOR USES EXPRESSLY GRANTED IN WRITING INFORMATION DISCLOSED HEREON IS CONFIDENTIAL AND ALL RIGHTS, PATENT AND OTHERWISE ARE RESERVED BY SOUTHCO, INC.	
DATE		DATE		DATE	
09SEP1998		09SEP1998		09SEP1998	
NRW		NRW		NRW	
SCALE		SCALE		SCALE	
1:1		1:1		1:1	
DRAWING NUMBER		DRAWING NUMBER		DRAWING NUMBER	
J-E3-14XX		J-E3-14XX		J-E3-14XX	

PART NUMBER: E3-YYVV-WWX

VV = HEAD STYLE (SEE TABLE A)
 WW = PAWL STYLE (SEE TABLE B)
 X = FINISH (SEE TABLE C)
 YY = ROTATION TYPE
 14 = CW ROTATION
 21 = CCW ROTATION

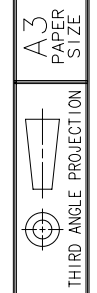
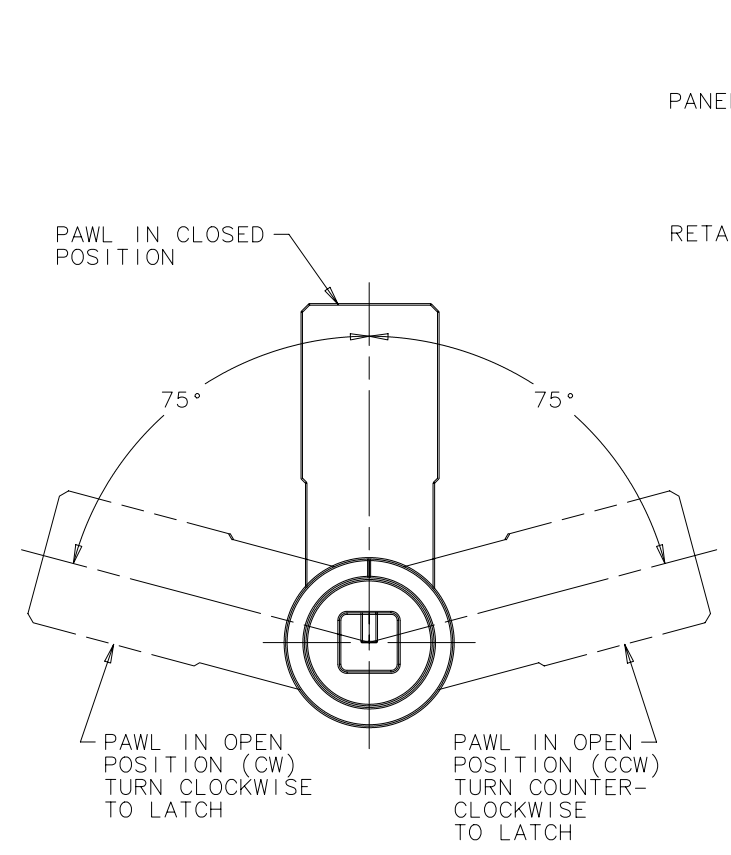


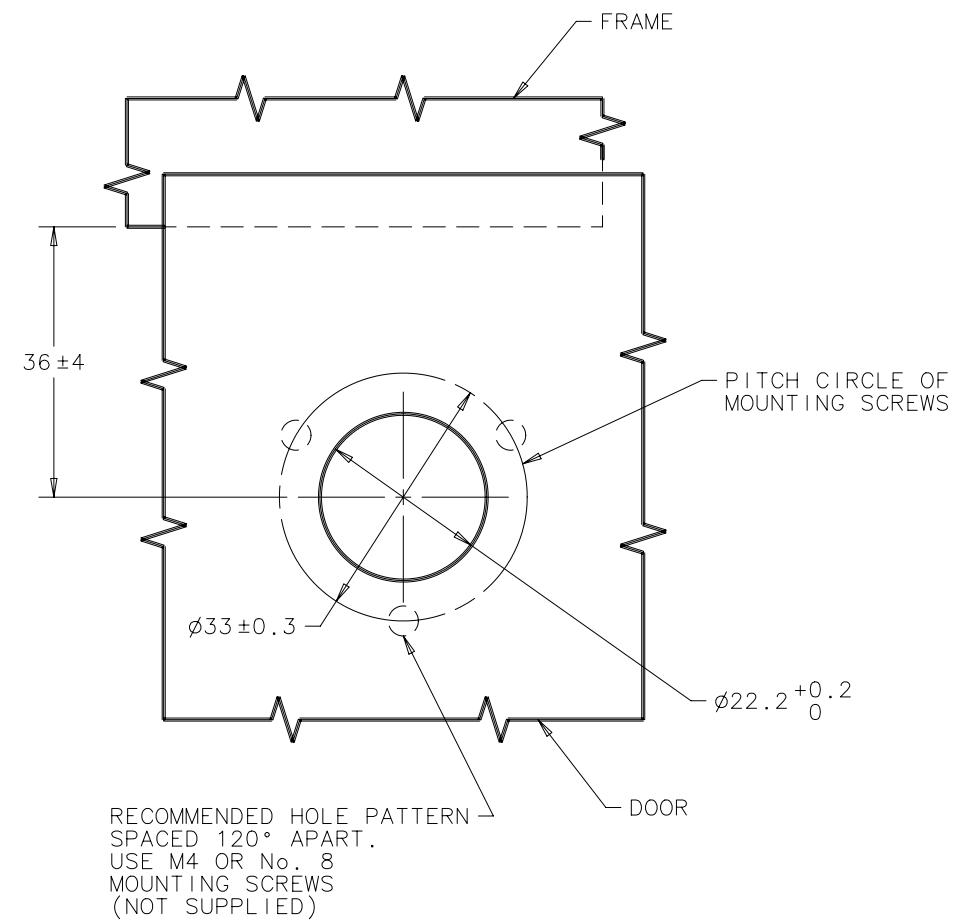
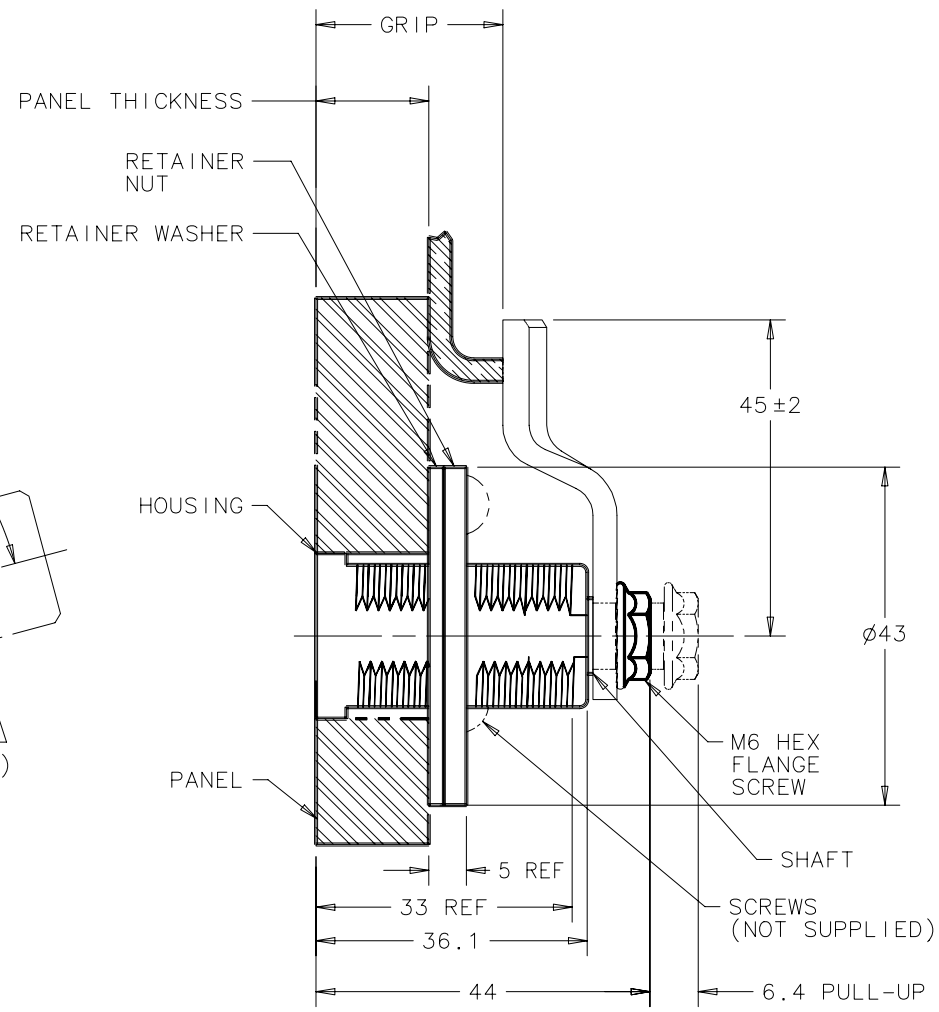
TABLE A		TABLE B				TABLE C		MATERIAL AND FINISH		
VV (HEAD STYLE)	HEAD STYLE	WW (PAWL NUMBER)	GRIP (mm)	WW (PAWL NUMBER)	GRIP (mm)	X (FINISH NUMBER)	FINISH	COMPONENT	MATERIAL	FINISH
3	M4 TRIANGLE	00	19	12	43	1	BRIGHT CHROME PLATE	HOUSING	DIE CAST ZINC	SEE TABLE C
4	7mm SQUARE	01	21	13	45	5	BLACK POLYESTER POWDER	CAP	DIE CAST ZINC	SEE TABLE C
6	8mm HEX SOCKET	02	23	14	47	7	SATIN SILVER POLY. POWDER	RETAINER	302 STAINLESS STEEL	NATURAL
10	8mm SQUARE	03	25	15	49			SPRING	302 STAINLESS STEEL	NATURAL
11	8mm RAILWAY DRIVER	04	27	16	51			O-RING	BUNA-N	NATURAL
18	10mm HEX	05	29	17	53			SLEEVE	1075 STEEL	ZINC IMMERSION COATING
20	8mm TRIANGLE	06	31	18	55			CAM	1075 STEEL	ZINC IMMERSION COATING
		07	33	19	57			SHAFT	LOW CARBON STEEL	ZINC PLATE, TRIVALENT CHROMATE PLUS SEALER
		08	35					PIN	1008 STEEL	ZINC PLATE PLUS CHROMATE DIP, YELLOW
		09	37					RETAINER WASHER	1010 STEEL	ZINC PLATE, TRIVALENT CHROMATE PLUS SEALER
		10	39					RETAINER NUT	1010 STEEL	ZINC PLATE, TRIVALENT CHROMATE PLUS SEALER
		11	41					M6 SCREW	1020 STEEL	ZINC PLATE, TRIVALENT CHROMATE PLUS SEALER
								PAWL	1010 STEEL	ZINC PLATE, TRIVALENT CHROMATE PLUS SEALER

NOTE: DEPENDING ON THE PANEL THICKNESS THERE MAY BE SOME INTERFERENCE BETWEEN RETAINER NUT/SCREWS AND PAWL. ALWAYS CHECK INTERFERENCE. PAWL NUMBERS FOR REF. ONLY. PAWL SHOWN FOR GUIDANCE ONLY.

OPERATION: 195° TURN OF KEY CAUSES PAWL TO ROTATE 75° THEN PULL UP 6.4 MM. RETAINERS, WASHERS, NUTS AND PAWL SHIPPED SEPARATELY, BULK.
 CAUTION: SET PAWL SO THAT NO MORE THAN 6Nm TORQUE IS APPLIED TO CAP TO CLOSE LATCH.



PAWL POSITION IN CLOSED AND OPENED POSITIONS



RECOMMENDED HOLE PATTERN SPACED 120° APART. USE M4 OR No. 8 MOUNTING SCREWS (NOT SUPPLIED)

DOOR PREPARATION