

**ASSEMBLY PART NUMBER**

**E3 - RH - GF**

R = ROTATION  
H = HEAD STYLE  
G = GRIP  
F = FINISH

**R = ROTATION**

5 - TYPE A, CLOCKWISE TO LATCH  
24 - TYPE B, COUNTER-CLOCKWISE TO LATCH

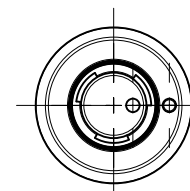
**F = FINISH**

-2 = ELECTROPOLISHED  
-12 = HANDBUFFED, ELECTROPOLISHED.

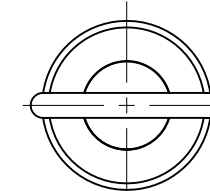
**G = GRIP**

GRIP NO	MINIMUM NO CAM	MAXIMUM NO CAM OR HARDWARE
1	3.2	6.4
2	6.4	9.5
3	9.5	12.7
4	12.7	15.9
5	15.9	19.0
6	19.0	22.2
7	22.2	25.4
8	25.4	28.6

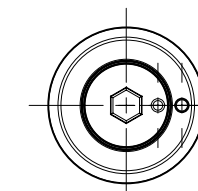
**H = HEAD STYLE**



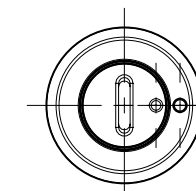
5 - SOUTHCO TUBULAR KEY  
(USE SOUTHCO KEY E3-26-819-15)



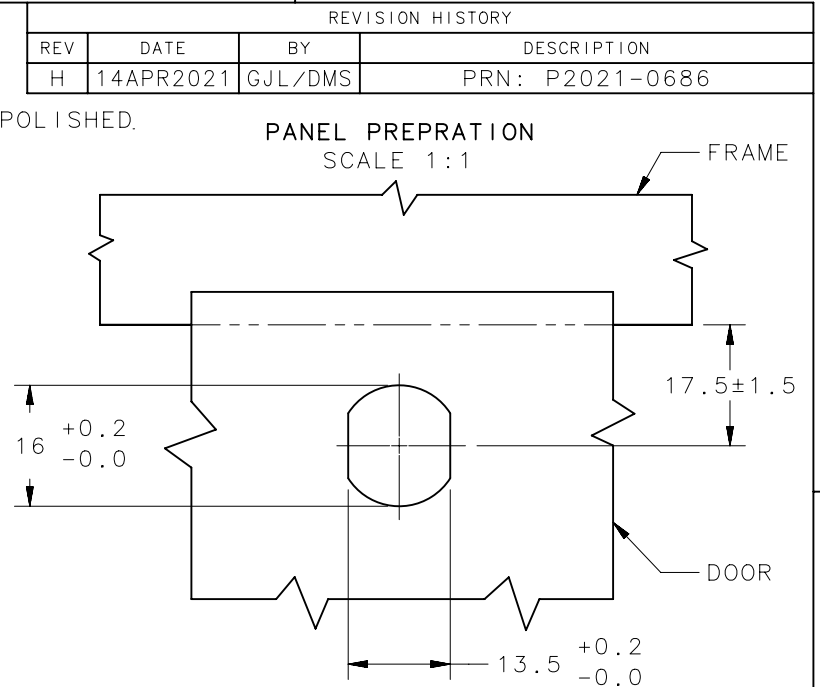
7 - KNOB



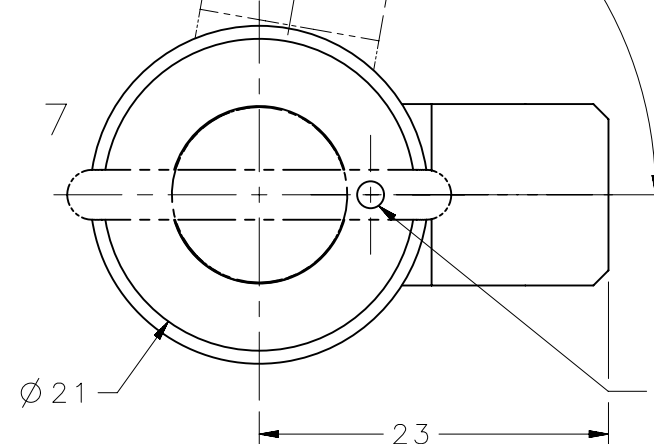
6 - 4 mm HEX RECESS



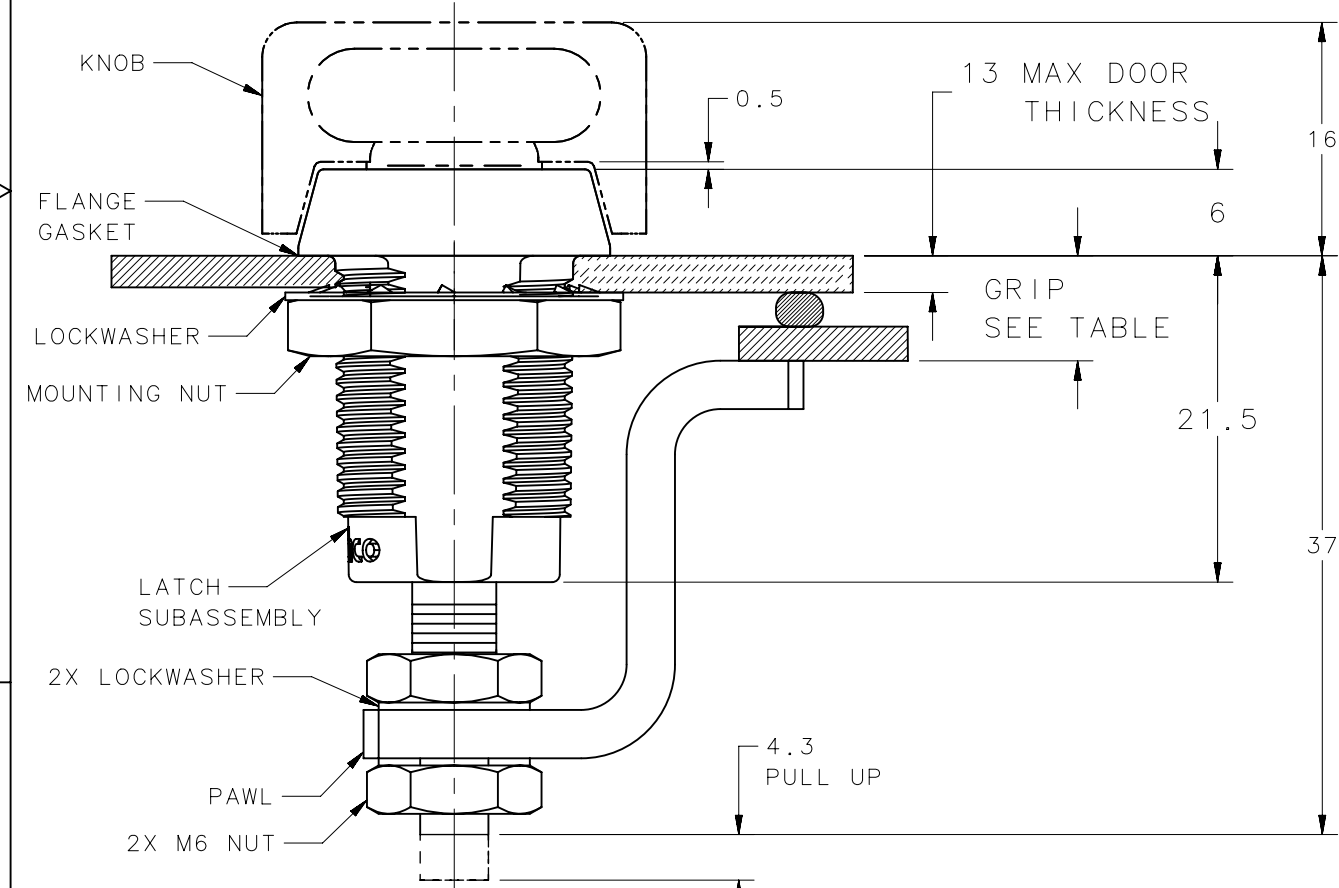
9 - 1.5 mm SLOTTED RECESS



PAWL IN OPEN POSITION  
RIGHT HAND OPERATION SHOWN.



INDICATOR MARKS ON RIM ALIGN WITH KNOB, WHEN PAWL IS IN FULLY LATCHED POSITION.



- NOTES:**
- PAWL, NUTS AND LOCKWASHERS ARE SHIPPED UNASSEMBLED IN BAG WITH LATCH SUB-ASSEMBLY.
  - INSTALLATION:  
SECURE LATCH ASSEMBLY IN DOOR WITH LARGE LOCKWASHER AND MOUNTING NUT (19 ACROSS FLATS) AND TIGHTEN TO 13 N-m MAX. PLACE PAWL, NUTS AND (2X) LOCKWASHERS ON SHAFT AND ADJUST TO REQUIRED GRIP IN LATCHED POSITION. TIGHTEN NUTS 5 N-m MAX USING TWO 10mm WRENCHES.
  - CAUTION: SET PAWL POSITION SO THAT NO MORE THAN 1.6 Nm OF TORQUE IS REQUIRED TO SECURE THE DOOR.
  - OPERATION: 195° TURN OF DRIVER OR KNOB CAUSES PAWL TO ROTATE AND THEN PULL UP AS SHOWN.

NO.	PART NUMBER	QTY	TYPE OF COMPONENT	MATERIAL	FINISH
16	-	1	FLANGE GASKET	NEOPRENE	NATURAL
15	-	1	CAP (TUBULAR KEY)	303 STAINLESS STEEL	PASSIVATED
14	-	1	MOUNTING NUT	STAINLESS STEEL	PASSIVATED
13	-	1	LOCKWASHER	302 STAINLESS STEEL	PASSIVATED
12	-	2	PAWL LOCKWASHER	302 STAINLESS STEEL	PASSIVATED
11	-	2	M6 NUT	304 STAINLESS STEEL	PASSIVATED
10	-	1	PAWL	304 STAINLESS STEEL	PASSIVATED
9	-	1	PIN	STEEL-ZINC PLATE	CHROMATE PLUS SEALER, PASSIVATED
8	-	1	O-RING	BUNA N	-
7	-	1	RETAINER	302 STAINLESS STEEL	PASSIVATED
6	-	1	SLEEVE	1065 CASE HARDENED STEEL	DECROTIZED™
5	-	1	SPRING	302 STAINLESS STEEL	PASSIVATED
4	-	1	SHAFT	316 STAINLESS STEEL	-
3	-	1	CAP	316L STAINLESS STEEL	ELECTROPOLISHED
2	-	1	CAM	1075 CASE HARDENED STEEL	DECROTIZED™
1	-	1	HOUSING	316L STAINLESS STEEL	ELECTROPOLISHED
-	E3-5X-XZ	-	E3 VISE ACTION LATCH ASSEMBLY	-	-

THIRD ANGLE PROJECTION			
INCHES [MM]			
TOLERANCES UNLESS OTHERWISE NOTED		DESCRIPTION	
ALL DIMENSIONS WITHOUT TOLERANCES ARE FOR REFERENCE ONLY.		E3 SMALL SIZE VISE ACTION™ LATCHES, STAINLESS STEEL	
PER ASME Y14.5M-1994		SIZE	DWG NO.
DRAWN BY		B	NX
DATE		13JUL2004	J-E3-55
SCALE		2:1	SHEET 1 OF 1