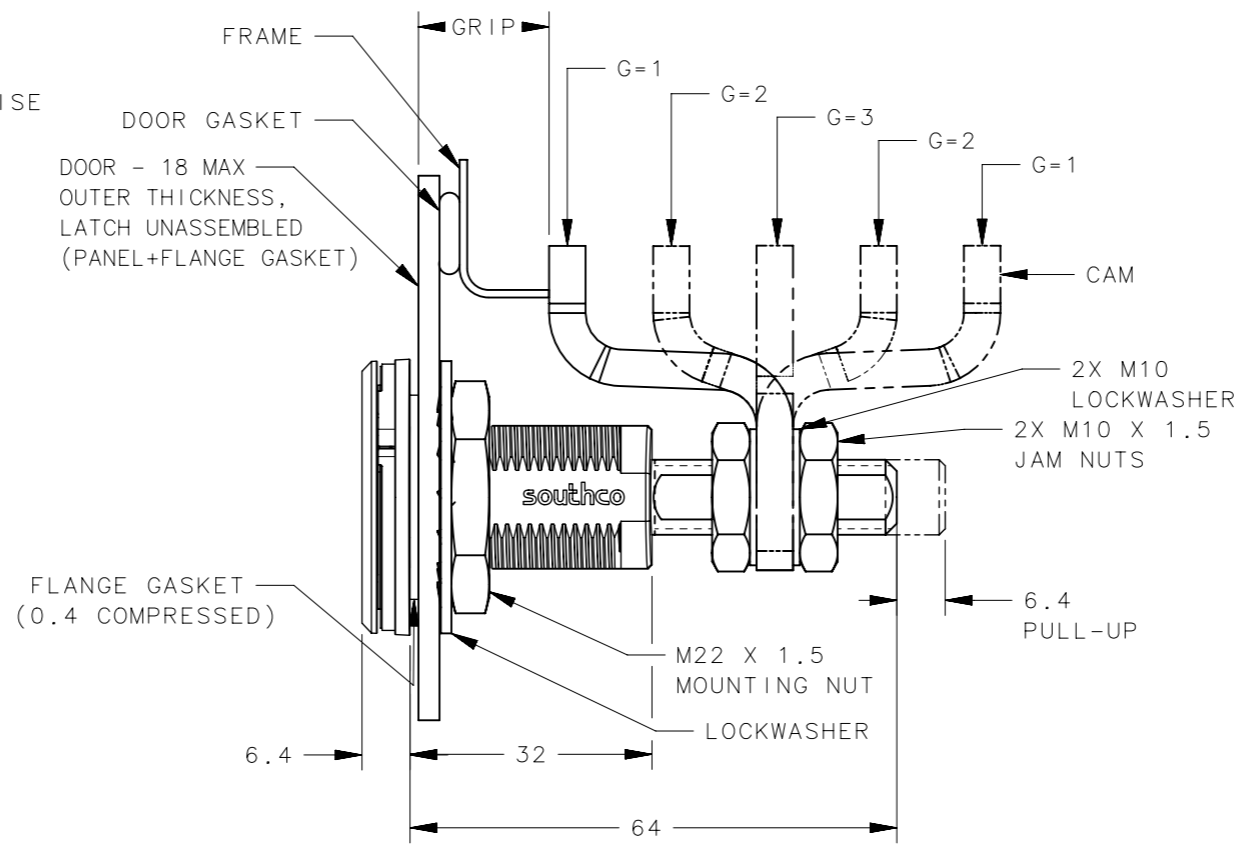
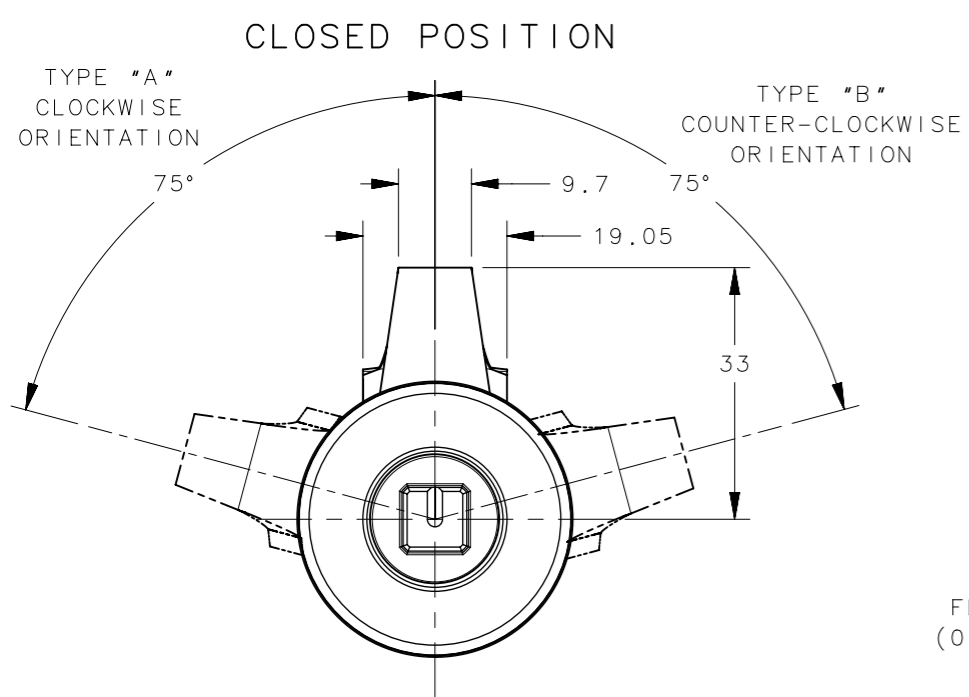
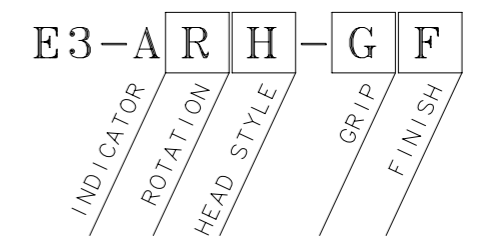


REVISION HISTORY			
REV	DATE	BY	DESCRIPTION
E	10MAY2024	PSP/SAK	PRN: P2024-0818

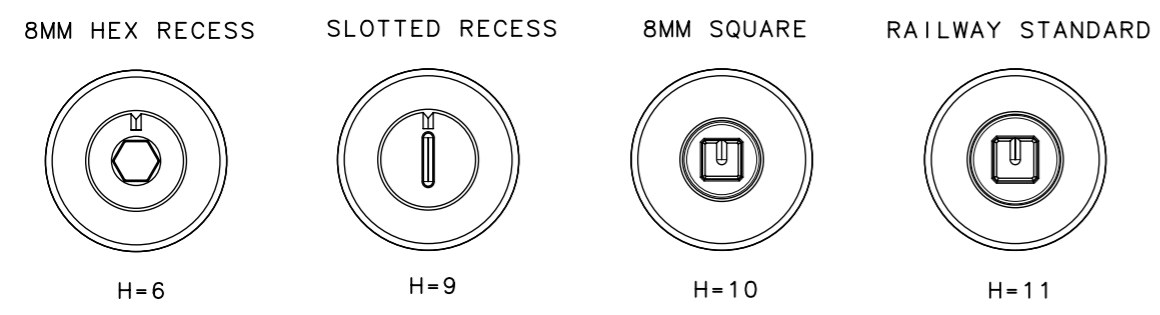


STANDARD PART NUMBER



- R = ACTUATION STYLE**
- 1 = TYPE A CLOCKWISE TO LATCH LATCH UNASSEMBLED
 - 22 = TYPE B COUNTER-CLOCKWISE TO LATCH LATCH UNASSEMBLED
- G = GRIP**
- 0 = CAM ORDERED SEPARATELY
- F = FINISH**
- 2 = MIM ELECTROPOLISHED

H = HEAD STYLE
SCALE 2:3



GRIP STYLE	DEEP OFFSET CAM	OFFSET CAM	STRAIGHT CAM
CAM - ORDER SEPARATELY	E3-28-201-24	E3-28-202-24	E3-28-203-24
CAM ORIENTATION - FORWARD	11.4 - 27.2	25.4 - 41.1	38.9 - 54.6
CAM ORIENTATION - REVERSE	66.3 - 76.2	52.6 - 68.3	
MAX OUTER DOOR THICKNESS	18	18	18

H - HEAD STYLE	KEY PART NUMBER
8MM HEX RECESS	NOT SUPPLIED BY SOUTHCO
SLOTTED RECESS	NOT SUPPLIED BY SOUTHCO
8MM SQUARE	E3-8-1
RAILWAY STANDARD	E3-14-1

- NOTES**
- OPERATION: 195° TURN OF DRIVER CAUSES CAM TO ROTATE AND PULL UP AS SHOWN. SEE SHEET 2 FOR DETAILED WING INDICATOR OPERATION DESCRIPTION.
 - DETERMINE TOTAL GRIP BY ADDING:
MAX. OUTER DOOR THICKNESS (INCLUDE ALL ACCESSORIES)
PLUS COMPRESSED FRAME GASKET AND FRAME THICKNESS.
 - INSTALLATION:
A. INSERT LATCH INTO HOLE IN DOOR. CHECK FOR PROPER ORIENTATION AND OPERATION USING CAM.
B. INSTALL USING LOCKWASHER AND MOUNTING NUT (M22). RECOMMENDED TORQUE 20 Nm.
C. INSTALL JAM NUT, LOCKWASHER, CAM, LOCKWASHER AND JAM NUT ON SHAFT. ADJUST JAM NUTS TO POSITION CAM AT CORRECT GRIP (WITH LATCH CLOSED). TIGHTEN JAM NUTS (20 Nm MAX TORQUE) USING TWO 17mm WRENCHES.
 - CAUTION: ADJUST CAM SO NO MORE THAN 7.9Nm TORQUE IS REQUIRED TO CLOSE LATCH.
 - FOR ADDITIONAL CONFIGURATIONS SEE J-E3-A12-18-1.

FOR PANEL PREPRATION SEE SHEET#2.

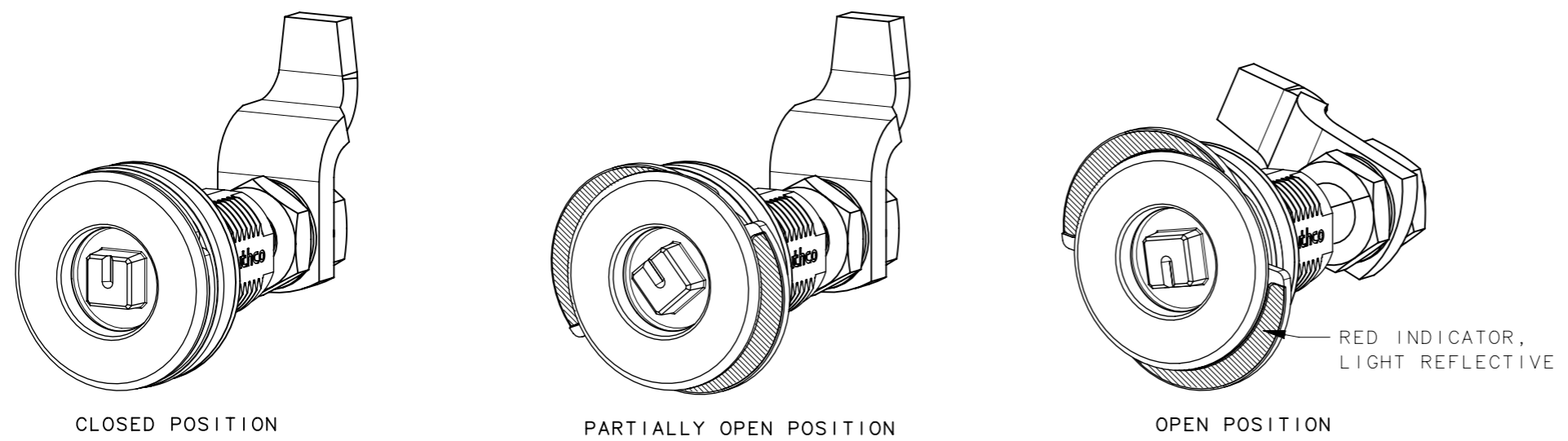
COMPONENT	MATERIAL	FINISH
HOUSING	STAINLESS STEEL	ELECTROPOLISHED
CAP	STAINLESS STEEL	ELECTROPOLISHED
INDICATOR ASSEMBLY	-	-
O-RING, ANTI VIBRATION	NITRILE RUBBER	BLACK
O-RING	NITRILE RUBBER	BLACK
RETAINER RING	STAINLESS STEEL	NATURAL
SPRING	STAINLESS STEEL	NATURAL
SLEEVE	STAINLESS STEEL	PASSIVATED
CAM	STEEL	GEOMET PLUS SEALER
SHAFT	STAINLESS STEEL	PASSIVATED
PIN	STEEL	ZINC PLATE
WASHER	STAINLESS STEEL	PASSIVATED
M10 HEX NUT	STAINLESS STEEL	PASSIVATED
M22 HEX NUT	STAINLESS STEEL	NATURAL
M22 LOCKWASHER	STAINLESS STEEL	PASSIVATED
DOOR CAM	STAINLESS STEEL	PASSIVATED
GASKET	NEOPRENE	BLACK

CPB NUMBER 2017-0409	THIRD ANGLE PROJECTION	 CONNECT • CREATE • INNOVATE
SURFACE AREA	MILLIMETERS [IN]	
VOLUME	TOLERANCES UNLESS OTHERWISE NOTED	DESCRIPTION E3 WITH INDICATOR, MIM, ADJUSTABLE GRIP
PROPRIETARY ITEM <small>EXCEPT FOR USES EXPRESSLY GRANTED IN WRITING, INFORMATION DISCLOSED HEREON IS CONFIDENTIAL AND ALL RIGHTS, PATENT AND OTHERWISE, ARE RESERVED BY SOUTHCO, INC.</small>	ALL DIMENSIONS WITHOUT TOLERANCES ARE FOR REFERENCE ONLY.	SIZE A3 SYSTEM NX DWG NO. J-E3-A12-18
	PER ASME Y14.5M-2009	DRAWN BY DKM/DMS DATE 04MAR2019 SCALE 1:1 SHEET 1 OF 2

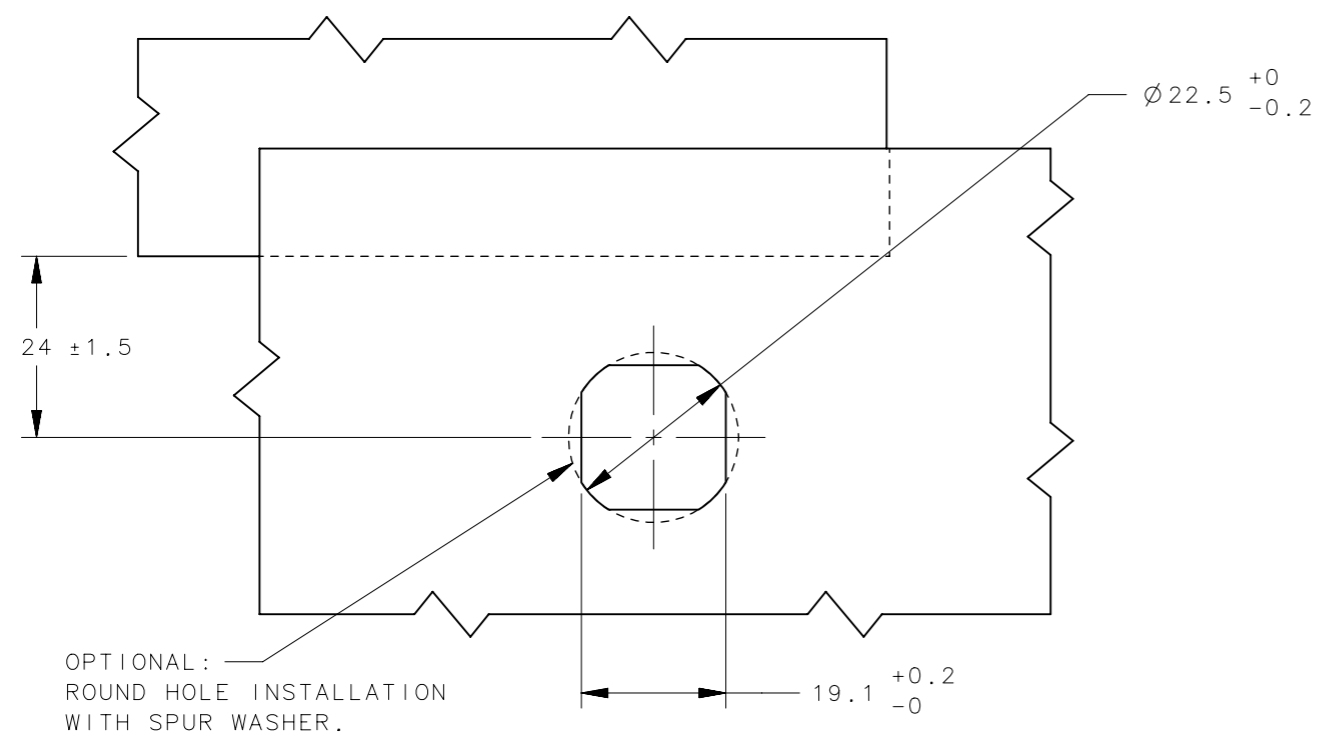
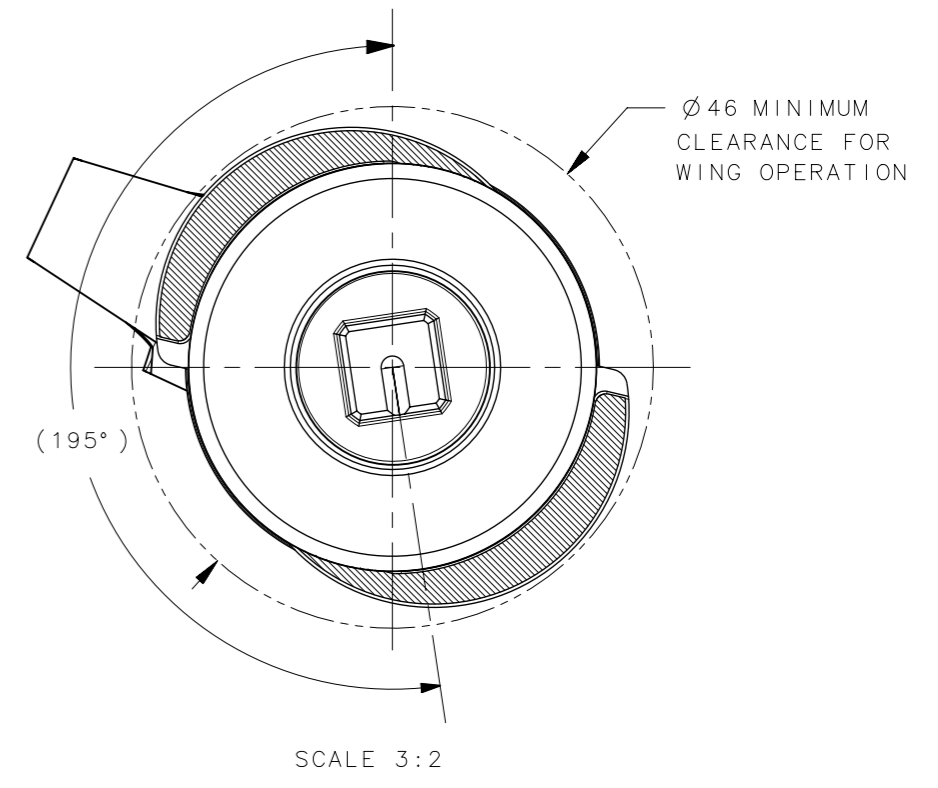
REVISION HISTORY			
REV	DATE	BY	DESCRIPTION
E	10MAY2024	PSP/SAK	PRN: P2024-0818

VISUAL INDICATOR OPERATION

TYPE "A" VERSION SHOWN



INDICATOR WING MOTION
 -REFERENCE ONLY-
 0° (LATCHED POSITION) TO 30° - INDICATORS FULLY RETRACTED.
 20° - 50° (PARTIALLY OPEN POSITION) - INDICATORS MOVE FROM FULLY RETRACTED TO FULLY OPEN.
 40° TO 195° (OPEN POSITION) - INDICATORS FULLY EXTENDED.



OPTIONAL: ROUND HOLE INSTALLATION WITH SPUR WASHER.

PANEL PREPRATION

CPB NUMBER 2017-0409	THIRD ANGLE PROJECTION		 CONNECT • CREATE • INNOVATE	
SURFACE AREA	MILLIMETERS [IN]			
VOLUME	TOLERANCES UNLESS OTHERWISE NOTED		DESCRIPTION E3 WITH INDICATOR, MIM, ADJUSTABLE GRIP	
PROPRIETARY ITEM	ALL DIMENSIONS WITHOUT TOLERANCES ARE FOR REFERENCE ONLY.		SIZE A3	SYSTEM NX
EXCEPT FOR USES EXPRESSLY GRANTED IN WRITING, INFORMATION DISCLOSED HEREON IS CONFIDENTIAL AND ALL RIGHTS, PATENT AND OTHERWISE, ARE RESERVED BY SOUTHCO, INC.	PER ASME Y14.5M-2009	DRAWN BY DKM/DMS	DATE 04MAR2019	DWG NO. J-E3-A12-18
		SCALE NTS	SHEET 2 OF 2	