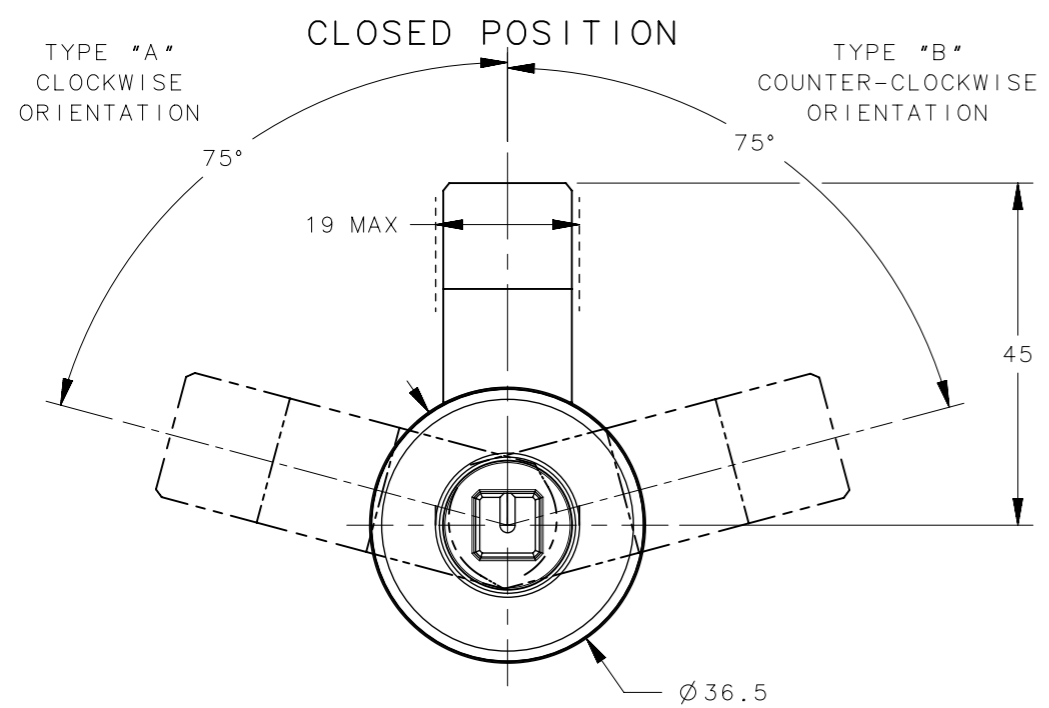
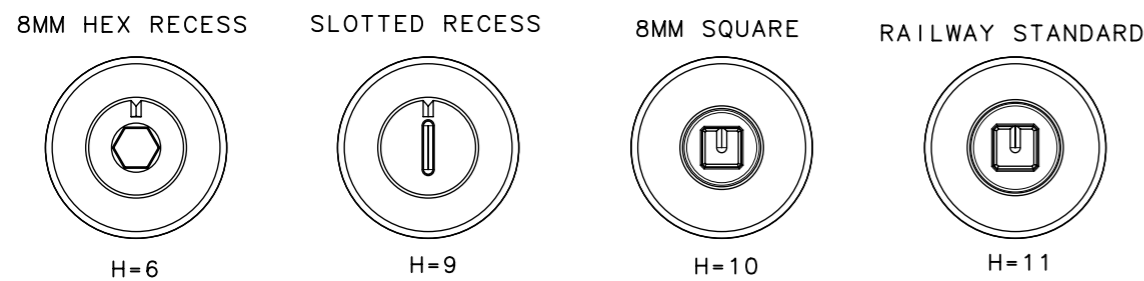


REVISION HISTORY			
REV	DATE	BY	DESCRIPTION
F	05JUN2024	PSP/SAK	PRN: P2024-0971

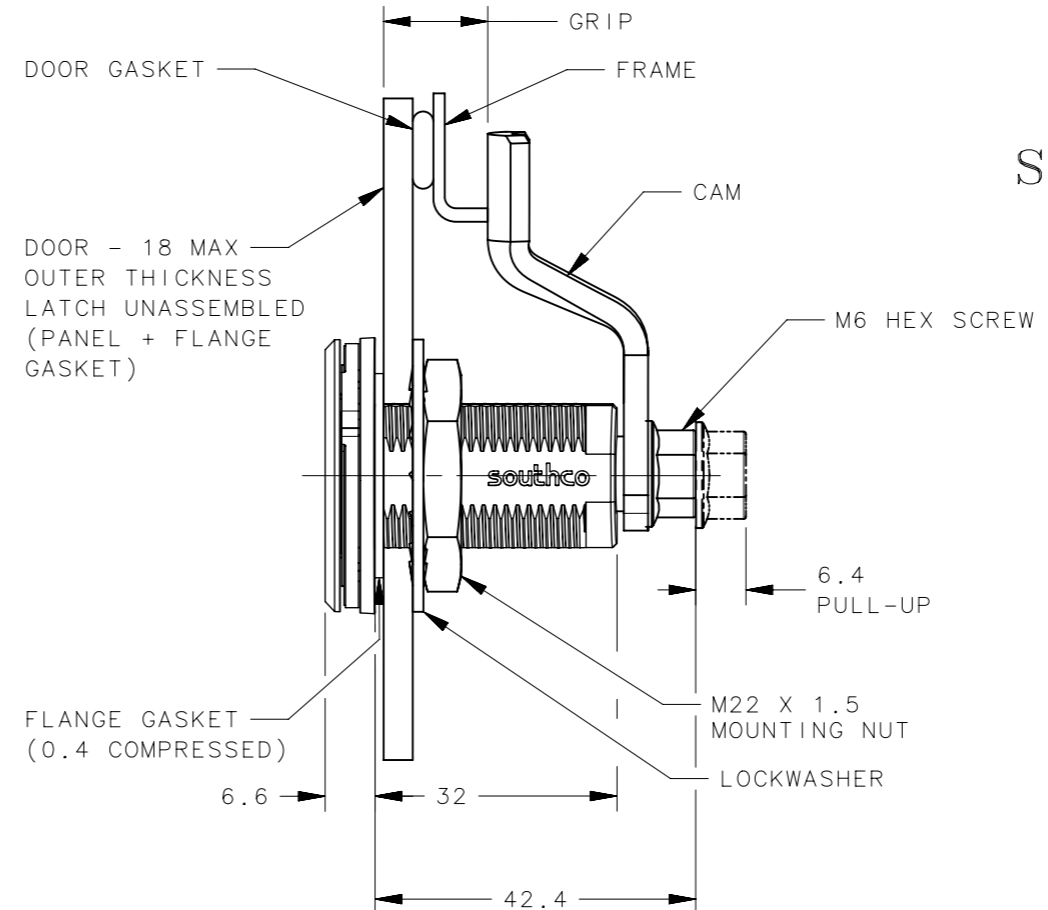


H = HEAD STYLE
SCALE 2:3

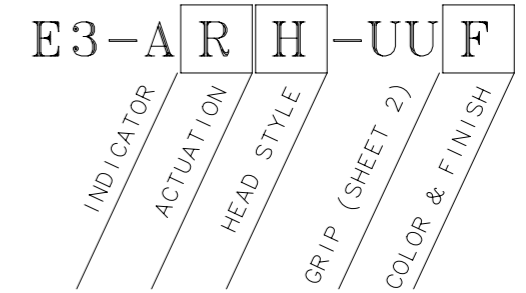


H - HEAD STYLE	KEY PART NUMBER
8MM HEX RECESS	NOT SUPPLIED BY SOUTHCO
SLOTTED RECESS	NOT SUPPLIED BY SOUTHCO
8MM SQUARE	E3-8-1
RAILWAY STANDARD	E3-14-1

- NOTES**
- OPERATION: 195° TURN OF DRIVER CAUSES CAM TO ROTATE AND PULL UP AS SHOWN. SEE SHEET 2 FOR DETAILED WING INDICATOR OPERATION DESCRIPTION.
 - DETERMINE TOTAL GRIP BY ADDING: MAX. OUTER DOOR THICKNESS (INCLUDE ALL ACCESSORIES) PLUS COMPRESSED FRAME GASKET AND FRAME THICKNESS.
 - FIND YOUR TOTAL GRIP IN CAM TABLE AND DETERMINE IF AN ASSEMBLED OR UNASSEMBLED LATCH IS TO BE USED BASED ON OUTER DOOR THICKNESS.
 - INSTALLATION:
 - INSERT LATCH INTO HOLE IN DOOR, IN THE UNLATCHED POSITION. CHECK FOR PROPER ORIENTATION AND OPERATION OF CAM.
 - RECOMMENDED MOUNTING NUT (M22) TORQUE 20Nm
RECOMMENDED CAM MOUNTING SCREW TORQUE 10Nm.
 - FOR ADDITIONAL CONFIGURATIONS SEE J-E3-A12-19-1.



STANDARD PART NUMBER



R = ACTUATION STYLE

- 10 = TYPE A CLOCKWISE TO LATCH - LATCH ASSEMBLED
- 12 = TYPE A CLOCKWISE TO LATCH - LATCH UNASSEMBLED
- 27 = TYPE B COUNTER-CLOCKWISE TO LATCH - LATCH ASSEMBLED
- 29 = TYPE B COUNTER-CLOCKWISE TO LATCH - LATCH UNASSEMBLED

UU = GRIP

CAM ORDERED SEPARATELY, FOR CAM PART NUMBERS AND RESULTING GRIP DISTANCE SEE SHEET 2

F = FINISH

- 2 = MIM-ELECTROPOLISHED

FOR GRIP AND PANEL PREPARATION SEE SHEET#2.

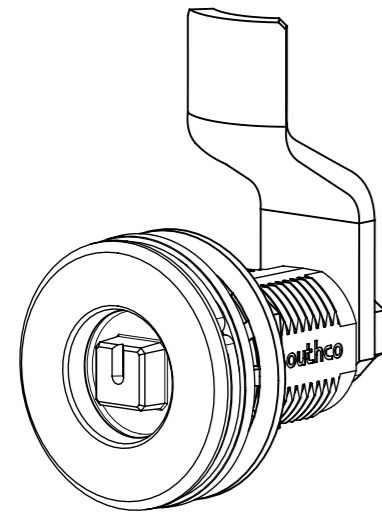
COMPONENT	MATERIAL	FINISH
HOUSING	STAINLESS STEEL	ELECTROPOLISHED
CAP	STAINLESS STEEL	ELECTROPOLISHED
INDICATOR ASSEMBLY	-	-
O-RING, ANTI VIBRATION	NITRILE RUBBER	BLACK
O-RING	NITRILE RUBBER	BLACK
RETAINER RING	STAINLESS STEEL	NATURAL
SPRING	STAINLESS STEEL	NATURAL
SLEEVE	STAINLESS STEEL	PASSIVATED
CAM	STEEL	GEOMET PLUS SEALER
SHAFT	STAINLESS STEEL	PASSIVATED
PIN	STEEL	ZINC PLATE
WASHER	STAINLESS STEEL	PASSIVATED
M6 HEX SCREW	STAINLESS STEEL	PASSIVATED
M22 HEX NUT	STAINLESS STEEL	NATURAL
M22 LOCKWASHER	STAINLESS STEEL	PASSIVATED
DOOR CAM	STAINLESS STEEL	PASSIVATED
GASKET	NEOPRENE	BLACK

CPB NUMBER 2017-0409	THIRD ANGLE PROJECTION	
SURFACE AREA	MILLIMETERS [IN]	
VOLUME	TOLERANCES UNLESS OTHERWISE NOTED	DESCRIPTION E3 WITH INDICATOR, MIM FIXED GRIP
PROPRIETARY ITEM	ALL DIMENSIONS WITHOUT TOLERANCES ARE FOR REFERENCE ONLY.	SIZE A3
EXCEPT FOR USES EXPRESSLY GRANTED IN WRITING, INFORMATION DISCLOSED HEREON IS CONFIDENTIAL AND ALL RIGHTS, PATENT AND OTHERWISE, ARE RESERVED BY SOUTHCO, INC.	PER ASME Y14.5M-2009	SYSTEM NX
		DWG NO. J-E3-A12-19
		DRAWN BY DKM/DMS
		DATE 11MAR2019
		SCALE DNS
		SHEET 1 OF 2

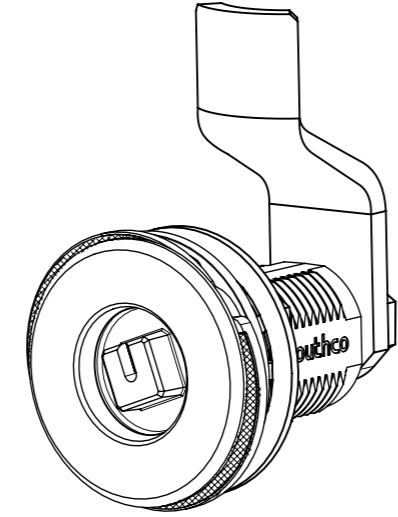
REVISION HISTORY			
REV	DATE	BY	DESCRIPTION
F	05JUN2024	PSP/SAK	PRN: P2024-0971

VISUAL INDICATOR OPERATION

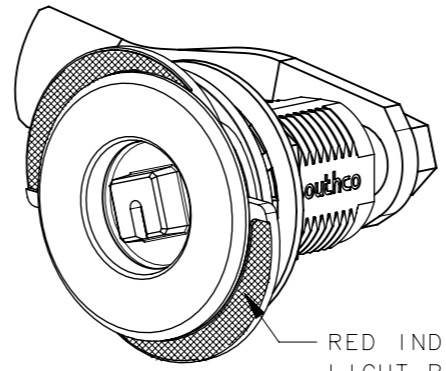
TYPE "A" VERSION SHOWN



CLOSED POSITION

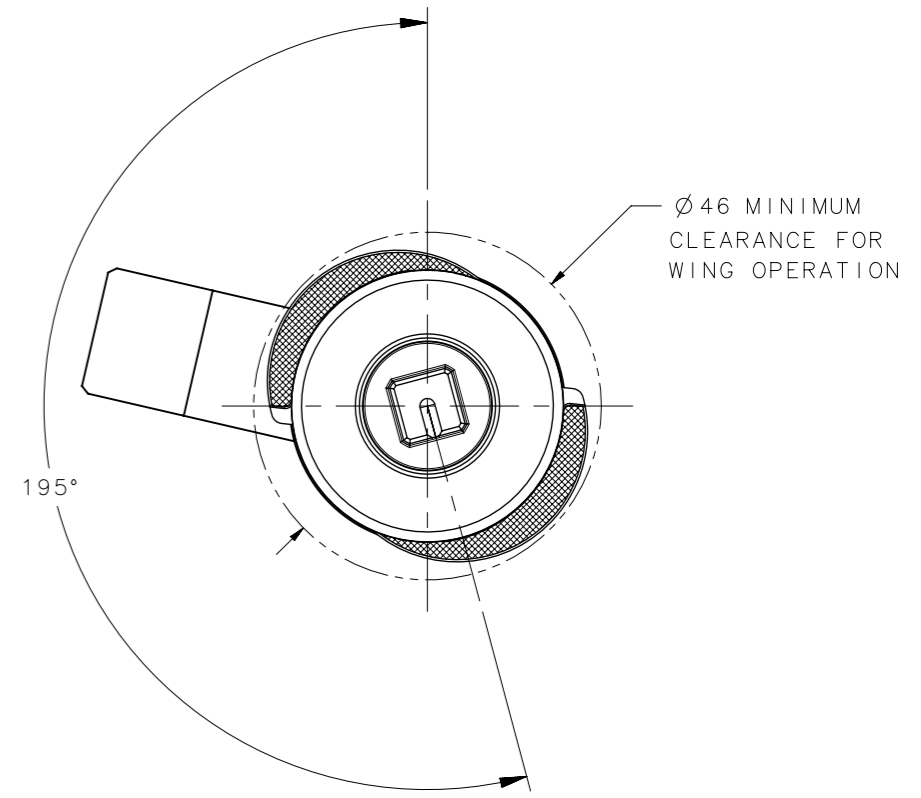


PARTIALLY OPEN POSITION



OPEN POSITION

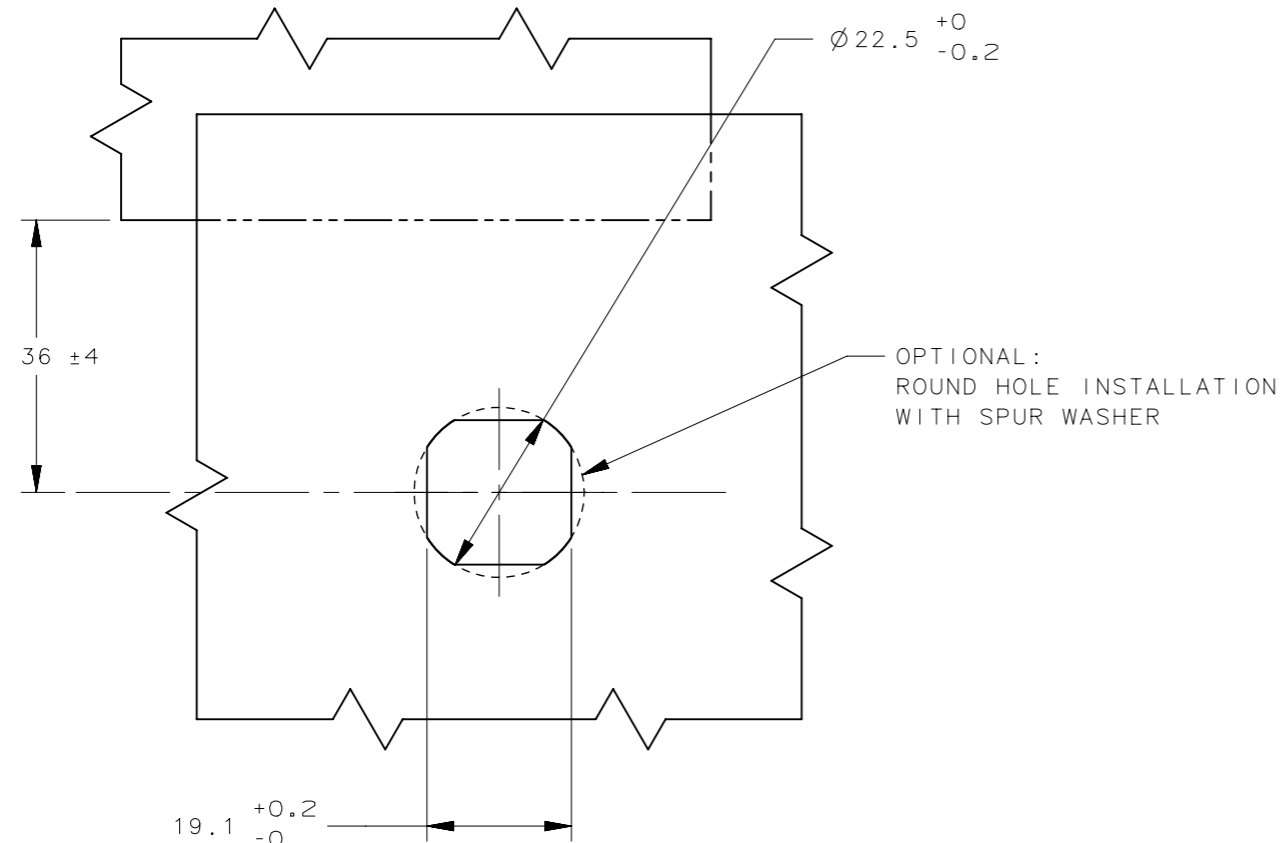
RED INDICATOR,
LIGHT REFLECTIVE



INDICATOR WING MOTION
-REFERENCE ONLY-

0° (LATCHED POSITION) TO 30° - INDICATORS FULLY RETRACTED.
20° - 50° (PARTIALLY OPEN POSITION) - INDICATORS MOVE FROM FULLY RETRACTED TO FULLY OPEN.
40° TO 195° (OPEN POSITION) - INDICATORS FULLY EXTENDED.

CAM PART NUMBER (ORDERED SEPARATELY)	
TOTAL GRIP (mm)	CAM PART NUMBER
15	E3-28-700-24
17	E3-28-701-24
19	E3-28-702-24
21	E3-28-703-24
23	E3-28-704-24
25	E3-28-705-24
27	E3-28-706-24
29	E3-28-707-24
31	E3-28-708-24
33	E3-28-709-24
35	E3-28-710-24
37	E3-28-711-24
39	E3-28-712-24
41	E3-28-713-24
43	E3-28-714-24
45	E3-28-715-24
47	E3-28-716-24
49	E3-28-717-24
51	E3-28-718-24
53	E3-28-719-24



19.1 ^{+0.2}/₋₀

PANEL PREPARATION

CPB NUMBER 2017-0409	THIRD ANGLE PROJECTION	
SURFACE AREA	MILLIMETERS [IN]	
VOLUME	TOLERANCES UNLESS OTHERWISE NOTED	DESCRIPTION E3 WITH INDICATOR, MIM FIXED GRIP
PROPRIETARY ITEM EXCEPT FOR USES EXPRESSLY GRANTED IN WRITING, INFORMATION DISCLOSED HEREON IS CONFIDENTIAL AND ALL RIGHTS, PATENT AND OTHERWISE, ARE RESERVED BY SOUTHCO, INC.	ALL DIMENSIONS WITHOUT TOLERANCES ARE FOR REFERENCE ONLY.	SIZE A3
PER ASME Y14.5M-2009	SYSTEM NX	DWG NO. J-E3-A12-19
	DRAWN BY DKM/DMS	DATE 11MAR2019
		SCALE DNS
		SHEET 2 OF 2