

REVISION HISTORY			
REV	DATE	BY	DESCRIPTION
G	15NOV2021	SSW/MBT	PRN: P2021-2226

ASSEMBLY PART NUMBER

E3-CRH-UUF

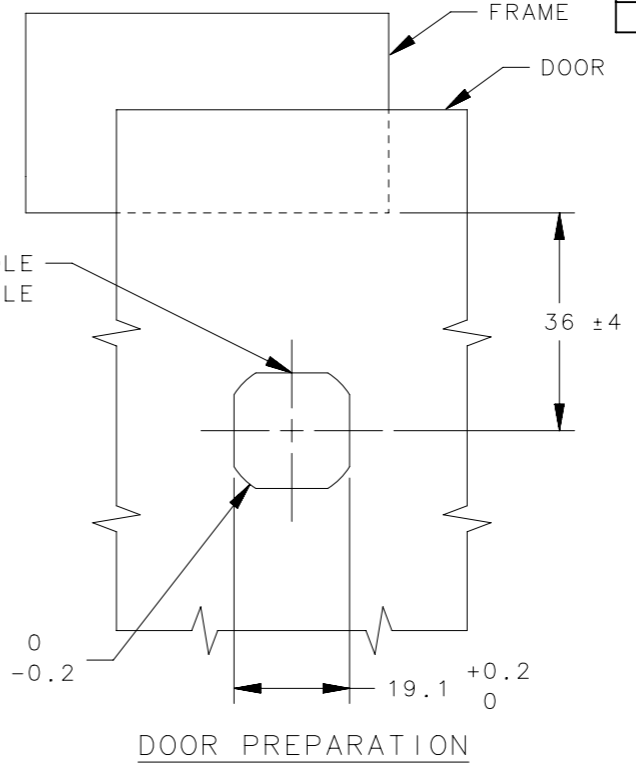
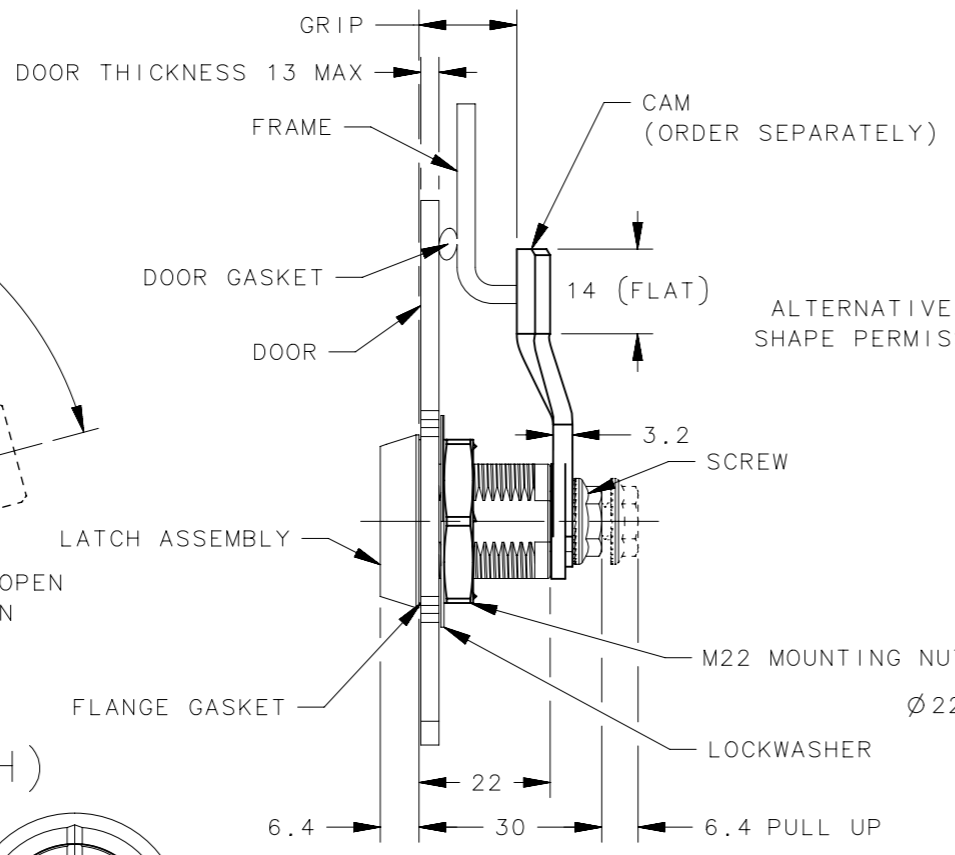
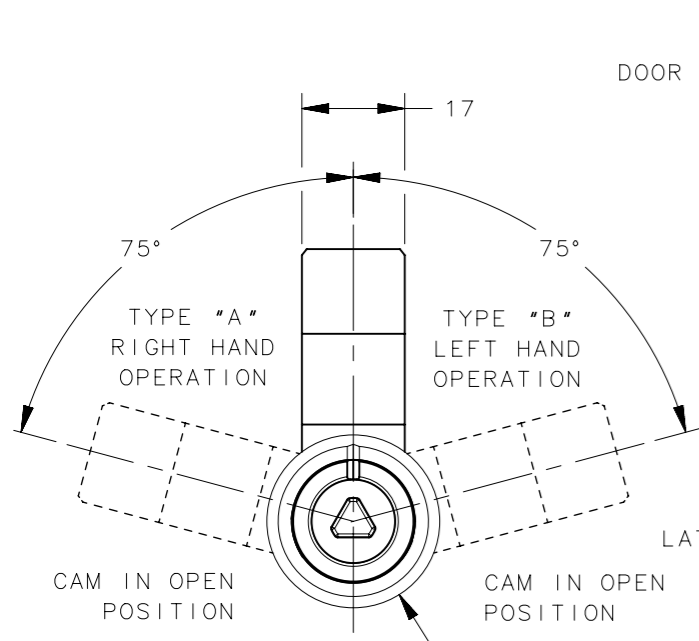


R=ROTATION STYLE:
 12=TYPE A, TURN CLOCKWISE TO LATCH
 29=TYPE B, TURN COUNTERCLOCKWISE TO LATCH

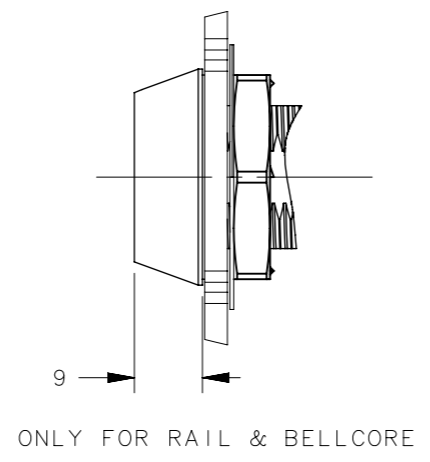
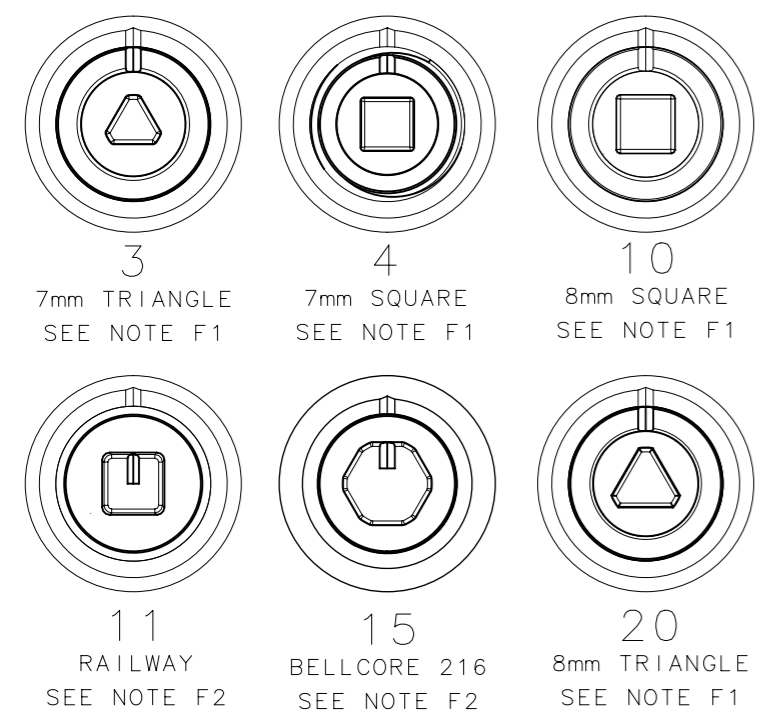
F=FINISH:
 1=BRIGHT CHROMATE PLATE
 5=BLACK POWDER COATING
 7=SILVER POWDER COATING

TOTAL GRIP	CAM PART NUMBER	TOTAL GRIP	CAM PART NUMBER
4	E5-2500	24	E5-2510
6	E5-2501	26	E5-2511
8	E5-2502	28	E5-2512
10	E5-2503	30	E5-2513
12	E5-2504	32	E5-2514
14	E5-2505	34	E5-2515
16	E5-2506	36	E5-2516
18	E5-2507	38	E5-2517
20	E5-2508	40	E5-2518
22	E5-2509	42	E5-2519

HEAD STYLE	KEY PART NUMBER
7mm TRIANGLE	E3-3-1
7mm SQUARE	E3-4-1
8mm TRIANGLE	E3-7-1
8mm SQUARE	E3-8-1
BELLCORE 216	E3-12-1
RAILWAY	E3-14-1



HEAD STYLE (H)



13	-	SCREW	LOW CARBON STEEL	ZINC PLATE BRIGHT CHROMATE
12	-	FLANGE GASKET	NEOPRENE	NATURAL
11	-	LOCK WASHER	SPRING STEEL	ZINC PLATE CHROMATE, PLUS SEALER
10	-	MOUNTING NUT	DIE CASTING ZINC	ACRYLIC LATEX SEALER
9	-	PIN	1008 STEEL	ZINC PLATE PLUS YELLOW CHROMATE
8	-	O-RING	BUNA-N	NATURAL
7	-	RETAINER	302 SS	NATURAL
6	-	SPRING	MUSIC WIRE	ZINC PLATE PLUS BRIGHT CHROMATE
5	-	SHAFT	LOW CARBON STEEL	ZINC PLATE CHROMATE, PLUS SEALER
4	-	SLEEVE	1075 STEEL	ZINC IMMERSION COATING
3	-	CAM	1075 STEEL	ZINC IMMERSION COATING
2	-	CAP	DIE CASTING ZINC	SEE FINISH TABLE
1	-	HOUSING	DIE CASTING ZINC	SEE FINISH TABLE
-	E3-CRH-UUF	ASSEMBLY	-	-
No.	PART NUMBER	TYPE OF COMPONENT	MATERIAL	FINISH

- NOTES:
- OPERATION: 195° TURN OF DRIVER CAUSES CAM TO ROTATE THEN PULL UP AS SHOWN.
 - DETERMINE TOTAL GRIP BY ADDING MAX OUTER DOOR THICKNESS (INCLUDE ALL ACCESSORIES) PLUS COMPRESSED GASKETS AND FRAME THICKNESS.
 - INSTALLATION:
 - INSERT LATCH INTO THE HOLE OF THE DOOR IN THE UNLATCHED POSITION. CHECK FOR PROPER ORIENTATION AND OPERATION OF CAM.
 - INSTALL LOCKWASHER AND MOUNTING NUT ONTO HOUSING. RECOMMENDED TIGHTENING TORQUE FOR MOUNTING NUT IS 20 Nm.
 - INSTALL CAM AND CAM MOUNTING SCREW. RECOMMENDED TORQUE IS 10 Nm.
 - CHOOSE CAM ACCORDING TO GRIP RANGE FROM THE CAM TABLE.
 - FOR ALTERNATIVE LATCH PACKAGING WITH CAM, SEE DRAWING J-E3-C-12-1A.
 - LATCH HEADSTYLE FITTING WITH KEY:
 - KEY OD ϕ 13.3 MAX
 - KEY OD ϕ 18 MAX

THIRD ANGLE PROJECTION

MILLIMETERS [IN]

TOLERANCES UNLESS OTHERWISE NOTED

ALL DIMENSIONS WITHOUT TOLERANCES ARE FOR REFERENCE ONLY.

PER ASME Y14.5M-1994

CONNECT • CREATE • INNOVATE

ZINC COMPACT E3 LATCH

WISE ACTION SERIES FIXED GRIP

SIZE A3 SYSTEM NX DWG NO. J-E3-C-12-1

DATE 30JUL2015 SCALE 1:1 SHEET 1 OF 1

PROPRIETARY ITEM

EXCEPT FOR USES EXPRESSLY GRANTED IN WRITING, INFORMATION DISCLOSED HEREON IS CONFIDENTIAL AND ALL RIGHTS, PATENT AND OTHERWISE, ARE RESERVED BY SOUTHCO, INC.