

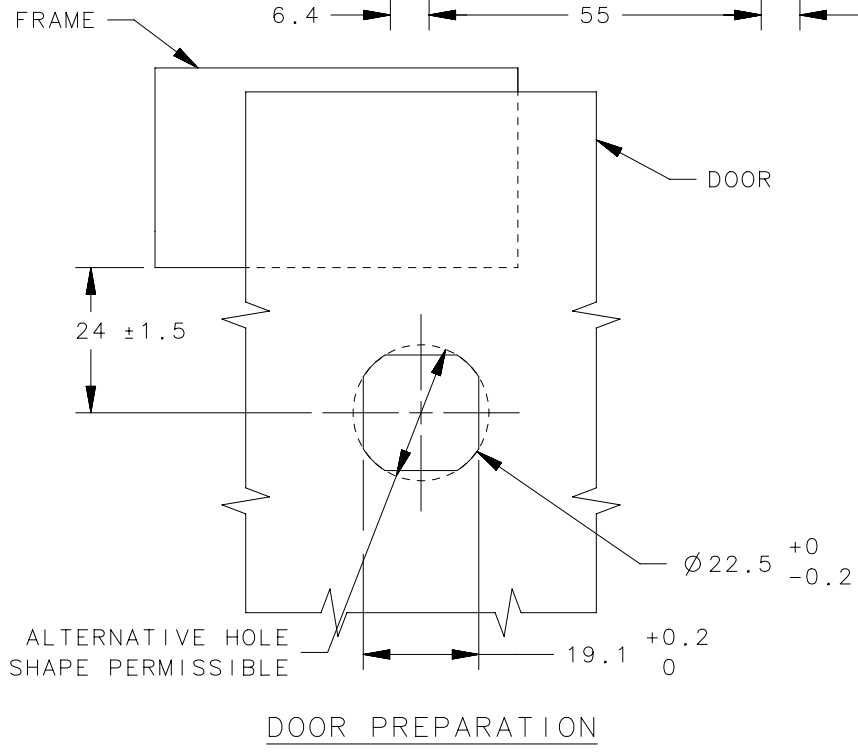
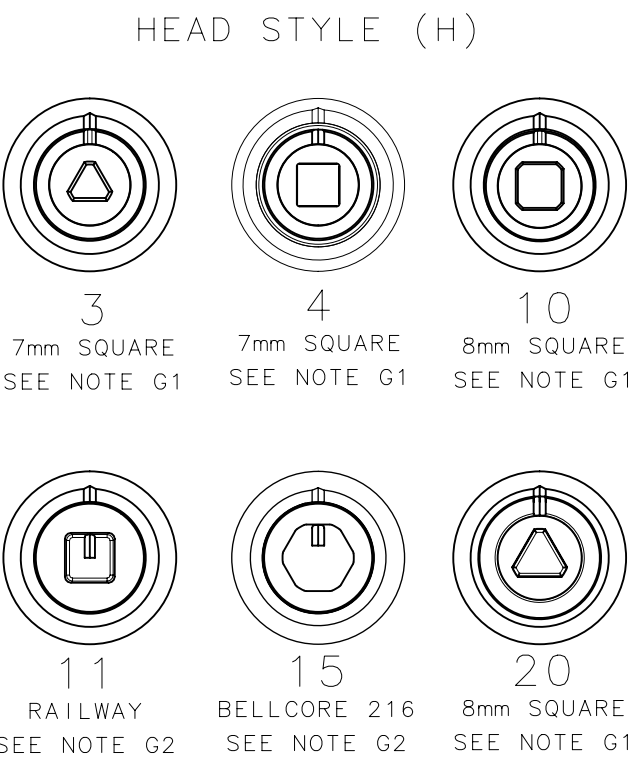
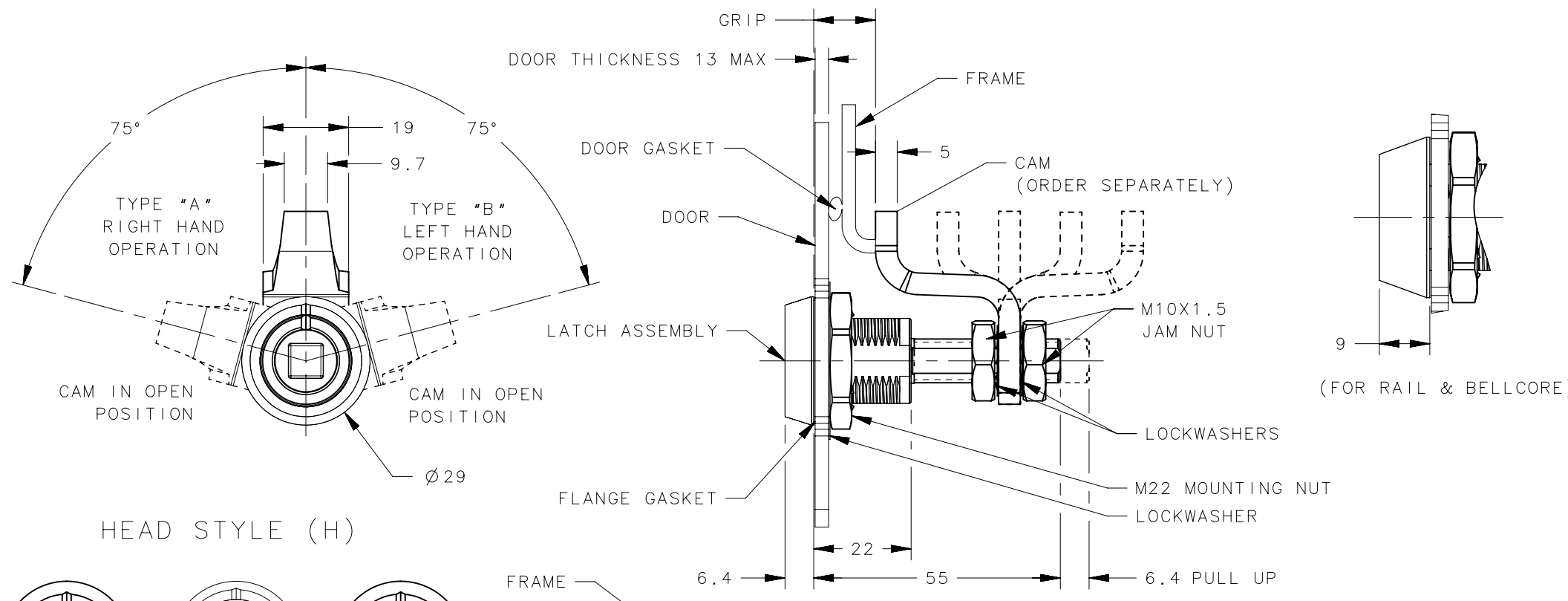
REVISION HISTORY			
REV	DATE	BY	DESCRIPTION
1	15NOV2021	SSW/MBT	PRN: P2021-2226

ASSEMBLY PART NUMBER  
**E3-CRH-OF**

FINISH  
 CAM TYPE  
 SEE CAM TABLE  
 HEAD STYLE  
 ROTATION STYLE

R=ROTATION STYLE:  
 1=TYPE A TURN CLOCKWISE TO LATCH  
 22=TYPE B TURN COUNTERCLOCKWISE TO LATCH

F=FINISH:  
 1=BRIGHT CHROMATE PLATE  
 5=BLACK POWDER COATING  
 7=SILVER POWDER COATING



KEY TABLE (ORDER SEPARATELY FROM LATCH)	
HEAD STYLE	KEY PART NUMBER
7mm TRIANGLE	E3-3-1
7mm SQUARE	E3-4-1
8mm TRIANGLE	E3-7-1
8mm SQUARE	E3-8-1
BELLCORE 216	E3-12-1
RAILWAY	E3-14-1

CAM PART NUMBER TABLE (ORDER SEPARATELY FROM LATCH)			
PART NUMBER	MINIMUM GRIP	MAXIMUM GRIP	CAM TYPE
E3-28-201-12	3.3	14.7	DEEP OFFSET CAM, FORWARD
	56.6	66.6	DEEP OFFSET CAM, REVERSED
E3-28-202-12	14.6	30.3	OFFSET CAM, FORWARD
	42	57.7	OFFSET CAM, REVERSED
E3-28-203-12	28.8	44.5	STRAIGHT CAM

14	-	LOCKWASHER	SPRING STEEL	ZINC PLATE CHROMATE, PLUS SEALER
13	-	M10X1.5 NUT	LOW CARBON STEEL	ZINC PLATE CHROMATE, PLUS SEALER
12	-	FLANGE GASKET	NEOPRENE	NATURAL
11	-	LOCK WASHER	SPRING STEEL	ZINC PLATE CHROMATE, PLUS SEALER
10	-	MOUNTING NUT	DIE CASTING ZINC	ACRYLIC LATEX SEALER
9	-	PIN	1008 STEEL	ZINC PLATE PLUS YELLOW CHROMATE
8	-	O-RING	BUNA-N	NATURAL
7	-	RETAINER	302 SS	NATURAL
6	-	SPRING	MUSIC WIRE	ZINC PLATE PLUS BRIGHT CHROMATE
5	-	SHAFT	LOW CARBON STEEL	ZINC PLATE CHROMATE, PLUS SEALER
4	-	SLEEVE	1075 STEEL	ZINC IMMERSION COATING
3	-	CAM	1075 STEEL	ZINC IMMERSION COATING
2	-	CAP	DIE CASTING ZINC	SEE LIST
1	-	HOUSING	DIE CASTING ZINC	SEE LIST
-	E3-CRH-OF	ASSEMBLY	-	-
No.	PART NUMBER	TYPE OF COMPONENT	MATERIAL	FINISH

- NOTES:
- OPERATION: 195° TURN OF DRIVER CAUSES CAM TO ROTATE THEN PULL UP AS SHOWN.
  - DETERMINE TOTAL GRIP BY ADDING MAX, OUTER DOOR THICKNESS(INCLUDE ALL ACCESSORIES) PLUS COMPRESSED GASKETS AND FRAME THICKNESS.
  - INSTALLATION:
    - INSTALL LATCH INTO HOLE IN DOOR. CHECK FOR PROPER ORIENTATION AND OPERATION WITH CAM.
    - INSTALL USING LOCKWASHERS AND MOUNTING NUT (27mm ACROSS FLATS). MAXIMUM TIGHTENING TORQUE 20Nm.
    - INSTALL JAM NUTS, LOCKWASHERS,CAM ON THE SHAFT AS SHOWN. ADJUST JAM NUTS TO POSITION CAM AT CORRECT GRIP (WITH LATCH CLOSED). TIGHTEN JAM NUTS (20Nm MAX. TORQUE) USING TWO 17mm WRENCHES.
  - CAUTION: ADJUST CAM SO THAT NO MORE THAN 7.9Nm TORQUE IS REQUIRED TO CLOSE THE LATCH.
  - CHOOSE CAM ACCORDING TO GRIP RANGE FROM CAM TABLE.
  - FOR ALTERNATIVE LATCH PACKAGING WITH CAM, SEE DRAWING J-E3-C-12-3A.
  - LATCH HEADSTYLE FITTING WITH KEY:
    - KEY OD Ø13.3 MAX
    - KEY OD Ø18 MAX

THIRD ANGLE PROJECTION

MILLIMETERS [IN]

TOLERANCES UNLESS OTHERWISE NOTED

ALL DIMENSIONS WITHOUT TOLERANCES ARE FOR REFERENCE ONLY.

PROPRIETARY ITEM  
EXCEPT FOR USES EXPRESSLY GRANTED IN WRITING, INFORMATION DISCLOSED HEREON IS CONFIDENTIAL AND ALL RIGHTS, PATENT AND OTHERWISE, ARE RESERVED BY SOUTHCO, INC.

PER ASME Y14.5M-1994

DESCRIPTION: ZINC COMPACT E3 LATCH VISE ACTION SERIES ADJUSTABLE

SIZE: A3 SYSTEM: NX DWG NO.: J-E3-C-12-3

DRAWN BY: CL/BX DATE: 30JUL2015 SCALE: 1:1 SHEET: 1 OF 1

**southco**  
 CONNECT • CREATE • INNOVATE