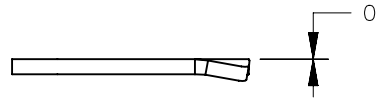
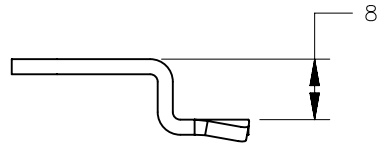


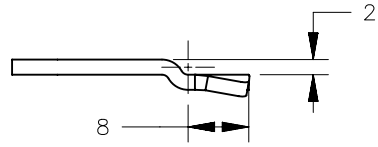
REVISION HISTORY			
REV	DATE	BY	DESCRIPTION
A	26APR2018	RM/EC	IPN: IP-2018-1172



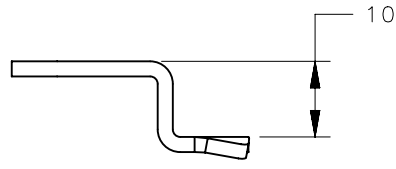
PART NUMBER: E5-3010  
YY=10



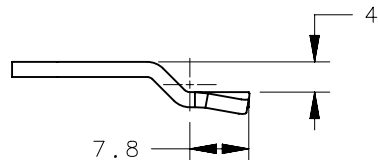
PART NUMBER: E5-3014  
YY=14



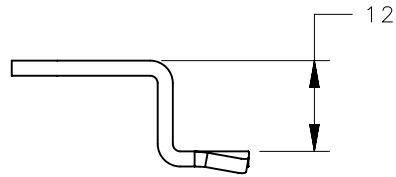
PART NUMBER: E5-3011  
YY=11



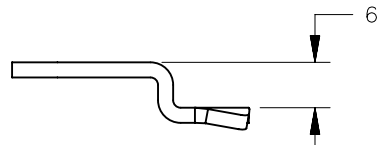
PART NUMBER: E5-3015  
YY=15



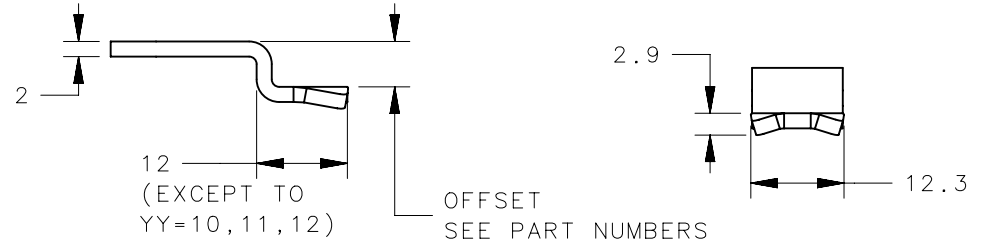
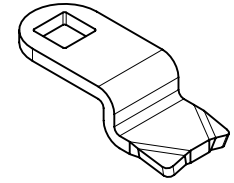
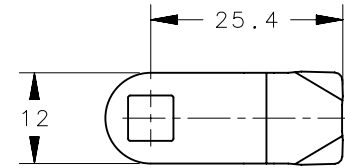
PART NUMBER: E5-3012  
YY=12



PART NUMBER: E5-3016  
YY=16



PART NUMBER: E5-3013  
YY=13



E5-30YY	CAM	STEEL	ZINC PLATE CHROMATE
PART NUMBER	TYPE OF COMPONENT	MATERIAL	FINISH

	THIRD ANGLE PROJECTION			 CONNECT • CREATE • INNOVATE			
	MILLIMETERS [IN]						
	TOLERANCES UNLESS OTHERWISE NOTED	DESCRIPTION					
SURFACE AREA	ALL DIMENSIONS WITHOUT TOLERANCES ARE FOR REFERENCE ONLY.	CAM					
VOLUME		BENT DOWN POSITION					
PROPRIETARY ITEM	PER ASME Y14.5M-1994	SIZE	SYSTEM	DWG NO.			
EXCEPT FOR USES EXPRESSLY GRANTED IN WRITING, INFORMATION DISCLOSED HEREON IS CONFIDENTIAL AND ALL RIGHTS, PATENT AND OTHERWISE, ARE RESERVED BY SOUTHCO, INC.		A4	NX	J-E5-30-A			
		DRAWN BY	DATE	SCALE	SHEET		
		RM	26APR2018	1:1	1 OF 1		