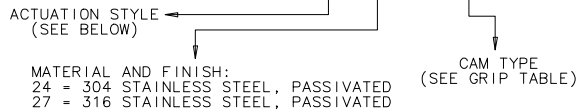


REV	DATE	DRAWN/CHKD	DESCRIPTION
A	16NOV2005	MGG	PRN: P2005-1653
B	19NOV2020	CMS/MDW	PRN: P2020-2147

PART NUMBER: E5-32- WW X - YY 1



MILLIMETERS

ALL DIMENSIONS WITHOUT TOLERANCES ARE FOR REFERENCE ONLY

THIRD ANGLE PROJECTION

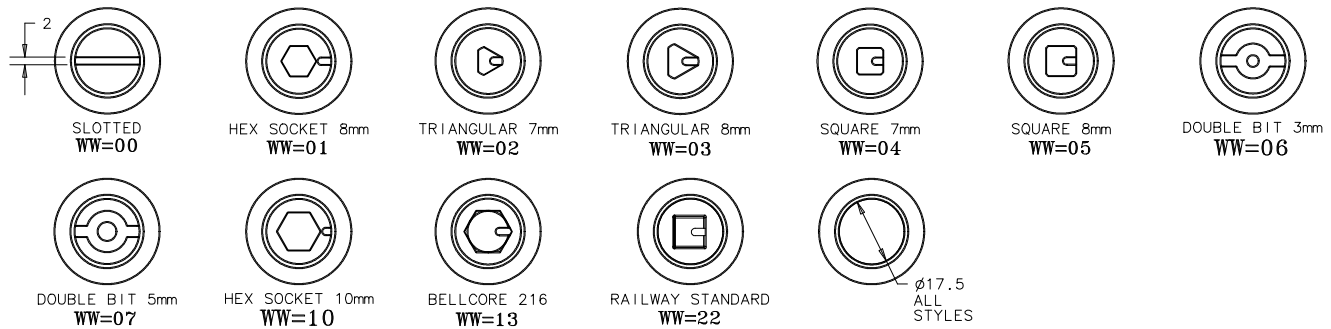
A3 PAPER SIZE

SHEET 1 OF 2

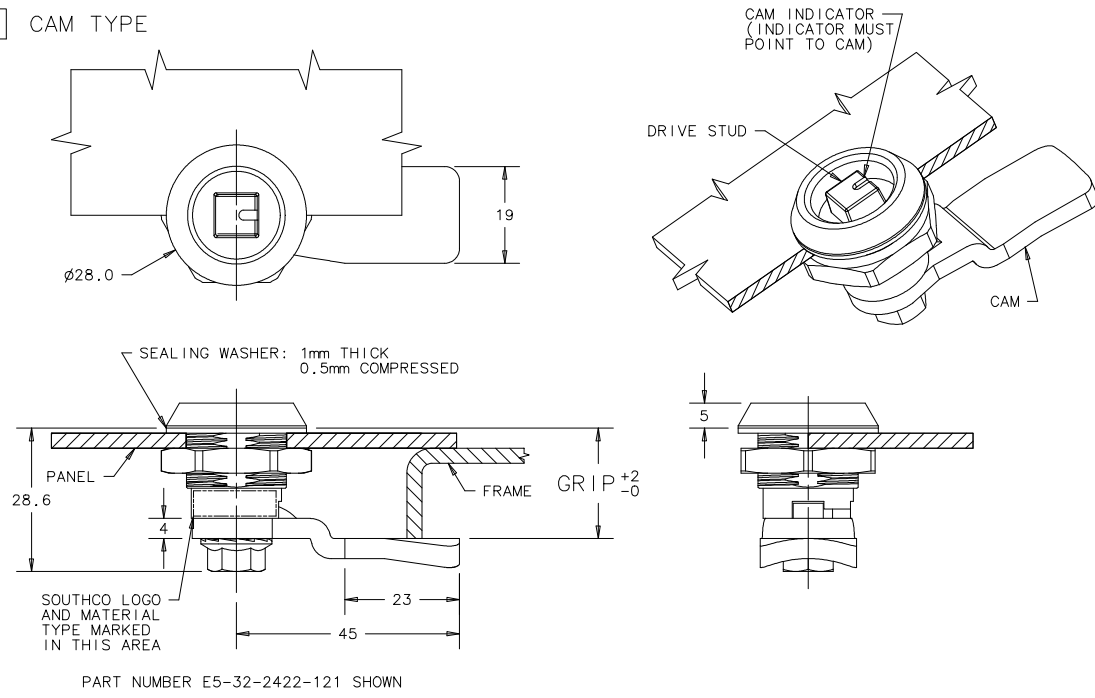
NOTES:

- SEE SHEET 2 FOR INSTALLATION INSTRUCTIONS.
- UU CAM TYPE INDICATES THAT CAM IS ORDERED AND SHIPPED SEPARATELY.
- SEALING WASHER AND MOUNTING NUT INCLUDED WITH ALL TYPES.

WW ACTUATION STYLE



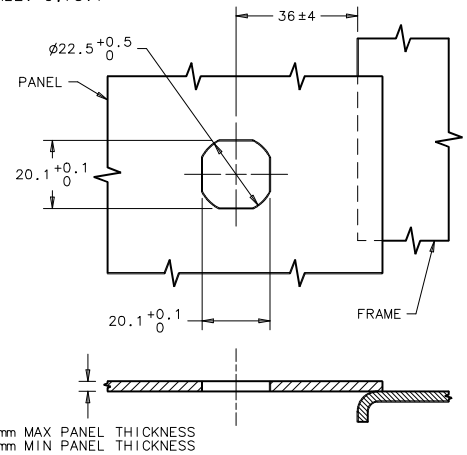
YY CAM TYPE



YY	GRIP
UU	SEE NOTE 2
03	4mm
04	6mm
05	8mm
06	10mm
07	12mm
08	14mm
09	16mm
10	18mm
11	20mm
12	22mm
13	24mm
14	26mm
15	28mm
16	30mm
17	32mm
18	34mm
19	36mm
20	38mm
21	40mm
22	42mm

PANEL PREPARATION

SCALE: 0.75:1



MATERIAL AND FINISH:

- HOUSING: 304 AND 316, PASSIVATED
- DRIVE STUD: 304 AND 316, PASSIVATED
- CAM: 304, PASSIVATED, 316, ELECTROPOLISHED
- MOUNTING NUT: 316, PASSIVATED
- CAM MOUNTING SCREW: 316, PASSIVATED
- INTERNAL SPRING: 302 PASSIVATED
- O-RING: NITRILE, BLACK
- SEALING WASHER: POLYURETHANE, BLACK

REV	DATE	DRAWN/CHKD	DESCRIPTION
A	16NOV2005	MGG	PRN: P2005-1653
B	19NOV2020	CMS/MDW	PRN: P2020-2147

NOTES:

1. SEE SHEET 1 FOR PART NUMBERS, MATERIAL AND FINISH, AND PANEL PREPARATION.

MILLIMETERS

ALL DIMENSIONS WITHOUT TOLERANCES ARE FOR REFERENCE ONLY

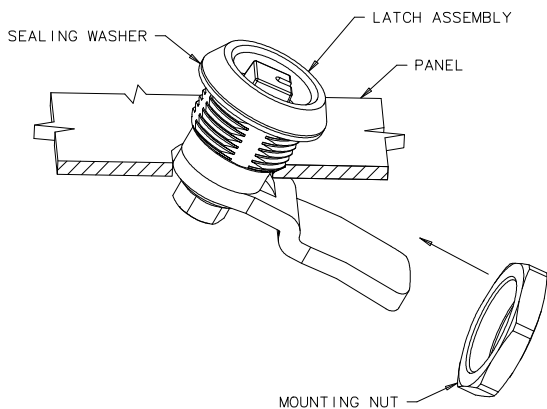


SHEET 2 OF 2

INSTALLATION METHOD 1

USE WHEN GRIP IS EQUAL TO OR EXCEEDS PANEL THICKNESS BY 9mm.

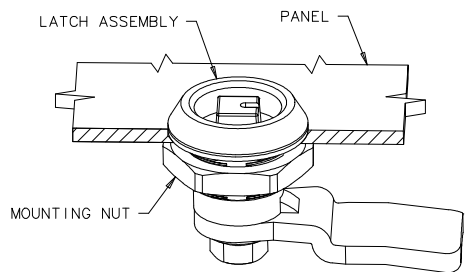
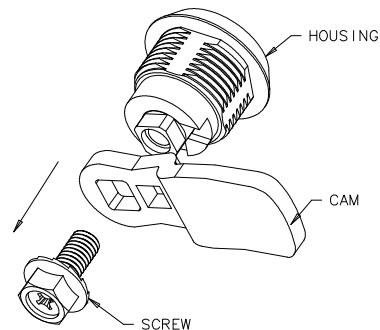
1. PLACE SEALING WASHER ONTO LATCH HOUSING.
2. TILT LATCH THROUGH MOUNTING HOLE.
3. INSTALL MOUNTING NUT AND TIGHTEN TO 20Nm MAX.



INSTALLATION METHOD 2

REQUIRED WHEN GRIP DOES NOT EXCEED PANEL THICKNESS BY 9mm.

1. REMOVE SCREW FROM HOUSING, DETACHING CAM FROM LATCH ASSEMBLY.
2. PLACE SEALING WASHER ONTO LATCH HOUSING.
3. INSERT HOUSING ASSEMBLY INTO MOUNTING HOLE, ENSURING THAT CAM INDICATOR POINTS TO INTENDED CAM LOCATION.
4. INSTALL MOUNTING NUT AND TIGHTEN TO 20Nm MAX.
5. RE-ATTACH CAM TO HOUSING ASSEMBLY, ENSURING THAT CAM IS ALLIGNED WITH CAM INDICATOR.
6. INSTALL SCREW AND TIGHTEN TO 10Nm MAX.



PART NUMBER E5-32-2422-121 SHOWN

