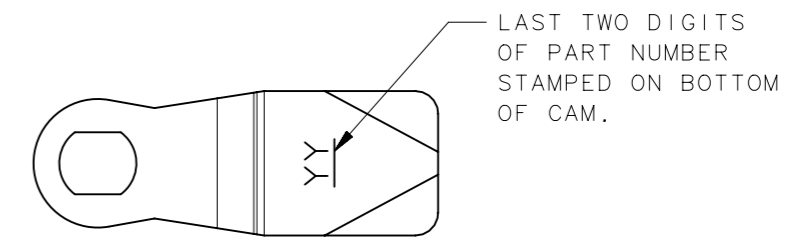
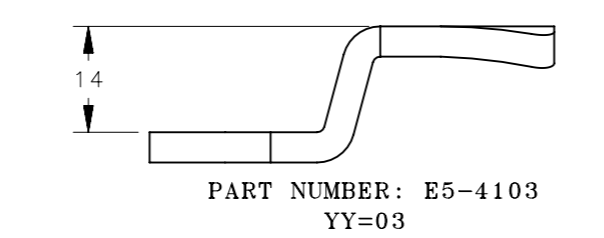
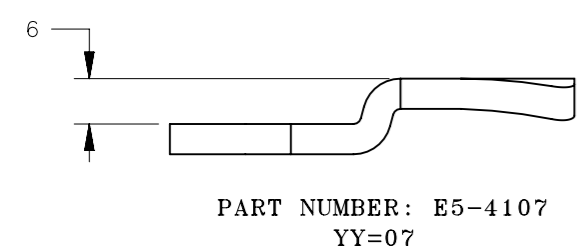
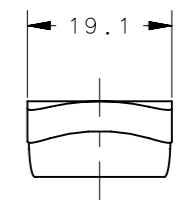
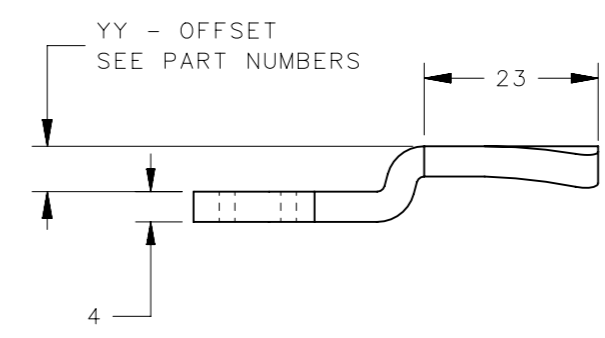
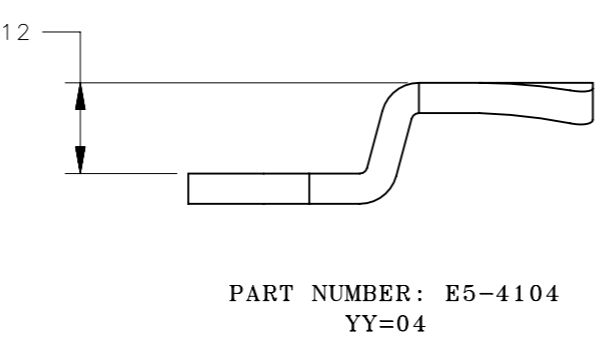
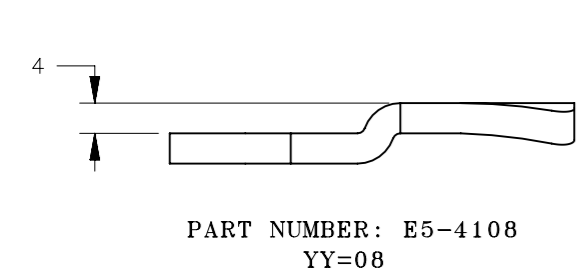
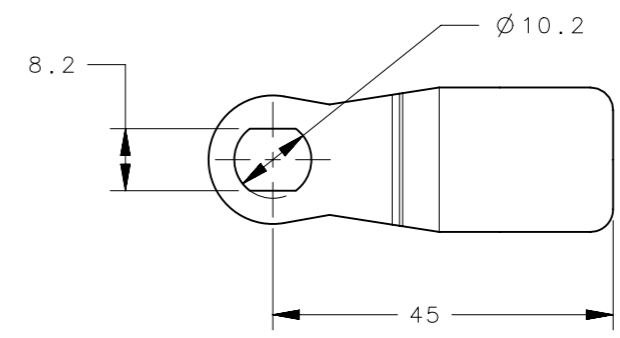
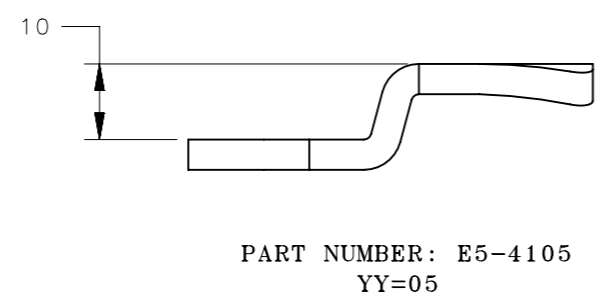
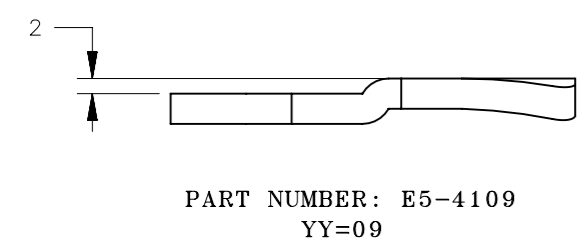
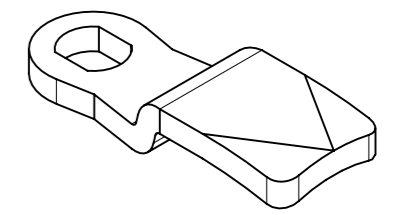
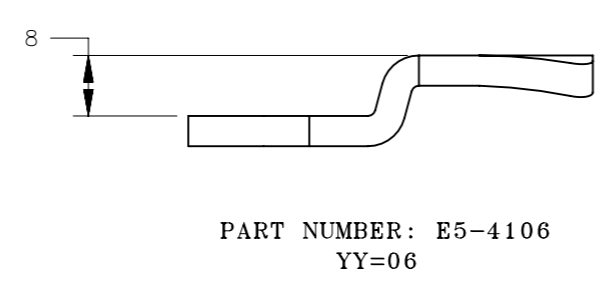
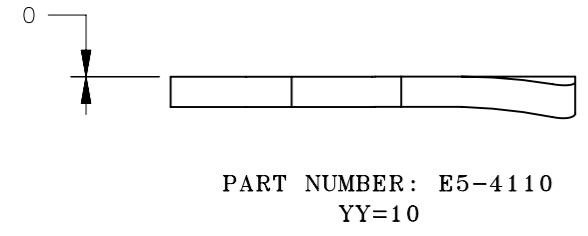


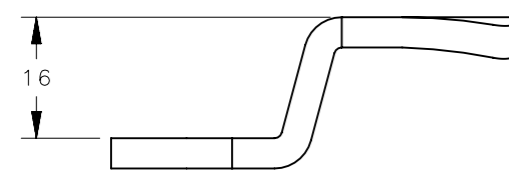
REVISION HISTORY			
REV	DATE	BY	DESCRIPTION
A	13MAY2022	BVH	PRN: IP-2022-1241



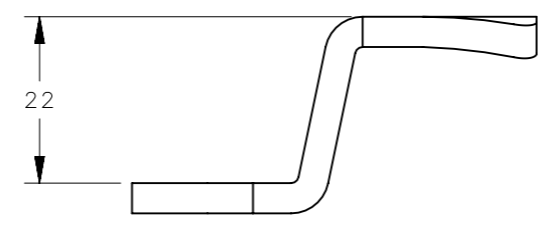
E5-41YY-77	E5 CAMS	STEEL	ZINC NICKEL PLATING
E5-41YY	E5 CAMS	STEEL	ZINC PLATE, BRIGHT CHROMATE
PART NUMBER	TYPE OF COMPONENT	MATERIAL	FINISH

CPB NUMBER 2019-1284	THIRD ANGLE PROJECTION			
SURFACE AREA	MILLIMETERS [IN]			
VOLUME	TOLERANCES UNLESS OTHERWISE NOTED	DESCRIPTION E5 CAMS - BENT UP POSITION INDUSTRIAL SERIES		
PROPRIETARY ITEM EXCEPT FOR USES EXPRESSLY GRANTED IN WRITING, INFORMATION DISCLOSED HEREON IS CONFIDENTIAL AND ALL RIGHTS, PATENT AND OTHERWISE, ARE RESERVED BY SOUTHCO, INC.	ALL DIMENSIONS WITHOUT TOLERANCES ARE FOR REFERENCE ONLY.	SIZE A3	SYSTEM NX	DWG NO. J-E5-41-B
PER ASME Y14.5M-1994		DRAWN BY BVH	DATE 15NOV2021	SCALE 1:1
				SHEET 1 OF 2

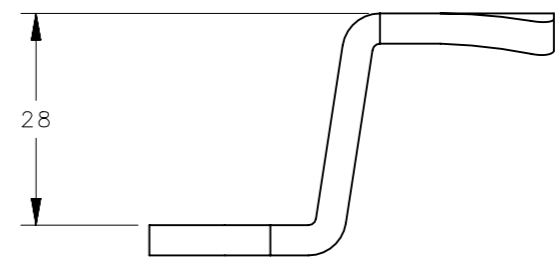
REVISION HISTORY			
REV	DATE	BY	DESCRIPTION
A	13MAY2022	BVH	PRN: IP-2022-1241



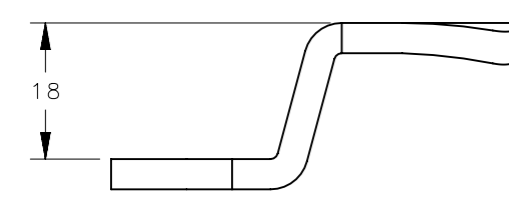
PART NUMBER: E5-4102
YY=02



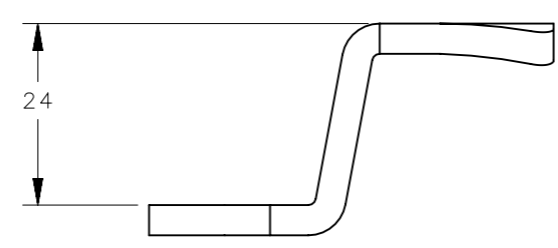
PART NUMBER: E5-4124
YY=24



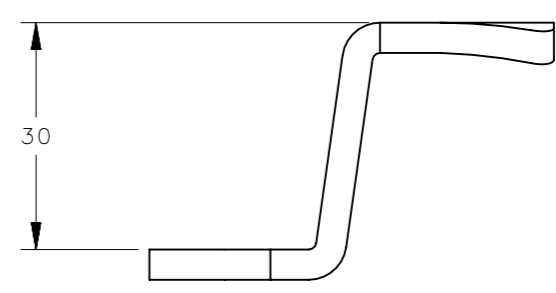
PART NUMBER: E5-4127
YY=27



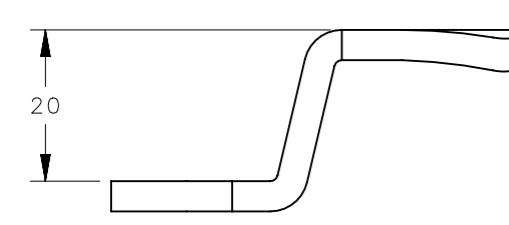
PART NUMBER: E5-4101
YY=01



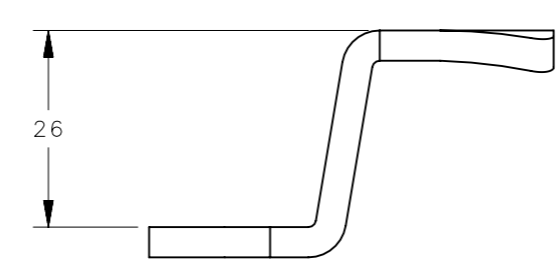
PART NUMBER: E5-4125
YY=25



PART NUMBER: E5-4128
YY=28



PART NUMBER: E5-4123
YY=23



PART NUMBER: E5-4126
YY=26

CPB NUMBER 2019-1284	THIRD ANGLE PROJECTION		
	MILLIMETERS [IN]		
SURFACE AREA	TOLERANCES UNLESS OTHERWISE NOTED	DESCRIPTION E5 CAMS - BENT UP POSITION INDUSTRIAL SERIES	
VOLUME	ALL DIMENSIONS WITHOUT TOLERANCES ARE FOR REFERENCE ONLY.	SIZE A3	SYSTEM NX
PROPRIETARY ITEM EXCEPT FOR USES EXPRESSLY GRANTED IN WRITING, INFORMATION DISCLOSED HEREON IS CONFIDENTIAL AND ALL RIGHTS, PATENT AND OTHERWISE, ARE RESERVED BY SOUTHCO, INC.	PER ASME Y14.5M-1994	DWG NO. J-E5-41-B	DATE 15NOV2021
		DRAWN BY BVH	SCALE 1:1
			SHEET 2 OF 2