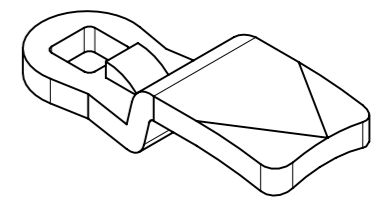
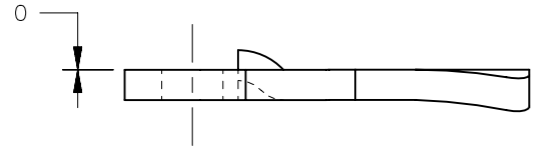


REVISION HISTORY			
REV	DATE	BY	DESCRIPTION
A	27AUG2012	DMS/YGC	PRN: P2009-0459

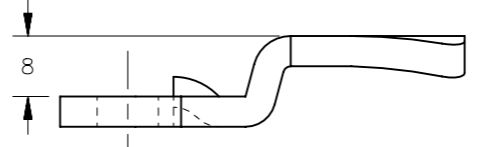


SCALE 1:1

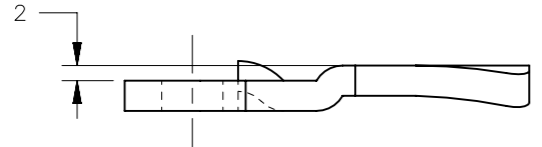
D



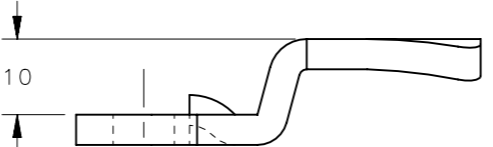
PART NUMBER: E5-6010  
YY=10



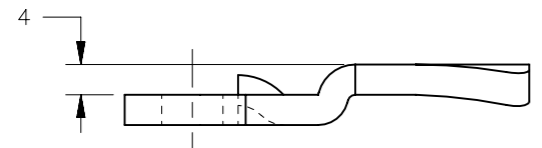
PART NUMBER: E5-6006  
YY=06



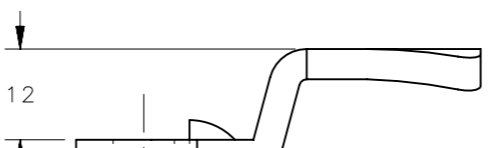
PART NUMBER: E5-6009  
YY=09



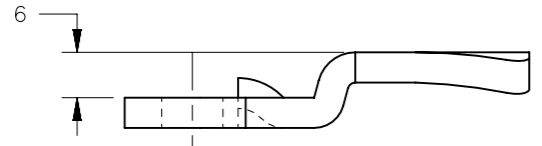
PART NUMBER: E5-6005  
YY=05



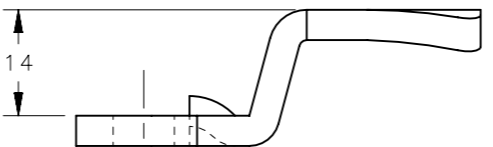
PART NUMBER: E5-6008  
YY=08



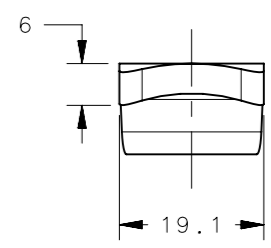
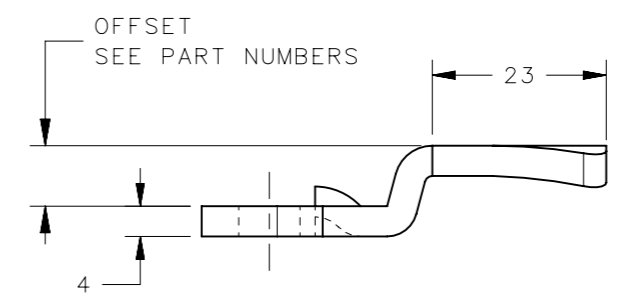
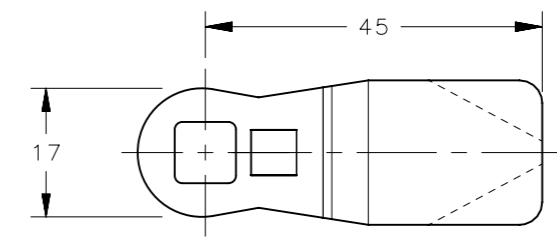
PART NUMBER: E5-6004  
YY=04



PART NUMBER: E5-6007  
YY=07



PART NUMBER: E5-6003  
YY=03



C

B

A

E5-60YY		E5 CAMS	STEEL	ZINC PLATE CHROMATE DIP
PART NUMBER		TYPE OF COMPONENT	MATERIAL	FINISH
THIRD ANGLE PROJECTION				
MILLIMETERS [IN]				
SURFACE AREA		TOLERANCES UNLESS OTHERWISE NOTED		
VOLUME		ALL DIMENSIONS WITHOUT TOLERANCES ARE FOR REFERENCE ONLY.		
PROPRIETARY ITEM		SIZE	SYSTEM	DWG NO.
EXCEPT FOR USES EXPRESSLY GRANTED IN WRITING, INFORMATION DISCLOSED HEREON IS CONFIDENTIAL AND ALL RIGHTS, PATENT AND OTHERWISE, ARE RESERVED BY SOUTHCO, INC.		A3	NX	J-E5-60-B
PER ASME Y14.5M-1994		DRAWN BY	DATE	SCALE
		RLR/MJS	26SEP2006	1:1
				SHEET 1 OF 1

6

5

4

3

2

1