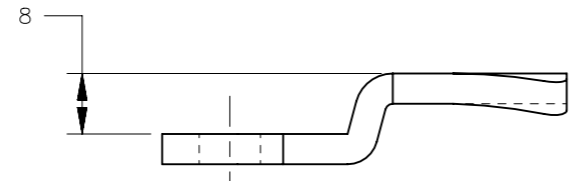


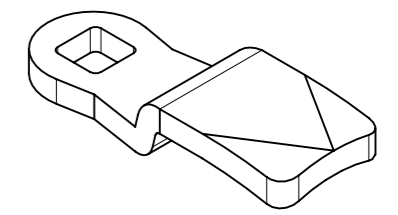
REVISION HISTORY			
REV	DATE	BY	DESCRIPTION
D	30OCT2019	MJS/TMS	PRN: P2019-2638



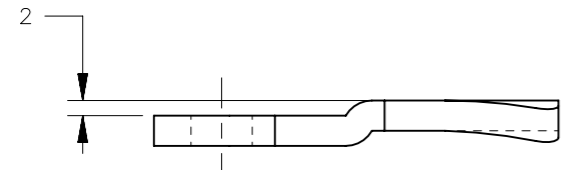
PART NUMBER: E5-6110
YY=10



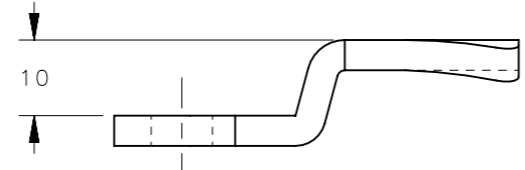
PART NUMBER: E5-6106
YY=06



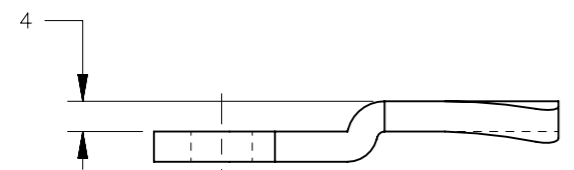
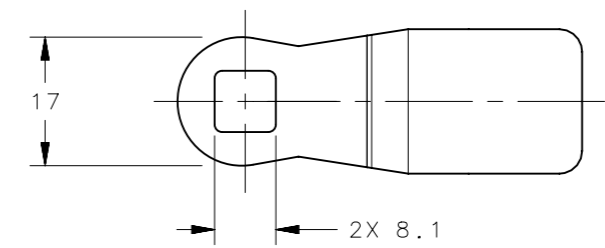
SCALE 1:1



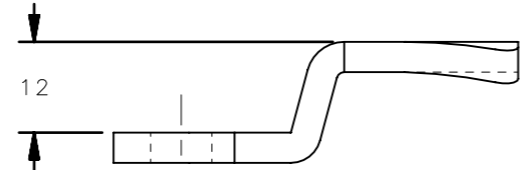
PART NUMBER: E5-6109
YY=09



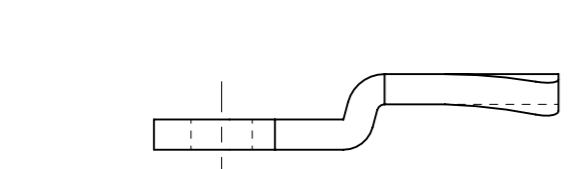
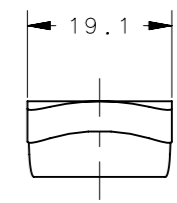
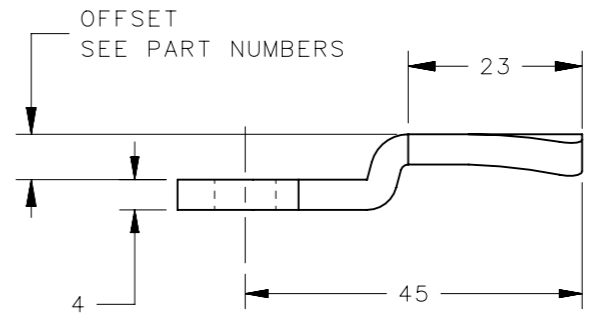
PART NUMBER: E5-6105
YY=05



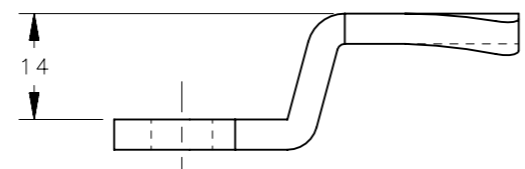
PART NUMBER: E5-6108
YY=08



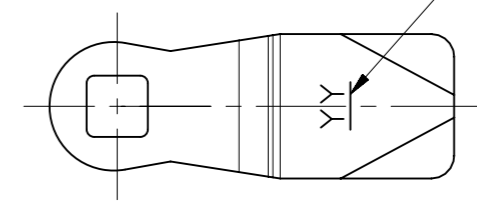
PART NUMBER: E5-6104
YY=04



PART NUMBER: E5-6107
YY=07



PART NUMBER: E5-6103
YY=03



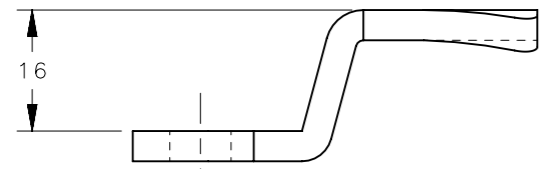
LAST TWO DIGITS
OF PART NUMBER
STAMPED ON BOTTOM
OF CAM.

PART NUMBER E5-6106 SHOWN.

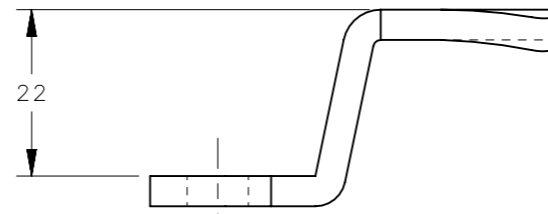
E5-61YY-77	E5 CAMS	STEEL	ZINC NICKEL PLATING
E5-61YY	E5 CAMS	STEEL	ZINC PLATE, BRIGHT CHROMATE
PART NUMBER	TYPE OF COMPONENT	MATERIAL	FINISH

CPB NUMBER STANDARD	THIRD ANGLE PROJECTION		
	MILLIMETERS [IN]		
SURFACE AREA	TOLERANCES UNLESS OTHERWISE NOTED	DESCRIPTION E5 CAMS - BENT UP POSITION INDUSTRIAL SERIES	
VOLUME	ALL DIMENSIONS WITHOUT TOLERANCES ARE FOR REFERENCE ONLY.	SIZE A3	SYSTEM NX
PROPRIETARY ITEM EXCEPT FOR USES EXPRESSLY GRANTED IN WRITING, INFORMATION DISCLOSED HEREON IS CONFIDENTIAL AND ALL RIGHTS, PATENT AND OTHERWISE, ARE RESERVED BY SOUTHCO, INC.	PER ASME Y14.5M-1994	DWG NO. J-E5-61-B	DATE 30JUN2005
		DRAWN BY AAB/MDY	SCALE 1:1
			SHEET 1 OF 2

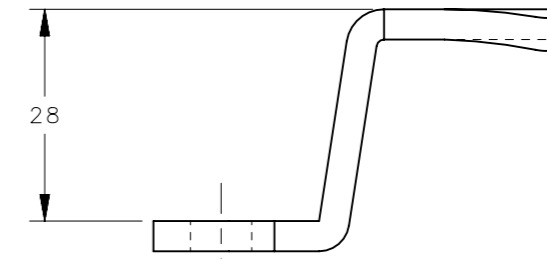
REVISION HISTORY			
REV	DATE	BY	DESCRIPTION
D	30OCT2019	MJS/TMS	PRN: P2019-2638



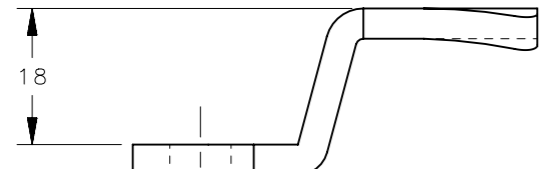
PART NUMBER: E5-6102
YY=02



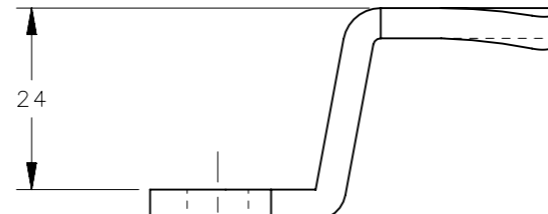
PART NUMBER: E5-6124
YY=24



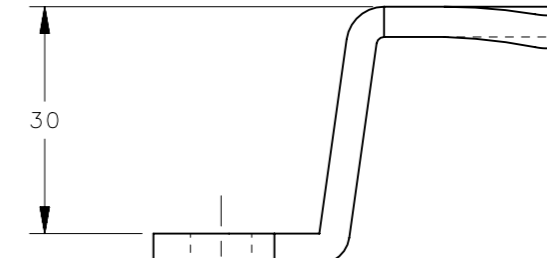
PART NUMBER: E5-6127
YY=27



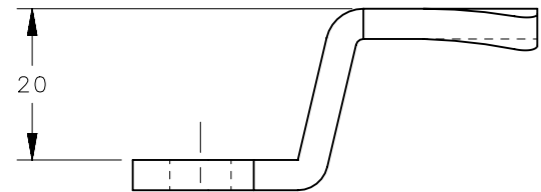
PART NUMBER: E5-6101
YY=01



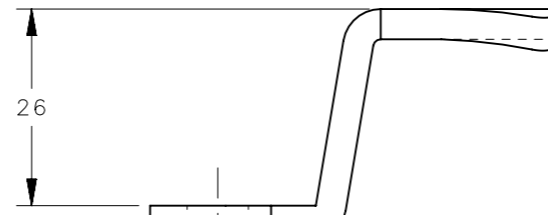
PART NUMBER: E5-6125
YY=25




PART NUMBER: E5-6128
YY=28



PART NUMBER: E5-6123
YY=23



PART NUMBER: E5-6126
YY=26

CPB NUMBER	STANDARD	THIRD ANGLE PROJECTION			
		MILLIMETERS [IN]			
SURFACE AREA	TOLERANCES UNLESS OTHERWISE NOTED		DESCRIPTION E5 CAMS - BENT UP POSITION INDUSTRIAL SERIES		
VOLUME	ALL DIMENSIONS WITHOUT TOLERANCES ARE FOR REFERENCE ONLY.		SIZE A3	SYSTEM NX	DWG NO. J-E5-61-B
PROPRIETARY ITEM <small>EXCEPT FOR USES EXPRESSLY GRANTED IN WRITING, INFORMATION DISCLOSED HEREON IS CONFIDENTIAL AND ALL RIGHTS, PATENT AND OTHERWISE, ARE RESERVED BY SOUTHCO, INC.</small>	PER ASME Y14.5M-1994		DRAWN BY AAB/MDY	DATE 30JUN2005	SCALE 1:1
					SHEET 2 OF 2