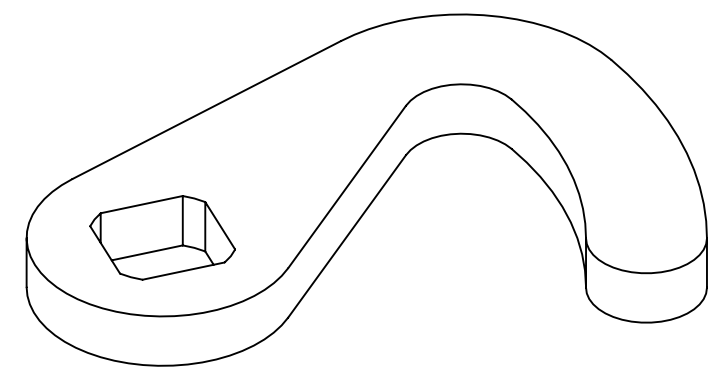
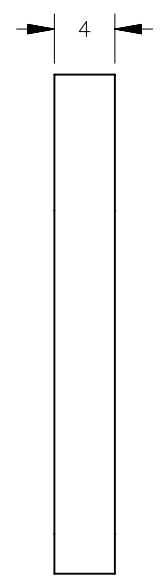
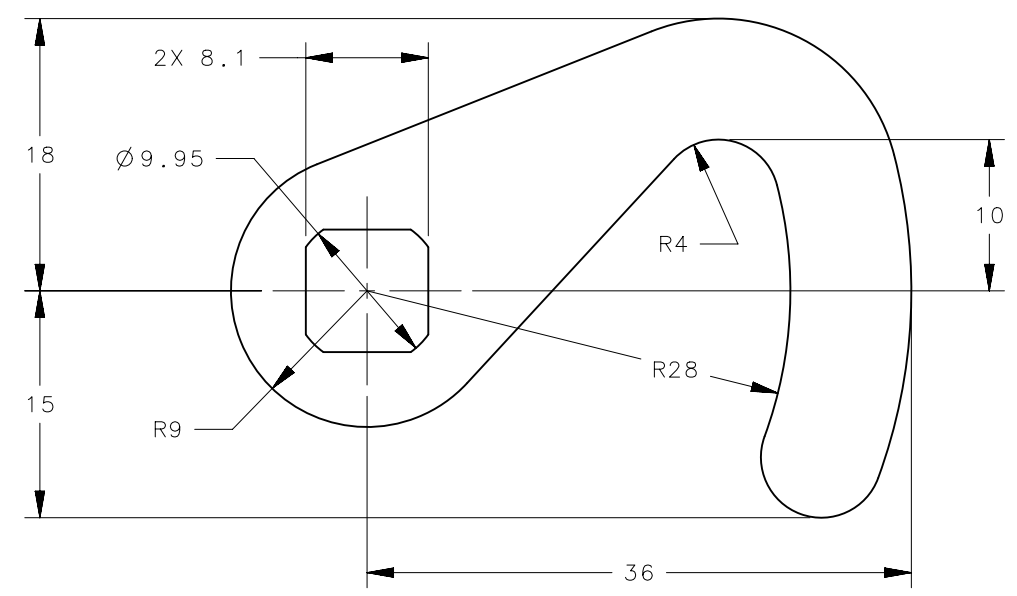
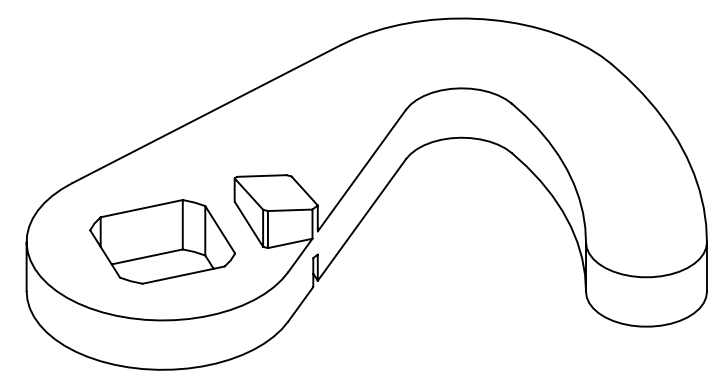
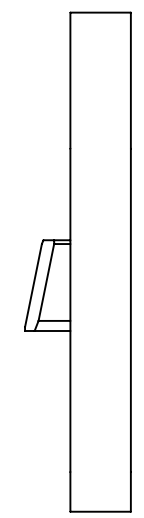
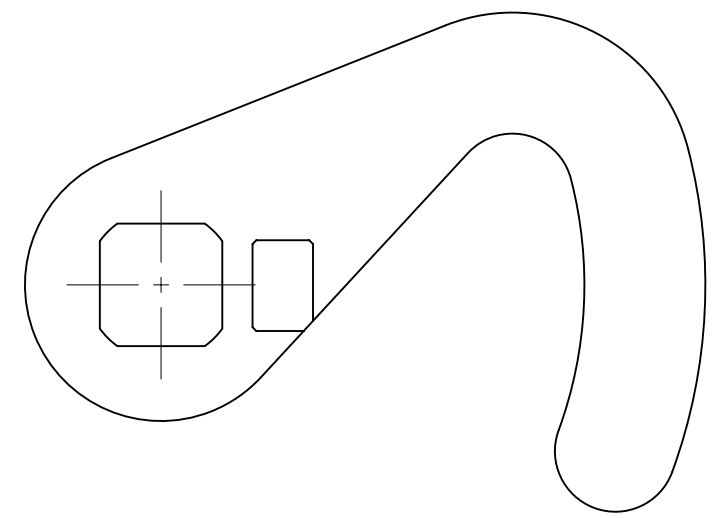


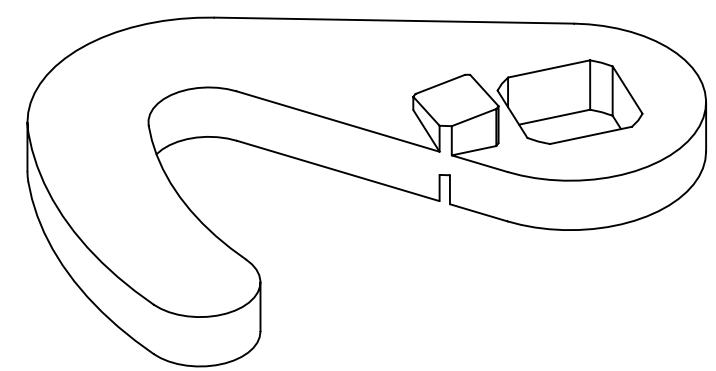
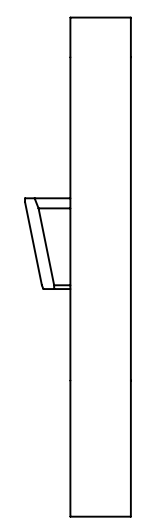
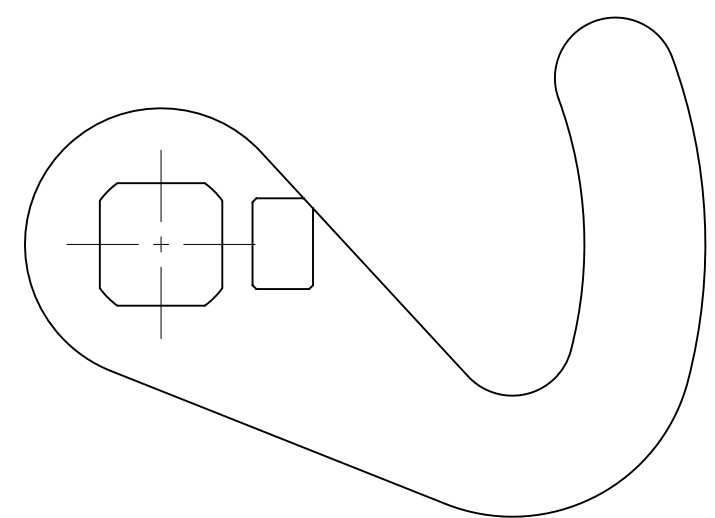
REVISION HISTORY			
REV	DATE	BY	DESCRIPTION
B	02MAY2016	PC/MJS	PRN: P2016-0943



**PART No. E5-6200**  
(FLAT VERSION)



**PART No. E5-6210**  
(RIGHT HAND VERSION)



**PART No. E5-6220**  
(LEFT HAND VERSION)

PART NUMBER	TYPE OF COMPONENT	MATERIAL	FINISH	REMARKS
E5-6200	PAWL	STEEL	ZINC PLATE, CHROMATE	FLAT
E5-6210	PAWL	STEEL	ZINC PLATE, CHROMATE	RIGHT HAND
E5-6220	PAWL	STEEL	ZINC PLATE, CHROMATE	LEFT HAND

THIRD ANGLE PROJECTION		 CONNECT • CREATE • INNOVATE		
MILLIMETERS [IN]				
TOLERANCES UNLESS OTHERWISE NOTED		DESCRIPTION		
ALL DIMENSIONS WITHOUT TOLERANCES ARE FOR REFERENCE ONLY.		E5 HOOK PAWL		
PROPRIETARY ITEM	PER ASME Y14.5M-1994	SIZE A3	SYSTEM NX	DWG NO. J-E5-6200
EXCEPT FOR USES EXPRESSLY GRANTED IN WRITING, INFORMATION DISCLOSED HEREON IS CONFIDENTIAL AND ALL RIGHTS, PATENT AND OTHERWISE, ARE RESERVED BY SOUTHCO, INC.		DRAWN BY AJH/KLC	DATE 20JUL2005	SCALE 2:1
		SHEET 1 OF 1		