

| REVISION HISTORY |           |         |                 |
|------------------|-----------|---------|-----------------|
| REV              | DATE      | BY      | DESCRIPTION     |
| F                | 28AUG2024 | CRM/DMS | PRN: P2024-1442 |

PART NUMBER: E5-6A-H F-UU D

D DOOR THICKNESS AND GRIP

**H** = HEAD STYLE (SEE BELOW)

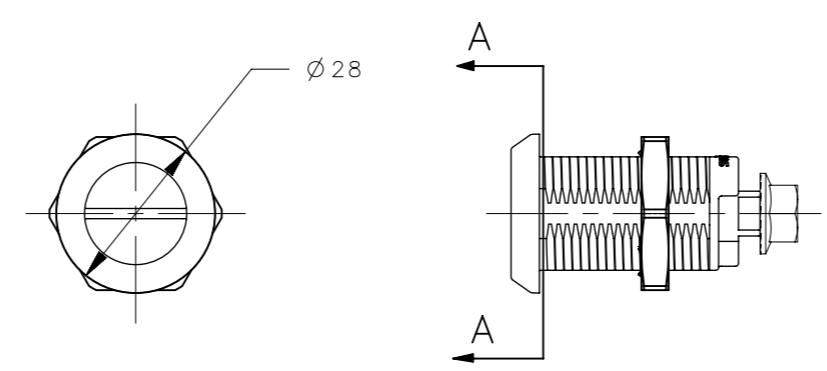
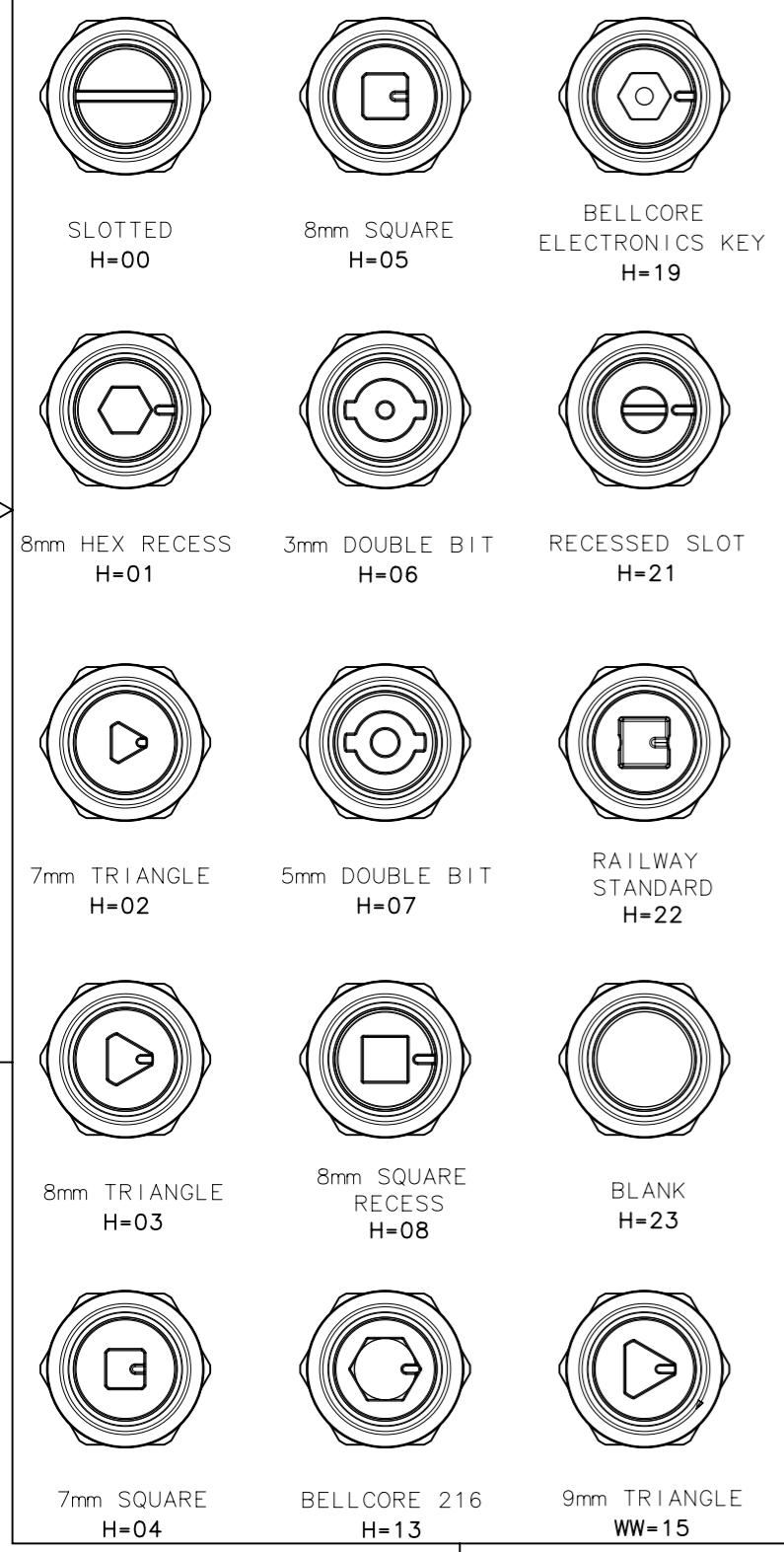
**F** = MATERIAL AND FINISH

2 = DIECAST ZINC, BRIGHT CHROME PLATE

5 = DIE CAST ZINC, BLACK POWDER COAT

| D | (T) DOOR THICKNESS | (G) GRIP RANGE |
|---|--------------------|----------------|
| 1 | 1 - 18             | 5 - 53         |
| 2 | 1 - 18             | 54 - 82        |
| 3 | 18 - 33            | 18 - 66        |
| 4 | 18 - 33            | 68 - 82        |
| 5 | 33 - 51            | 34 - 82        |

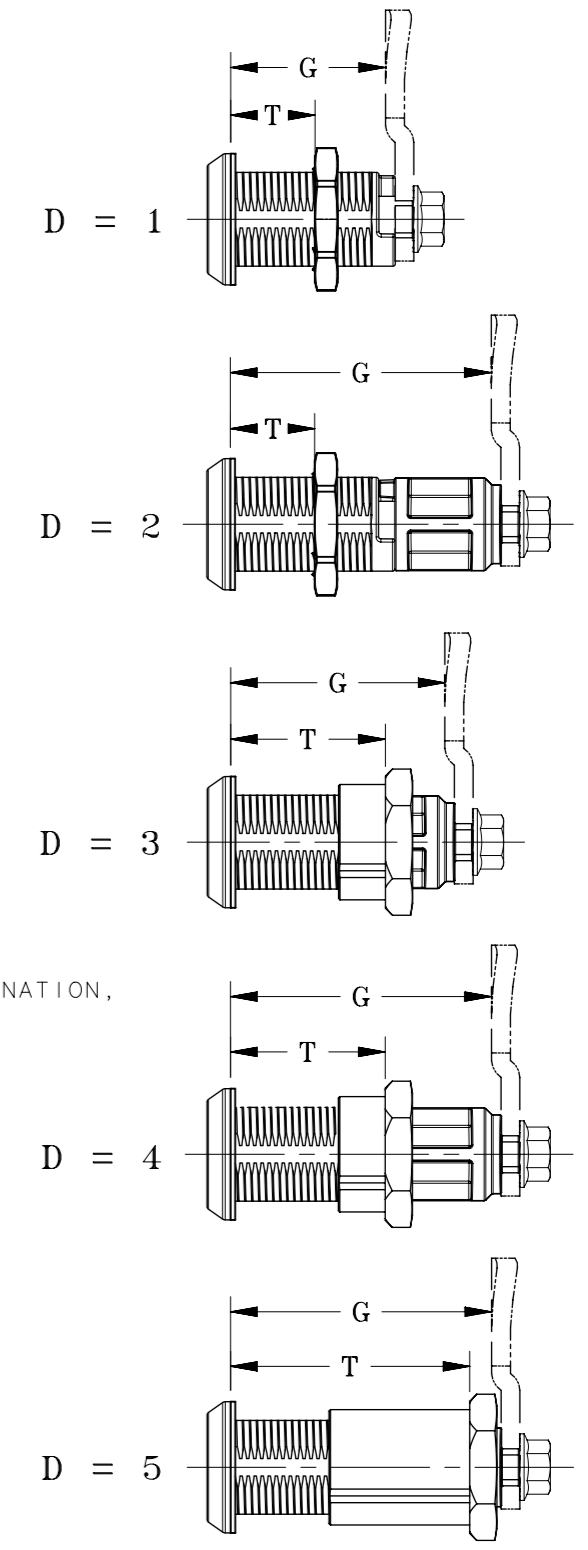
**H HEAD STYLES**



NOTES:

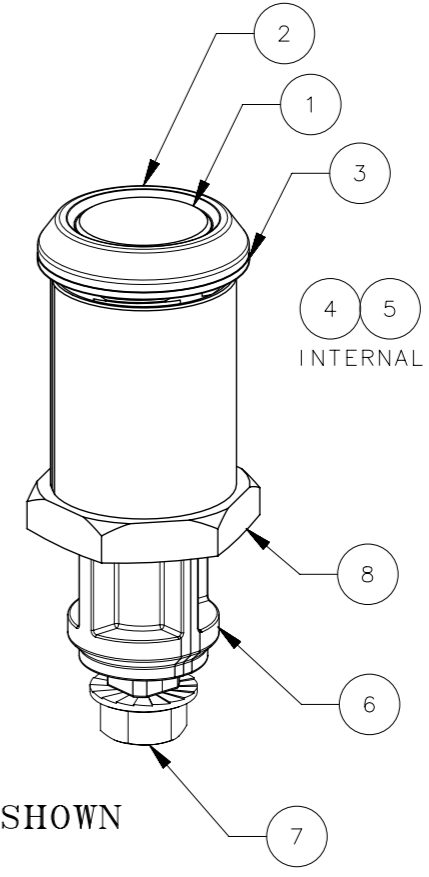
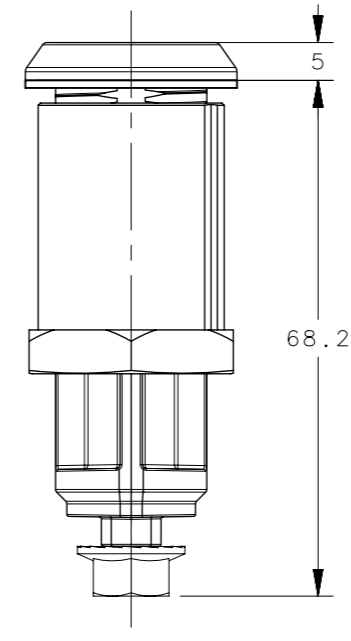
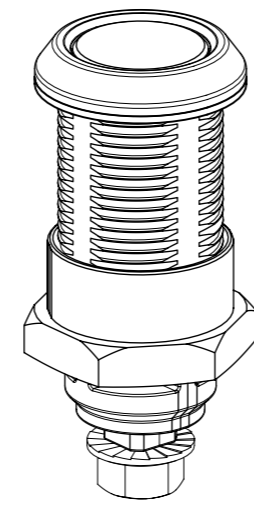
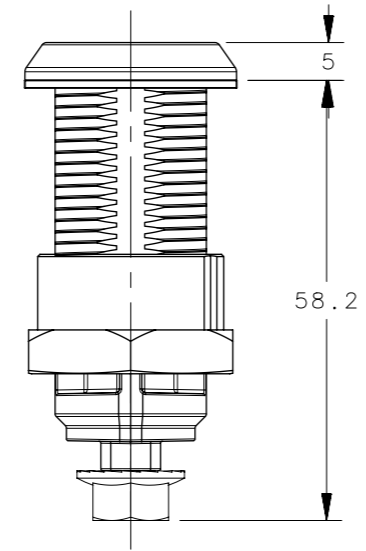
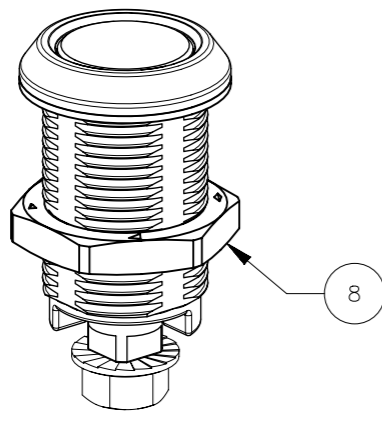
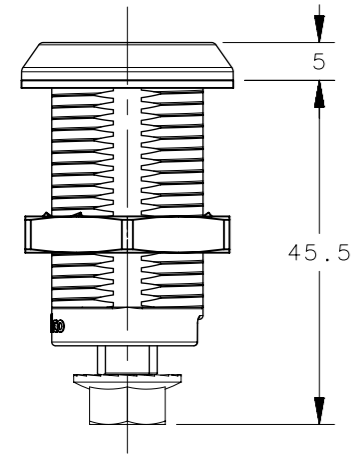
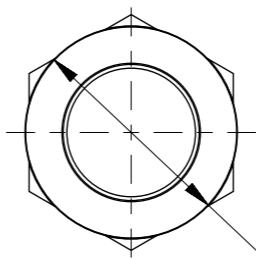
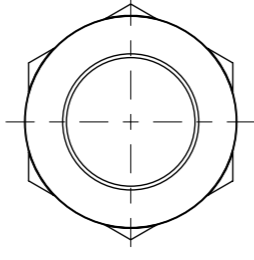
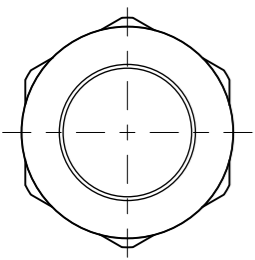
- COSMETIC SPECIFICATION:  
ALL POWDERCOATED SURFACES ABOVE SECTION A-A ARE TO CONFORM TO A CLASS "B" DESIGNATION, ALL OTHER SURFACES ARE TO CONFORM TO A CLASS "D" DESIGNATION AS DESCRIBED IN SOUTHCO COSMETIC SPECIFICATION:  
S-121-02 FOR ZINC PLATING AND SEALED PARTS  
S-121-03 FOR POWDER COATING
- LATCH ASSEMBLY CAN BE USED WITH OTHER E5 FAMILY ACCESSORIES. PLEASE REFER TO SOUTHCO HANDBOOK OR WEBSITE AT [www.Southco.com](http://www.Southco.com) FOR ENTIRE LIST.
- PACKAGING: LATCHES ARE LAYER PACKAGED IN TRAYS. CAM SCREWS AND MOUNTING NUTS ARE BULK PACKAGED SEPARATELY.
- RoHS COMPLIANT.

NOTE:  
THE BLANK DRIVER STYLE IS RECOMMENDED FOR USE IN MULTI-POINT APPLICATIONS WITH A SEPARATE ACTUATOR.



|  |   |   |                   |
|--|---|---|-------------------|
| CPB NUMBER<br>2017-1147  | THIRD ANGLE PROJECTION                                    | <b>southco</b><br>CONNECT • CREATE • INNOVATE           |                   |
|  | MILLIMETERS [IN]  |   |                   |
|  | TOLERANCES UNLESS OTHERWISE NOTED                         | DESCRIPTION<br>E5 CAM LATCH ASSEMBLY HVAC, SINGLE POINT |                   |
|  | ALL DIMENSIONS WITHOUT TOLERANCES ARE FOR REFERENCE ONLY. | SIZE<br>A3  | SYSTEM<br>NX      |
| PROPRIETARY ITEM   | PER ASME Y14.5M-2009                                      | DWG NO.<br>J-E5-6A                                      |                   |
| EXCEPT FOR USES EXPRESSLY GRANTED IN WRITING, INFORMATION DISCLOSED HEREON IS CONFIDENTIAL AND ALL RIGHTS, PATENT AND OTHERWISE, ARE RESERVED BY SOUTHCO, INC. |   | DRAWN BY<br>MJS   | DATE<br>01JUL2019 |
|  |   | SCALE<br>1:1  | SHEET<br>1 OF 8   |

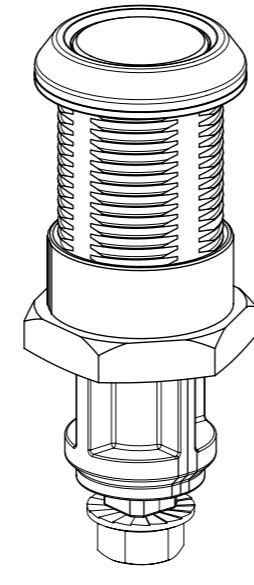
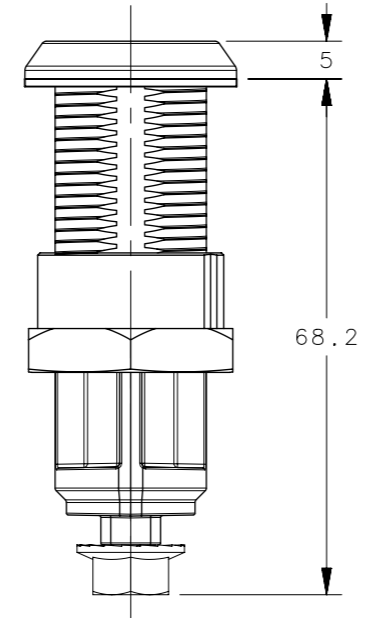
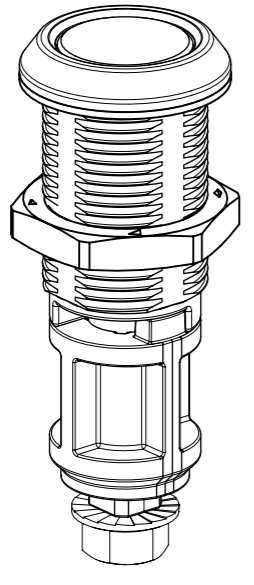
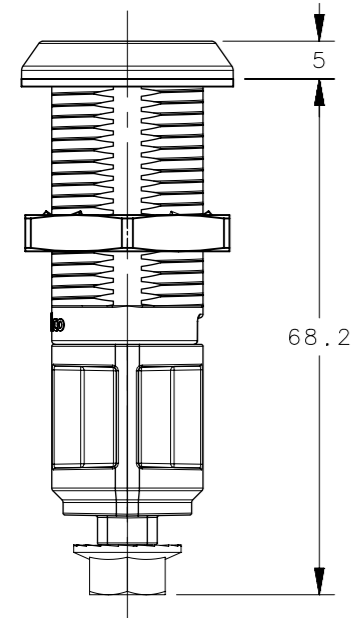
| REVISION HISTORY |           |         |                 |
|------------------|-----------|---------|-----------------|
| REV              | DATE      | BY      | DESCRIPTION     |
| F                | 28AUG2024 | CRM/DMS | PRN: P2024-1442 |



E5-6A-23F-UU1 SHOWN

E5-6A-23F-UU3 SHOWN

E5-6A-23F-UU5 SHOWN



E5-6A-23F-UU2 SHOWN

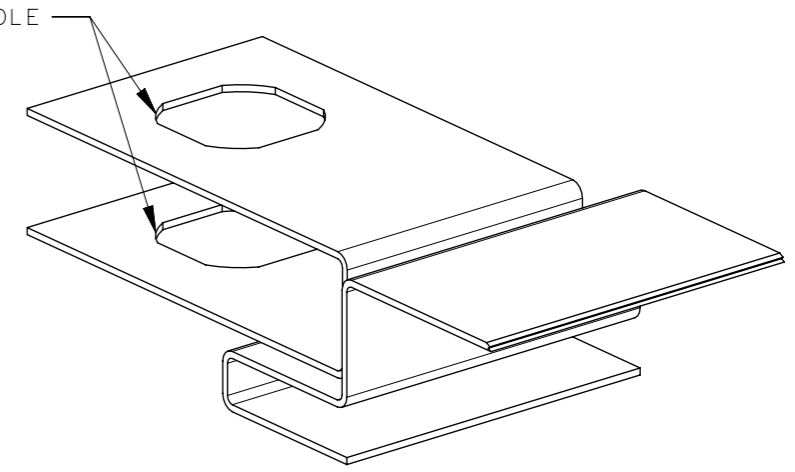
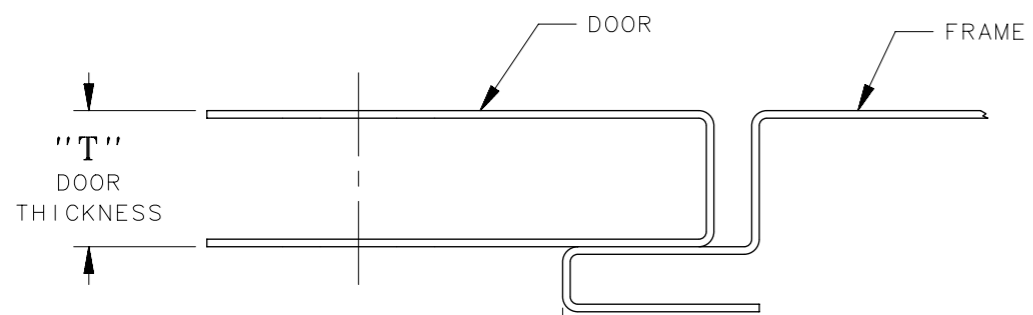
E5-6A-23F-UU4 SHOWN

| NO. | PART NUMBER   | QTY | TYPE OF COMPONENT  | MATERIAL   | GENERAL NOTES                        |
|-----|---------------|-----|--------------------|------------|--------------------------------------|
| 8   | -             | 1   | NUT                | ZINC       | CHROMATE SEALER                      |
| 7   | -             | 1   | CAM SCREW          | STEEL      | ZINC NICKEL PLATE                    |
| 6   | -             | 1   | SHAFT              | ZINC       | CHROMATE SEALER                      |
| 5   | -             | 1   | SPRING             | MUSIC WIRE | ZINC PLATE                           |
| 4   | -             | 1   | O-RING             | NITRILE    | BLACK                                |
| 3   | -             | 1   | SEALING WASHER     | LDPE       | BLACK                                |
| 2   | -             | 1   | HOUSING            | ZINC       | CHROMATE SEALER, BLACK POWDERCOATING |
| 1   | -             | 1   | DRIVER             | ZINC       | CHROMATE SEALER, BLACK POWDERCOATING |
| -   | E5-6A-WWF-UUD | -   | CAM LATCH ASSEMBLY | -          | -                                    |

|   |   |  |
|---|---|--|
| CPB NUMBER<br>2017-1147   | THIRD ANGLE PROJECTION                                    | <b>southco</b> <sup>®</sup><br>CONNECT • CREATE • INNOVATE |
|   | MILLIMETERS [IN]  |  |
|   | TOLERANCES UNLESS OTHERWISE NOTED                         | DESCRIPTION<br>E5 CAM LATCH ASSEMBLY<br>HVAC, SINGLE POINT |
|   | ALL DIMENSIONS WITHOUT TOLERANCES ARE FOR REFERENCE ONLY. | SIZE<br>A3   |
| PROPRIETARY ITEM<br><small>EXCEPT FOR USES EXPRESSLY GRANTED IN WRITING, INFORMATION DISCLOSED HEREON IS CONFIDENTIAL AND ALL RIGHTS, PATENT AND OTHERWISE, ARE RESERVED BY SOUTHCO, INC.</small> | PER ASME Y14.5M-2009                                      | SYSTEM<br>NX   |
|   |   | DWG NO.<br>J-E5-6A   |
|   |   | DRAWN BY<br>MJS  |
|   |   | DATE<br>01JUL2019  |
|   |   | SCALE<br>1:1   |
|   |   | SHEET<br>2 OF 8  |

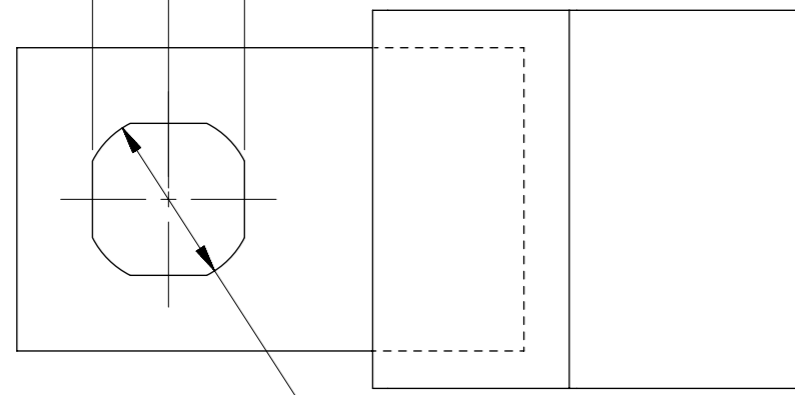
DOOR PREPARATION  
1mm - 18mm DOOR THICKNESS

| REVISION HISTORY |           |         |                 |
|------------------|-----------|---------|-----------------|
| REV              | DATE      | BY      | DESCRIPTION     |
| F                | 28AUG2024 | CRM/DMS | PRN: P2024-1442 |

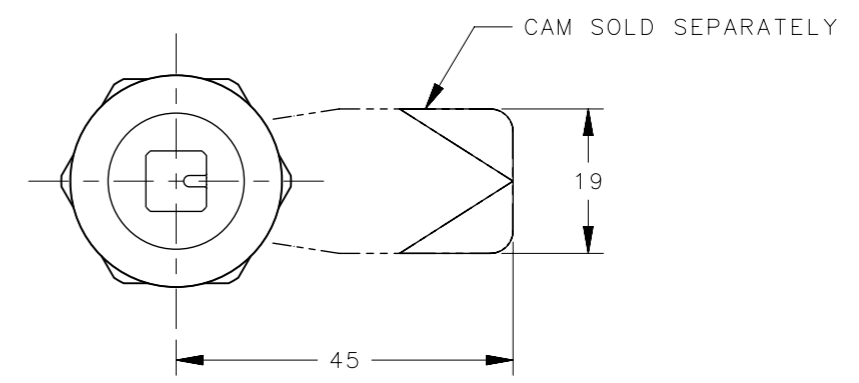


36 ±4  
RECOMMENDED

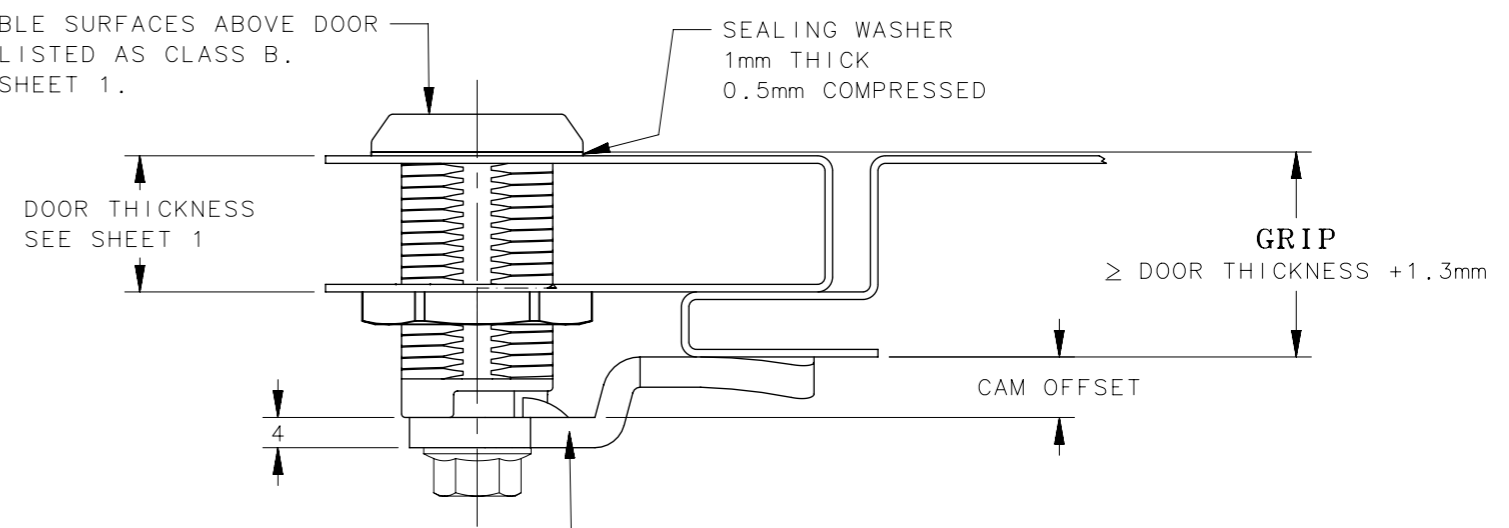
□ 20.1 <sup>+0.1</sup>/<sub>0</sub>  
AT INSIDE AND OUTSIDE OF DOOR



DOOR PREPARATION  
1mm - 18mm DOOR THICKNESS



VISIBLE SURFACES ABOVE DOOR ARE LISTED AS CLASS B. SEE SHEET 1.



CAMS SOLD SEPARATELY,  
PART NO. E5-6103 (14mm OFFSET) SHOWN  
SEE DRAWINGS J-E5-60-A, J-E5-60-B,  
J-E5-61-A, J-E5-61-B

| D | (T) DOOR THICKNESS |
|---|--------------------|
| 1 | 1 - 18             |
| 2 | 1 - 18             |
| 3 | 18 - 33            |
| 4 | 18 - 33            |
| 5 | 33 - 51            |

|  |
|--|
| CPB NUMBER<br>2017-1147  |
| THIRD ANGLE PROJECTION   |
| MILLIMETERS [IN]   |
| TOLERANCES UNLESS OTHERWISE NOTED  |
| ALL DIMENSIONS WITHOUT TOLERANCES ARE FOR REFERENCE ONLY.  |
| PER ASME Y14.5M-2009   |
| PROPRIETARY ITEM<br>EXCEPT FOR USES EXPRESSLY GRANTED IN WRITING, INFORMATION DISCLOSED HEREON IS CONFIDENTIAL AND ALL RIGHTS, PATENT AND OTHERWISE, ARE RESERVED BY SOUTHCO, INC. |

|  |
|--|
| DESCRIPTION<br>E5 CAM LATCH ASSEMBLY<br>HVAC, SINGLE POINT |
| SIZE<br>A3   |
| SYSTEM<br>NX   |
| DWG NO.<br>J-E5-6A   |
| DRAWN BY<br>MJS  |
| DATE<br>01JUL2019  |
| SCALE<br>1:1   |
| SHEET<br>3 OF 8  |

**southco**<sup>®</sup>  
CONNECT • CREATE • INNOVATE

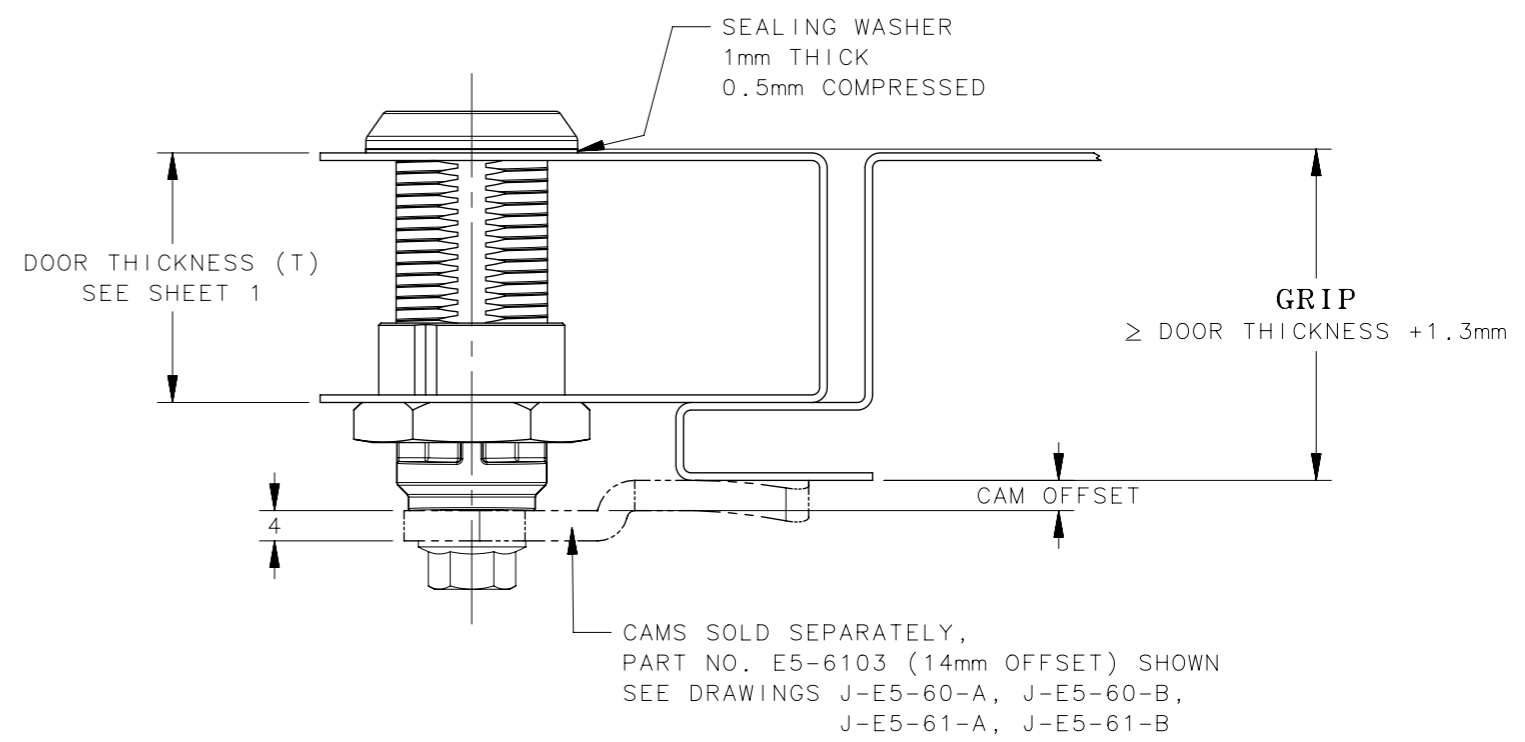
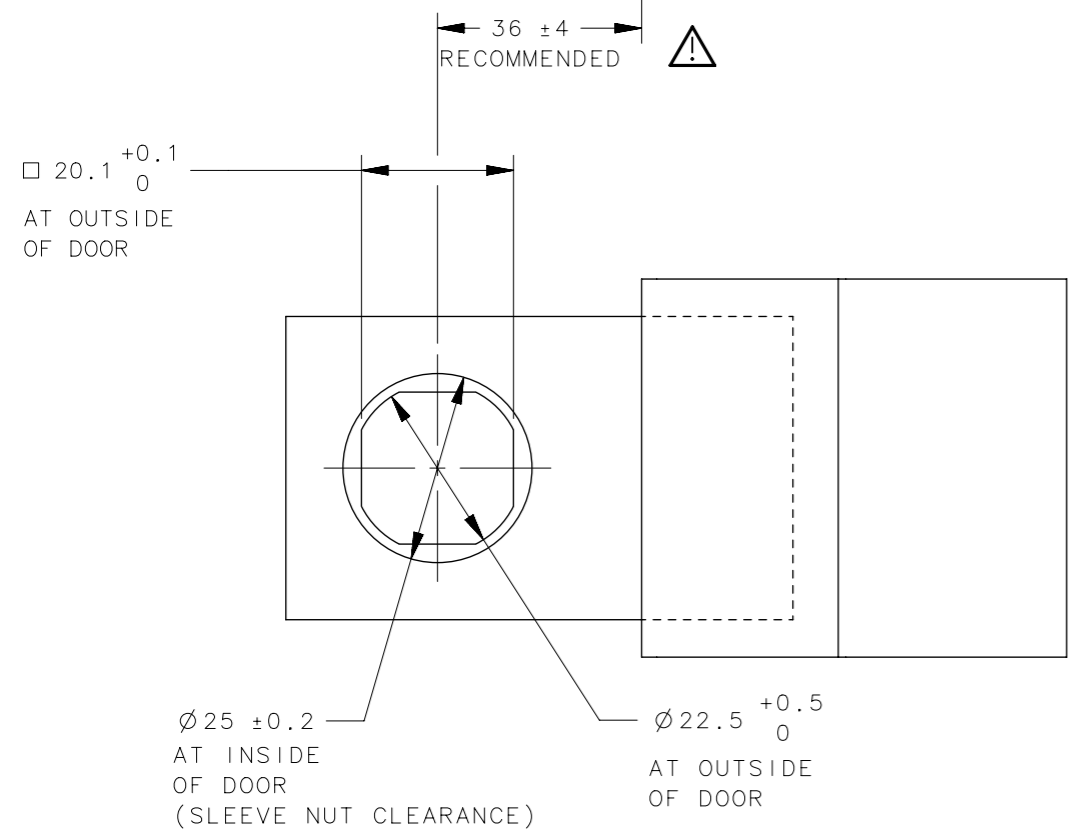
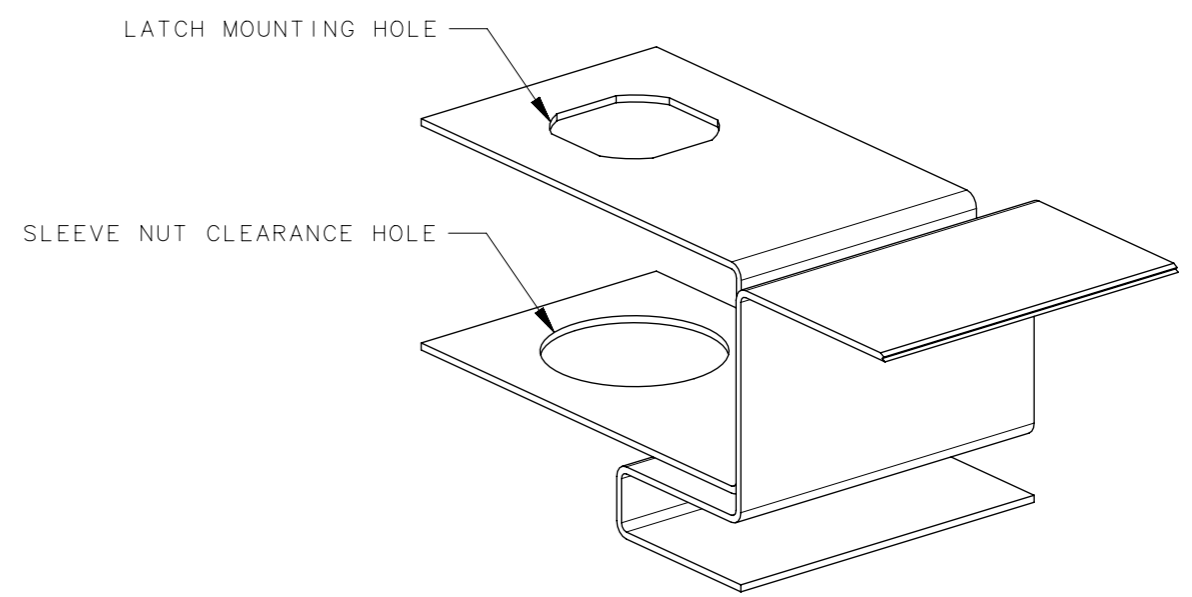
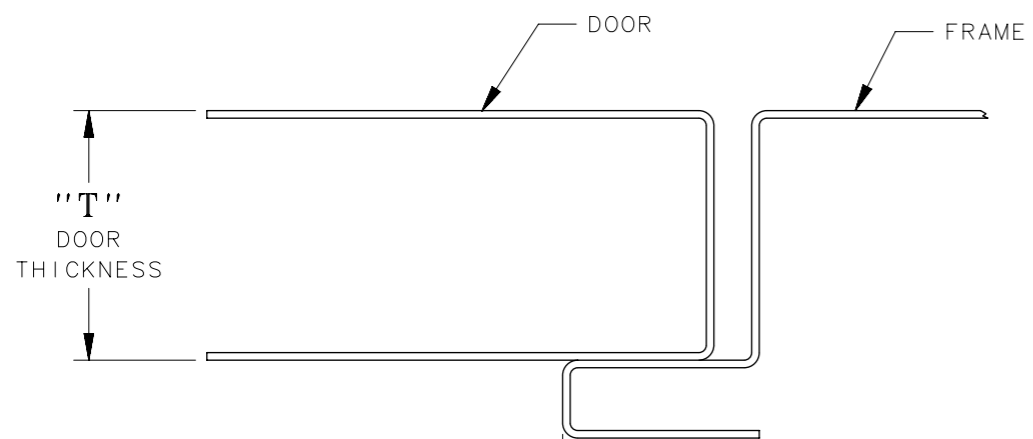
**IMPORTANT INSTALLATION INFORMATION**  
ADHERANCE TO THE RECOMMENDED DIMENSION IS CRITICAL TO THE PROPER FUNCTIONING OF THE E5 CAM LATCH.



| REVISION HISTORY |           |         |                 |
|------------------|-----------|---------|-----------------|
| REV              | DATE      | BY      | DESCRIPTION     |
| F                | 28AUG2024 | CRM/DMS | PRN: P2024-1442 |

## DOOR PREPARATION

### 18mm - 51mm DOOR THICKNESS



## DOOR PREPARATION

### 18mm - 51mm DOOR THICKNESS

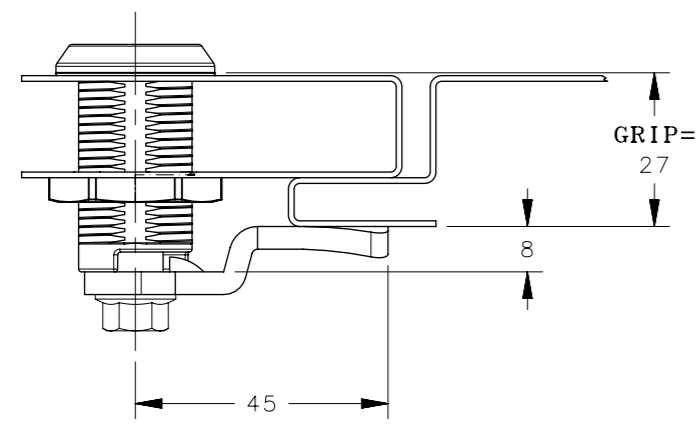
| D | (T) DOOR THICKNESS |
|---|--------------------|
| 1 | 1 - 18             |
| 2 | 1 - 18             |
| 3 | 18 - 33            |
| 4 | 18 - 33            |
| 5 | 33 - 51            |

**IMPORTANT INSTALLATION INFORMATION**

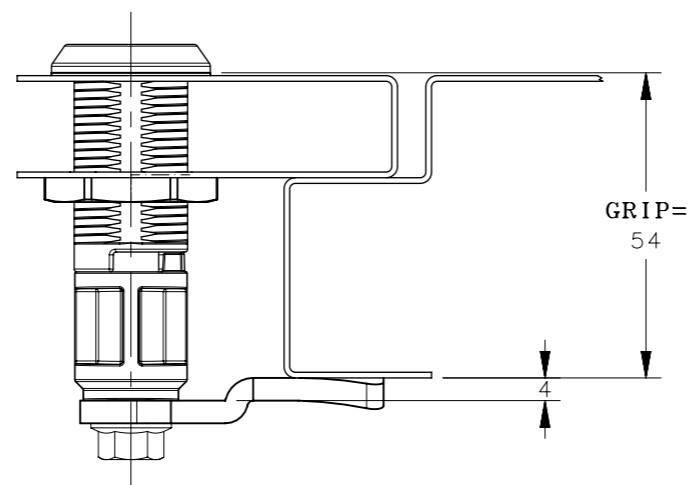
ADHERANCE TO THE RECOMMENDED DIMENSION IS CRITICAL TO THE PROPER FUNCTIONING OF THE E5 CAM LATCH.

|   |  |   |  |  |                    |
|---|--|---|--|--|--------------------|
| CPB NUMBER<br>2017-1147   |  | THIRD ANGLE PROJECTION                                    |  | <b>southco</b> <sup>®</sup><br>CONNECT • CREATE • INNOVATE |                    |
|   |  | MILLIMETERS [IN]  |  |  |                    |
|   |  | TOLERANCES UNLESS OTHERWISE NOTED                         |  | DESCRIPTION<br>E5 CAM LATCH ASSEMBLY<br>HVAC, SINGLE POINT |                    |
| PROPRIETARY ITEM<br><small>EXCEPT FOR USES EXPRESSLY GRANTED IN WRITING, INFORMATION DISCLOSED HEREON IS CONFIDENTIAL AND ALL RIGHTS, PATENT AND OTHERWISE, ARE RESERVED BY SOUTHCO, INC.</small> |  | ALL DIMENSIONS WITHOUT TOLERANCES ARE FOR REFERENCE ONLY. |  | SIZE<br>A3   | SYSTEM<br>NX       |
| PER ASME Y14.5M-2009  |  | DRAWN BY<br>MJS   |  | DATE<br>01JUL2019  | DWG NO.<br>J-E5-6A |
|   |  | SCALE<br>1:1  |  | SHEET<br>4 OF 8  |                    |

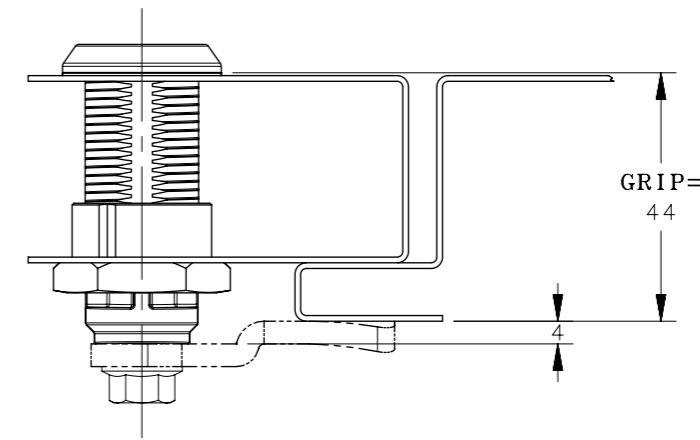
| REVISION HISTORY |           |         |                 |
|------------------|-----------|---------|-----------------|
| REV              | DATE      | BY      | DESCRIPTION     |
| F                | 28AUG2024 | CRM/DMS | PRN: P2024-1442 |



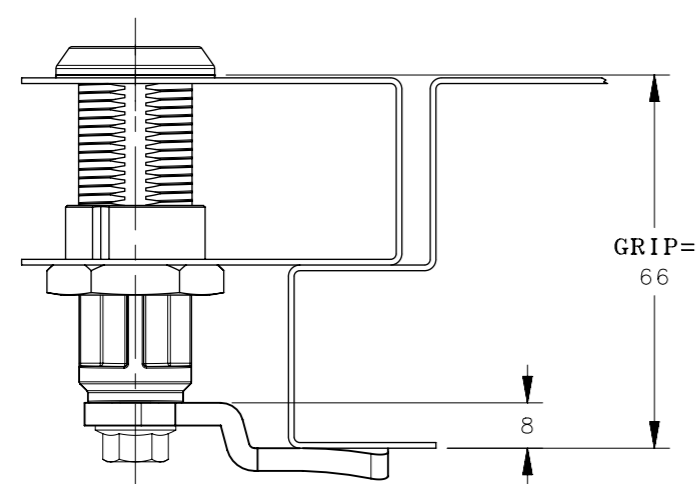
PART NUMBER: E5-6A-WWF-UU1  
CAM E5-6006 SHOWN



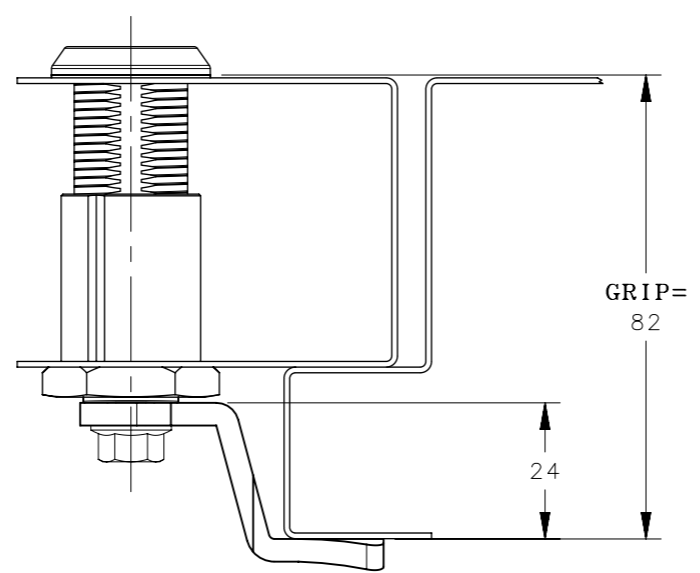
PART NUMBER: E5-6A-WWF-UU2  
CAM E5-6108 SHOWN



PART NUMBER: E5-6A-WWF-UU3  
CAM E5-6108 SHOWN



PART NUMBER: E5-6A-WWF-UU4  
CAM E5-6114 SHOWN



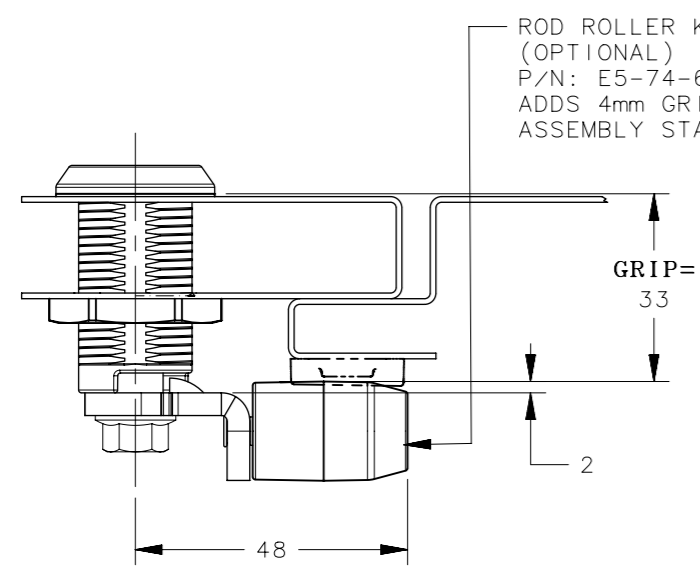
PART NUMBER: E5-6A-WWF-UU5  
CAM E5-6122 SHOWN

| CAM SELECTION TABLE - SOLD SEPARATELY |      |                      |      |                      |      |                      |      |                      |      |
|---------------------------------------|------|----------------------|------|----------------------|------|----------------------|------|----------------------|------|
| E5-6A-WWF-UU1                         |      | E5-6A-WWF-UU2        |      | E5-6A-WWF-UU3        |      | E5-6A-WWF-UU4        |      | E5-6A-WWF-UU5        |      |
| CAM PART NO. E5-60YY                  |      | CAM PART NO. E5-61YY |      | CAM PART NO. E5-61YY |      | CAM PART NO. E5-61YY |      | CAM PART NO. E5-61YY |      |
| YY                                    | GRIP | YY                   | GRIP | YY                   | GRIP | YY                   | GRIP | YY                   | GRIP |
| 28                                    | 5mm  | 08                   | 54mm | 28                   | 18mm | 14                   | 66mm | 25                   | 34mm |
| 27                                    | 7mm  | 09                   | 56mm | 27                   | 20mm | 15                   | 68mm | 24                   | 36mm |
| 26                                    | 9mm  | 10                   | 58mm | 26                   | 22mm | 16                   | 70mm | 23                   | 38mm |
| 25                                    | 11mm | 11                   | 60mm | 25                   | 24mm | 17                   | 72mm | 01                   | 40mm |
| 24                                    | 13mm | 12                   | 62mm | 24                   | 26mm | 18                   | 74mm | 02                   | 42mm |
| 23                                    | 15mm | 13                   | 64mm | 23                   | 28mm | 19                   | 76mm | 03                   | 44mm |
| 01                                    | 17mm | 14                   | 66mm | 01                   | 30mm | 20                   | 78mm | 04                   | 46mm |
| 02                                    | 19mm | 15                   | 68mm | 02                   | 32mm | 21                   | 80mm | 05                   | 48mm |
| 03                                    | 21mm | 16                   | 70mm | 03                   | 34mm | 22                   | 82mm | 06                   | 50mm |
| 04                                    | 23mm | 17                   | 72mm | 04                   | 36mm | -                    | -    | 07                   | 52mm |
| 05                                    | 25mm | 18                   | 74mm | 05                   | 38mm | -                    | -    | 08                   | 54mm |
| 06                                    | 27mm | 19                   | 76mm | 06                   | 40mm | -                    | -    | 09                   | 56mm |
| 07                                    | 29mm | 20                   | 78mm | 07                   | 42mm | -                    | -    | 10                   | 58mm |
| 08                                    | 31mm | 21                   | 80mm | 08                   | 44mm | -                    | -    | 11                   | 60mm |
| 09                                    | 33mm | 22                   | 82mm | 09                   | 46mm | -                    | -    | 12                   | 62mm |
| 10                                    | 35mm | -                    | -    | 10                   | 48mm | -                    | -    | 13                   | 64mm |
| 11                                    | 37mm | -                    | -    | 11                   | 50mm | -                    | -    | 14                   | 66mm |
| 12                                    | 39mm | -                    | -    | 12                   | 52mm | -                    | -    | 15                   | 68mm |
| 13                                    | 41mm | -                    | -    | 13                   | 54mm | -                    | -    | 16                   | 70mm |
| 14                                    | 43mm | -                    | -    | 14                   | 56mm | -                    | -    | 17                   | 72mm |
| 15                                    | 45mm | -                    | -    | 15                   | 58mm | -                    | -    | 18                   | 74mm |
| 16                                    | 47mm | -                    | -    | 16                   | 60mm | -                    | -    | 19                   | 76mm |
| 17                                    | 49mm | -                    | -    | 17                   | 62mm | -                    | -    | 20                   | 78mm |
| 18                                    | 51mm | -                    | -    | 18                   | 64mm | -                    | -    | 21                   | 80mm |
| 19                                    | 53mm | -                    | -    | 19                   | 66mm | -                    | -    | 22                   | 82mm |

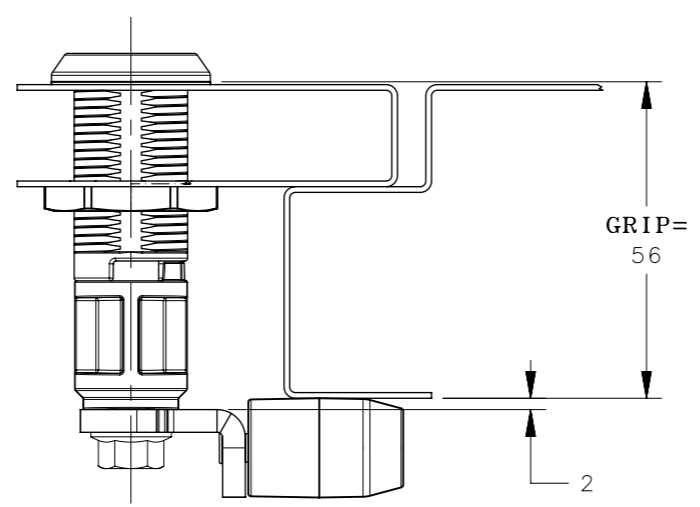
|  |   |  |
|--|---|--|
| CPB NUMBER<br>2017-1147  | THIRD ANGLE PROJECTION                                    |  |
| SURFACE AREA<br>mm <sup>2</sup>  | MILLIMETERS [IN]  |  |
| VOLUME<br>mm <sup>3</sup>  | TOLERANCES UNLESS OTHERWISE NOTED                         | DESCRIPTION<br>CAM LATCH<br>FLAT CAM OPTIONS       |
| PROPRIETARY ITEM<br>EXCEPT FOR USES EXPRESSLY GRANTED IN WRITING, INFORMATION DISCLOSED HEREON IS CONFIDENTIAL AND ALL RIGHTS, PATENT AND OTHERWISE, ARE RESERVED BY SOUTHCO, INC. | ALL DIMENSIONS WITHOUT TOLERANCES ARE FOR REFERENCE ONLY. | SIZE A3 SYSTEM NX DWG NO. J-E5-6A                  |
|  | PER ASME Y14.5M-2009                                      | DRAWN BY MJS DATE 01JUL2019 SCALE 1:1 SHEET 5 OF 8 |

**ADDITIONAL FLAT CAM INFORMATION**  
PLEASE REFER TO SOUTHCO TRADE DRAWINGS J-E5-60-A, J-E5-60-B, J-E5-61-A AND J-E5-61-B.

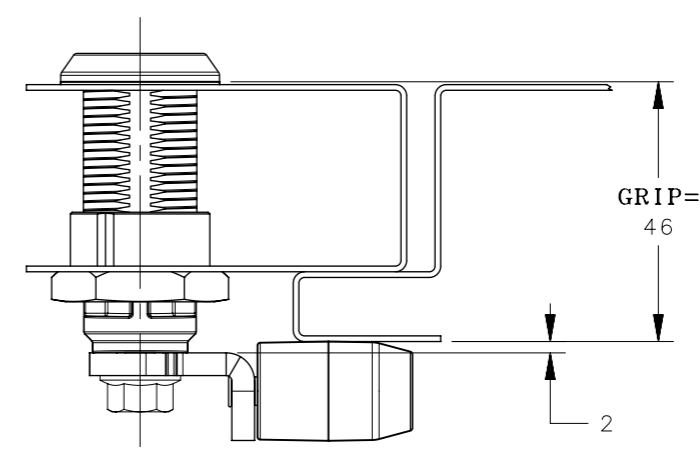
| REVISION HISTORY |           |         |                 |
|------------------|-----------|---------|-----------------|
| REV              | DATE      | BY      | DESCRIPTION     |
| F                | 28AUG2024 | CRM/DMS | PRN: P2024-1442 |



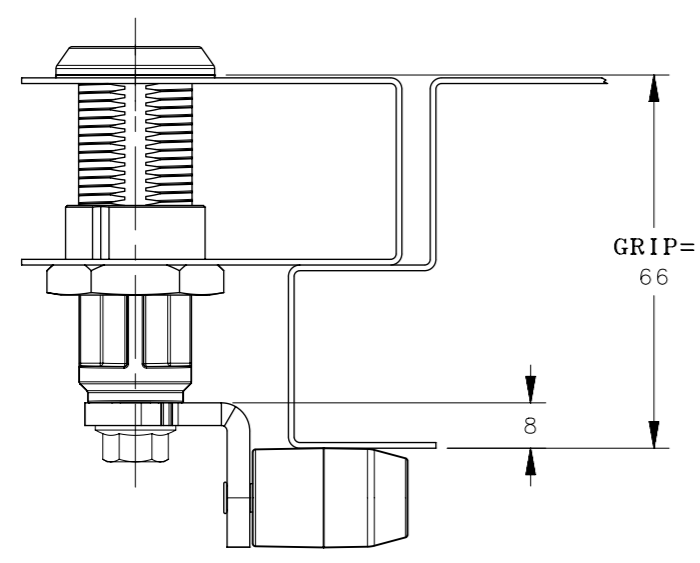
PART NUMBER: E5-6A-WWF-UU1  
ROLLER CAM E5-7009 SHOWN



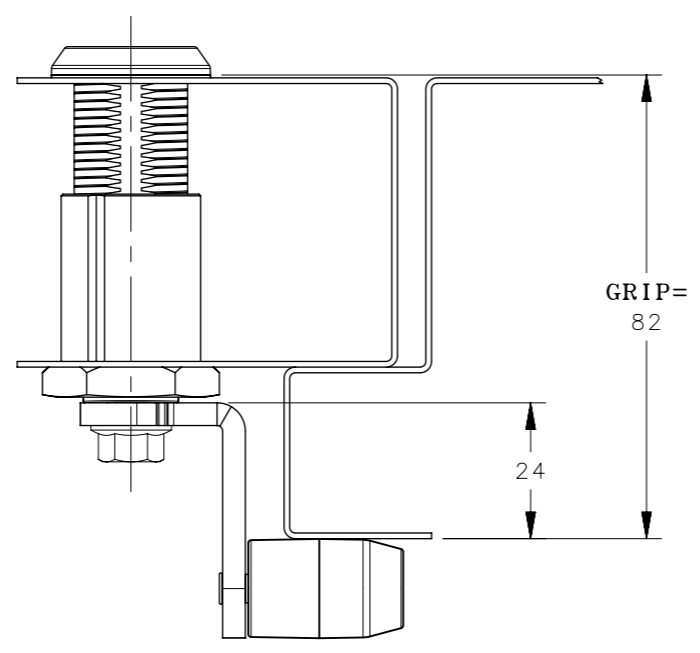
PART NUMBER: E5-6A-WWF-UU2  
ROLLER CAM E5-7109 SHOWN



PART NUMBER: E5-6A-WWF-UU3  
ROLLER CAM E5-7109 SHOWN



PART NUMBER: E5-6A-WWF-UU4  
ROLLER CAM E5-7114 SHOWN



PART NUMBER: E5-6A-WWF-UU5  
ROLLER CAM E5-7122 SHOWN

| ROLLER CAM SELECTION TABLE - SOLD SEPARATELY |      |                      |      |                      |      |                      |      |                      |      |
|--|------|----------------------|------|----------------------|------|----------------------|------|----------------------|------|
| E5-6A-WWF-UU1                                |      | E5-6A-WWF-UU2        |      | E5-6A-WWF-UU3        |      | E5-6A-WWF-UU4        |      | E5-6A-WWF-UU5        |      |
| CAM PART NO. E5-70YY                         |      | CAM PART NO. E5-71YY |      | CAM PART NO. E5-71YY |      | CAM PART NO. E5-71YY |      | CAM PART NO. E5-71YY |      |
| YY   | GRIP | YY                   | GRIP | YY                   | GRIP | YY                   | GRIP | YY                   | GRIP |
| -  | 5mm  | -                    | 54mm | 18                   | 18mm | 14                   | 66mm | 15                   | 34mm |
| -  | 7mm  | 09                   | 56mm | 17                   | 20mm | 15                   | 68mm | 14                   | 36mm |
| -  | 9mm  | 10                   | 58mm | 16                   | 22mm | 16                   | 70mm | 13                   | 38mm |
| -  | 11mm | 11                   | 60mm | 15                   | 24mm | 17                   | 72mm | 12                   | 40mm |
| -  | 13mm | 12                   | 62mm | 14                   | 26mm | 18                   | 74mm | 11                   | 42mm |
| -  | 15mm | 13                   | 64mm | 13                   | 28mm | 19                   | 76mm | 10                   | 44mm |
| -  | 17mm | 14                   | 66mm | 12                   | 30mm | 20                   | 78mm | 09                   | 46mm |
| -  | 19mm | 15                   | 68mm | 11                   | 32mm | 21                   | 80mm | -                    | 48mm |
| -  | 21mm | 16                   | 70mm | 10                   | 34mm | 22                   | 82mm | -                    | 50mm |
| -  | 23mm | 17                   | 72mm | 09                   | 36mm | -                    | -    | -                    | 52mm |
| -  | 25mm | 18                   | 74mm | -                    | 38mm | -                    | -    | -                    | 54mm |
| -  | 27mm | 19                   | 76mm | -                    | 40mm | -                    | -    | 09                   | 56mm |
| -  | 29mm | 20                   | 78mm | -                    | 42mm | -                    | -    | 10                   | 58mm |
| -  | 31mm | 21                   | 80mm | -                    | 44mm | -                    | -    | 11                   | 60mm |
| 09   | 33mm | 22                   | 82mm | 09                   | 46mm | -                    | -    | 12                   | 62mm |
| 10   | 35mm | -                    | -    | 10                   | 48mm | -                    | -    | 13                   | 64mm |
| 11   | 37mm | -                    | -    | 11                   | 50mm | -                    | -    | 14                   | 66mm |
| 12   | 39mm | -                    | -    | 12                   | 52mm | -                    | -    | 15                   | 68mm |
| 13   | 41mm | -                    | -    | 13                   | 54mm | -                    | -    | 16                   | 70mm |
| 14   | 43mm | -                    | -    | 14                   | 56mm | -                    | -    | 17                   | 72mm |
| 15   | 45mm | -                    | -    | 15                   | 58mm | -                    | -    | 18                   | 74mm |
| 16   | 47mm | -                    | -    | 16                   | 60mm | -                    | -    | 19                   | 76mm |
| 17   | 49mm | -                    | -    | 17                   | 62mm | -                    | -    | 20                   | 78mm |
| 18   | 51mm | -                    | -    | 18                   | 64mm | -                    | -    | 21                   | 80mm |
| 19   | 53mm | -                    | -    | 19                   | 66mm | -                    | -    | 22                   | 82mm |

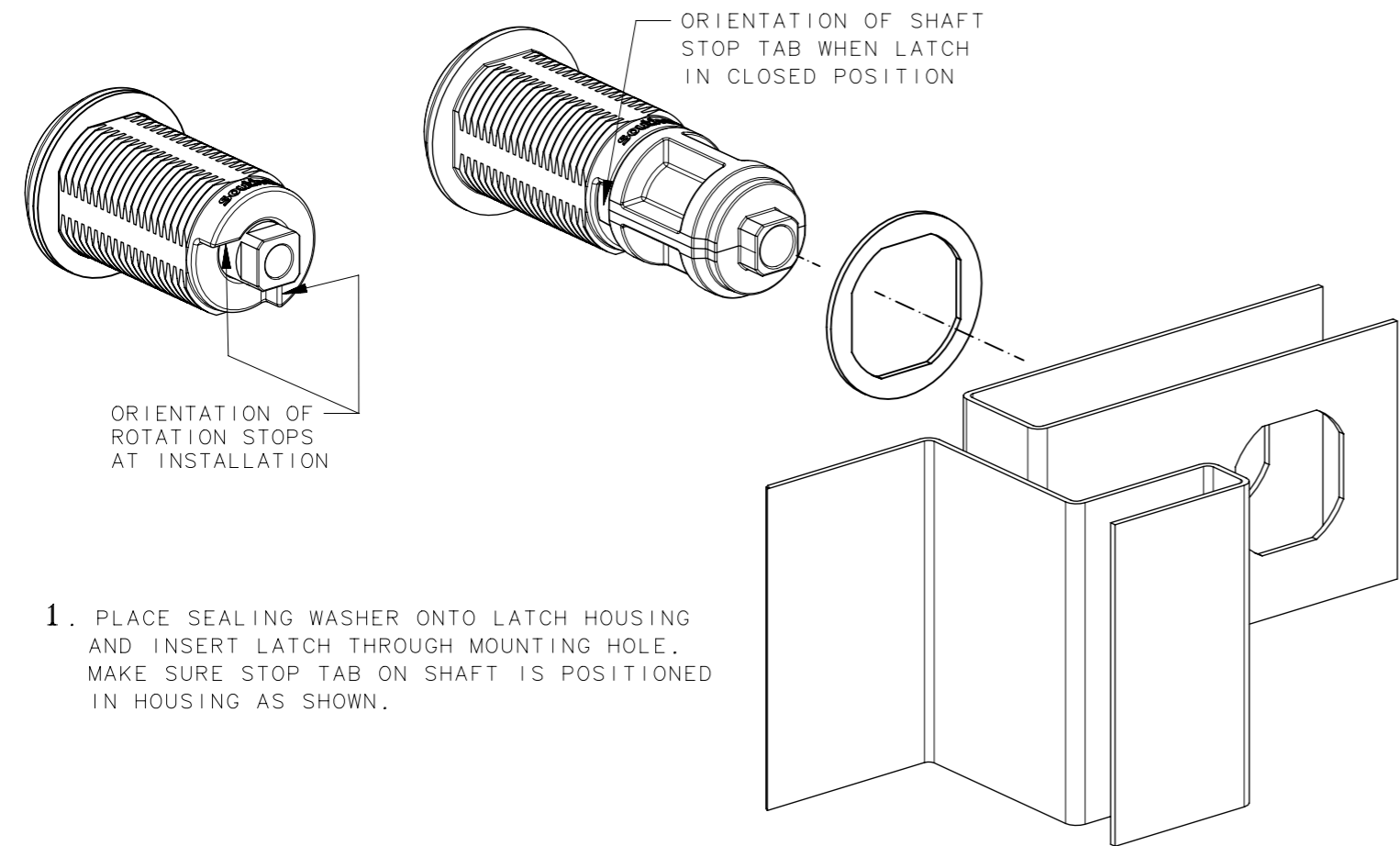
|  |   |  |
|--|---|--|
| CPB NUMBER<br>2017-1147  | THIRD ANGLE PROJECTION  | <b>southco</b> <sup>®</sup><br>CONNECT • CREATE • INNOVATE |
|  | MILLIMETERS [IN]  |  |
|  | TOLERANCES UNLESS OTHERWISE NOTED                               | DESCRIPTION<br>CAM LATCH<br>ROLLER CAM OPTIONS             |
| PROPRIETARY ITEM<br>EXCEPT FOR USES EXPRESSLY GRANTED<br>IN WRITING, INFORMATION DISCLOSED<br>HEREON IS CONFIDENTIAL AND ALL<br>RIGHTS, PATENT AND OTHERWISE,<br>ARE RESERVED BY SOUTHCO, INC. | ALL DIMENSIONS WITHOUT<br>TOLERANCES ARE FOR<br>REFERENCE ONLY. | SIZE A3 SYSTEM NX DWG NO. J-E5-6A                          |
|  | PER ASME Y14.5M-2009  | DRAWN BY MJS DATE 01JUL2019 SCALE 1:1 SHEET 6 OF 8         |

**ADDITIONAL ROLLER CAM INFORMATION**  
PLEASE REFER TO SOUTHCO TRADE DRAWINGS  
J-E5-70 AND J-E5-71.

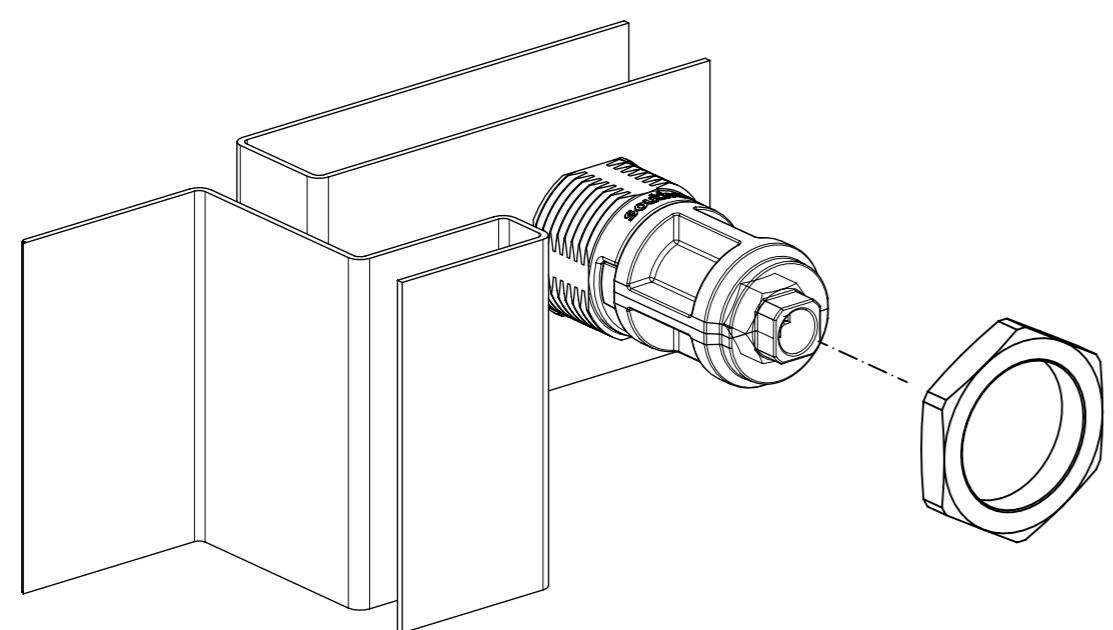
| REVISION HISTORY |           |         |                 |
|------------------|-----------|---------|-----------------|
| REV              | DATE      | BY      | DESCRIPTION     |
| F                | 28AUG2024 | CRM/DMS | PRN: P2024-1442 |

## CAM LATCH ASSEMBLY INSTALLATION

### 1mm - 18mm DOOR THICKNESS

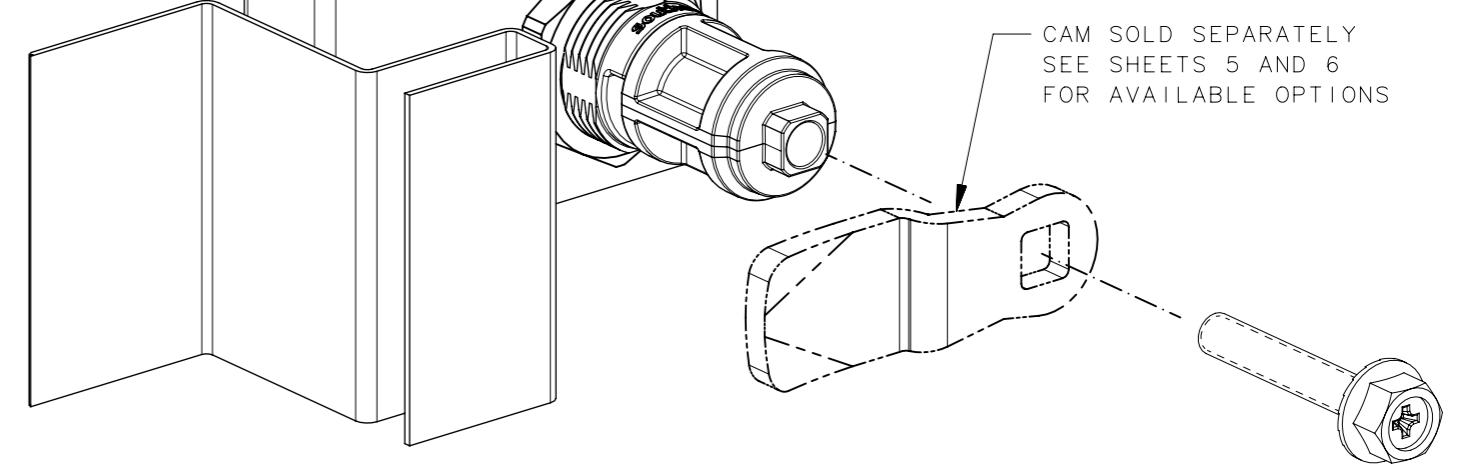
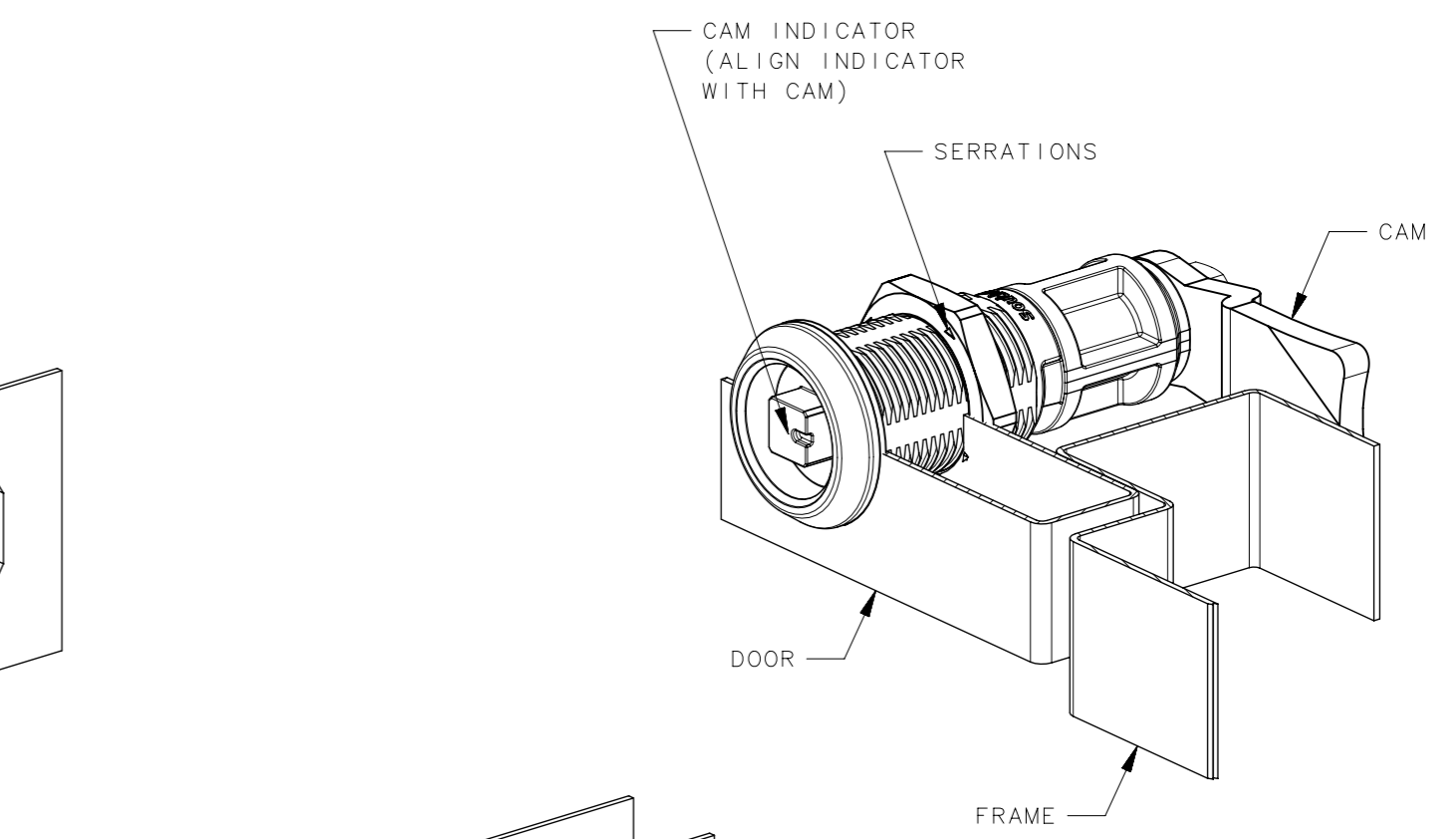


1. PLACE SEALING WASHER ONTO LATCH HOUSING AND INSERT LATCH THROUGH MOUNTING HOLE. MAKE SURE STOP TAB ON SHAFT IS POSITIONED IN HOUSING AS SHOWN.



2. THREAD HEX NUT ONTO HOUSING TO SECURE LATCH ASSEMBLY TO PANEL. TIGHTEN TO 10 N-m MAX.

NOTE: LATCHES USING ROLLER CAMS LISTED ON SHEET 6 USE THE SAME INSTALLATION METHOD.



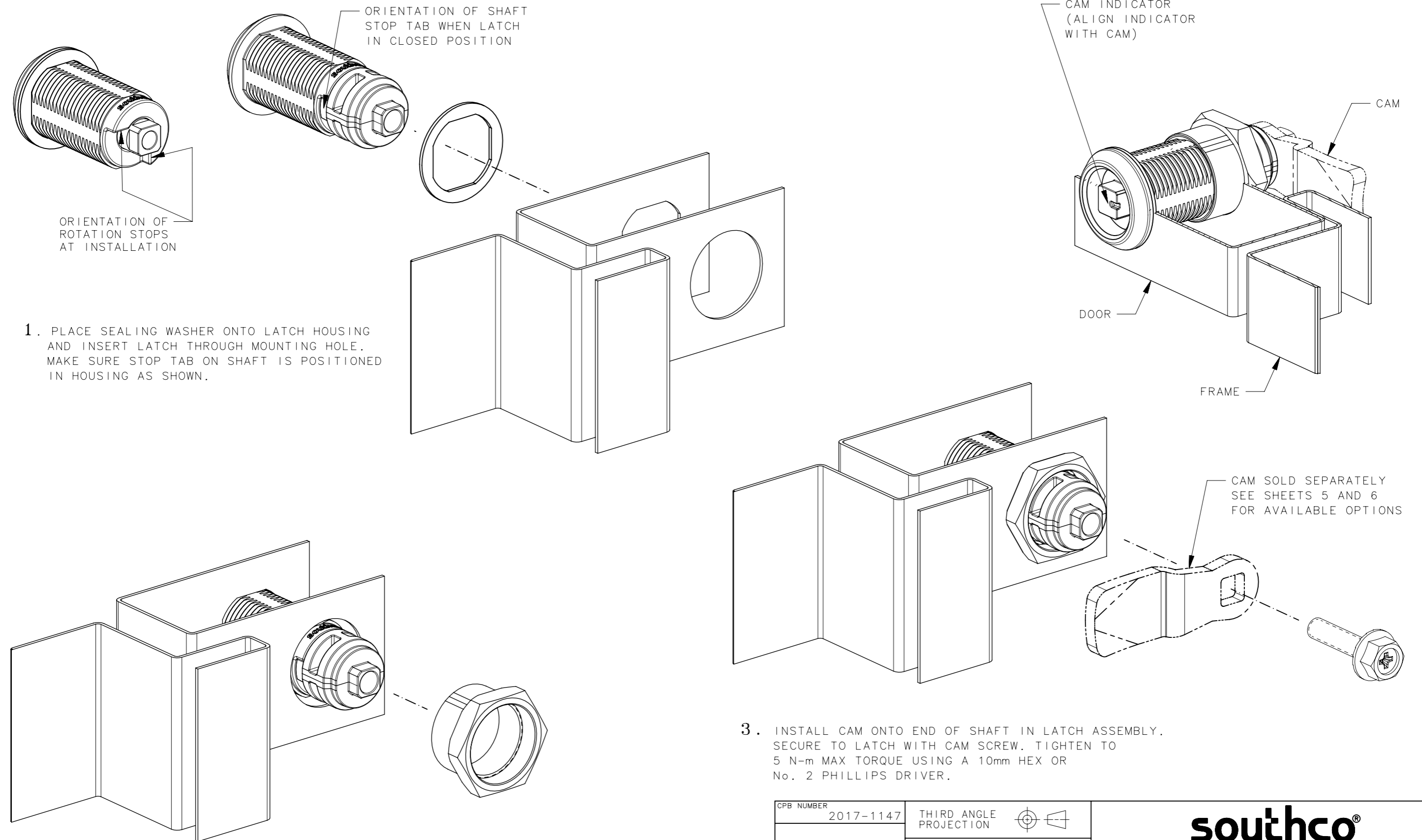
3. INSTALL CAM ONTO END OF SHAFT IN LATCH ASSEMBLY. SECURE TO LATCH WITH CAM SCREW. TIGHTEN TO 5 N-m MAX TORQUE USING A 10mm HEX OR No. 2 PHILLIPS DRIVER.

|   |   |  |                   |
|---|---|--|-------------------|
| CPB NUMBER<br>2017-1147   | THIRD ANGLE PROJECTION                                    | <b>southco</b> <sup>®</sup><br>CONNECT • CREATE • INNOVATE |                   |
|   | MILLIMETERS [IN]  |  |                   |
|   | TOLERANCES UNLESS OTHERWISE NOTED                         | DESCRIPTION<br>CAM LATCH LATCH AND CAM INSTALLATION        |                   |
|   | ALL DIMENSIONS WITHOUT TOLERANCES ARE FOR REFERENCE ONLY. | SIZE<br>A3   | SYSTEM<br>NX      |
| PROPRIETARY ITEM<br><small>EXCEPT FOR USES EXPRESSLY GRANTED IN WRITING, INFORMATION DISCLOSED HEREON IS CONFIDENTIAL AND ALL RIGHTS, PATENT AND OTHERWISE, ARE RESERVED BY SOUTHCO, INC.</small> | PER ASME Y14.5M-2009                                      | DWG NO.<br>J-E5-6A   |                   |
|   |   | DRAWN BY<br>MJS  | DATE<br>01JUL2019 |
|   |   | SCALE<br>1:1   | SHEET<br>7 OF 8   |

| REVISION HISTORY |           |         |                 |
|------------------|-----------|---------|-----------------|
| REV              | DATE      | BY      | DESCRIPTION     |
| F                | 28AUG2024 | CRM/DMS | PRN: P2024-1442 |

## CAM LATCH ASSEMBLY INSTALLATION

### 18mm - 51mm DOOR THICKNESS



1. PLACE SEALING WASHER ONTO LATCH HOUSING AND INSERT LATCH THROUGH MOUNTING HOLE. MAKE SURE STOP TAB ON SHAFT IS POSITIONED IN HOUSING AS SHOWN.

2. THREAD HEX NUT ONTO HOUSING TO SECURE LATCH ASSEMBLY TO PANEL. TIGHTEN TO 10 N-m MAX.

NOTE: LATCHES USING ROLLER CAMS LISTED ON SHEET 6 USE THE SAME INSTALLATION METHOD.

3. INSTALL CAM ONTO END OF SHAFT IN LATCH ASSEMBLY. SECURE TO LATCH WITH CAM SCREW. TIGHTEN TO 5 N-m MAX TORQUE USING A 10mm HEX OR No. 2 PHILLIPS DRIVER.

|   |   |  |                   |
|---|---|--|-------------------|
| CPB NUMBER<br>2017-1147   | THIRD ANGLE PROJECTION                                    | <b>southco</b> <sup>®</sup><br>CONNECT • CREATE • INNOVATE |                   |
|   | MILLIMETERS [IN]  |  |                   |
|   | TOLERANCES UNLESS OTHERWISE NOTED                         | DESCRIPTION<br>CAM LATCH<br>LATCH AND CAM INSTALLATION     |                   |
|   | ALL DIMENSIONS WITHOUT TOLERANCES ARE FOR REFERENCE ONLY. | SIZE<br>A3   | SYSTEM<br>NX      |
| PROPRIETARY ITEM<br><small>EXCEPT FOR USES EXPRESSLY GRANTED IN WRITING, INFORMATION DISCLOSED HEREON IS CONFIDENTIAL AND ALL RIGHTS, PATENT AND OTHERWISE, ARE RESERVED BY SOUTHCO, INC.</small> | PER ASME Y14.5M-2009                                      | DWG NO.<br>J-E5-6A   | SCALE<br>1:1      |
|   |   | DRAWN BY<br>MJS  | DATE<br>01JUL2019 |
|   |   |  | SHEET<br>8 OF 8   |