

REVISION HISTORY			
REV	DATE	BY	DESCRIPTION
G	01APR2024	PBJ/VK	PRN: P2024-0589

PART NUMBER: E5-9-WWX-YY1-RK

OMITTED
WHEN WW-70, 73, 100 OR 101

ACTUATION STYLE
(SEE BELOW)

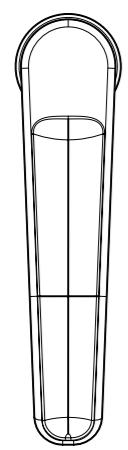
MATERIAL AND FINISH
2 = DIE CAST ZINC,
BRIGHT CHROME PLATE
5 = DIE CAST ZINC,
BLACK POWDER COATED

KEY OPTIONS:
0 = NO KEYS INCLUDED, ORDER SEPARATELY
3 = 1 KEY PER LATCH (PLASTIC OVERMOLDED)

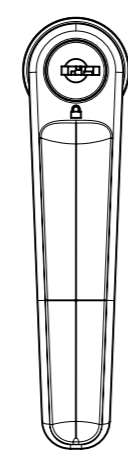
KEY REMOVAL:
1 = LOCKED/UNLOCKED POSITION

CAM
STYLE
(SEE BELOW)

WW ACTUATIONS STYLES



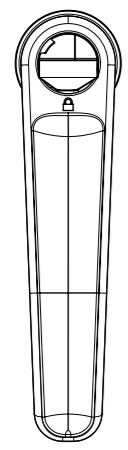
WW = 70
NON-LOCKING



WW = 71
KEY LOCKING
CH751 KEY CODE



WW = 72
STAINLESS STEEL
SCALP AND SHUTTER,
KEY LOCKING,
REVERSIBLE
KEY CODE R001



WW = 73
KEY LOCKING,
LOCK CORE
ORDERED SEPARATELY



WW = 100
TOOL LOCKING,
SLOTTED



WW = 101
TOOL LOCKING,
8mm HEX

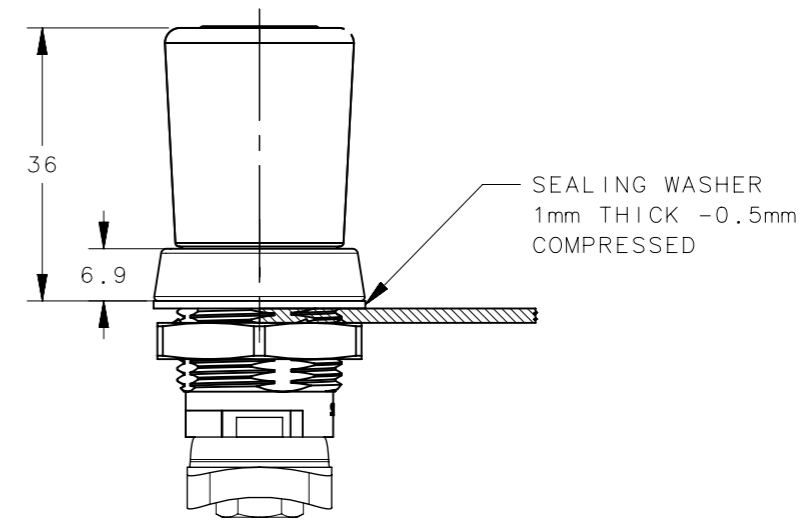
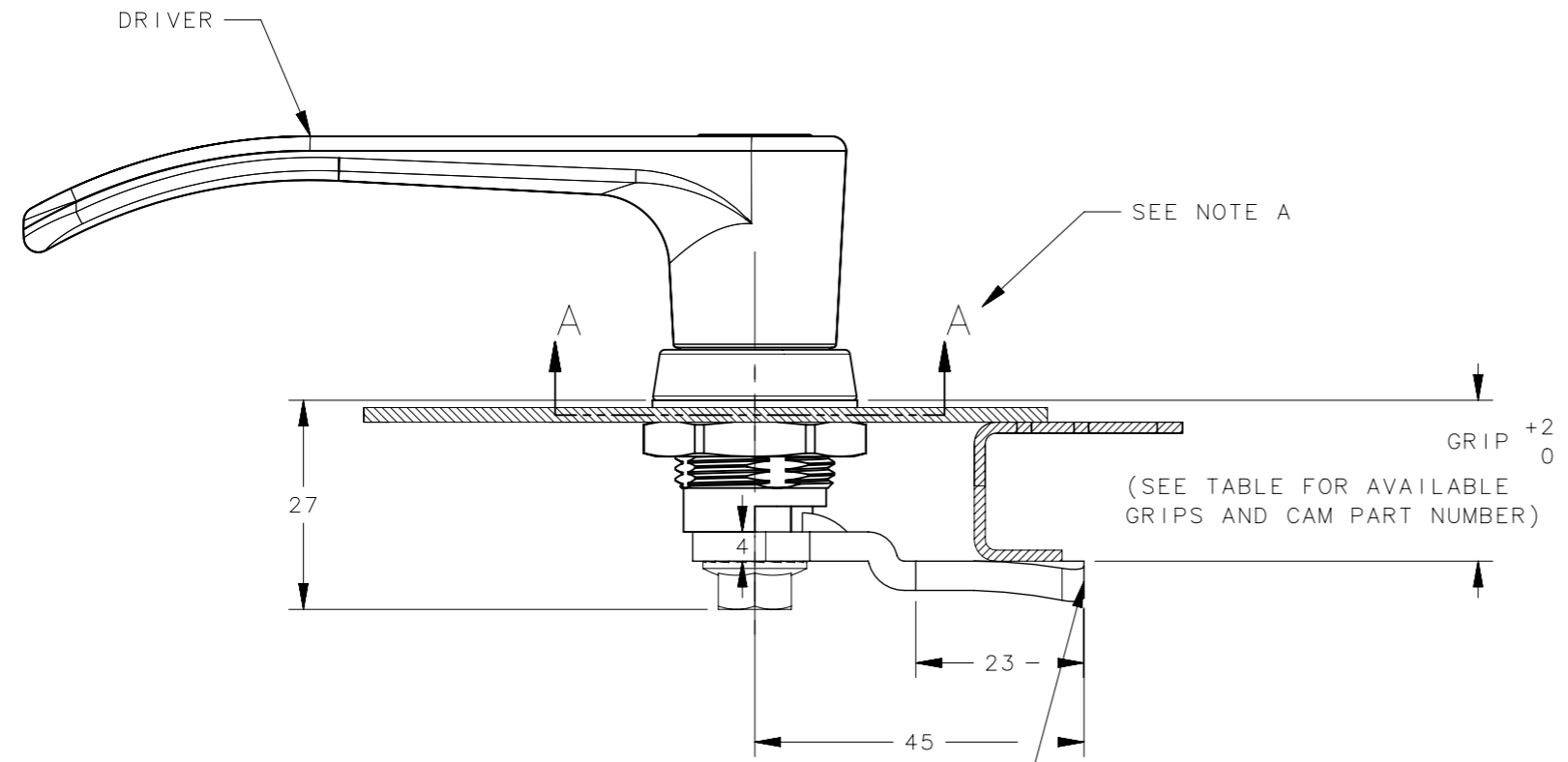
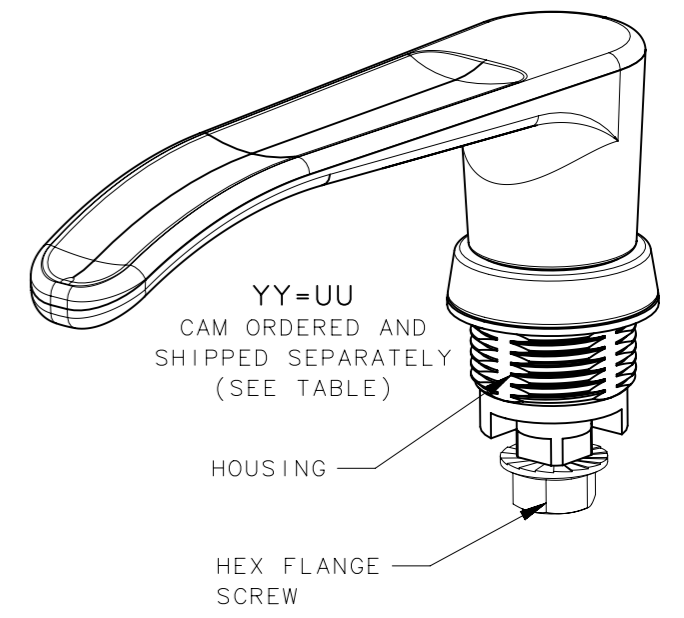
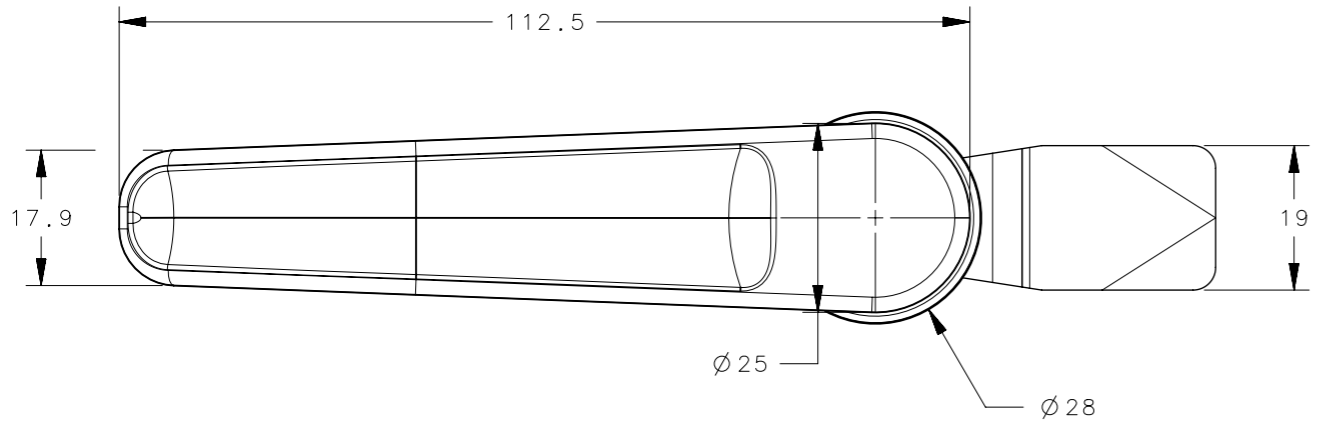
NOTES:

- A. DRIVER AND HOUSING ARE POWDER COATED BLACK ABOVE SECTION A-A (2 THREADS MAX. ON HOUSING.)
- B. "UU" CAM TYPE INDICATES THAT THE CAM IS ORDERED AND SHIPPED SEPARATELY.
- C. FOR CAM PART NUMBER SEE GRIP TABLE.
- D. FOR KEY INFORMATION REFER TO J-PK-10-01 (PLASTIC OVERMOLDED).
- E. COSMETIC SPECIFICATION:
ALL SURFACES ABOVE A-A, CONFORM TO A CLASS "B" DESIGNATION AS DESCRIBED IN SOUTHCO COSMETIC SPECIFICATION:
S-121-01 FOR X=2
S-121-03 FOR X=5

CPB NUMBER 2024-0229	THIRD ANGLE PROJECTION	southco [®] CONNECT • CREATE • INNOVATE	
	MILLIMETERS [IN]		
SURFACE AREA	TOLERANCES UNLESS OTHERWISE NOTED	DESCRIPTION E5 QUAD LATCH, (L-HANDLE) M22 X 24.9 HOUSING	
VOLUME	ALL DIMENSIONS WITHOUT TOLERANCES ARE FOR REFERENCE ONLY.	SIZE A3	SYSTEM NX
PROPRIETARY ITEM <small>EXCEPT FOR USES EXPRESSLY GRANTED IN WRITING, INFORMATION DISCLOSED HEREON IS CONFIDENTIAL AND ALL RIGHTS, PATENT AND OTHERWISE, ARE RESERVED BY SOUTHCO, INC.</small>	PER ASME Y14.5M-2009	DWG NO. J-E5-9-7	DATE 22NOV2006
		DRAWN BY MDY	SCALE 1:2
			SHEET 1 OF 5

YY CAM STYLE

REVISION HISTORY			
REV	DATE	BY	DESCRIPTION
G	01APR2024	PBJ/VK	PRN: P2024-0589



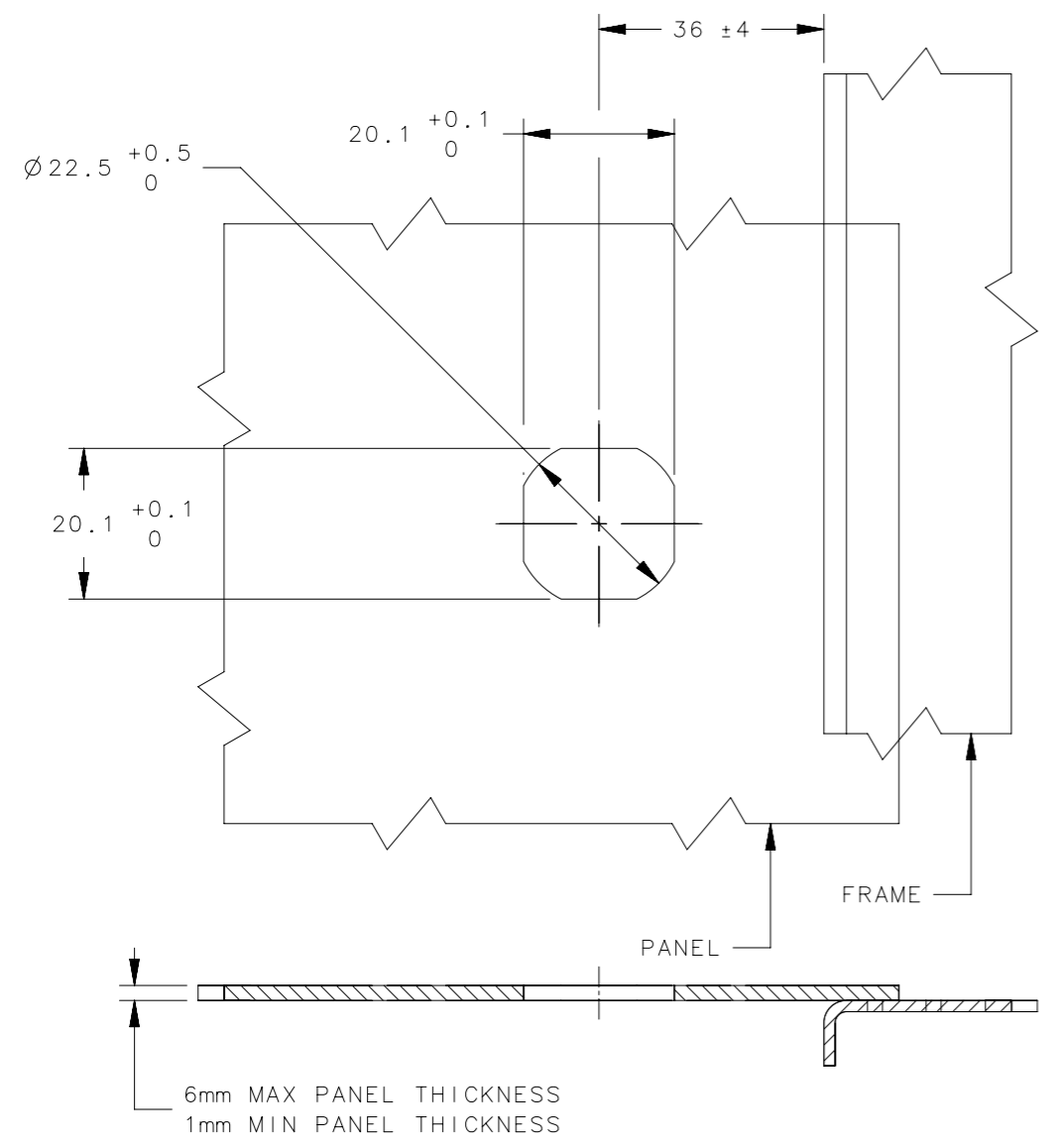
CAM PART NUMBER
E5-60YY

YY	GRIP	YY	GRIP
03	4mm	13	24mm
04	6mm	14	26mm
05	8mm	15	28mm
06	10mm	16	30mm
07	12mm	17	32mm
08	14mm	18	34mm
09	16mm	19	36mm
10	18mm	20	38mm
11	20mm	21	40mm
12	22mm	22	42mm

CPB NUMBER 2024-0229	THIRD ANGLE PROJECTION		
	MILLIMETERS [IN]		
SURFACE AREA	TOLERANCES UNLESS OTHERWISE NOTED	DESCRIPTION E5 QUAD LATCH, (L-HANDLE) M22 X 24.9 HOUSING	
VOLUME	ALL DIMENSIONS WITHOUT TOLERANCES ARE FOR REFERENCE ONLY.	SIZE A3	SYSTEM NX
PROPRIETARY ITEM EXCEPT FOR USES EXPRESSLY GRANTED IN WRITING, INFORMATION DISCLOSED HEREON IS CONFIDENTIAL AND ALL RIGHTS, PATENT AND OTHERWISE, ARE RESERVED BY SOUTHCO, INC.	PER ASME Y14.5M-2009	DWG NO. J-E5-9-7	DATE 22NOV2006
		DRAWN BY MDY	SCALE 1:1
			SHEET 2 OF 5

REVISION HISTORY			
REV	DATE	BY	DESCRIPTION
G	01APR2024	PBJ/VK	PRN: P2024-0589

PANEL PREPARATION



LOCK CAM	STEEL	ZINC PLATE	KEY LOCKING ASSEMBLY ONLY (WW=71,WW=72,WW=73,WW=100 AND WW=101)
LOCK EXTENDER	DIE CAST ZINC	TRIVALENT CHROMATE	KEY LOCKING ASSEMBLY ONLY (WW=71,WW=72,WW=73,WW=100 AND WW=101)
SHIPPING PLUG	POLYURETHANE	BLACK	KEY LOCKING, NO LOCK CORE (WW=73), ASSEMBLY ONLY
LOCK CORE	DIE CAST ZINC	BLACK POWDRE COAT	KEY LOCKING WITH LOCK CORE ASSEMBLY ONLY (WW=71,WW=72,WW=100 AND WW=101)
MOUNTING NUT	DIE CAST ZINC	ZINE PLATE, BRIGHT CHROMATE	-
HEX FLANGE SCREW	LOW CARBON STEEL	ZINE PLATE, BRIGHT CHROMATE	-
SEALING WASHER	POLYURETHANE	BLACK	-
O-RINGS	NITRILE	BLACK	-
CAM	STEEL	ZINE PLATE, BRIGHT CHROMATE	
HOUSING	DIE CAST ZINC	BLACK POWDRE COAT	X=5 (SEE NOTE A)
		CHROME PLATED	X=2
DRIVER	DIE CAST ZINC	BLACK POWDRE COAT	X=5 (SEE NOTE A)
		CHROME PLATED	X=2
TYPE OF COMPONENT	MATERIAL	FINISH	REMARKS

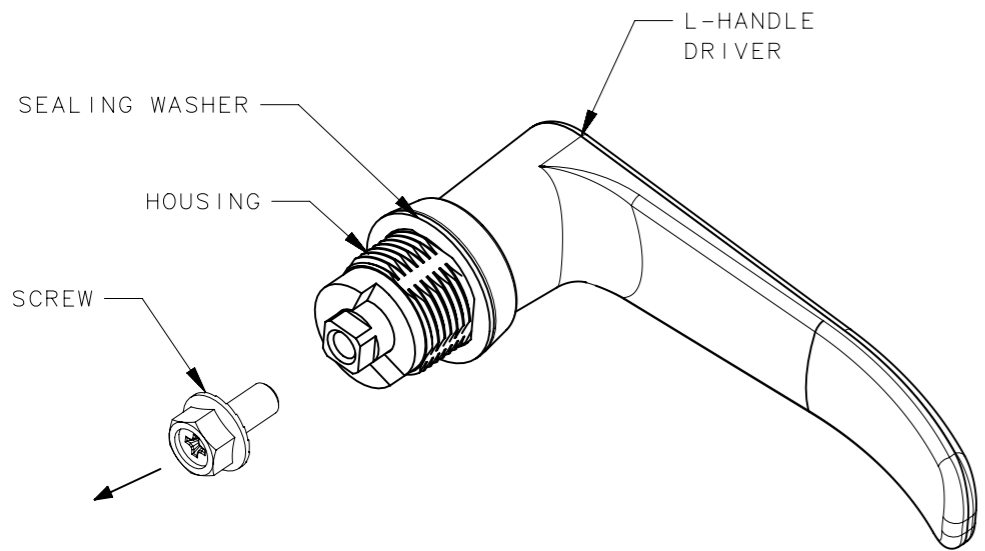
CPB NUMBER 2024-0229	THIRD ANGLE PROJECTION	 CONNECT · CREATE · INNOVATE	
	MILLIMETERS [IN]		
SURFACE AREA	TOLERANCES UNLESS OTHERWISE NOTED	DESCRIPTION E5 QUAD LATCH, (L-HANDLE) M22 X 24.9 HOUSING	
VOLUME	ALL DIMENSIONS WITHOUT TOLERANCES ARE FOR REFERENCE ONLY.	SIZE A3	SYSTEM NX
PROPRIETARY ITEM <small>EXCEPT FOR USES EXPRESSLY GRANTED IN WRITING, INFORMATION DISCLOSED HEREON IS CONFIDENTIAL AND ALL RIGHTS, PATENT AND OTHERWISE, ARE RESERVED BY SOUTHCO, INC.</small>	PER ASME Y14.5M-2009	DWG NO. J-E5-9-7	
		DRAWN BY MDY	DATE 22NOV2006
		SCALE 1:1	SHEET 3 OF 5

REVISION HISTORY			
REV	DATE	BY	DESCRIPTION
G	01APR2024	PBJ/VK	PRN: P2024-0589

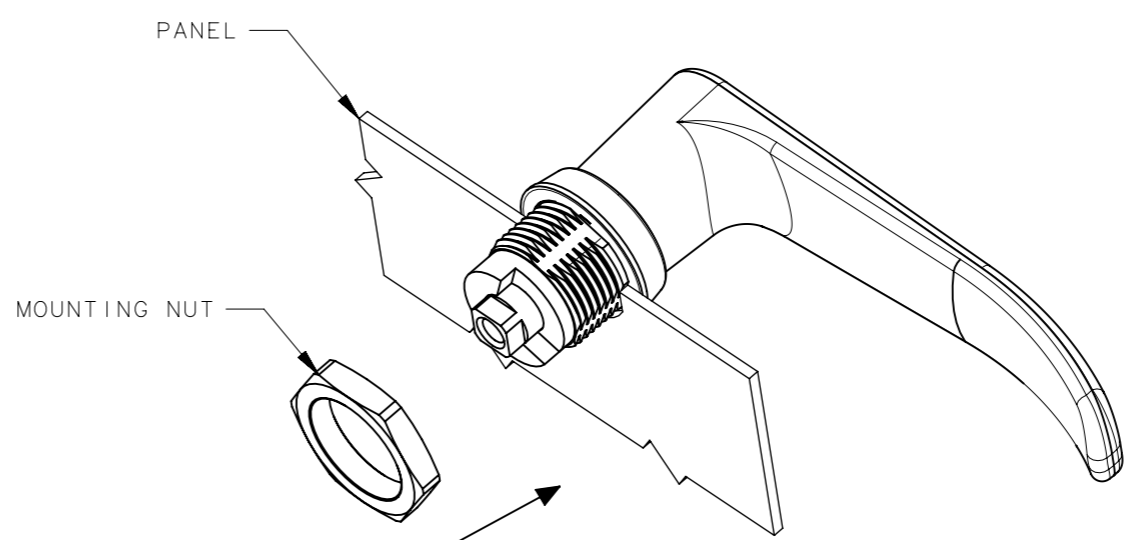
LATCH NSTALLATION INTO PANEL

INSTALLATION METHOD:

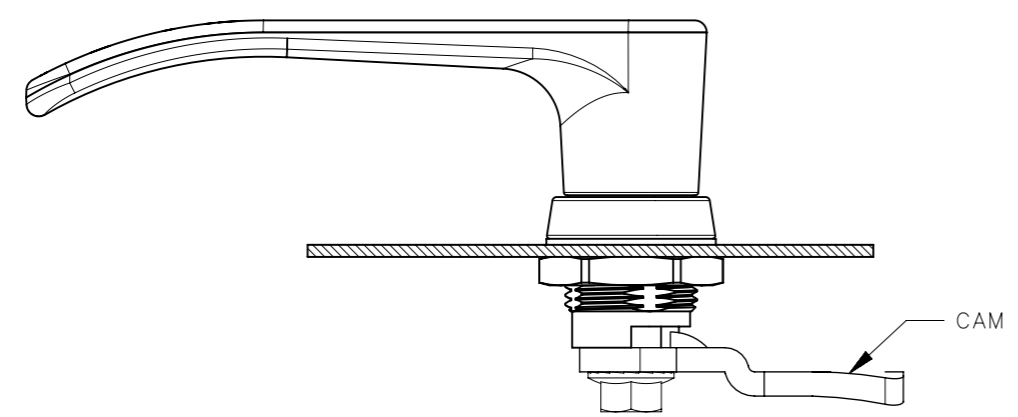
- 1.REMOVE SCREW FROM HOUSING.
- 2.PLACE SEALING WASHER ONTO LATCH HOUSING AND PLACE THROUGH MOUTING HOLE.




- 3.INSATLL MOUNTING NUT AND TIGHTEN TO 10 N-m MAX.



- 4.ATTACH CAM TO LATCH ASSEMBLY. ENSURE THAT CAM IS ORIENTED IN DESIRED POSITION.
- 5.INSTALL SCREW. TIGHTEN TO 5 N-m USING 10mm HEX OR No. 2 PHILLIPS DRIVER.



CPB NUMBER 2024-0229	THIRD ANGLE PROJECTION	 CONNECT • CREATE • INNOVATE		
	MILLIMETERS [IN]			
SURFACE AREA	TOLERANCES UNLESS OTHERWISE NOTED	DESCRIPTION E5 QUAD LATCH, (L-HANDLE) M22 X 24.9 HOUSING		
VOLUME	ALL DIMENSIONS WITHOUT TOLERANCES ARE FOR REFERENCE ONLY.	SIZE A3	SYSTEM NX	DWG NO. J-E5-9-7
PROPRIETARY ITEM <small>EXCEPT FOR USES EXPRESSLY GRANTED IN WRITING, INFORMATION DISCLOSED HEREON IS CONFIDENTIAL AND ALL RIGHTS, PATENT AND OTHERWISE, ARE RESERVED BY SOUTHCO, INC.</small>	PER ASME Y14.5M-2009	DRAWN BY MDY	DATE 22NOV2006	SCALE 1:1.25
				SHEET 4 OF 5

REVISION HISTORY			
REV	DATE	BY	DESCRIPTION
G	01APR2024	PBJ/VK	PRN: P2024-0589

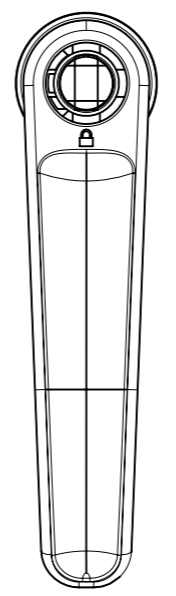
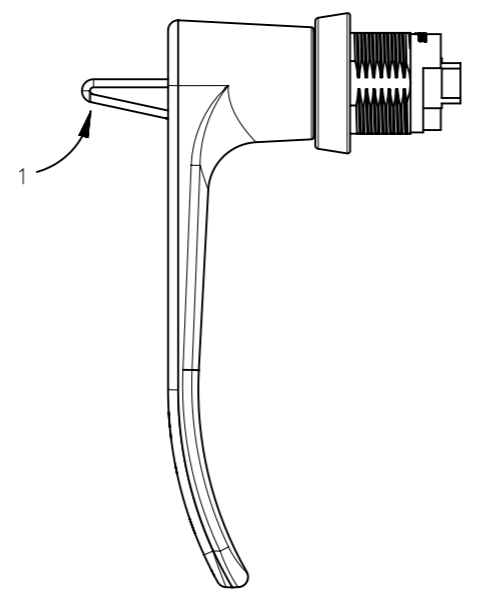
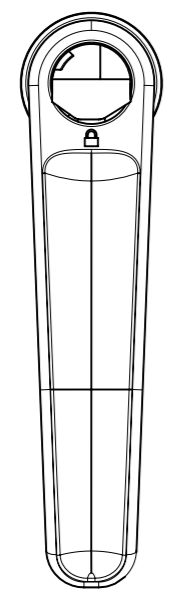
LOCK CORE INSTALLATION

(PART No. E5-9-73X-UU1-10)

LOCK CORE INSTALLATION-

1. SQUEEZING SPRING LEG TOWARD CENTER OF PLUG.

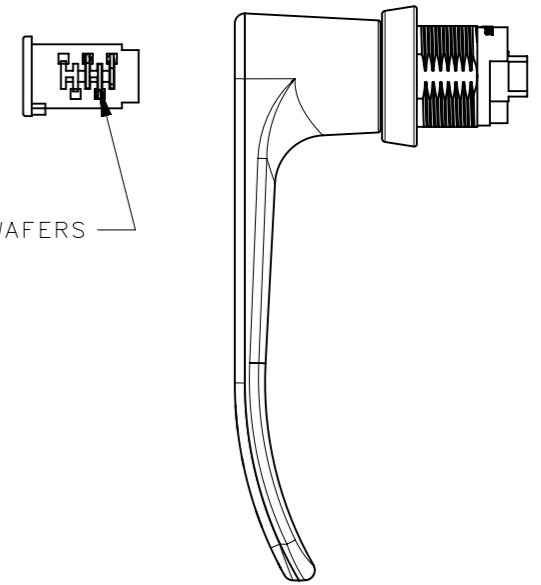
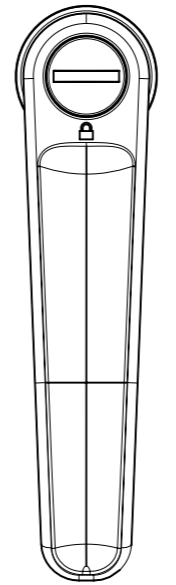
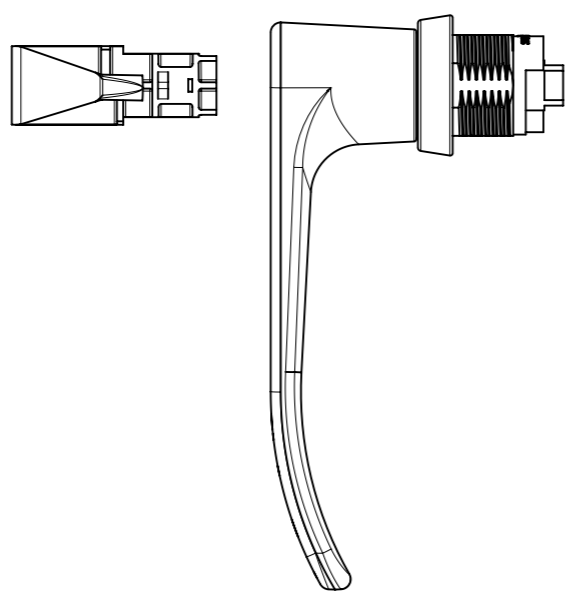
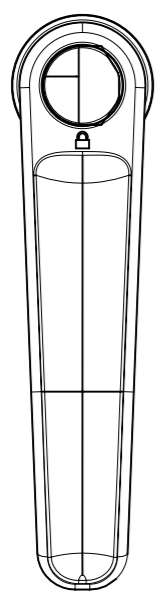
3. VERIFY ORIENTATION OF LOCK EXTENDER AS SHOWN.



2. WITH SPRING DEPRESSED, ROTATE PLUG 90° COUNTER CLOCKWISE AND PULL PLUG OUT OF DRIVER.

4. WITH WAFERS PROTRUDING 90° CLOCKWISE FROM LOCK SYMBOL, INSERT LOCK CORE INTO DRIVER.

5. INSERT KEY INTO LOCK CORE AND TURN 90° CLOCKWISE TO VERIFY LOCK CORE IS FULLY SEATED AND OPERATING PROPERLY AFTER INSTALLATION.



CPB NUMBER 2024-0229	THIRD ANGLE PROJECTION	southco [®] CONNECT • CREATE • INNOVATE		
	MILLIMETERS [IN]			
SURFACE AREA	TOLERANCES UNLESS OTHERWISE NOTED	DESCRIPTION E5 QUAD LATCH, (L-HANDLE) M22 X 24.9 HOUSING		
VOLUME	ALL DIMENSIONS WITHOUT TOLERANCES ARE FOR REFERENCE ONLY.	SIZE A3	SYSTEM NX	DWG NO. J-E5-9-7
PROPRIETARY ITEM <small>EXCEPT FOR USES EXPRESSLY GRANTED IN WRITING, INFORMATION DISCLOSED HEREON IS CONFIDENTIAL AND ALL RIGHTS, PATENT AND OTHERWISE, ARE RESERVED BY SOUTHCO, INC.</small>	PER ASME Y14.5M-2009	DRAWN BY MDY	DATE 22NOV2006	SCALE 1:1.5
				SHEET 5 OF 5