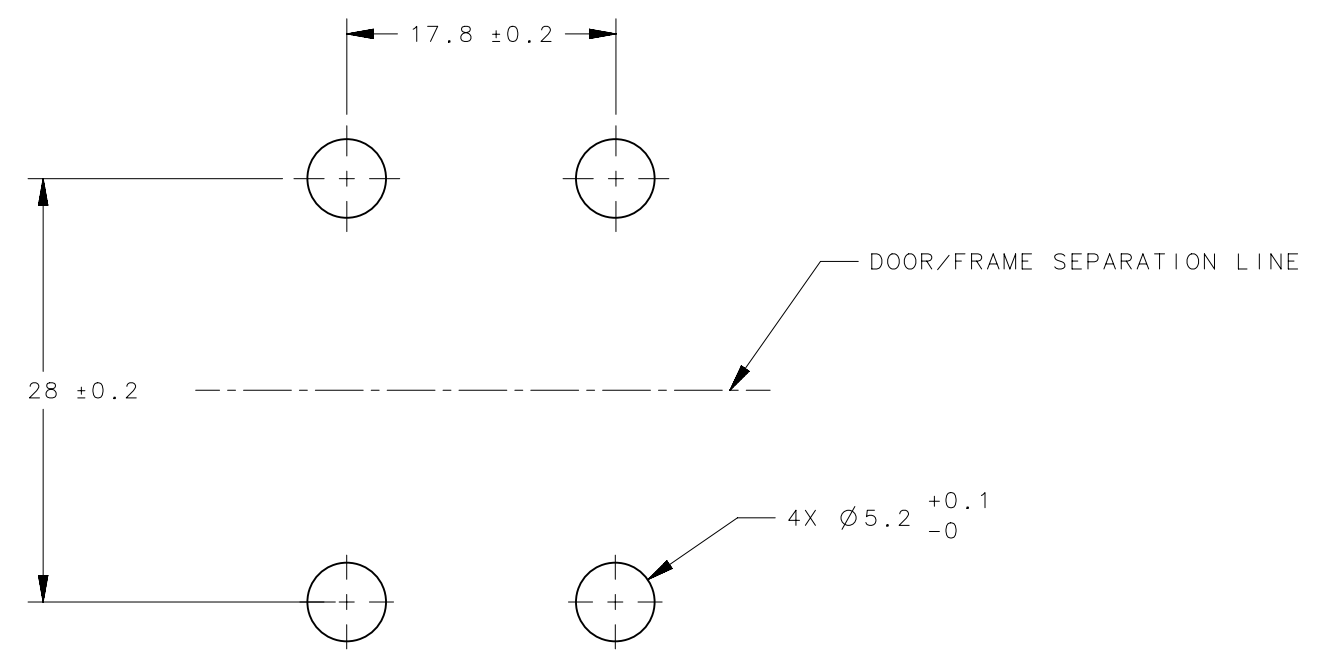
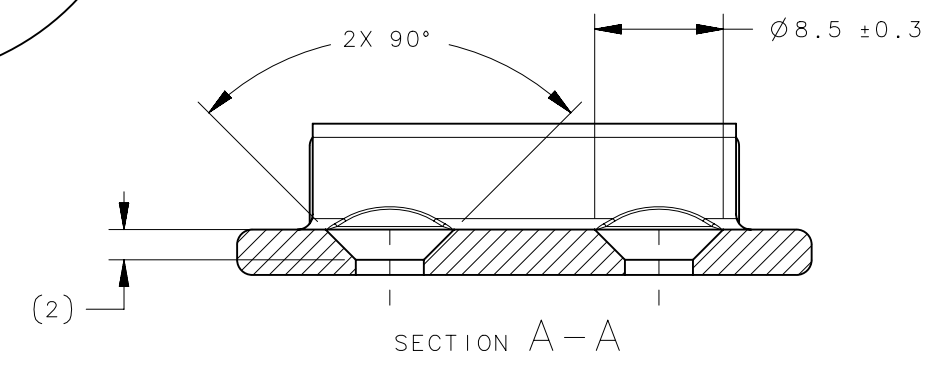
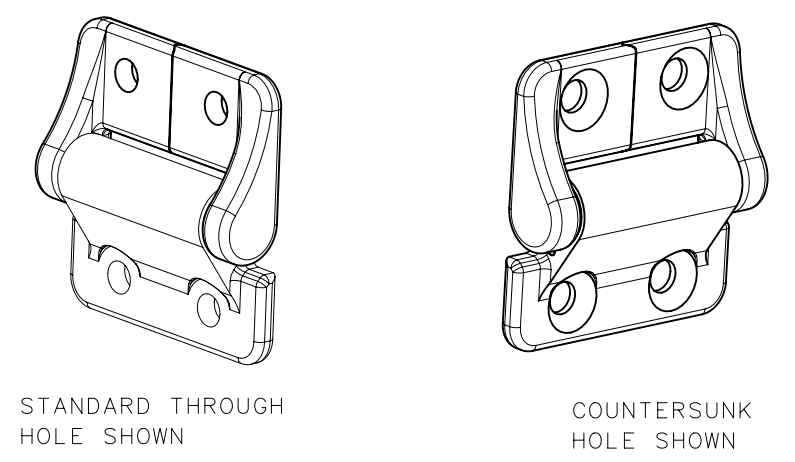
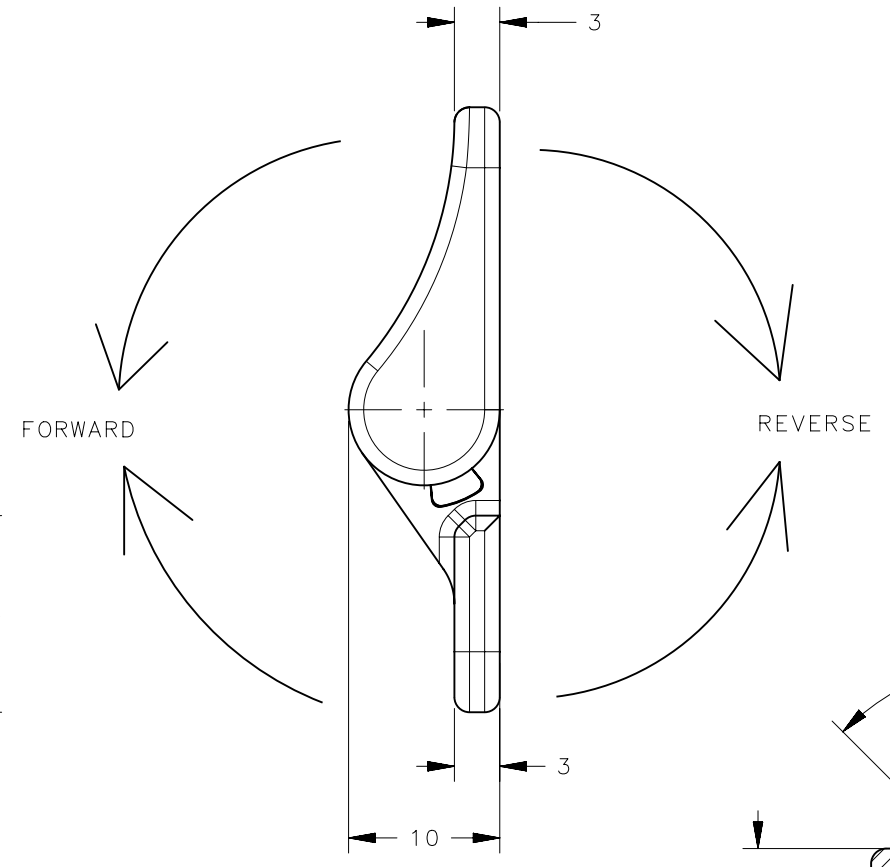
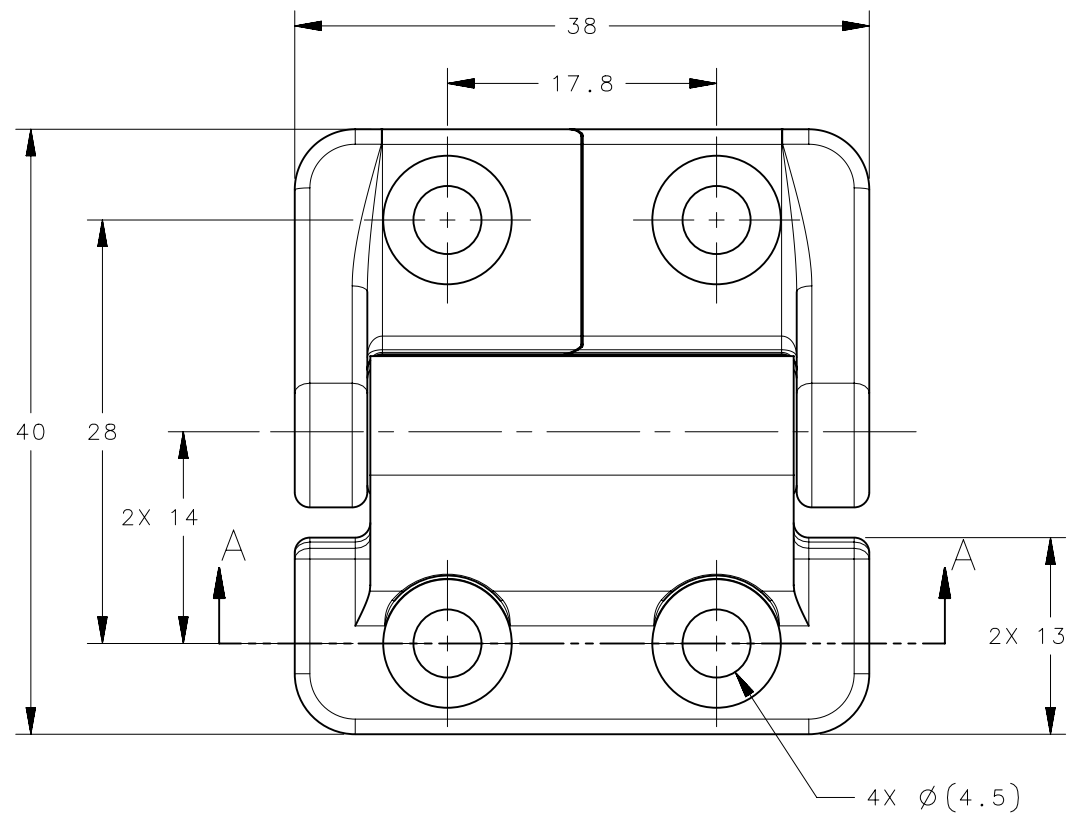


REVISION HISTORY			
REV	DATE	BY	DESCRIPTION
P	03SEP2024	SAK/DMS	PRN:P2024-1501



PART NUMBER (THROUGH HOLES)	PART NUMBER (COUNTERSUNK HOLES)	FORWARD TORQUE	REVERSE TORQUE
E6-10-204-XX	E6-10-204C-XX	0.45 N-m (4.0 in-lbs)	
E6-10-208-XX	E6-10-208C-XX	0.9 N-m (8.0 in-lbs)	
E6-10-212-XX	E6-10-212C-XX	1.4 N-m (12.0 in-lbs)	
E6-10-216-XX	E6-10-216C-XX	1.8 N-m (16.0 in-lbs)	
E6-10-220-XX	E6-10-220C-XX	2.3 N-m (20.0 in-lbs)	
E6-10-212F-XX	E6-10-212FC-XX	1.4 N-m (12.0 in-lbs)	0.8 N-m (7.2 in-lbs)
E6-10-216F-XX	E6-10-216FC-XX	1.8 N-m (16.0 in-lbs)	1.1 N-m (9.6 in-lbs)
E6-10-220F-XX	E6-10-220FC-XX	2.3 N-m (20.0 in-lbs)	1.4 N-m (12.0 in-lbs)
E6-10-224F-XX	E6-10-224FC-XX	2.8 N-m (24.0 in-lbs)	1.7 N-m (14.4 in-lbs)
E6-10-212R-XX	E6-10-212RC-XX	0.8 N-m (7.2 in-lbs)	1.4 N-m (12.0 in-lbs)
E6-10-216R-XX	E6-10-216RC-XX	1.1 N-m (9.6 in-lbs)	1.8 N-m (16.0 in-lbs)
E6-10-220R-XX	E6-10-220RC-XX	1.4 N-m (12.0 in-lbs)	2.3 N-m (20.0 in-lbs)
E6-10-224R-XX	E6-10-224RC-XX	1.7 N-m (14.4 in-lbs)	2.8 N-m (24.0 in-lbs)

PANEL PREPARATION

- NOTES:
- PERFORMANCE TORQUE TOLERANCE $\pm 20\%$
 - DESIGNED TO ACCEPT M4 OR No. 8 SCREW OR EQUIVALENT
 - MATERIAL AND FINISH:
HINGE LEAVES: DIE CAST ALUMINUM, SEE TABLE FOR FINISH
SHAFT & PIN: STEEL
O-RINGS: BUNA-N RUBBER
BEARINGS: DIE CAST ZINC

PART NUMBER	DESCRIPTION	FINISH
E6-10-2XXX-63	ASSEMBLY - AS CAST	NATURAL
E6-10-2XXX-50	ASSEMBLY - COATED	BLACK
E6-10-2XXX-70	ASSEMBLY - COATED	SILVER

THIRD ANGLE PROJECTION	MILLIMETERS [IN]	 CONNECT • CREATE • INNOVATE	
TOLERANCES UNLESS OTHERWISE NOTED		E6-200 SERIES HINGE ASSEMBLY	
ALL DIMENSIONS WITHOUT TOLERANCES ARE FOR REFERENCE ONLY.		SIZE	SYSTEM
<small>PROPRIETARY ITEM EXCEPT FOR USES EXPRESSLY GRANTED IN WRITING. INFORMATION DISCLOSED HEREON IS CONFIDENTIAL AND ALL RIGHTS, PATENT AND OTHERWISE, ARE RESERVED BY SOUTHCO, INC.</small>		A3	NX
PER ASME Y14.5M-2009		DWG NO.	J-E6-10-2-50
DRAWN BY		DATE	SCALE
ALS		20JUL2006	2:1
		SHEET	1 OF 1