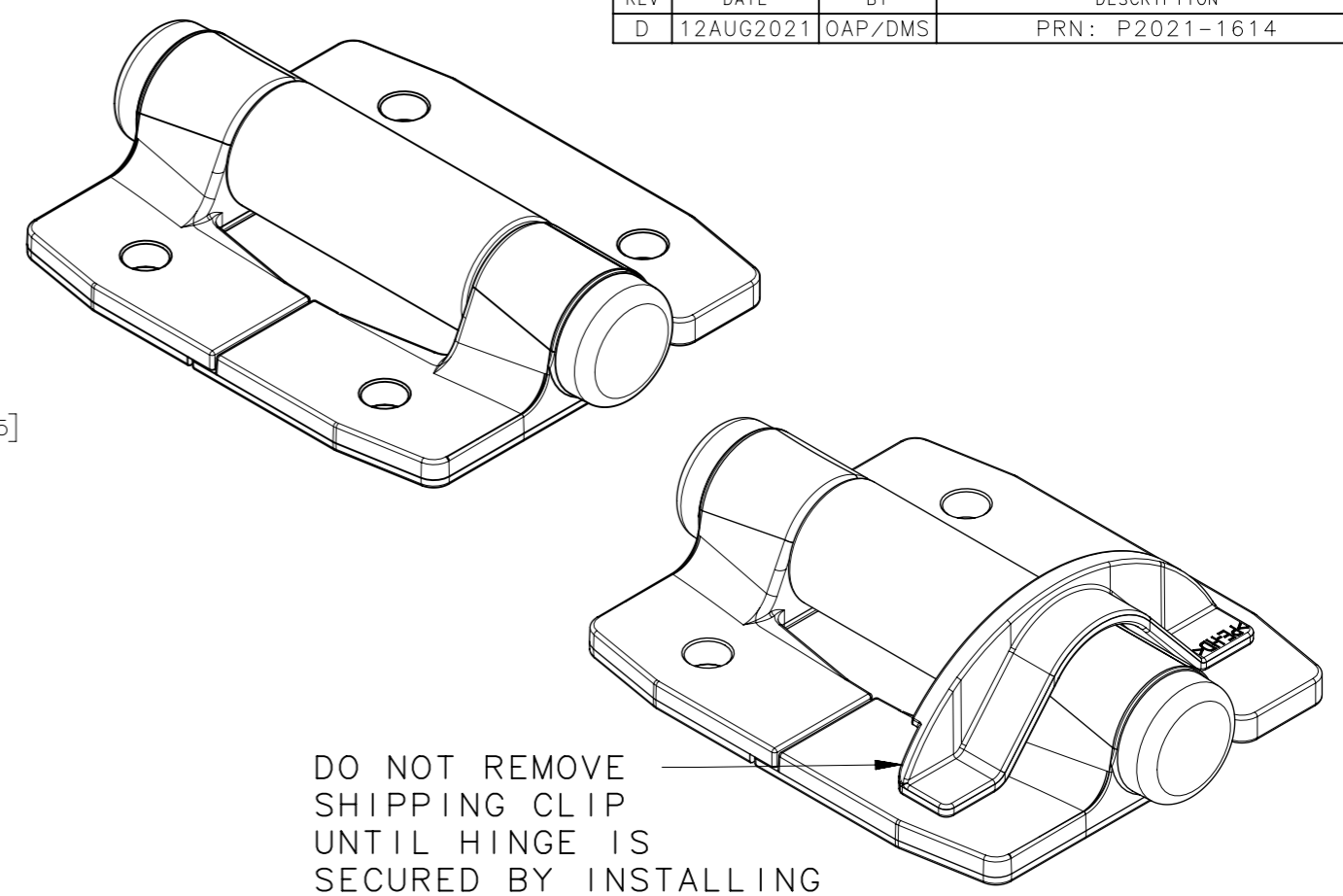
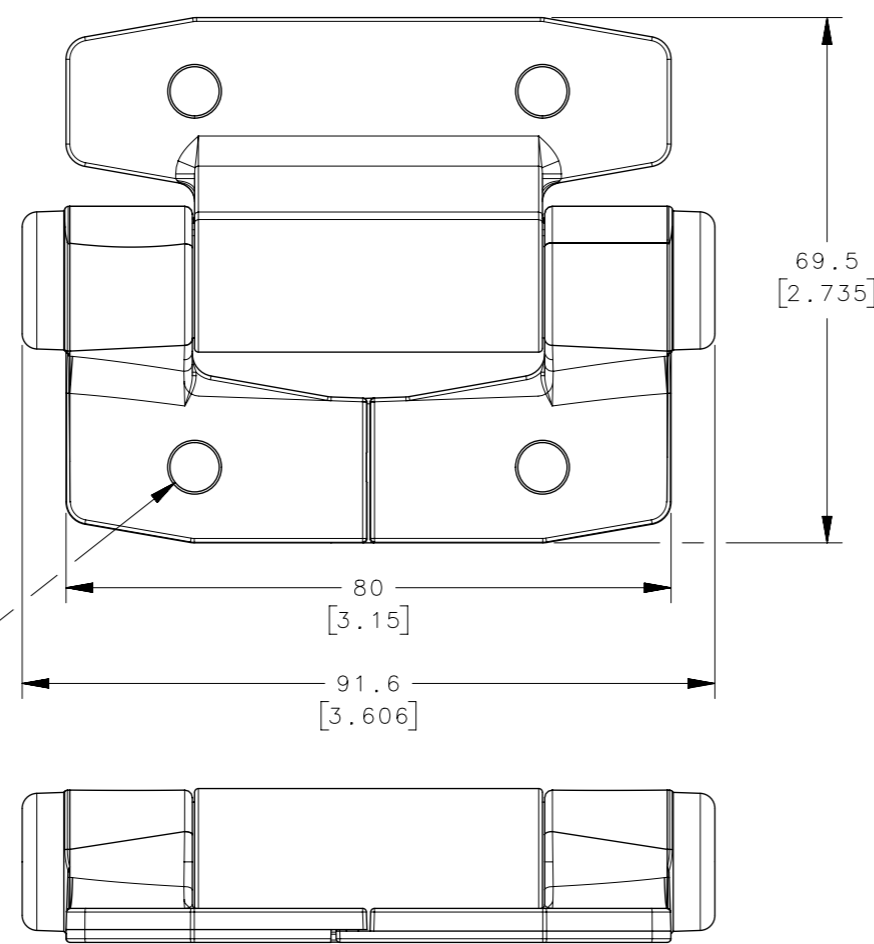
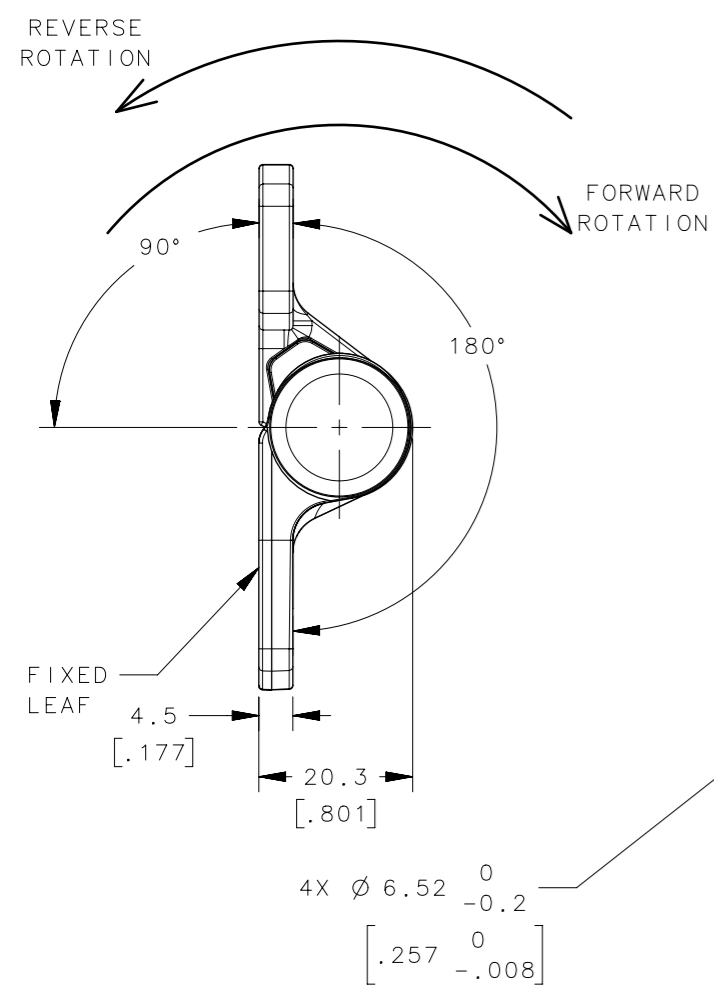


| REVISION HISTORY | | | |
|------------------|-----------|---------|-----------------|
| REV | DATE | BY | DESCRIPTION |
| D | 12AUG2021 | OAP/DMS | PRN: P2021-1614 |

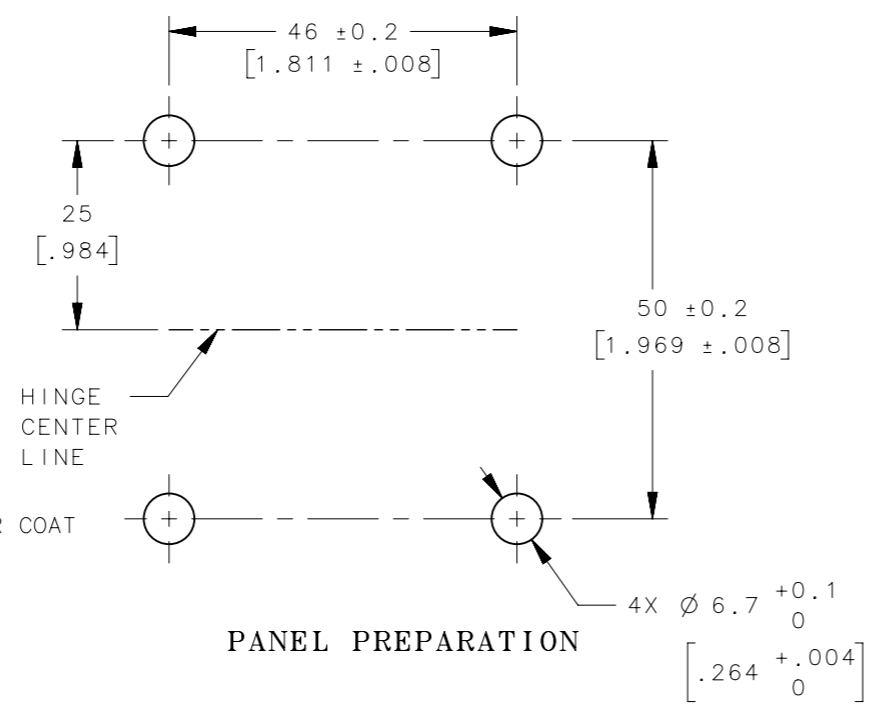


DO NOT REMOVE SHIPPING CLIP UNTIL HINGE IS SECURED BY INSTALLING FIRST PAIR OF SCREWS; DISCARD CLIP WHEN REMOVED

| SOUTHCO PART NUMBER | FORWARD TORQUE | REVERSE TORQUE |
|---------------------|----------------------------|----------------|
| E6-10-620F0-Z | 2.3±0.46 Nm (20±4 in-lb) | FREE |
| E6-10-635F0-Z | 3.9±0.78 Nm (35±7 in-lb) | FREE |
| E6-10-650F0-Z | 5.7±1.1 Nm (50±10 in-lb) | FREE |
| E6-10-665F0-Z | 7.3±1.4 Nm (65±13 in-lb) | FREE |
| E6-10-680F0-Z | 9±1.8 Nm (80±16 in-lb) | FREE |
| E6-10-695F0-Z | 10.7±2.1 Nm (95±19 in-lb) | FREE |
| E6-10-6110F0-Z | 12.4±2.5 Nm (110±22 in-lb) | FREE |

| | | |
|----------------|------|----------------------------|
| E6-10-620R0-Z | FREE | 2.3±0.46 Nm (20±4 in-lb) |
| E6-10-635R0-Z | FREE | 3.9±0.78 Nm (35±7 in-lb) |
| E6-10-650R0-Z | FREE | 5.7±1.1 Nm (50±10 in-lb) |
| E6-10-665R0-Z | FREE | 7.3±1.4 Nm (65±13 in-lb) |
| E6-10-680R0-Z | FREE | 9±1.8 Nm (80±16 in-lb) |
| E6-10-695R0-Z | FREE | 10.7±2.1 Nm (95±19 in-lb) |
| E6-10-6110R0-Z | FREE | 12.4±2.5 Nm (110±22 in-lb) |

Z DESIGNATES FINISH:
 Z = 50: BLACK POWDER COAT
 Z = 76; WHITE POWDER COAT



- NOTES:
- A. USE M6 MOUNTING HARDWARE
 - B. VISIBLE SURFACES WHEN INSTALLED TO MEET CLASS B REQUIREMENTS OF SOUTHCO COSMETIC STANDARD S-121
 - C. MATERIAL AND FINISH:
 HOUSING AND LEAVES: ALUMINUM ALLOY, POWDER COAT
 SHAFT, TORQUE ELEMENTS, COILED SPRING PIN, CLUTCH HOUSING, ROLLERS - STEEL
 WASHERS, CLUTCH SPRINGS - STAINLESS STEEL
 O-RINGS - BUNA-N RUBBER
 BEARINGS - BRASS
 BUSHINGS - DIE CAST ZINC, POWDER COAT
 SHIPPING CLIP - UHMW POLYETHYLENE
 THIS PRODUCT IS RoHS COMPLIANT
 - D. TORQUE IN FREE DIRECTION IS 0.5 Nm MAXIMUM

| | | |
|--|---|---|
| CPB NUMBER 2017-1180 | THIRD ANGLE PROJECTION | |
| | MILLIMETERS [IN] | |
| | TOLERANCES UNLESS OTHERWISE NOTED | DESCRIPTION HINGE & CONTROLLED MOTION DEVICE ONE WAY FRICTION HINGE |
| PROPRIETARY ITEM EXCEPT FOR USES EXPRESSLY GRANTED IN WRITING, INFORMATION DISCLOSED HEREON IS CONFIDENTIAL AND ALL RIGHTS, PATENT AND OTHERWISE, ARE RESERVED BY SOUTHCO, INC. | ALL DIMENSIONS WITHOUT TOLERANCES ARE FOR REFERENCE ONLY. | SIZE SYSTEM A3 NX |
| PER ASME Y14.5M-1994 | DRAWN BY RES | DWG NO. J-E6-10-6-0 |
| | DATE 31JAN2019 | SCALE 1:1 |
| | | SHEET 1 OF 1 |