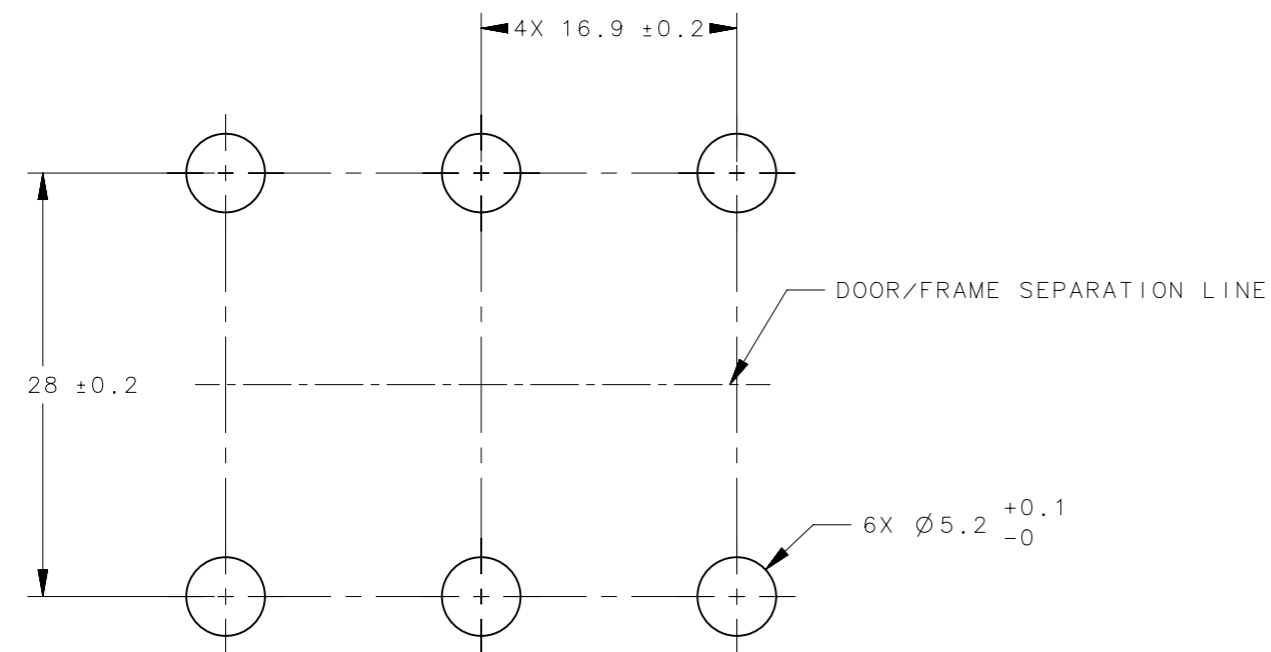
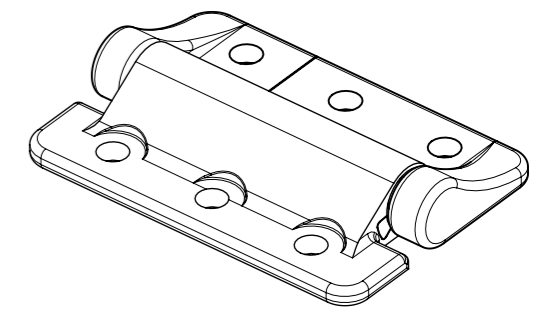
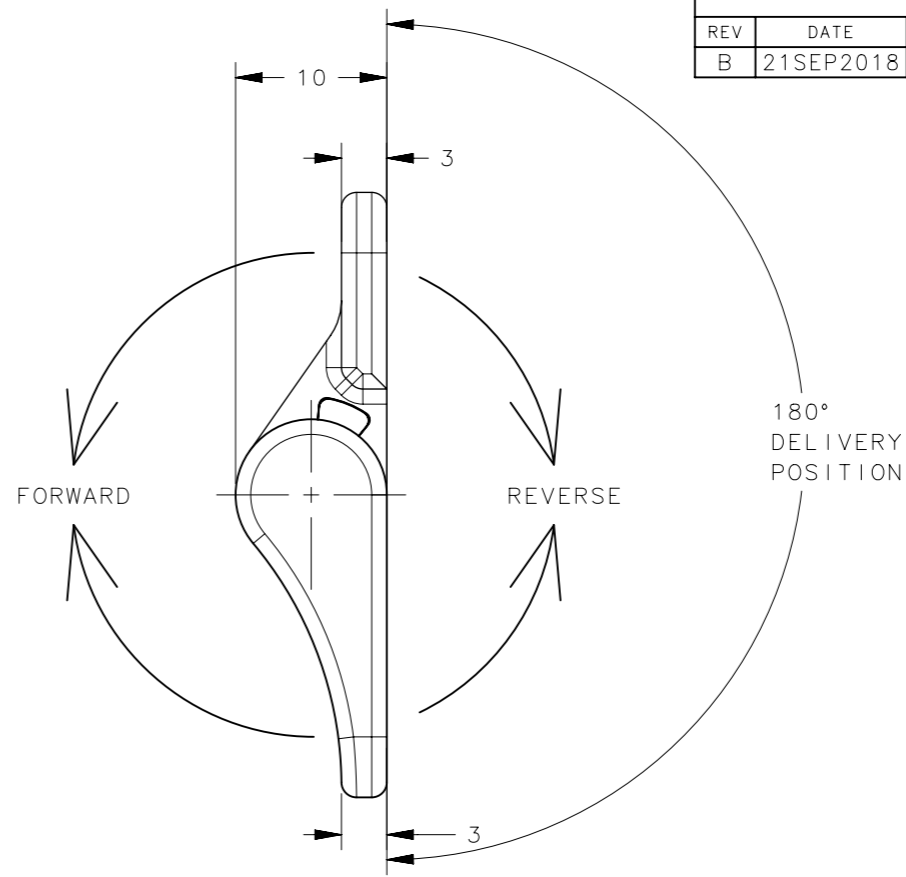
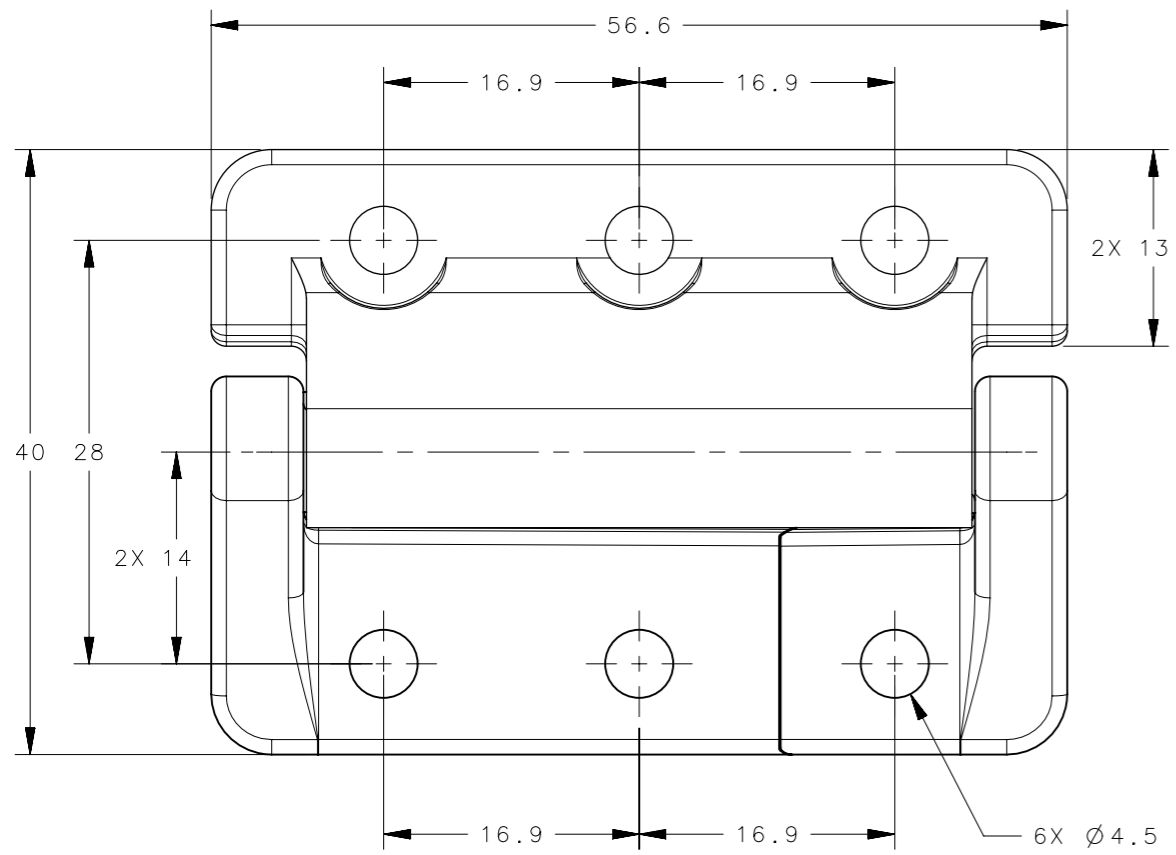


REVISION HISTORY			
REV	DATE	BY	DESCRIPTION
B	21SEP2018	JD/YGC	PRN: P2018-2017



PANEL PREPARATION



PART NUMBER	FORWARD TORQUE	REVERSE TORQUE
E6-10E-200-XX	FREE OPERATING	
E6-10E-208-XX	0.9 N-m (8.0 in-lbs)	
E6-10E-212-XX	1.4 N-m (12.0 in-lbs)	
E6-10E-216-XX	1.8 N-m (16.0 in-lbs)	
E6-10E-220-XX	2.3 N-m (20.0 in-lbs)	
E6-10E-224-XX	2.7 N-m (24.0 in-lbs)	
E6-10E-230-XX	3.4 N-m (30.0 in-lbs)	
E6-10E-212F-XX	1.4 N-m (12.0 in-lbs)	0.8 N-m (7.2 in-lbs) (REF)
E6-10E-216F-XX	1.8 N-m (16.0 in-lbs)	1.1 N-m (9.6 in-lbs) (REF)
E6-10E-220F-XX	2.3 N-m (20.0 in-lbs)	1.4 N-m (12.0 in-lbs) (REF)
E6-10E-224F-XX	2.7 N-m (24.0 in-lbs)	1.6 N-m (14 in-lbs) (REF)
E6-10E-230F-XX	3.4 N-m (30.0 in-lbs)	2.0 N-m (18 in-lbs) (REF)
E6-10E-240F-XX	4.5 N-m (40.0 in-lbs)	2.7 N-m (24.0 in-lbs) (REF)
E6-10E-212R-XX	0.8 N-m (7.2 in-lbs) (REF)	1.4 N-m (12.0 in-lbs)
E6-10E-216R-XX	1.1 N-m (9.6 in-lbs) (REF)	1.8 N-m (16.0 in-lbs)
E6-10E-220R-XX	1.4 N-m (12.0 in-lbs) (REF)	2.3 N-m (20.0 in-lbs)
E6-10E-224R-XX	1.6 N-m (14 in-lbs) (REF)	2.7 N-m (24.0 in-lbs)
E6-10E-230R-XX	2.0 N-m (18.0 in-lbs) (REF)	3.4 N-m (30.0 in-lbs)
E6-10E-240R-XX	2.7 N-m (24.0 in-lbs) (REF)	4.5 N-m (40.0 in-lbs)
PART NUMBER	DESCRIPTION	FINISH
E6-10E-2XXX-63	ASSEMBLY - AS CAST	NATURAL
E6-10E-2XXX-50	ASSEMBLY - COATED	BLACK POWDER
E6-10E-2XXX-70	ASSEMBLY - COATED	SILVER POWDER

NOTES:

- PERFORMANCE TORQUE TOLERANCE ±20%.
- DESIGNED TO ACCEPT M4 OR No. 8 SCREW OR EQUIVALENT.
- MATERIAL:  
HINGE LEAVES: DIE CAST ALUMINUM, SEE TABLE FOR FINISH,  
SHAFT & PIN: STEEL,  
O-RINGS: BUNA-N RUBBER,  
BEARINGS: DIE CAST ZINC.

THIRD ANGLE PROJECTION			
MILLIMETERS [IN]			
TOLERANCES UNLESS OTHERWISE NOTED	DESCRIPTION	E6-10E EXTENDED HINGE ASSEMBLY	
ALL DIMENSIONS WITHOUT TOLERANCES ARE FOR REFERENCE ONLY.	SIZE	SYSTEM	DWG NO.
PER ASME Y14.5M-1994	A3	NX	J-E6-10E-2
PROPRIETARY ITEM	DRAWN BY	DATE	SCALE
EXCEPT FOR USES EXPRESSLY GRANTED IN WRITING, INFORMATION DISCLOSED HEREON IS CONFIDENTIAL AND ALL RIGHTS, PATENT AND OTHERWISE, ARE RESERVED BY SOUTHCO, INC.	JD	11MAY2017	2:1
			SHEET 1 OF 1