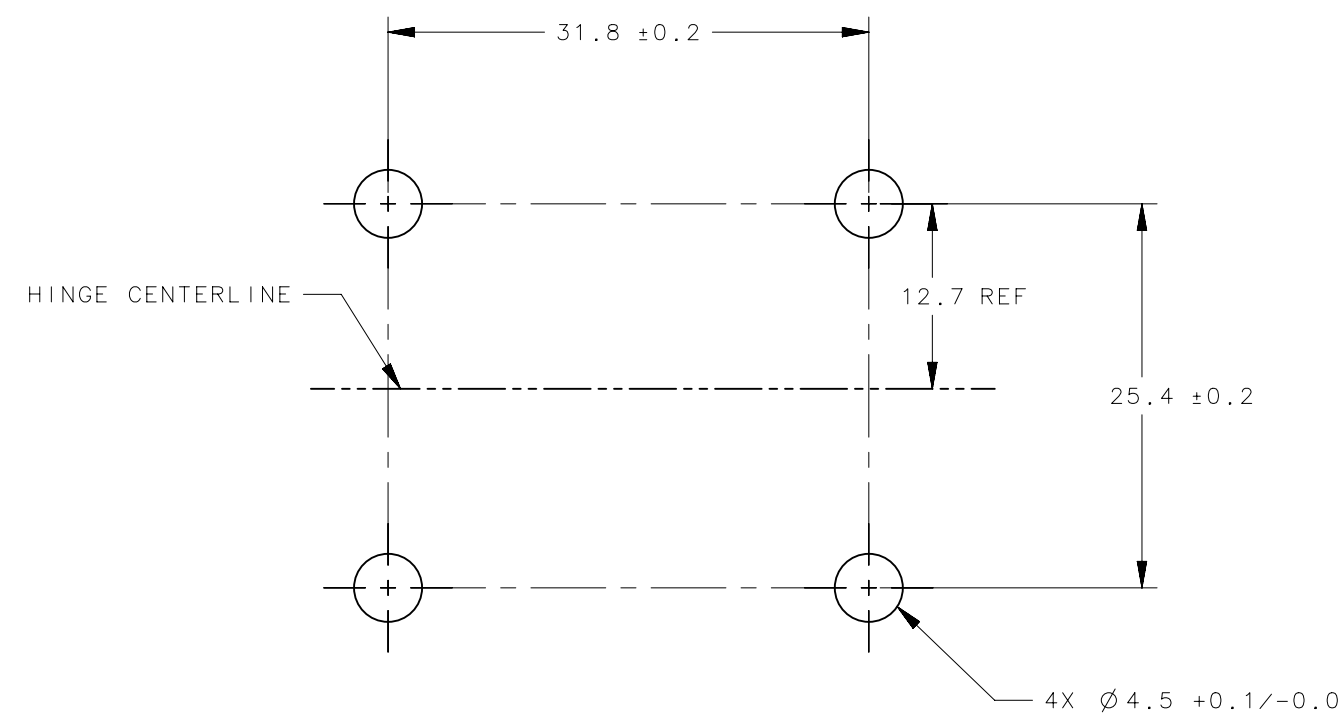
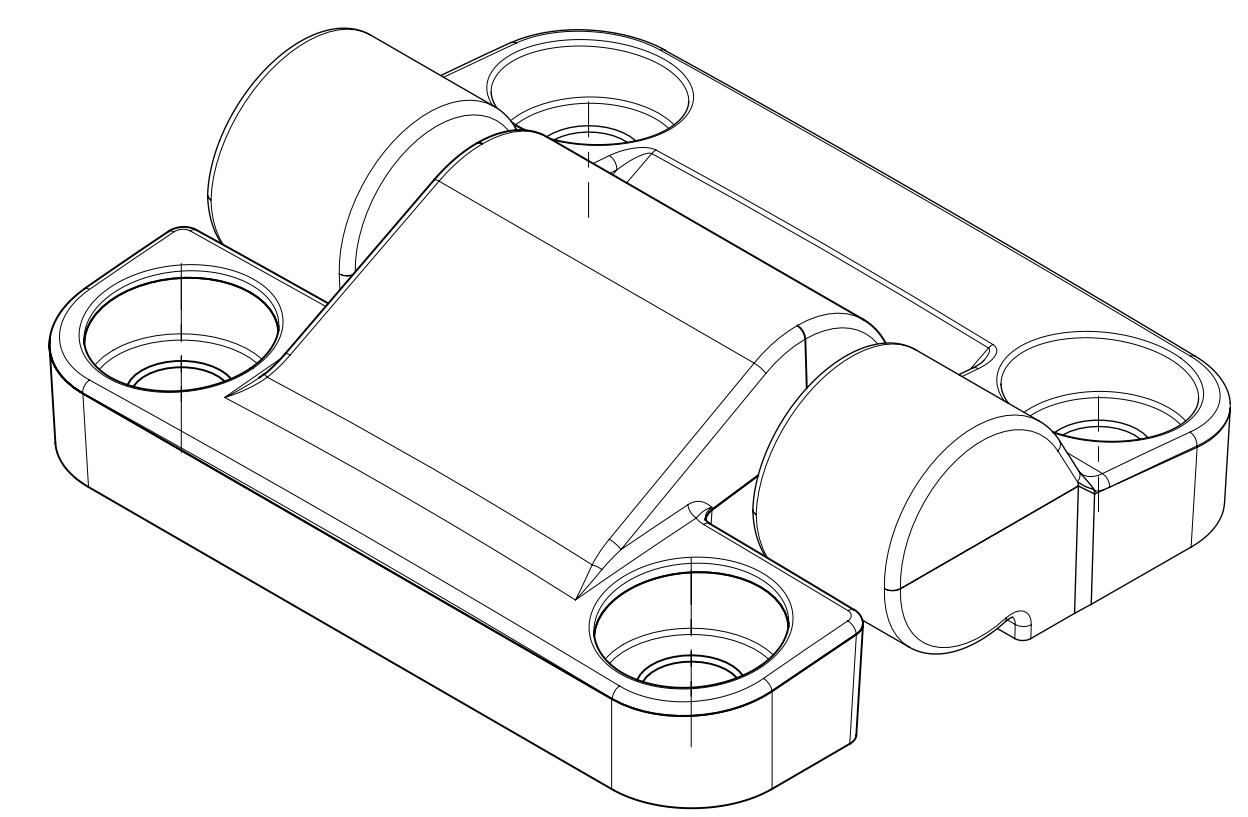


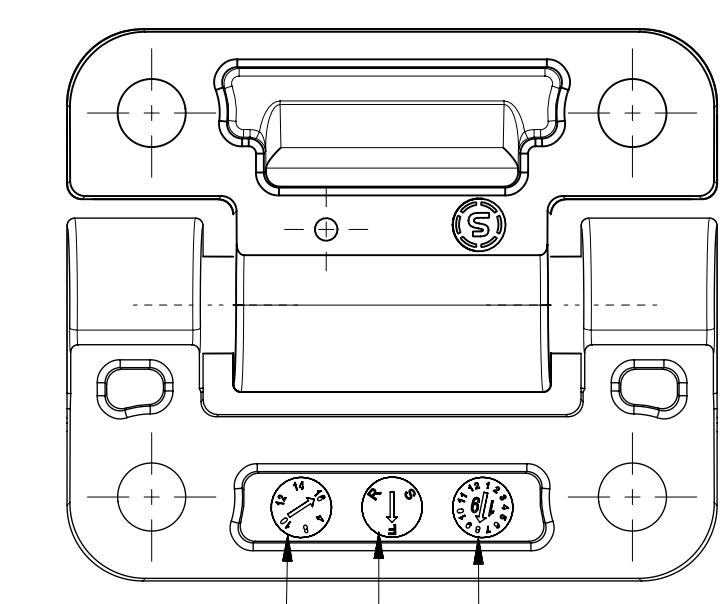
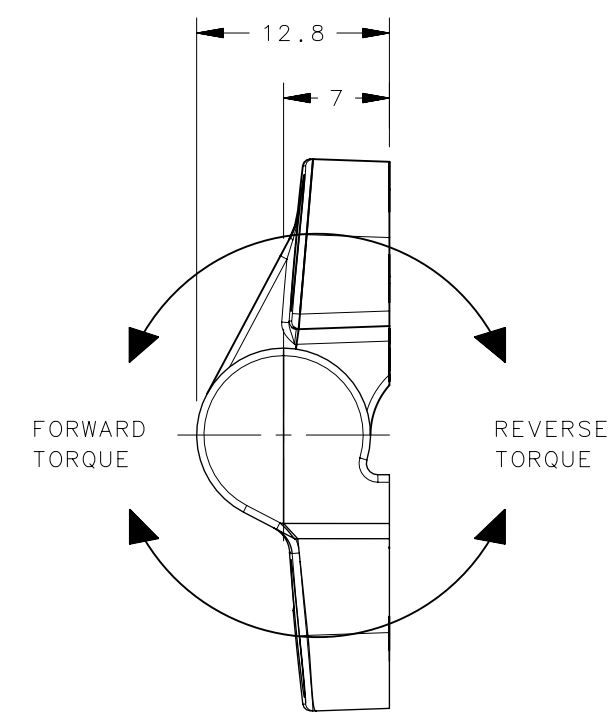
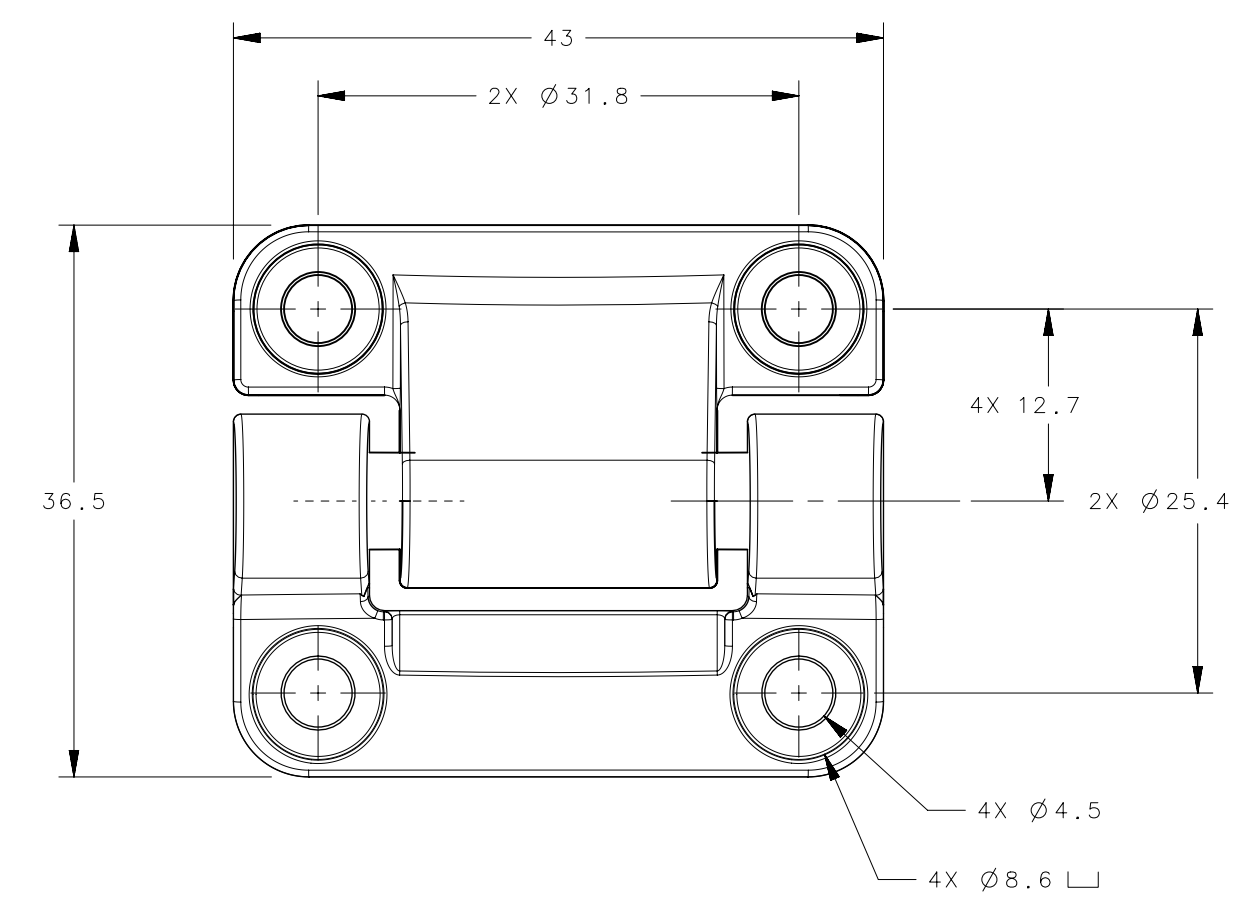
REVISION HISTORY			
REV	DATE	BY	DESCRIPTION
A	30JAN2024	AJH/LCR	PRN: 2024-0199



PANEL PREPARATION



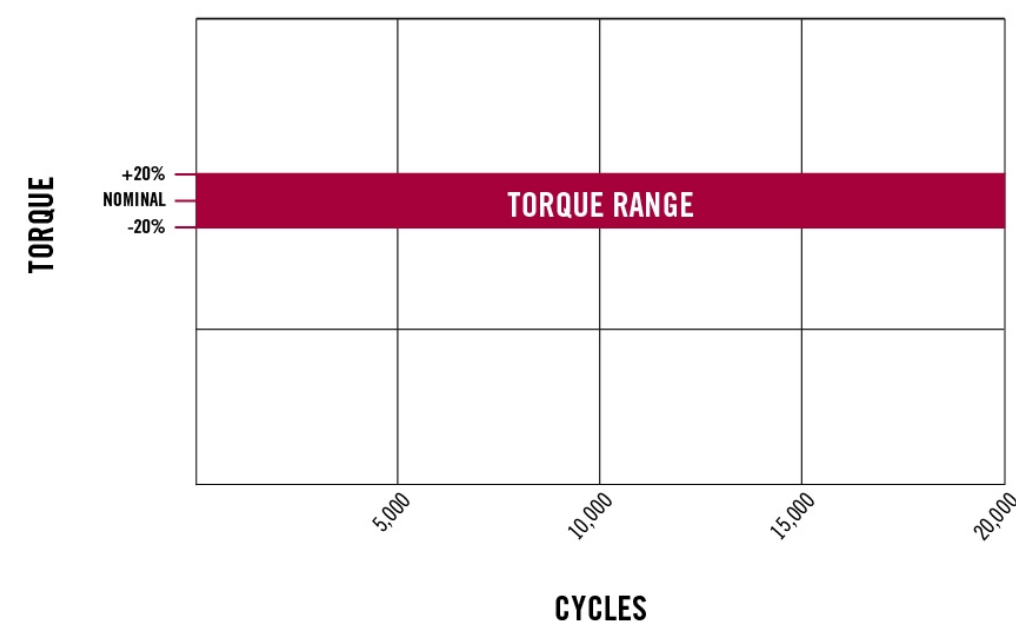
SCALE 3:1



TORQUE VALUE
TORQUE DIRECTION
MANUFACTURE DATE (MONTH / YEAR)

FINISH	
-ZZ	MATERIAL, COLOR
E6-50-3XXX-10	NYLON, WHITE
E6-50-3XXX-20	NYLON, BLACK

TYPICAL TORQUE TREND FOR E6-5X-XX-XX (REFERENCE ONLY)



- NOTES:
- PERFORMANCE TORQUE TOLERANCE $\pm 20\%$ OVER 20,000 CYCLES
* - MINOR RESIDUAL TORQUE DUE TO THE MOLDING PROCESS FOR MINIMAL AMOUNT OF CYCLES SHOULD BE EXPECTED
 - DESIGNED TO ACCEPT M4 SCREW OR EQUIVALENT
 - MATERIAL AND FINISH:
HINGE LEAVES AND HOUSING: NYLON
INTERNAL COMPONENTS: ZINC, HARDENED STEEL, ALUMINUM
 - SHOWN IN SHIPPING POSITION
 - MAX BACKLASH $\pm 2^\circ$ AFTER 20,000 CYCLES EXCLUDING FREE SWINGING VERSION.

PART NUMBER	FORWARD TORQUE, Nm (in-lbf)	REVERSE TORQUE, Nm (in-lbf)
E6-50-300-ZZ	FREE SWINGING *	
E6-50-314S-ZZ	1.58 (14)	
E6-50-310S-ZZ	1.13 (10)	
E6-50-308S-ZZ	0.90 (8)	
E6-50-304S-ZZ	0.45 (4)	
E6-50-316F-ZZ	1.81 (16)	1.27 (11.2) REF
E6-50-312F-ZZ	1.36 (12)	0.95 (8.4) REF
E6-50-308F-ZZ	0.90 (8)	0.63 (5.6) REF
E6-50-304F-ZZ	0.45 (4)	0.32 (2.8) REF
E6-50-316R-ZZ	1.27 (11.2) REF	1.81 (16)
E6-50-312R-ZZ	0.95 (8.4) REF	1.36 (12)
E6-50-308R-ZZ	0.63 (5.6) REF	0.90 (8)
E6-50-304R-ZZ	0.32 (2.8) REF	0.45 (4)

CPB NUMBER 2018-0439	THIRD ANGLE PROJECTION		southco CONNECT · CREATE · INNOVATE
	MILLIMETERS [IN]		
SURFACE AREA XXXXXmm ²	TOLERANCES UNLESS OTHERWISE NOTED		DESCRIPTION HINGE & CONTROLLED MOTION DEVICE
VOLUME XXXXXmm ³	ALL DIMENSIONS WITHOUT TOLERANCES ARE FOR REFERENCE ONLY.		SIZE SYSTEM C NX
PROPRIETARY ITEM	PER ASME Y14.5M-2009		DWG NO. J-E6-50-300
EXCEPT FOR USES EXPRESSLY GRANTED IN WRITING, INFORMATION DISCLOSED HEREON IS CONFIDENTIAL AND ALL RIGHTS, PATENT AND OTHERWISE, ARE RESERVED BY SOUTHCO, INC.	DRAWN BY JJT	DATE 16SEP2019	SCALE 1:1
			SHEET 1 OF 1