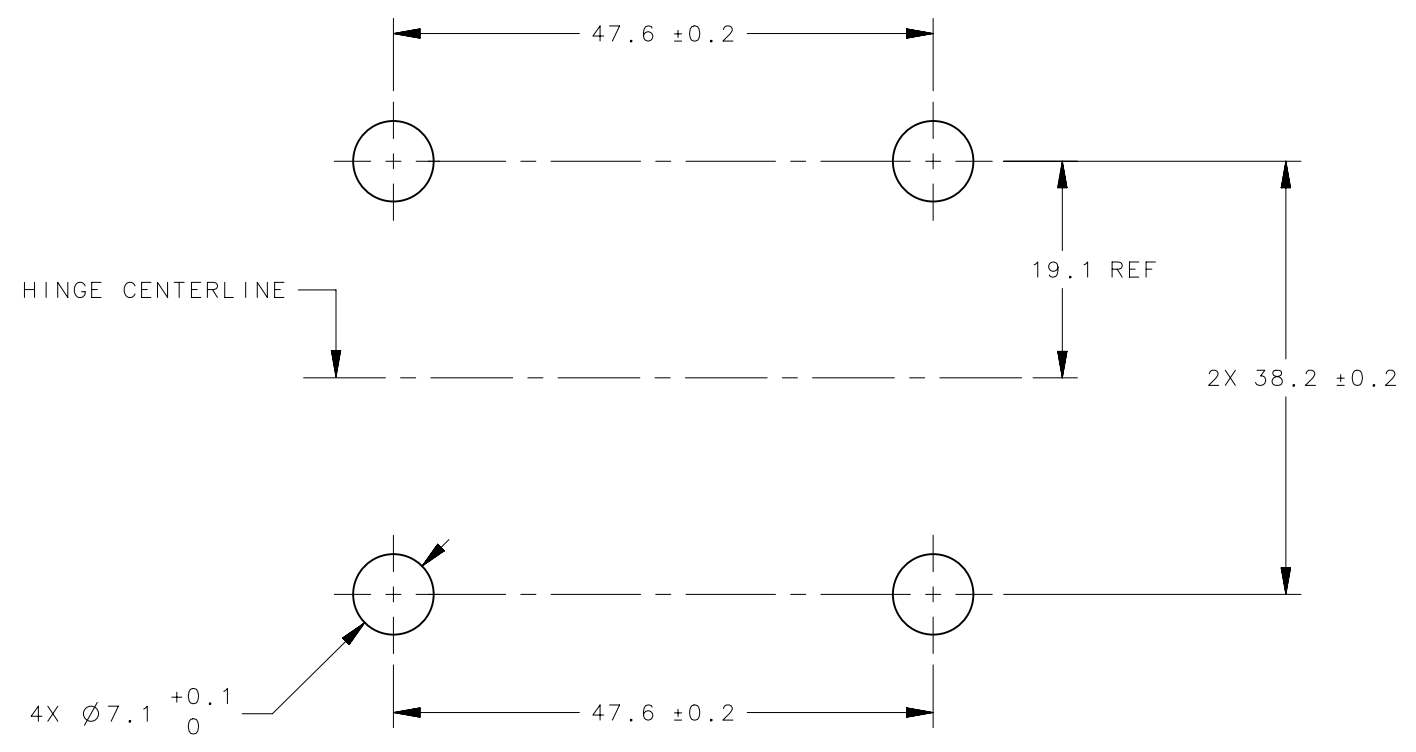
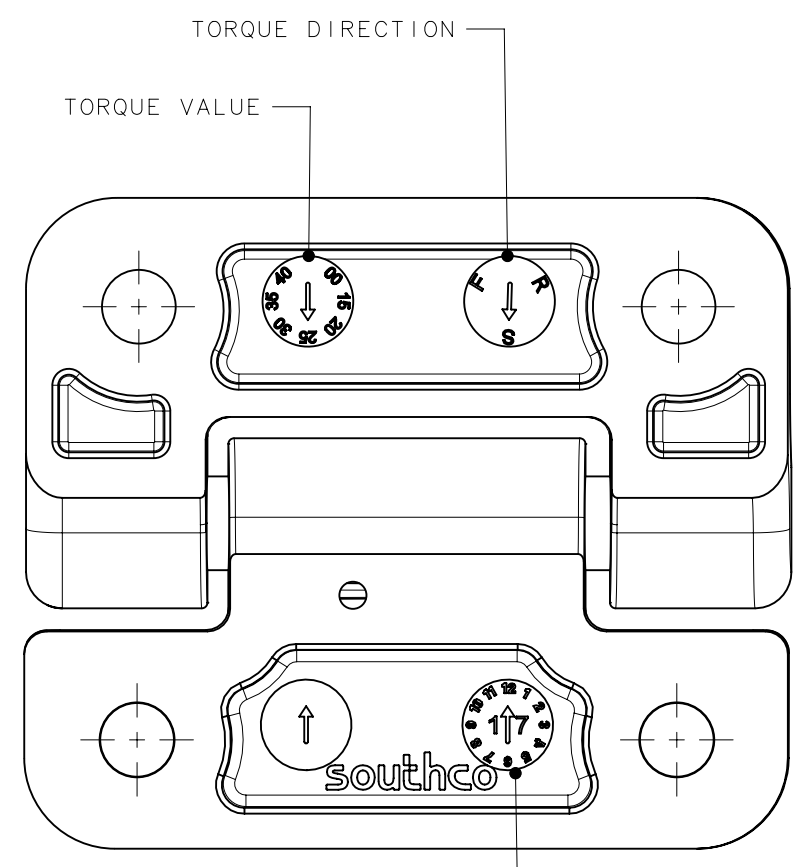
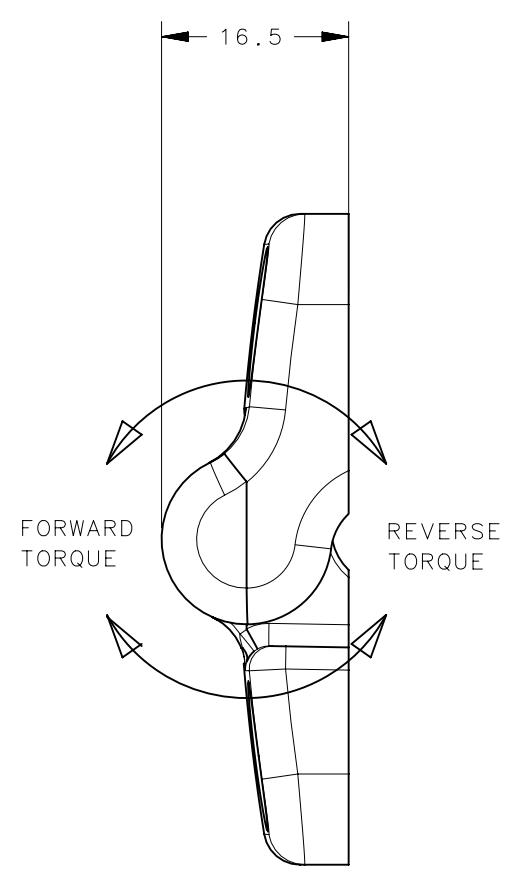
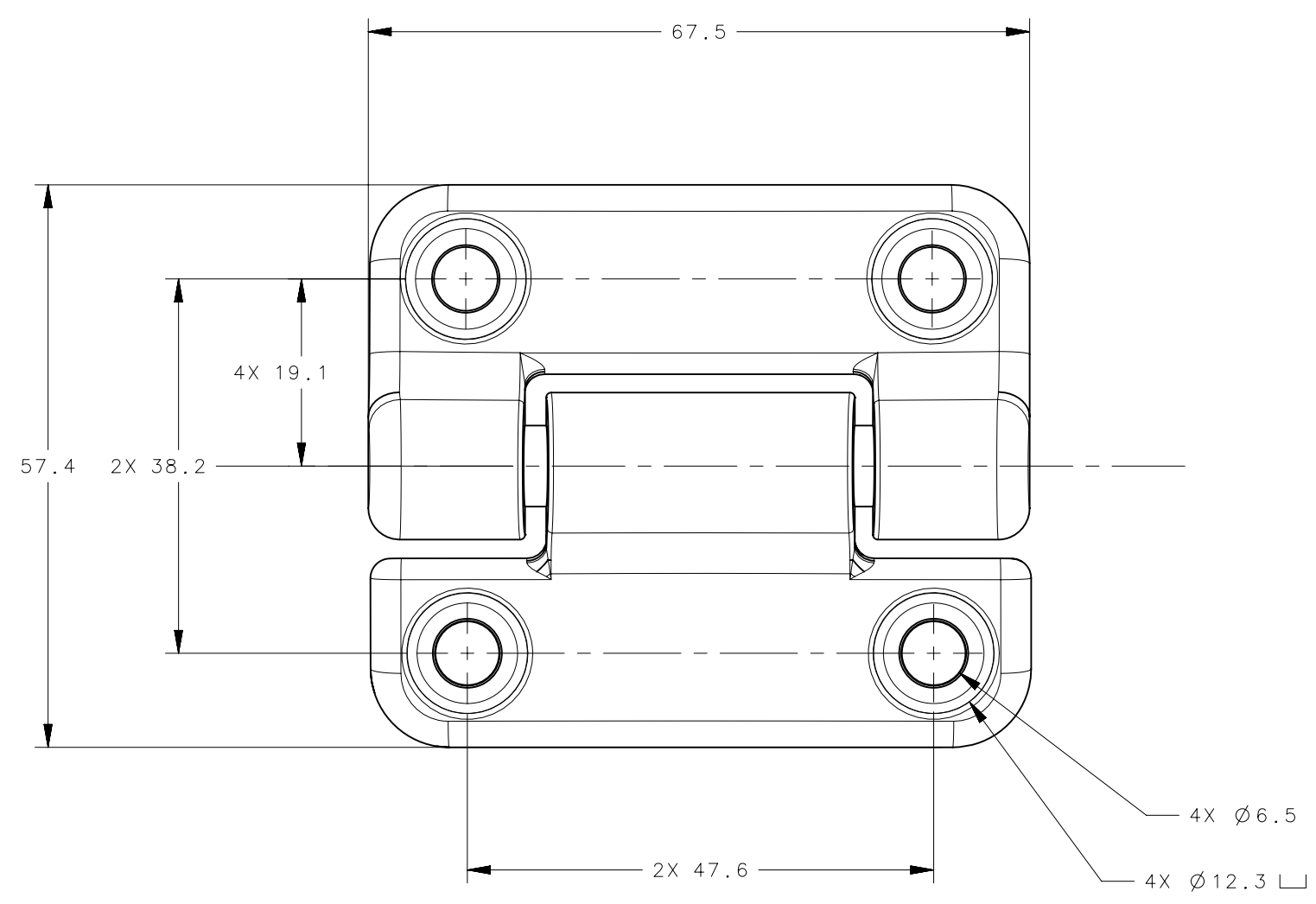
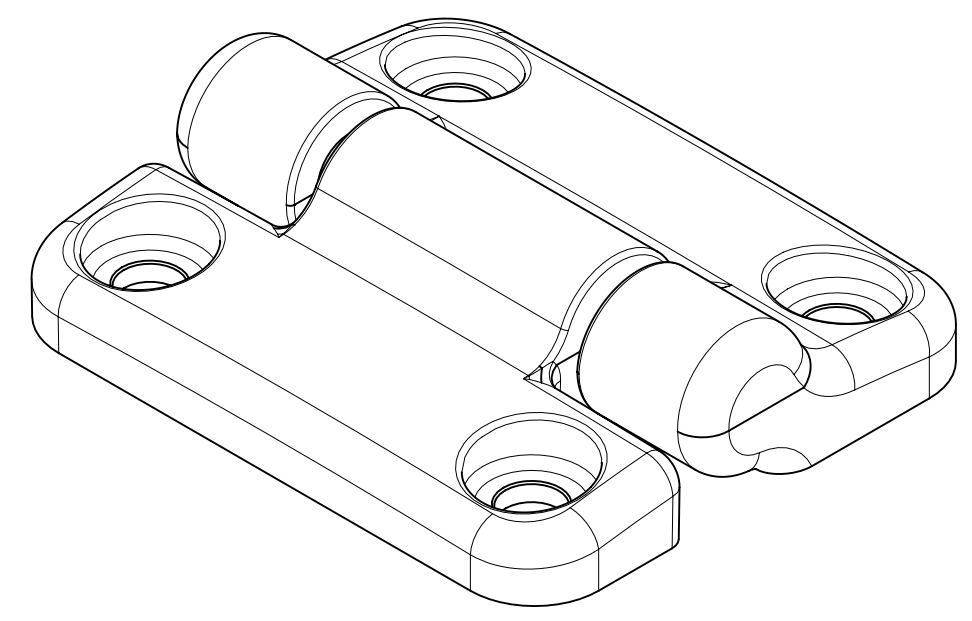


REVISION HISTORY			
REV	DATE	BY	DESCRIPTION
E	01FEB2023	JJT/LCR	PRN: P2023-0197



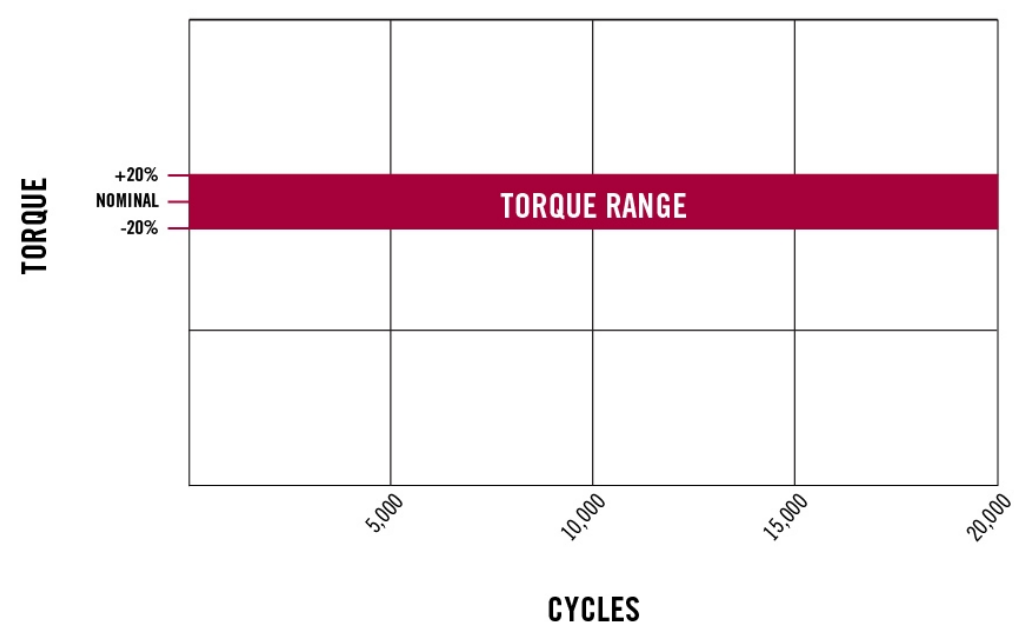
PANEL PREPARATION



FINISH	
-ZZ	MATERIAL, COLOR
E6-50-5XXX-10	NYLON, WHITE
E6-50-5XXX-20	NYLON, BLACK

PART NUMBER	FORWARD TORQUE, Nm (in-lbf)	REVERSE TORQUE, Nm (in-lbf)
E6-50-500-ZZ	FREE SWINGING *	
E6-50-535S-ZZ	3.95 (35)	
E6-50-530S-ZZ	3.39 (30)	
E6-50-525S-ZZ	2.82 (25)	
E6-50-520S-ZZ	2.26 (20)	
E6-50-515S-ZZ	1.69 (15)	
E6-50-540F-ZZ	4.52 (40)	3.16 (28) REF
E6-50-535F-ZZ	3.95 (35)	2.77 (24.5) REF
E6-50-530F-ZZ	3.39 (30)	2.37 (21) REF
E6-50-525F-ZZ	2.82 (25)	1.98 (17.5) REF
E6-50-520F-ZZ	2.26 (20)	1.58 (14) REF
E6-50-515F-ZZ	1.69 (15)	1.19 (10.5) REF

TYPICAL TORQUE TREND FOR E6-5X-XX-XX (REFERENCE ONLY)



- NOTES:
- PERFORMANCE TORQUE TOLERANCE ±20% OVER 20,000 CYCLES
* - MINOR RESIDUAL TORQUE DUE TO THE MOLDING PROCESS FOR A MINIMAL AMOUNT OF CYCLES SHOULD BE EXPECTED
 - DESIGNED TO ACCEPT M6 SCREW OR EQUIVALENT
 - MATERIAL AND FINISH:
HINGE LEAVES AND HOUSING: NYLON
INTERNAL COMPONENTS: ZINC, HARDENED STEEL, ANODIZED ALUMINUM
 - SHOWN IN SHIPPING POSITION
 - MAX BACKLASH ±1° AFTER 20,000 CYCLES

THIRD ANGLE PROJECTION	
MILLIMETERS [IN]	
SURFACE AREA	TOLERANCES UNLESS OTHERWISE NOTED
VOLUME	ALL DIMENSIONS WITHOUT TOLERANCES ARE FOR REFERENCE ONLY.
PROPRIETARY ITEM	DESCRIPTION: HINGE & CONTROLLED MOTION DEVICE E6 OVERMOLDED HINGE
EXCEPT FOR USES EXPRESSLY GRANTED IN WRITING, INFORMATION DISCLOSED HEREON IS CONFIDENTIAL AND ALL RIGHTS, PATENT AND OTHERWISE, ARE RESERVED BY SOUTHCO, INC.	SIZE: C SYSTEM: NX DWG NO.: J-E6-50-500
PER ASME Y14.5M-1994	DRAWN BY: JJT DATE: 01FEB2017 SCALE: 1.5:1 SHEET: 1 OF 1