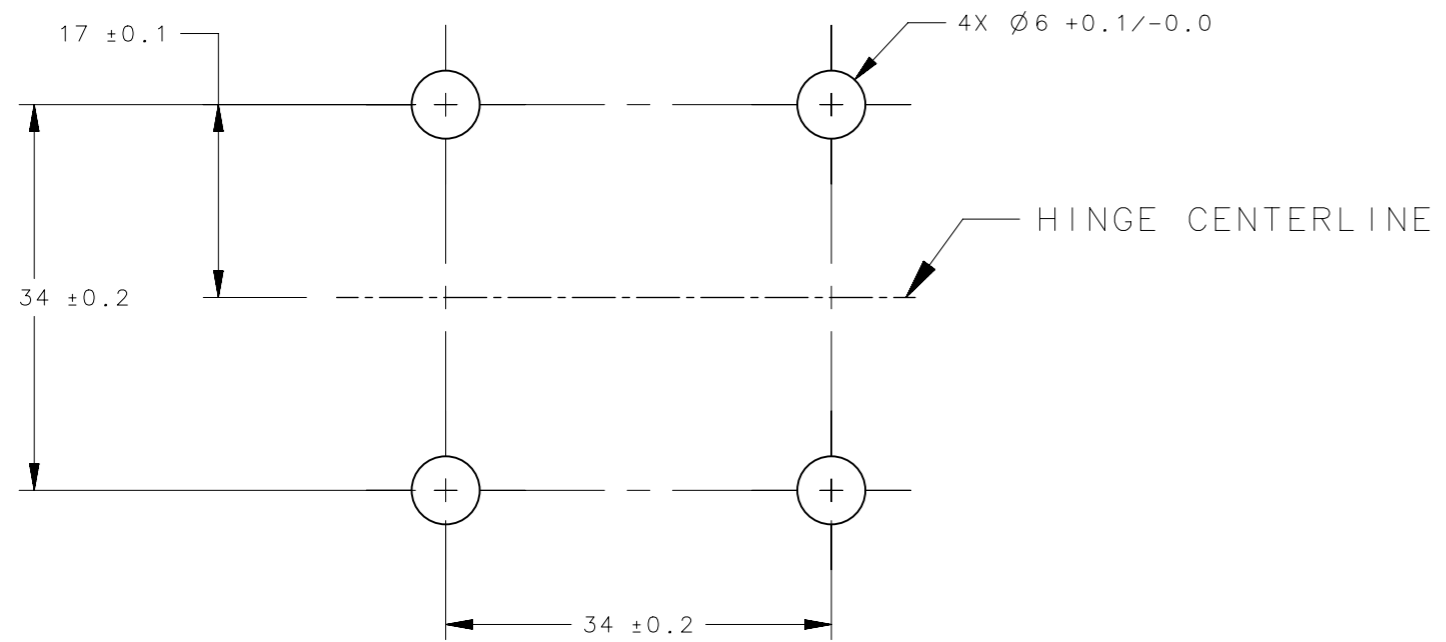
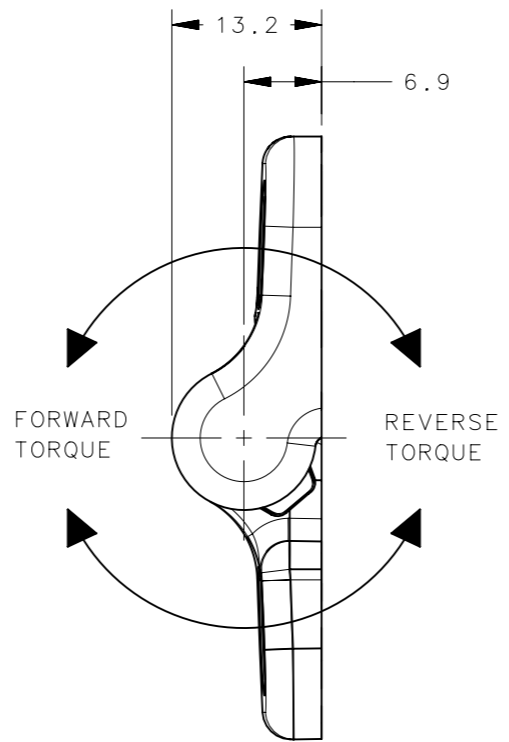
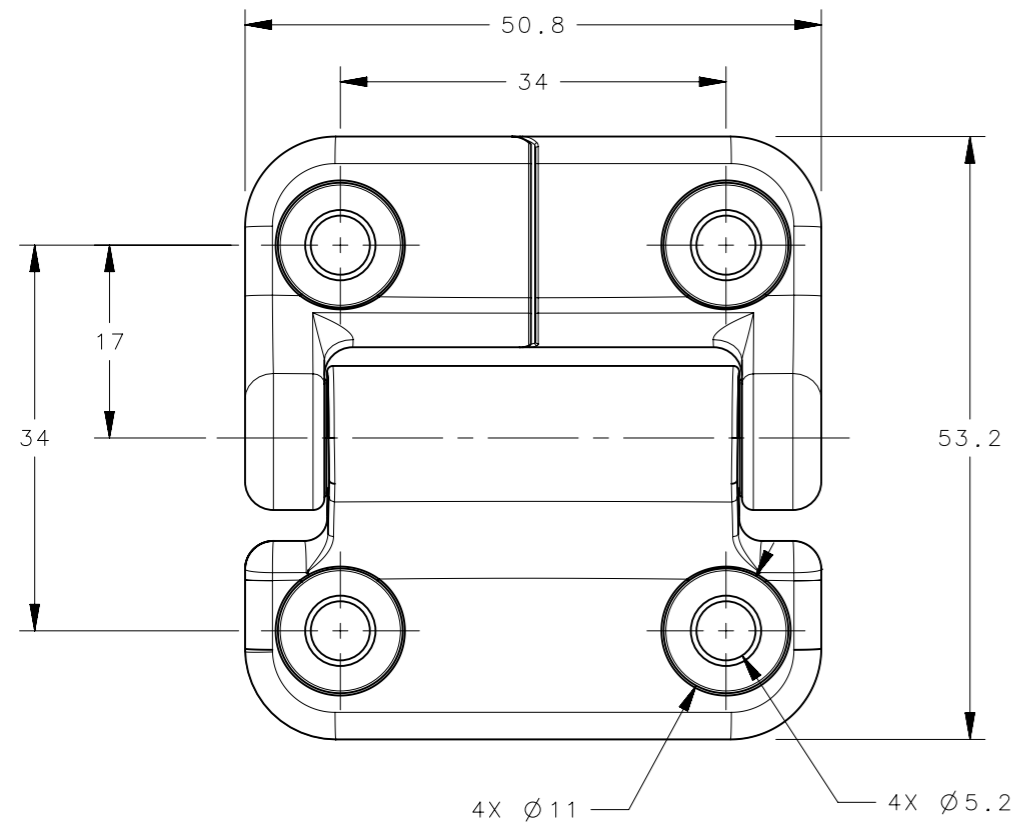
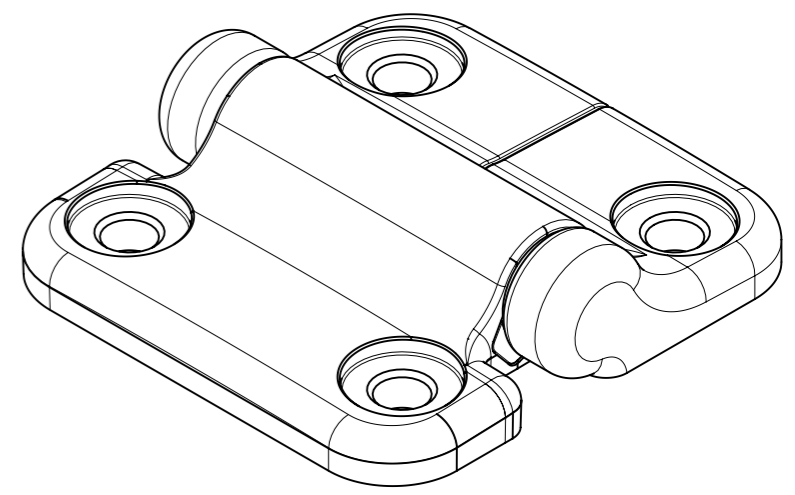


REVISION HISTORY			
REV	DATE	BY	DESCRIPTION
E	27JUN2024	ASC/VK	PRN: P2024-1131



PANEL PREPARATION



-XX	MATERIAL / FINISH
-6	SS(MIM)- BLACK PVD
-24	SS (MIM) - PASSIVATED
-85	SS (MIM) - HAND BUFFED

PART NUMBER	NOMINAL FORWARD TORQUE N-m (in-lbf)	NOMINAL REVERSE TORQUE N-m (in-lbf)	TORQUE TOLERANCE
E6-70-400-XX	0.00 (0.00) *	0.00 (0.00) *	*
E6-70-408S-XX	0.90 (8.0)	0.90 (8.0)	±30%
E6-70-416S-XX	1.81 (16.0)	1.81 (16.0)	±25%
E6-70-420S-XX	2.26 (20.0)	2.26 (20.0)	±20%
E6-70-430S-XX	3.39 (30.0)	3.39 (30.0)	±20%
E6-70-420F-XX	2.26 (20.0)	1.54 (13.6) *	±20%
E6-70-430F-XX	3.39 (30.0)	2.30 (20.4) *	±20%
E6-70-440F-XX	4.52 (40.0)	3.08 (27.3) *	±20%
E6-70-420R-XX	1.54 (13.6) *	2.26 (20.0)	±20%
E6-70-430R-XX	2.30 (20.4) *	3.39 (30.0)	±20%
E6-70-440R-XX	3.08 (27.3) *	4.52 (40.0)	±20%

- NOTES:
- DESIGNED TO ACCEPT M5 OR No. 10 SCREW OR EQUIVALENT
 - MATERIAL AND FINISH:
HINGE LEAVES: STAINLESS STEEL
SHAFT & PIN: STEEL
O-RINGS: BUNA-N RUBBER
BEARINGS: PLASTIC
 - RoHS COMPLIANT

THIRD ANGLE PROJECTION			
TOLERANCES UNLESS OTHERWISE NOTED	DESCRIPTION HINGE & CONTROLLED MOTION DEVICE E6-400 SERIES STAINLESS STEEL HINGE		
ALL DIMENSIONS WITHOUT TOLERANCES ARE FOR REFERENCE ONLY.	SIZE A3	SYSTEM NX	DWG NO. J-E6-70-400
PER ASME Y14.5M-2009	DRAWN BY JJT	DATE 16SEP2019	SCALE 1:1 SHEET 1 OF 1

PROPRIETARY ITEM
EXCEPT FOR USES EXPRESSLY GRANTED
IN WRITING, INFORMATION DISCLOSED
HEREON IS CONFIDENTIAL AND ALL
RIGHTS, PATENT AND OTHERWISE,
ARE RESERVED BY SOUTHCO, INC.