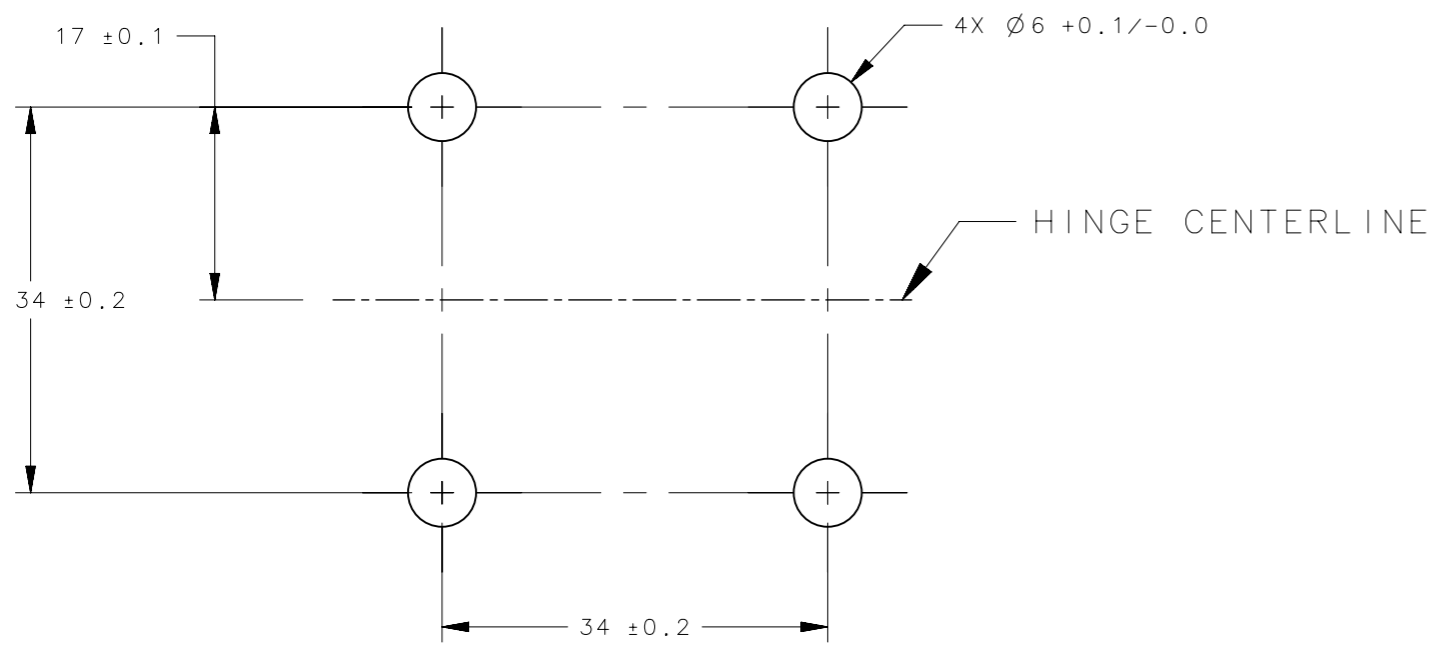
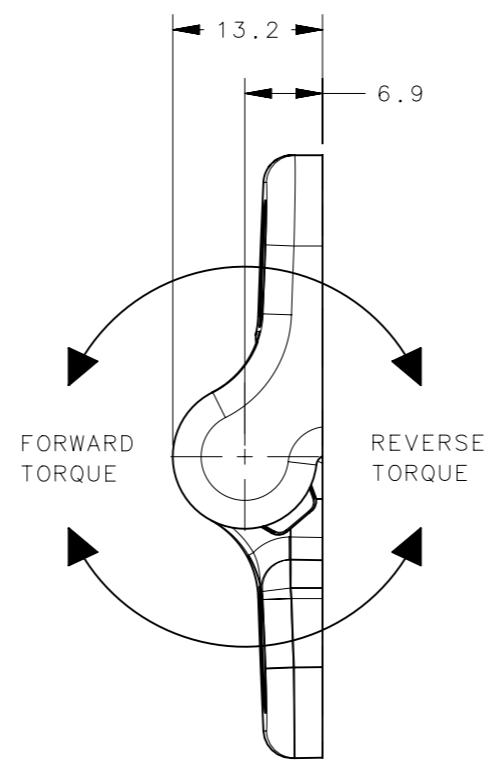
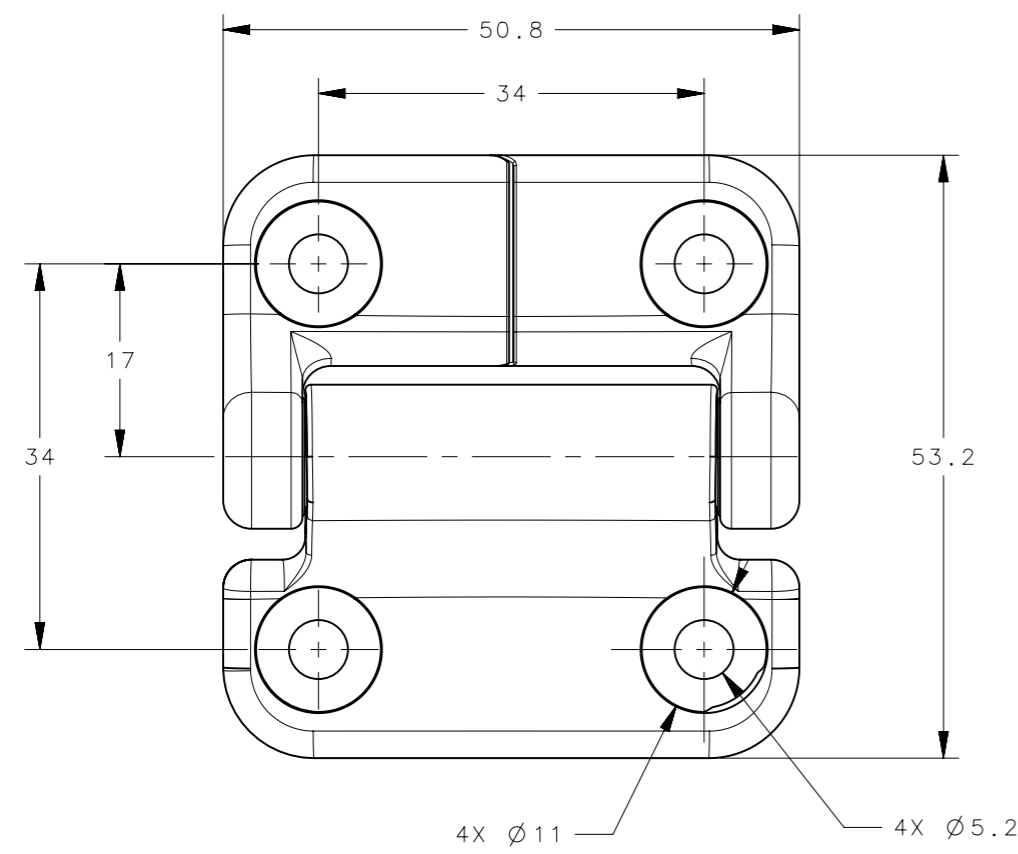
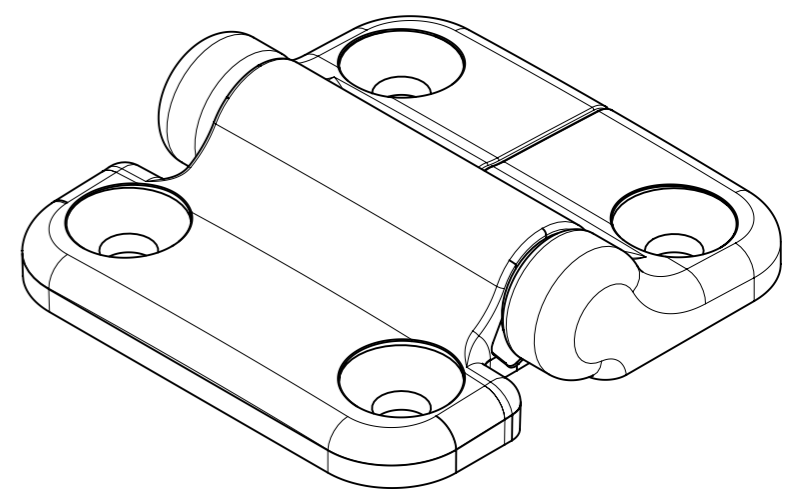


REVISION HISTORY			
REV	DATE	BY	DESCRIPTION
D	18SEP2024	ASC/VK	PRN: P2024-1599



PANEL PREPARATION



-XX	MATERIAL / FINISH
-6	SS (MIM) - BLACK PVD
-24	SS (MIM) - PASSIVATED
-85	SS (MIM) - HAND BUFFED

PART NUMBER	NOMINAL FORWARD TORQUE N-m (in-lbf)	NOMINAL REVERSE TORQUE N-m (in-lbf)
E6-71-400-XX	0.00 (0.00) *	0.00 (0.00) *
E6-71-408S-XX	0.90 (8.0)	0.90 (8.0)
E6-71-416S-XX	1.81 (16.0)	1.81 (16.0)
E6-71-420S-XX	2.26 (20.0)	2.26 (20.0)
E6-71-430S-XX	3.39 (30.0)	3.39 (30.0)
E6-71-420F-XX	2.26 (20.0)	1.54 (13.6) *
E6-71-430F-XX	3.39 (30.0)	2.30 (20.4) *
E6-71-440F-XX	4.52 (40.0)	3.08 (27.3) *
E6-71-420R-XX	1.54 (13.6) *	2.26 (20.0)
E6-71-430R-XX	2.30 (20.4) *	3.39 (30.0)
E6-71-440R-XX	3.08 (27.3) *	4.52 (40.0)

* REFERENCE ONLY

- NOTES:
- PERFORMANCE TORQUE TOLERANCE ±20% (OVER LIFE OF THE HINGE)
 - DESIGNED TO ACCEPT M5 OR No. 10 SCREW OR EQUIVALENT
 - MATERIAL AND FINISH:
HINGE LEAVES: STAINLESS STEEL
SHAFT & PIN: STEEL
O-RINGS: BUNA-N RUBBER
BEARINGS: PLASTIC
 - RoHS COMPLIANT

THIRD ANGLE PROJECTION				
MILLIMETERS [IN]	DESCRIPTION			HINGE & CONTROLLED MOTION DEVICE E6-400 SERIES STAINLESS STEEL HINGE, C'SUNK
TOLERANCES UNLESS OTHERWISE NOTED	SIZE	SYSTEM	DWG NO.	
ALL DIMENSIONS WITHOUT TOLERANCES ARE FOR REFERENCE ONLY.	A3	NX	J-E6-71-400	
PER ASME Y14.5M-2009	DRAWN BY	DATE	SCALE	SHEET
	JJT	13FEB2020	1:1	1 OF 1

PROPRIETARY ITEM
 EXCEPT FOR USES EXPRESSLY GRANTED IN WRITING, INFORMATION DISCLOSED HEREON IS CONFIDENTIAL AND ALL RIGHTS, PATENT AND OTHERWISE, ARE RESERVED BY SOUTHCO, INC.