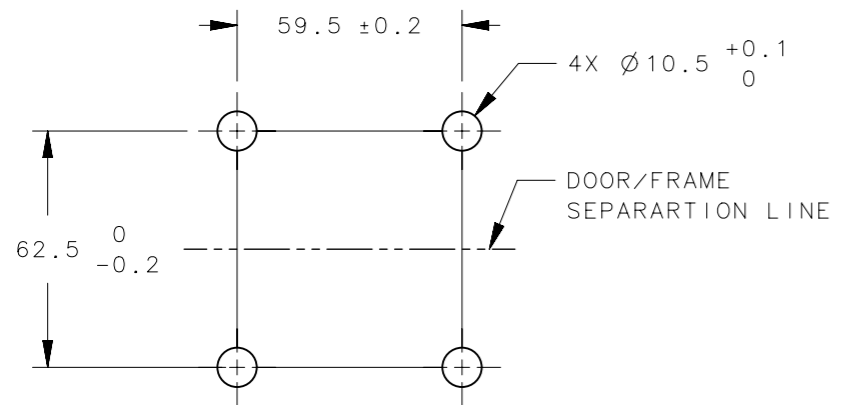
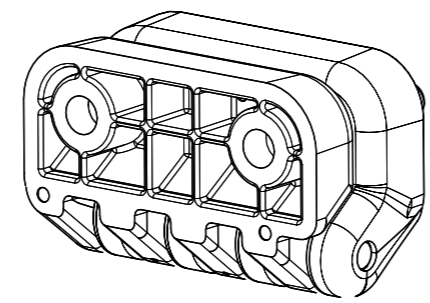
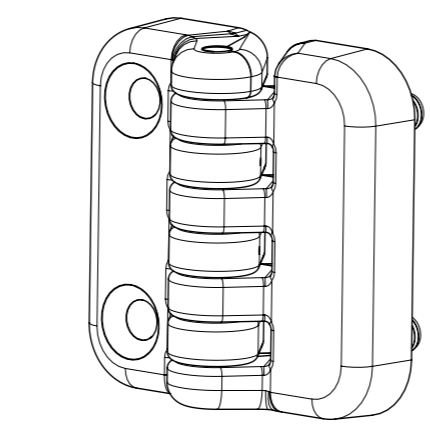


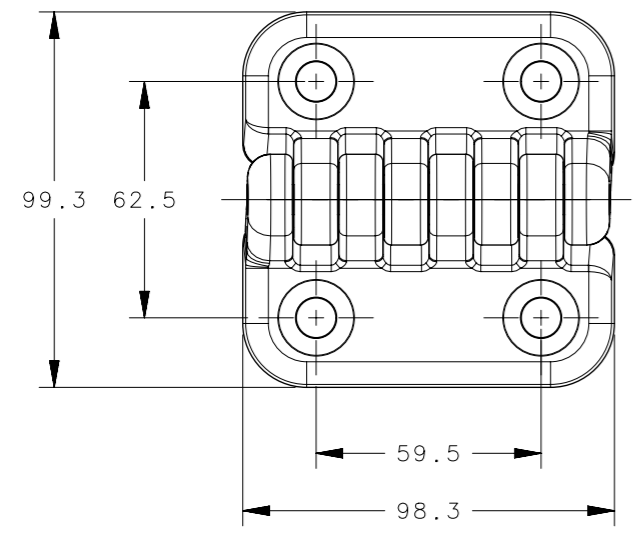
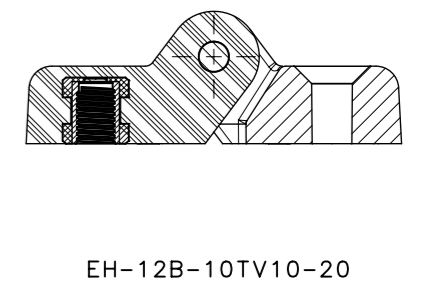
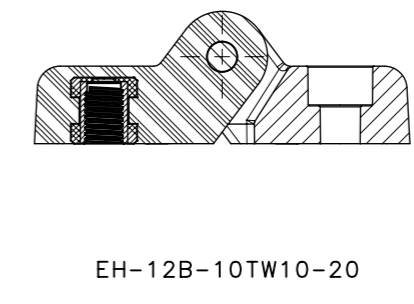
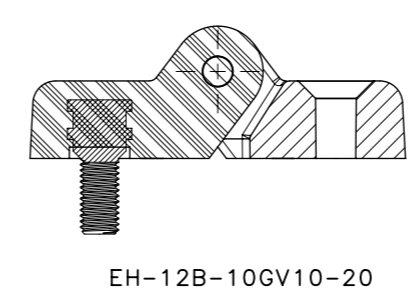
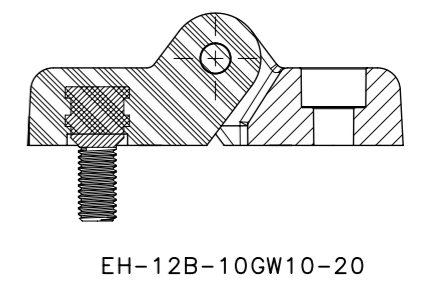
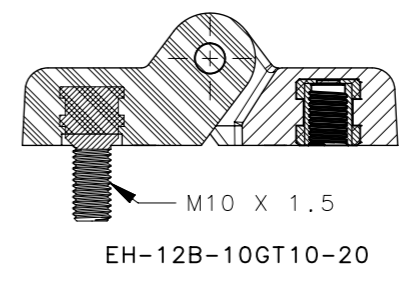
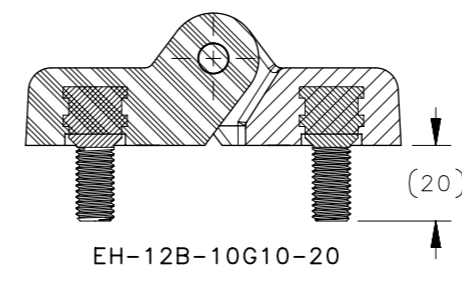
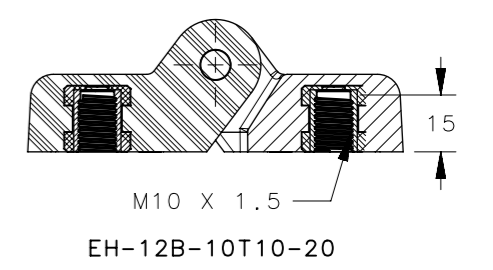
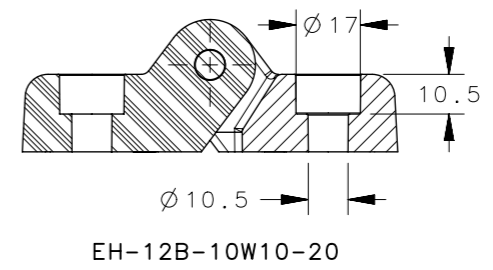
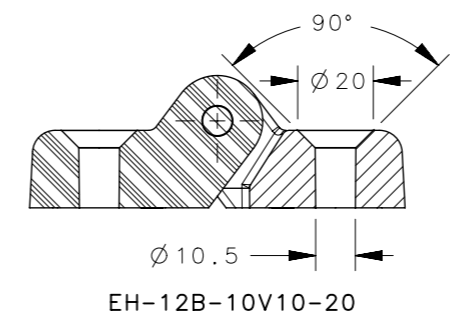
REVISION HISTORY			
REV	DATE	BY	DESCRIPTION
C	15SEP2022	VK/YGC	PRN: P2022-1619



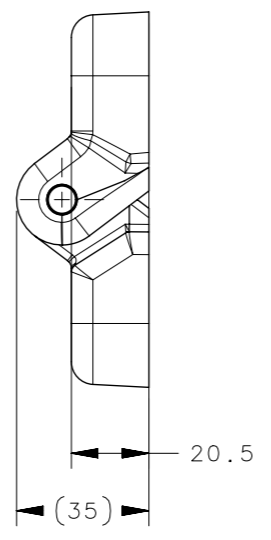
PANEL PREPARATION



SCALE 1:2
EH-12B-10GV10-20



PART NO. SHOWN: EH-12B-10V10-20



NOTES:

- MATERIAL AND FINISH:
HINGE LEAF- NYLON, BLACK
PIN- STAINLESS STEEL, PASSIVATED
INSERT NUT- STEEL, ZINC PLATED
INSERT STUD- STEEL, ZINC PLATED.
- INSTALLATION TORQUE OF SCREW FOR COUNTERSINK AND COUNTERBORE VERSION: 5 Nm MAX.
- INSTALLATION TORQUE OF NUT FOR INSERTED STUD VERSION: 5 Nm MAX.
- INSTALLATION TORQUE OF SCREW FOR INSERTED NUT VERSION: 5 Nm MAX.
- HARDWARE NOT SUPPLIED..

EH-12B-10TV10-20	HINGE ASSEMBLY(INSERT NUT + C/SINK)	SEE NOTE 1	SEE NOTE 1
EH-12B-10TW10-20	HINGE ASSEMBLY(INSERT NUT + C/BORE)		
EH-12B-10GV10-20	HINGE ASSEMBLY(INSERT STUD + C/SINK)		
EH-12B-10GW10-20	HINGE ASSEMBLY(INSERT STUD + C/BORE)		
EH-12B-10GT10-20	HINGE ASSEMBLY(INSERT STUD + INSERT NUT)		
EH-12B-10G10-20	HINGE ASSEMBLY(INSERT STUD + INSERT STUD)		
EH-12B-10T10-20	HINGE ASSEMBLY(INSERT NUT + INSERT NUT)		
EH-12B-10W10-20	HINGE ASSEMBLY(C/BORE + C/BORE)		
EH-12B-10V10-20	HINGE ASSEMBLY(C/SINK + C/SINK)		
PART NUMBER	DESCRIPTION		

CPB NUMBER 2019-0813	THIRD ANGLE PROJECTION		
SURFACE AREA	MILLIMETERS [IN]		
VOLUME	TOLERANCES UNLESS OTHERWISE NOTED	DESCRIPTION FREE SWINGING HINGE ASSEMBLY 100MM VARIANT	
PROPRIETARY ITEM <small>EXCEPT FOR USES EXPRESSLY GRANTED IN WRITING, INFORMATION DISCLOSED HEREON IS CONFIDENTIAL AND ALL RIGHTS, PATENT AND OTHERWISE, ARE RESERVED BY SOUTHCO, INC.</small>	ALL DIMENSIONS WITHOUT TOLERANCES ARE FOR REFERENCE ONLY.	SIZE A3	SYSTEM NX
PER ASME Y14.5M-1994	DRAWN BY VK	DATE 20NOV2019	SCALE 1:2
		DWG NO. J-EH-12B-10-20	SHEET 1 OF 1