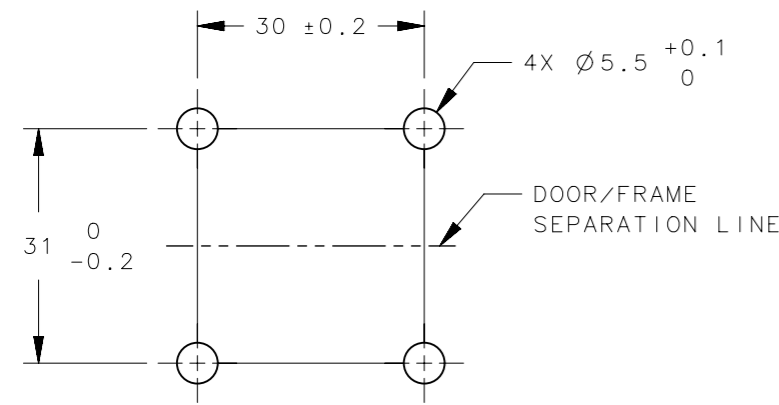
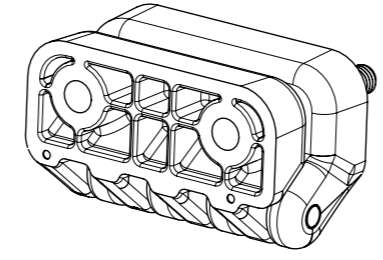
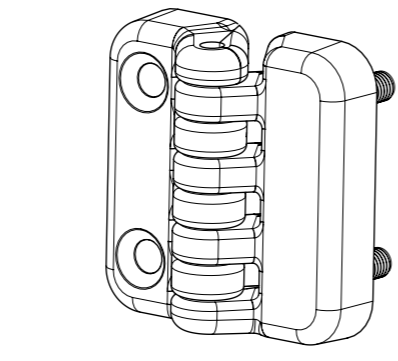


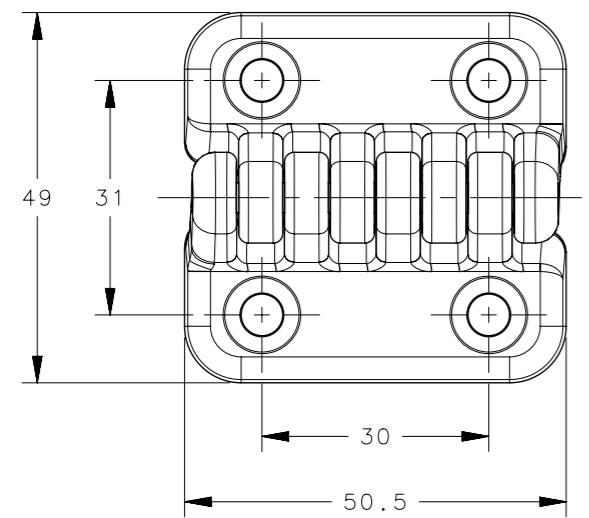
| REVISION HISTORY |           |        |                 |
|------------------|-----------|--------|-----------------|
| REV              | DATE      | BY     | DESCRIPTION     |
| C                | 15SEP2022 | VK/YGC | PRN: P2022-1619 |



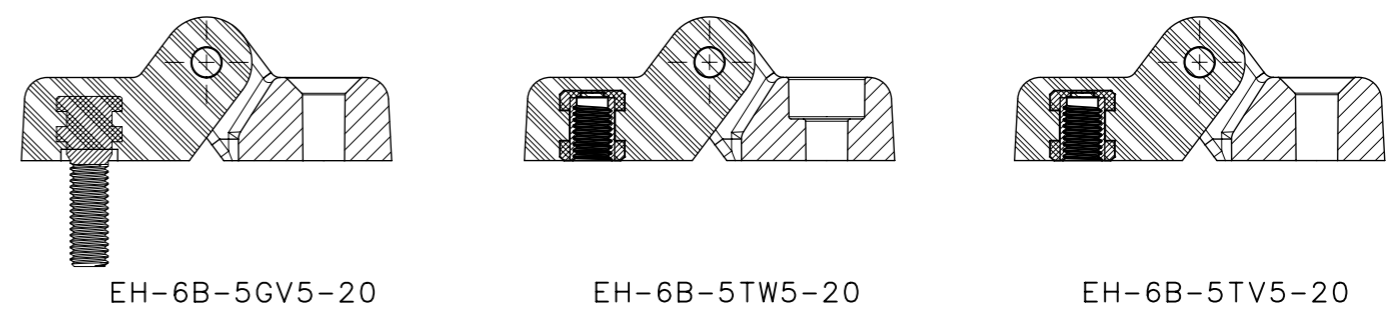
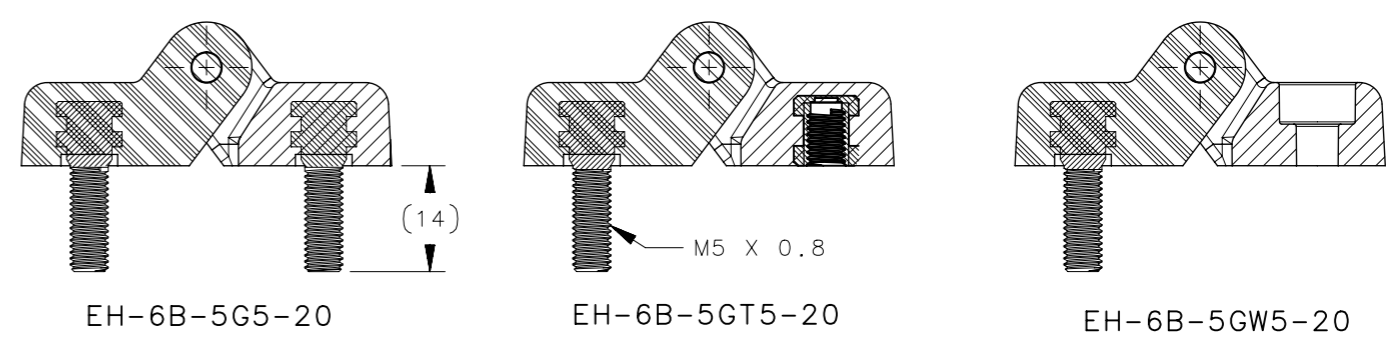
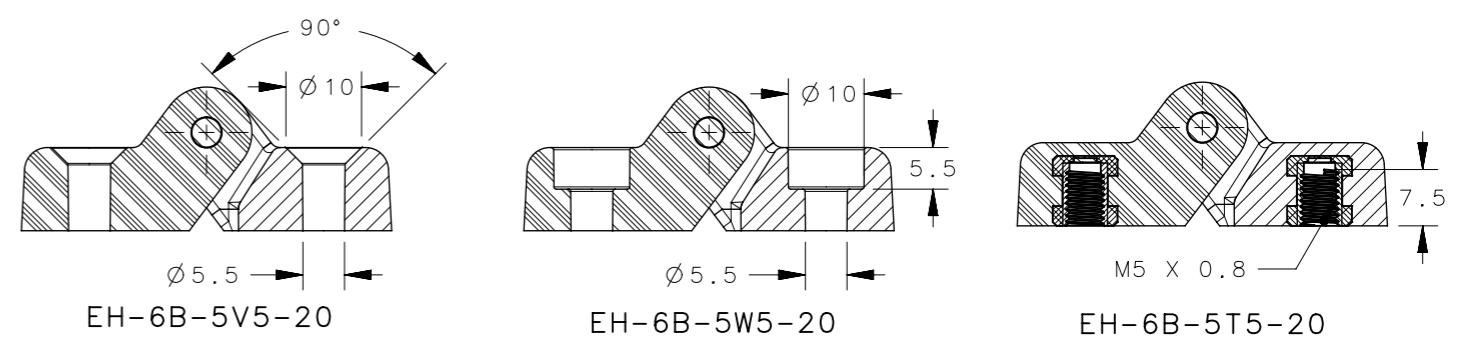
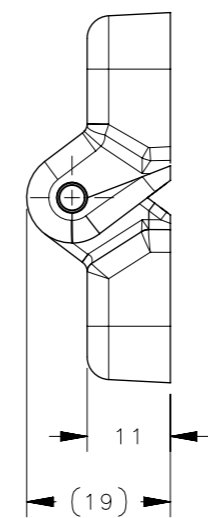
PANEL PREPARATION



SCALE 4:5  
EH-6B-5GV5-20



PART NO. SHOWN: EH-6B-5V5-20



| PART NUMBER   | DESCRIPTION                                | MATERIAL   | FINISH     |
|---------------|--|------------|------------|
| EH-6B-5TV5-20 | HINGE ASSEMBLY( INSERT NUT + C/SINK)       |            |            |
| EH-6B-5TW5-20 | HINGE ASSEMBLY( INSERT NUT + C/BORE)       |            |            |
| EH-6B-5GV5-20 | HINGE ASSEMBLY( INSERT STUD + C/SINK)      |            |            |
| EH-6B-5GW5-20 | HINGE ASSEMBLY( INSERT STUD + C/BORE)      |            |            |
| EH-6B-5GT5-20 | HINGE ASSEMBLY( INSERT STUD + INSERT NUT)  | SEE NOTE 1 | SEE NOTE 1 |
| EH-6B-5G5-20  | HINGE ASSEMBLY( INSERT STUD + INSERT STUD) |            |            |
| EH-6B-5T5-20  | HINGE ASSEMBLY( INSERT NUT + INSERT NUT)   |            |            |
| EH-6B-5W5-20  | HINGE ASSEMBLY( C/BORE + C/BORE)           |            |            |
| EH-6B-5V5-20  | HINGE ASSEMBLY( C/SINK + C/SINK)           |            |            |

- NOTES:
- MATERIAL AND FINISH:  
HINGE LEAF- NYLON, BLACK  
PIN- STAINLESS STEEL, PASSIVATED  
INSERT NUT- STEEL, ZINC PLATED  
INSERT STUD- STEEL, ZINC PLATED.
  - INSTALLATION TORQUE OF SCREW FOR COUNTERSINK AND COUNTERBORE VERSION: 2 Nm MAX.
  - INSTALLATION TORQUE OF NUT FOR INSERTED STUD VERSION: 5 Nm MAX.
  - INSTALLATION TORQUE OF SCREW FOR INSERTED NUT VERSION: 5 Nm MAX.
  - HARDWARE NOT SUPPLIED.

|   |   |   |                 |
|---|---|---|-----------------|
| CPB NUMBER<br>2019-0813   | THIRD ANGLE PROJECTION                                    |   |                 |
| SURFACE AREA  | MILLIMETERS [IN]  |   |                 |
| VOLUME  | TOLERANCES UNLESS OTHERWISE NOTED                         | DESCRIPTION<br><b>FREE SWINGING HINGE ASSEMBLY<br/>50MM VARIANT</b> |                 |
| PROPRIETARY ITEM<br><small>EXCEPT FOR USES EXPRESSLY GRANTED IN WRITING, INFORMATION DISCLOSED HEREON IS CONFIDENTIAL AND ALL RIGHTS, PATENT AND OTHERWISE, ARE RESERVED BY SOUTHCO, INC.</small> | ALL DIMENSIONS WITHOUT TOLERANCES ARE FOR REFERENCE ONLY. | SIZE<br>A3  | SYSTEM<br>NX    |
| PER ASME Y14.5M-1994  | DRAWN BY<br>VK  | DATE<br>19NOV2019   | SCALE<br>1:1    |
|   |   | DWG NO.<br>J-EH-6B-5-20   | SHEET<br>1 OF 1 |