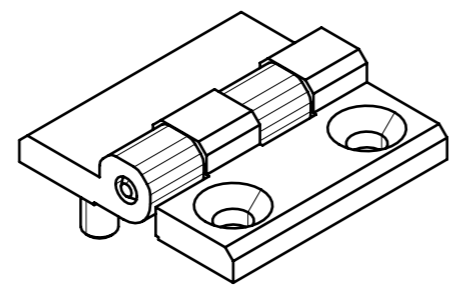
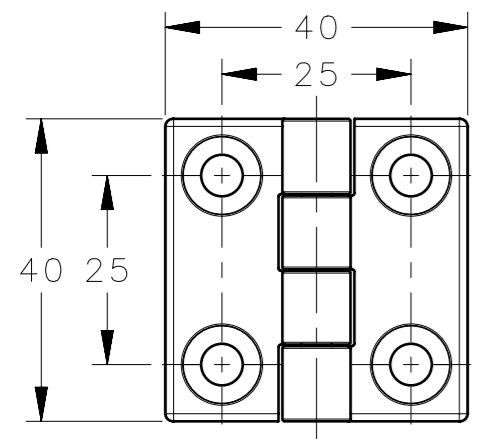
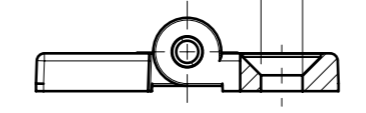


REVISION HISTORY			
REV	DATE	BY	DESCRIPTION
A	21AUG2024	SBK/VK	IPN: IP-2024-2045



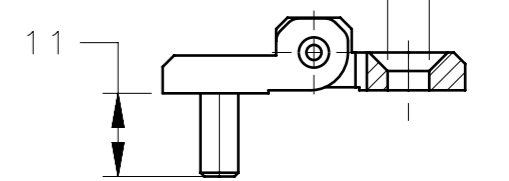
SHOWN PART NO
EH-DHFM-40-SH

4X Ø 5.5
(CSK HOLES)

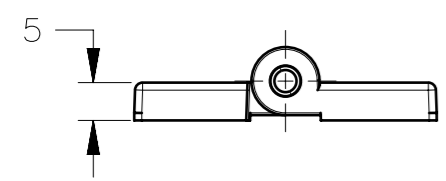


EH-DHFM-40

2X Ø 5.5
(CSK HOLES)

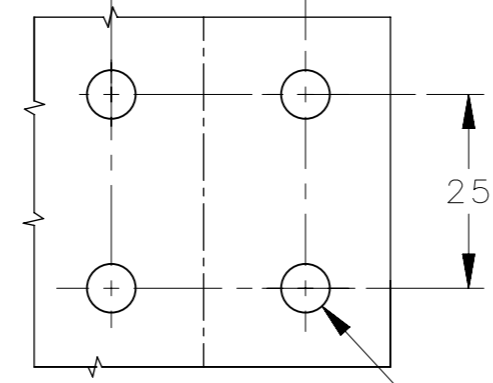


EH-DHFM-40-SH

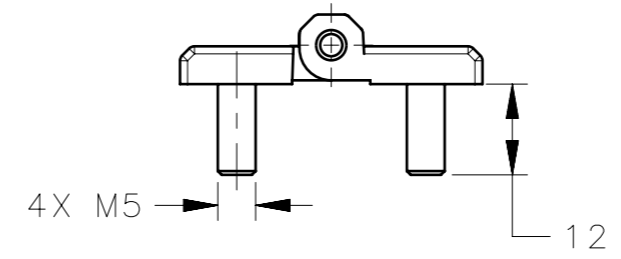


SHOWN PART NO
EH-DHFM-40

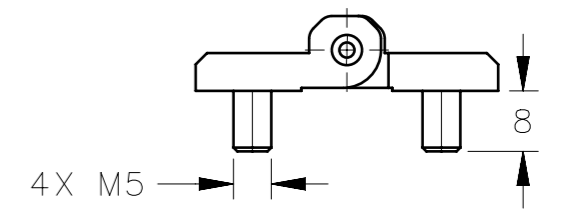
25 ± 0.1



PANEL PREPRATION



EH-DHFM-40S



EH-DHFM-40S-8

- NOTES:-
1. MOUNTING SCREWS NOT SUPPLIED.
 2. OPENING ANGLE 180°.

EH-DHFM-40	FLAT HINGE , (CSK HOLE + CSK HOLE)	ZINC DIE CAST	BLACK POWDER COATED
EH-DHFM-40-SH	FLAT HINGE , (STUD + CSK HOLE)	ZINC DIE CAST	BLACK POWDER COATED
EH-DHFM-40S	FLAT HINGE , (STUD + STUD)	ZINC DIE CAST	BLACK POWDER COATED
EH-DHFM-40S-8	FLAT HINGE , (STUD + STUD)	ZINC DIE CAST	BLACK POWDER COATED
SOUTHCO PART NUMBER	DESCRIPTION	MATERIAL	FINISH

CPB NUMBER 2024-0676	THIRD ANGLE PROJECTION	 CONNECT · CREATE · INNOVATE		
SURFACE AREA mm ²	MILLIMETERS [IN]			
VOLUME mm ³	TOLERANCES UNLESS OTHERWISE NOTED	DESCRIPTION FLAT HINGE		
PROPRIETARY ITEM <small>EXCEPT FOR USES EXPRESSLY GRANTED IN WRITING, INFORMATION DISCLOSED HEREON IS CONFIDENTIAL AND ALL RIGHTS, PATENT AND OTHERWISE, ARE RESERVED BY SOUTHCO, INC.</small>	ALL DIMENSIONS WITHOUT TOLERANCES ARE FOR REFERENCE ONLY.	SIZE A3	SYSTEM NX	DWG NO. J-EH-DHFM-40
PER ASME Y14.5M-2009		DRAWN BY SBK	DATE 23JUL2024	SCALE 1:1
				SHEET 1 OF 1