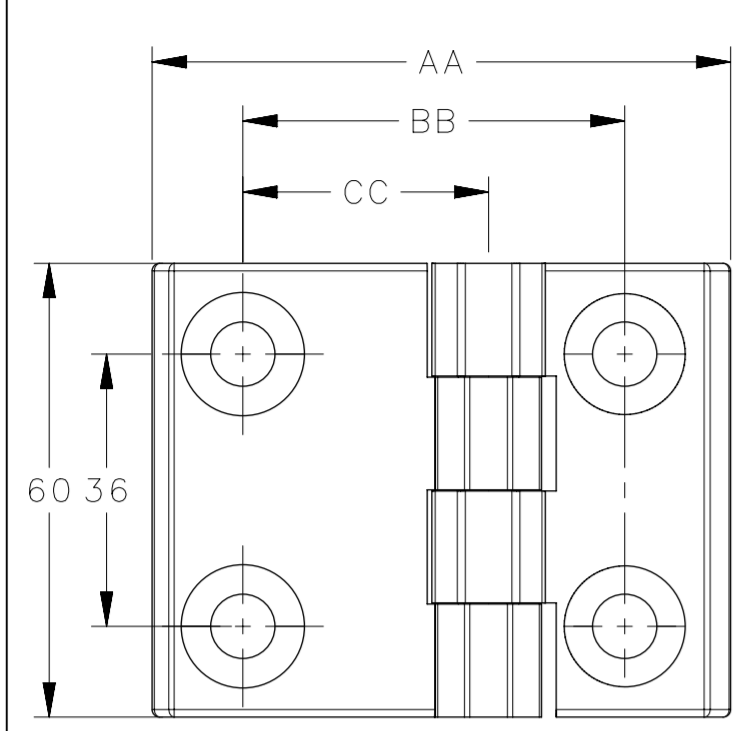
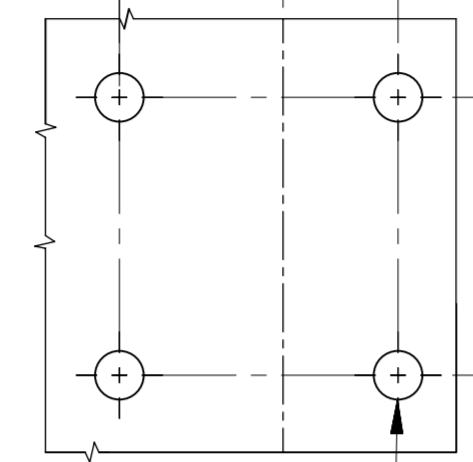


REVISION HISTORY			
REV	DATE	BY	DESCRIPTION
A	29AUG2024	SBK/VK	IPN: 1P-2024-2045



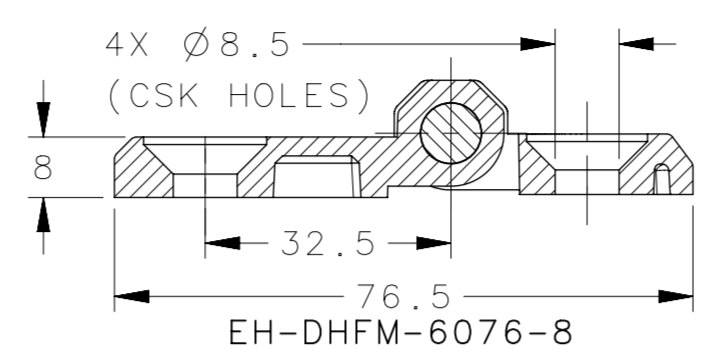
BB ±0.1
CC ±0.1



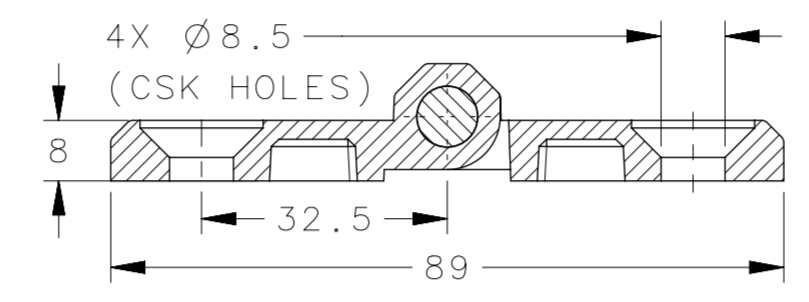
4X Ø8.5 ±0.1

PANEL PREPRATION

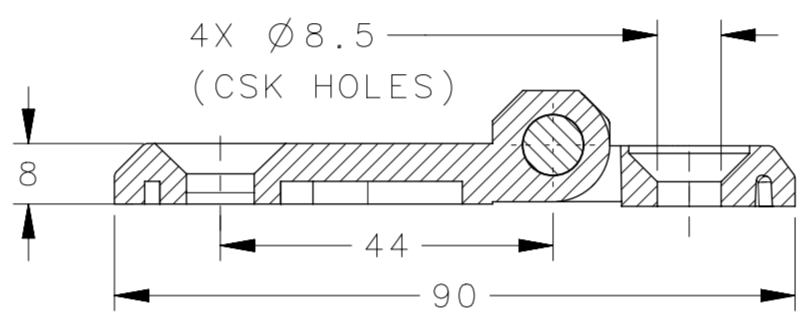
SHOWN PART NO
EH-DHFM-6076-8



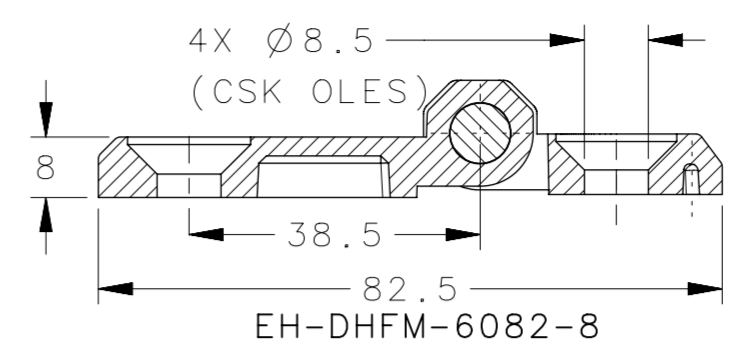
EH-DHFM-6076-8



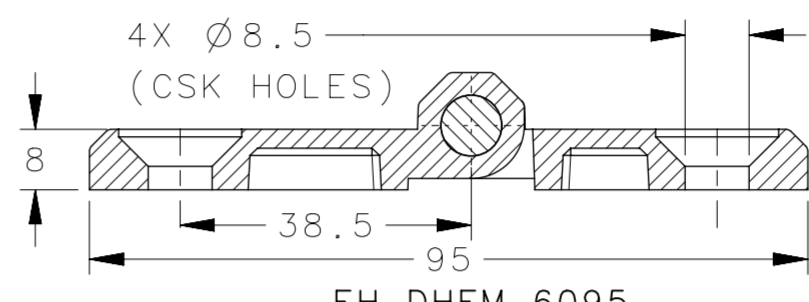
EH-DHFM-6089



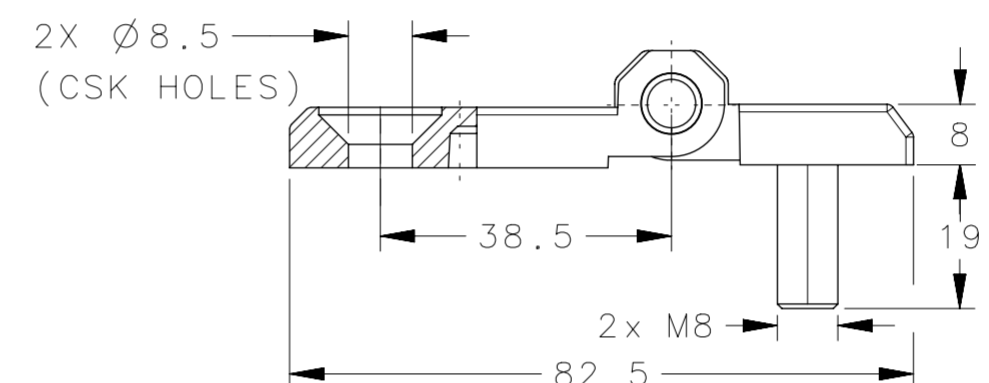
EH-DHFM-6090-2H



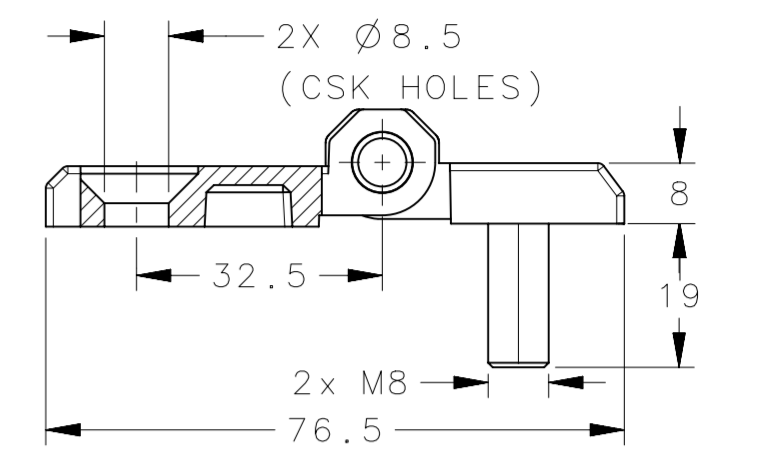
EH-DHFM-6082-8



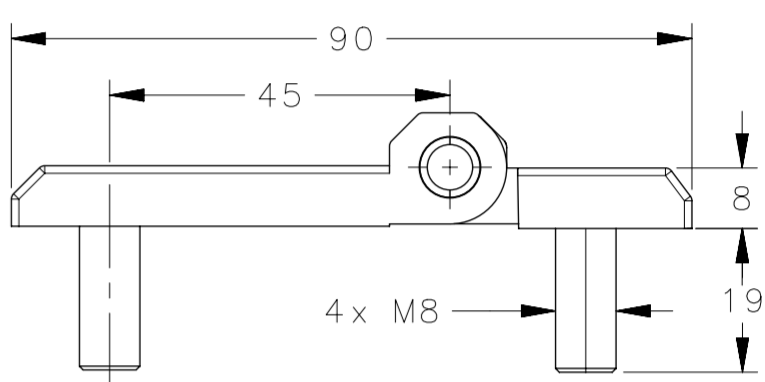
EH-DHFM-6095



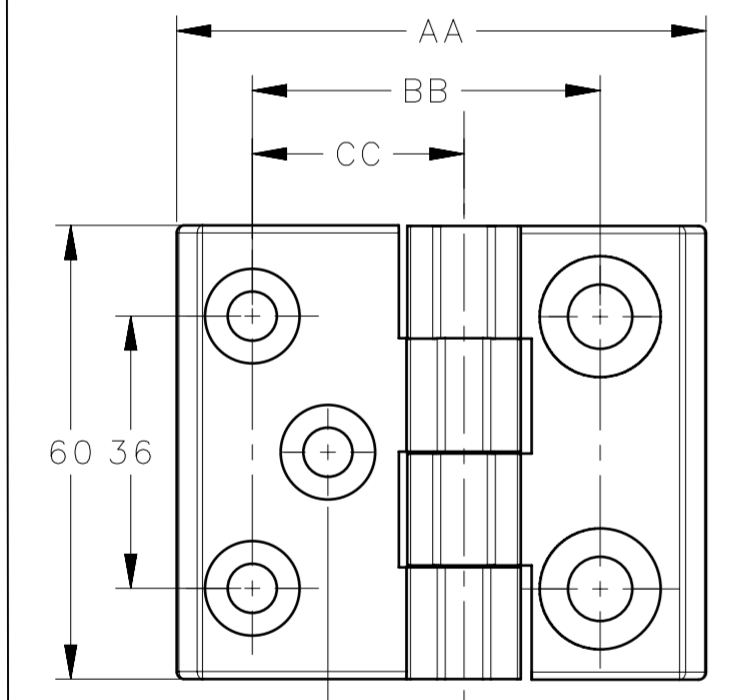
EH-DHFM-6082-8-SH



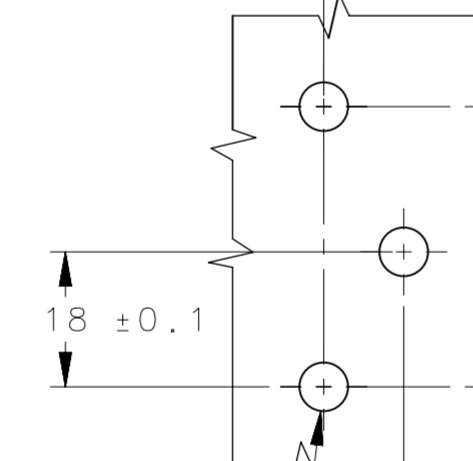
EH-DHFM-6076-8-SH



EH-DHFM-6090-S



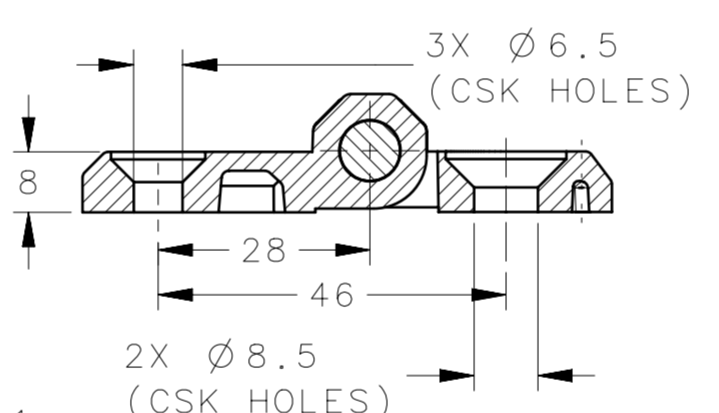
BB ±0.1
CC ±0.1



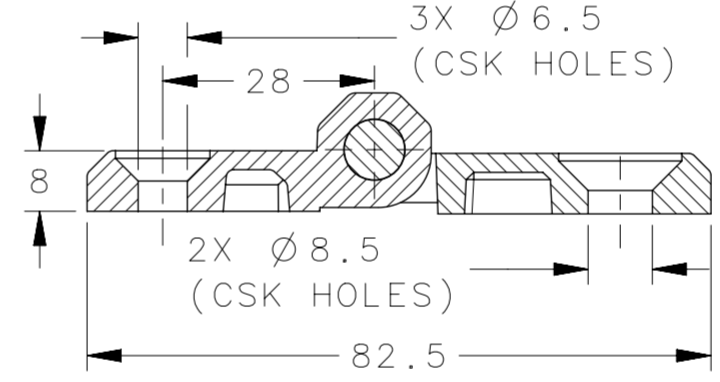
3X Ø6.5 ±0.1 (FOR M6)
Ø8.5 ±0.1 (FOR M8)

PANEL PREPRATION

SHOWN PART NO
EH-DHFM-6070

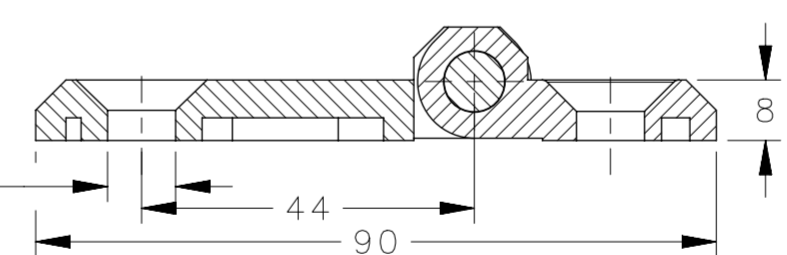


EH-DHFM-6070

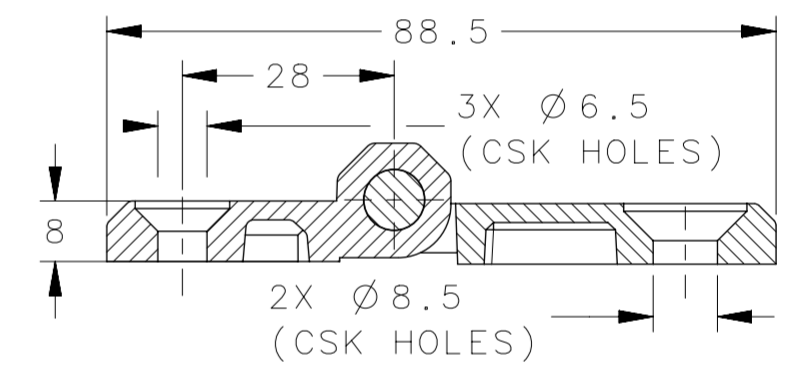


EH-DHFM-6082-8-3H

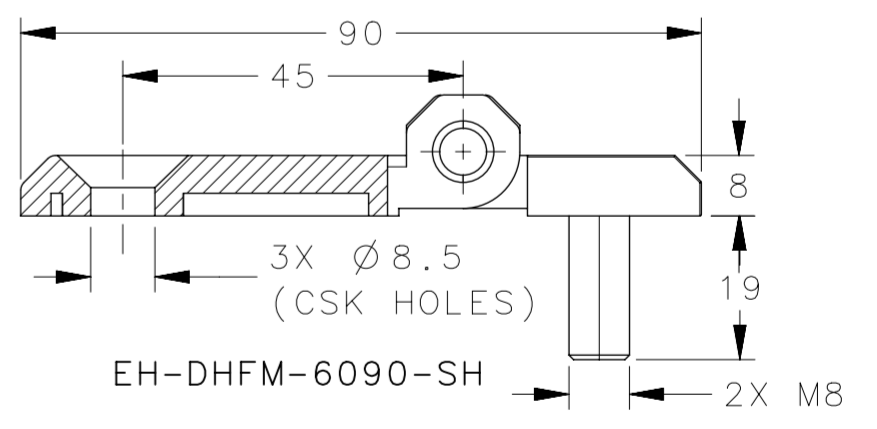
5X Ø8.5 (CSK HOLES)



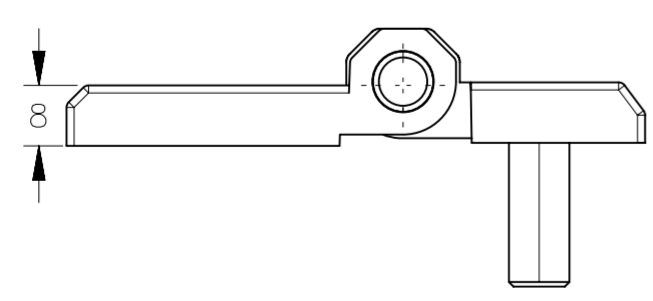
EH-DHFM-6090



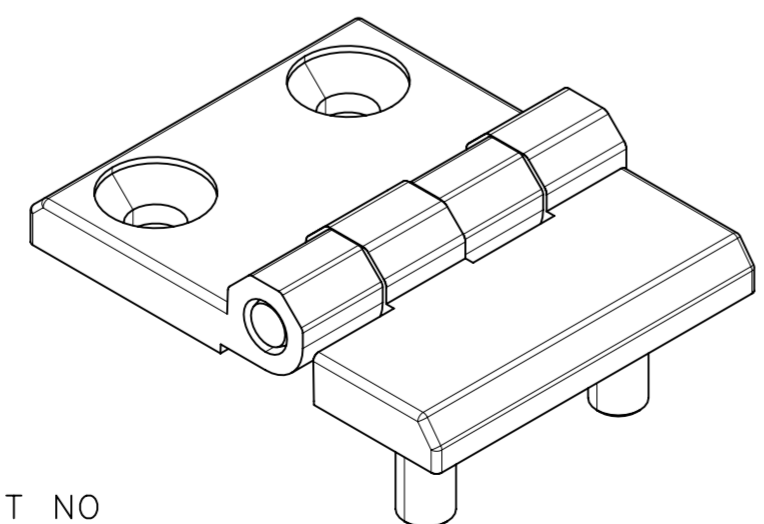
EH-DHFM-6088-8-3H



EH-DHFM-6090-SH



SHOWN PART NO
EH-DHFM-6076-8-SH



SHOWN PART NO
EH-DHFM-6090-SH

- NOTES:-
1. MOUNTING SCREWS NOT SUPPLIED.
 2. OPENING ANGLE 180°.

PART NUMBER	DESCRIPTION	MATERIAL	FINISH	AA	BB	CC	DD	
EH-DHFM-6076-8	FLAT HINGE, (CSK HOLE + CSK HOLE)	ZINC DIE CAST	BLACK POWDER COATED	76.5	50.5	32.5	-	
EH-DHFM-6089	FLAT HINGE, (CSK HOLE + CSK HOLE)	ZINC DIE CAST	BLACK POWDER COATED	89	65	32.5	-	
EH-DHFM-6090-2H	FLAT HINGE, (CSK HOLE + CSK HOLE)	ZINC DIE CAST	BLACK POWDER COATED	90	62	44	-	
EH-DHFM-6082-8	FLAT HINGE, (CSK HOLE + CSK HOLE)	ZINC DIE CAST	BLACK POWDER COATED	82.5	56.5	38.5	-	
EH-DHFM-6095	FLAT HINGE, (CSK HOLE + CSK HOLE)	ZINC DIE CAST	BLACK POWDER COATED	95	71	38.5	-	
EH-DHFM-6082-8-SH	FLAT HINGE, (CSK HOLE + STUD)	ZINC DIE CAST	BLACK POWDER COATED	82.5	56.5	38.5	-	
EH-DHFM-6076-8-SH	FLAT HINGE, (CSK HOLE + STUD)	ZINC DIE CAST	BLACK POWDER COATED	76.5	50.5	32.5	-	
EH-DHFM-6090-S	FLAT HINGE, (STUD + STUD)	ZINC DIE CAST	BLACK POWDER COATED	90	63	45	-	
EH-DHFM-6070	FLAT HINGE, (3 CSK HOLE + CSK HOLE)	ZINC DIE CAST	BLACK POWDER COATED	70	46	28	18	
EH-DHFM-6082-8-3H	FLAT HINGE, (3 CSK HOLE + CSK HOLE)	ZINC DIE CAST	BLACK POWDER COATED	82.5	60.5	28	18	
EH-DHFM-6090	FLAT HINGE, (3 CSK HOLE + CSK HOLE)	ZINC DIE CAST	BLACK POWDER COATED	90	62	44	25	
EH-DHFM-6088-8-3H	FLAT HINGE, (3 CSK HOLE + CSK HOLE)	ZINC DIE CAST	BLACK POWDER COATED	88.5	66.5	28	18	
EH-DHFM-6090-SH	FLAT HINGE, (3 CSK HOLE + STUD)	ZINC DIE CAST	BLACK POWDER COATED	90	63	45	25	
SOUTHCO PART NUMBER		DESCRIPTION	MATERIAL	FINISH	AA	BB	CC	DD
CPB NUMBER	2024-0677	THIRD ANGLE PROJECTION						
		MILLIMETERS [IN]						
SURFACE AREA		TOLERANCES UNLESS OTHERWISE NOTED		DESCRIPTION				
VOLUME		ALL DIMENSIONS WITHOUT TOLERANCES ARE FOR REFERENCE ONLY.		FLAT HINGE				
PROPRIETARY ITEM		SIZE	SYSTEM	DWG NO.		SHEET		
EXCEPT FOR USES EXPRESSLY GRANTED IN WRITING, INFORMATION DISCLOSED HEREIN IS CONFIDENTIAL AND ALL RIGHTS, PATENT AND OTHERWISE, ARE RESERVED BY SOUTHCO, INC.		A2	NX	J-EH-DHFM-6		1 OF 1		
PER ASME Y14.5M-2009		DRAWN BY	DATE	SCALE	SHEET			
		SBK	25 JULY 2024	1:1	1 OF 1			