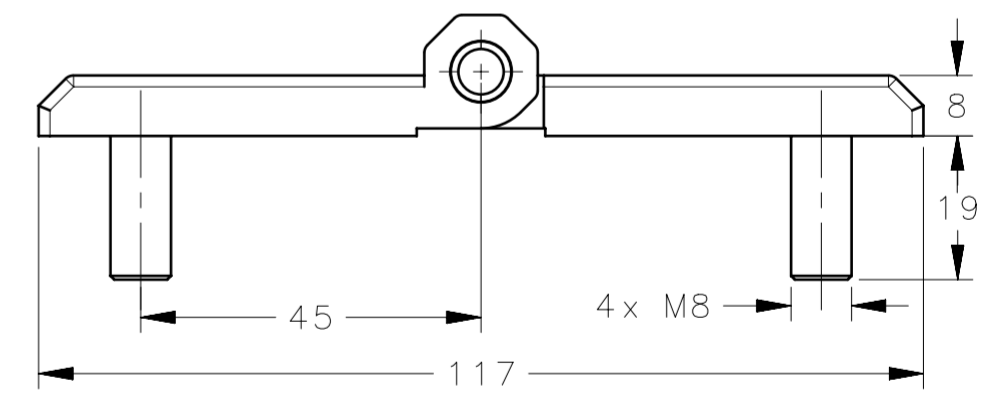
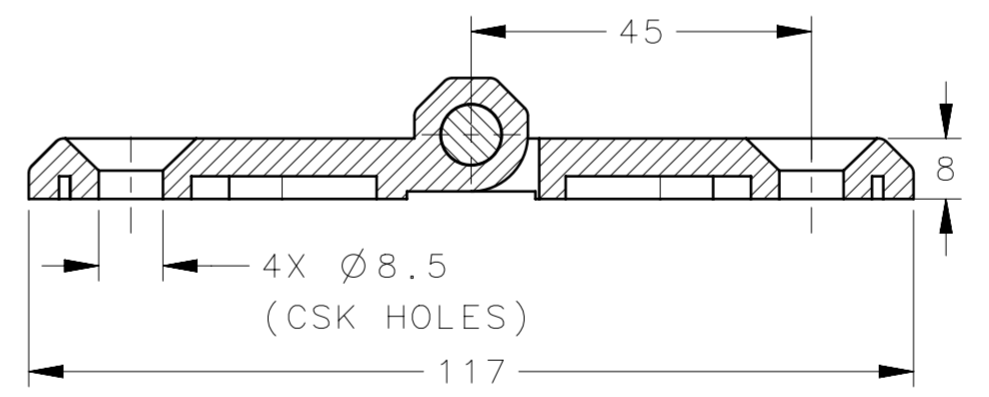
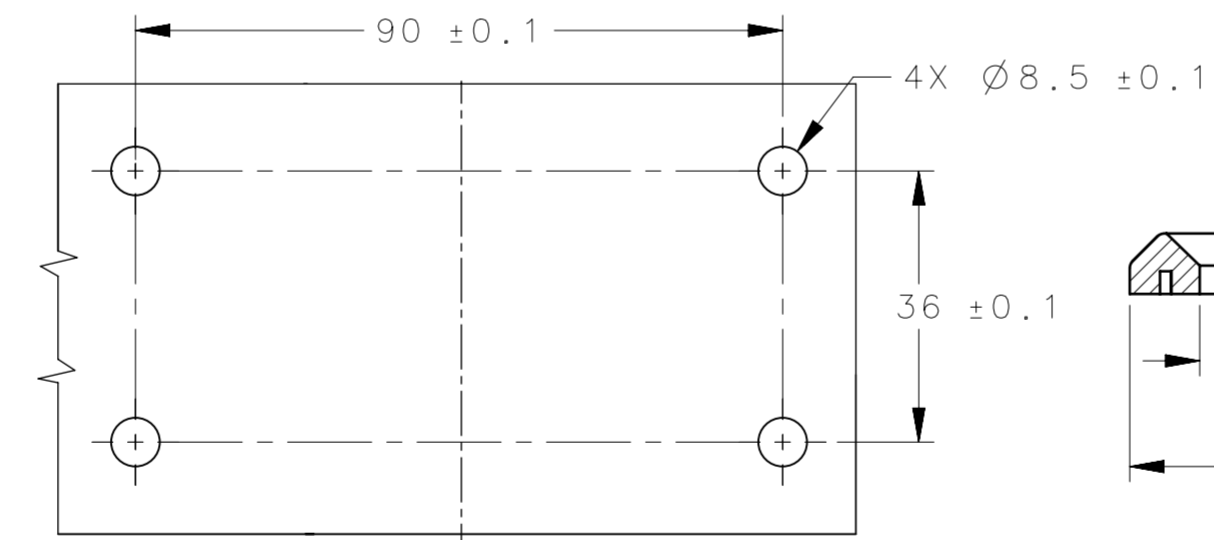
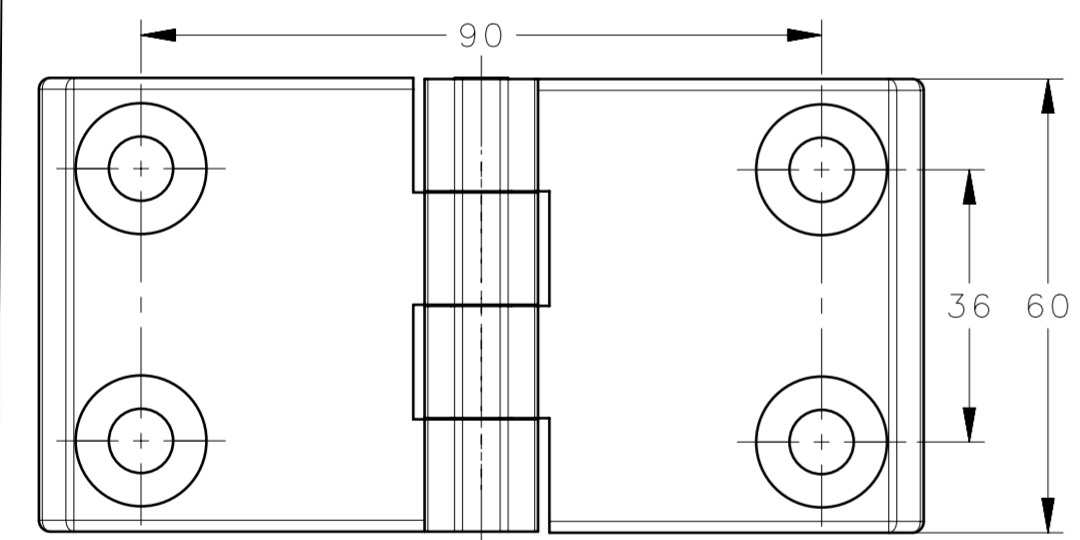
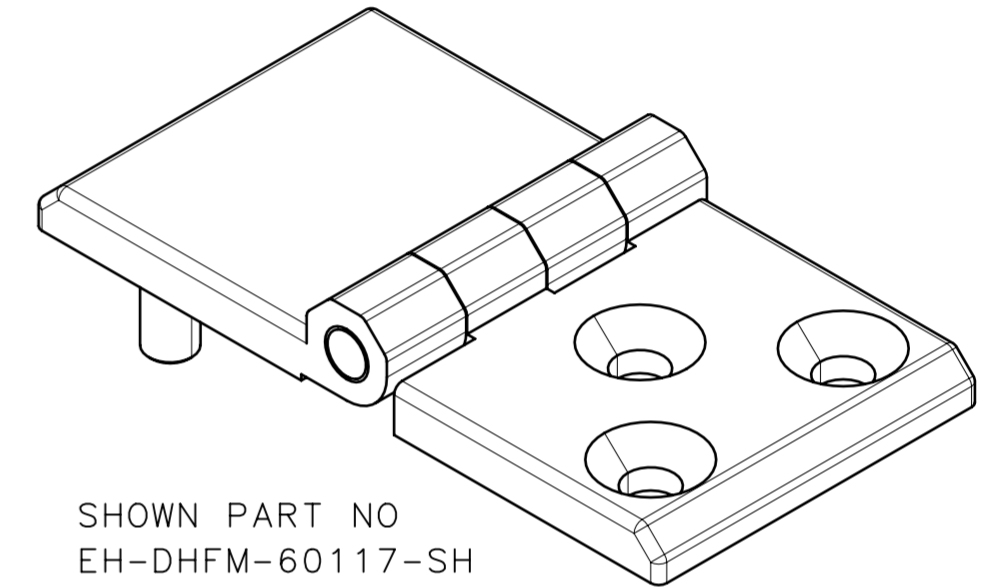
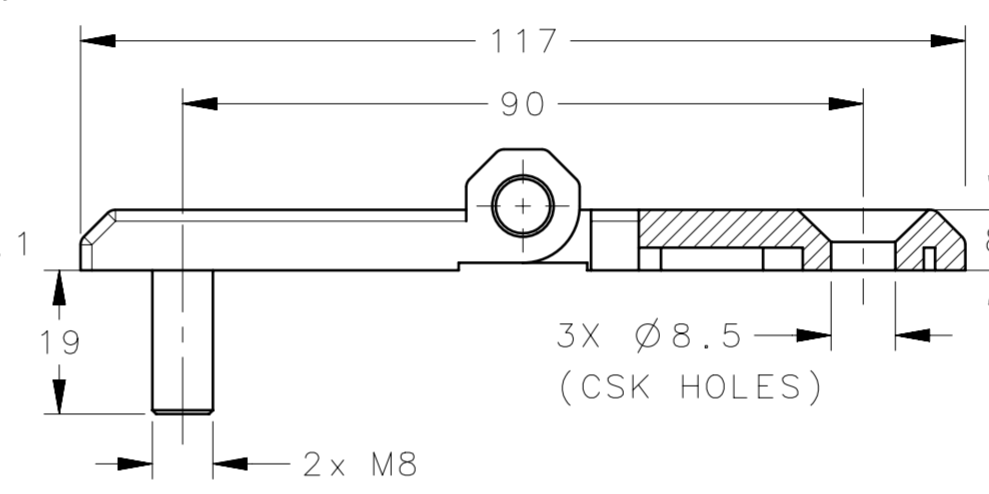
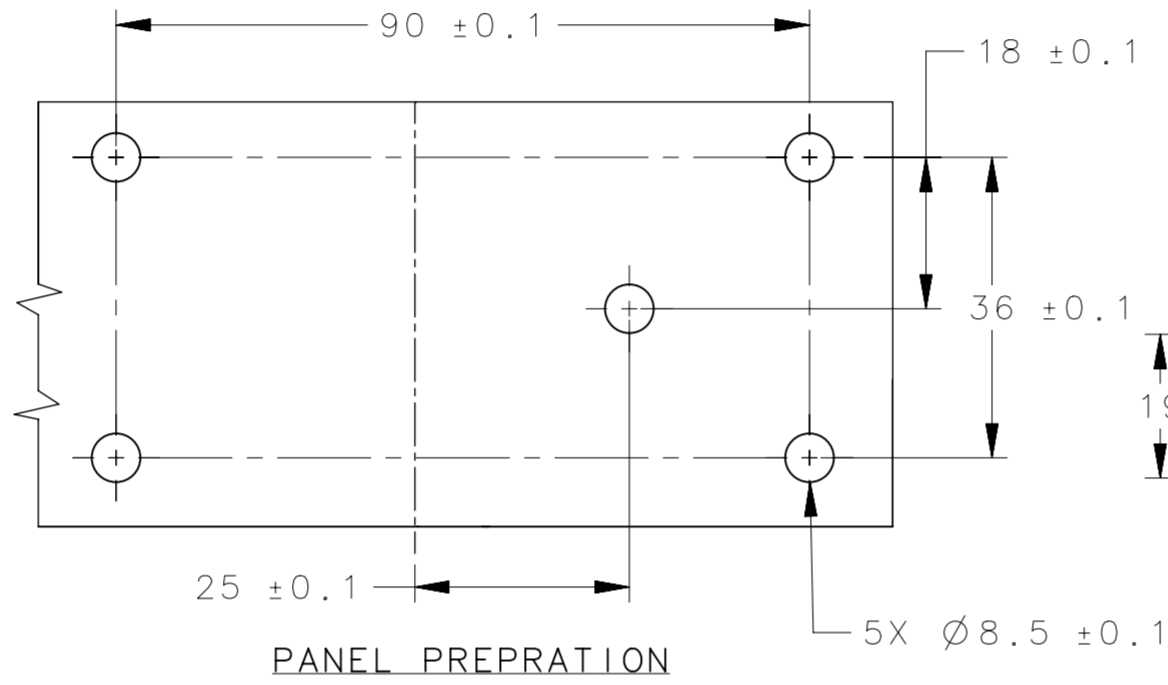
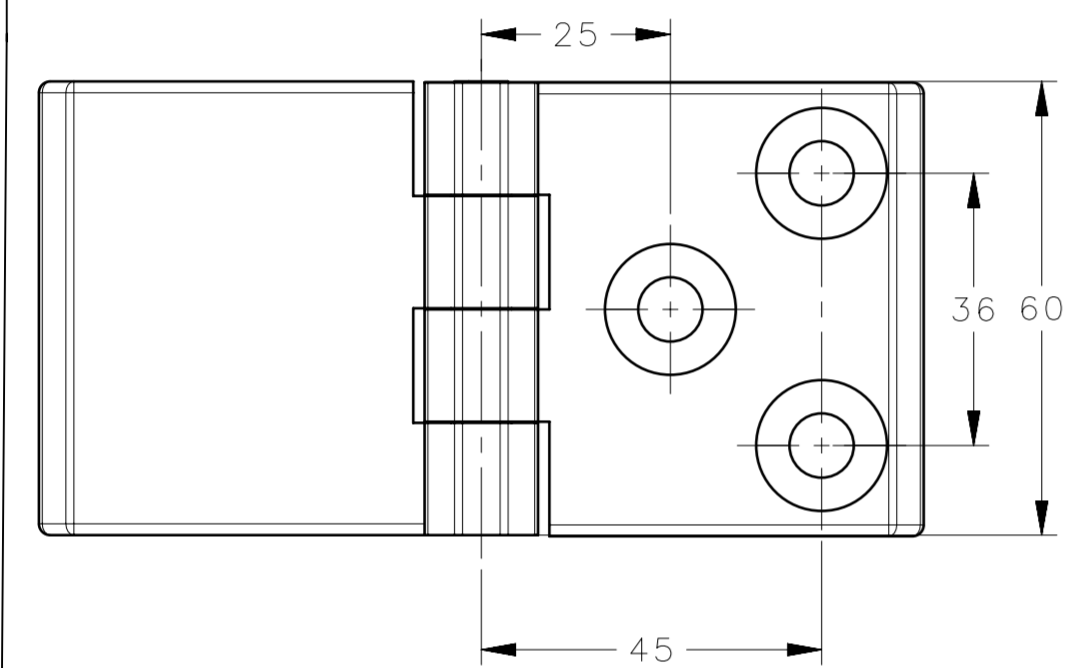
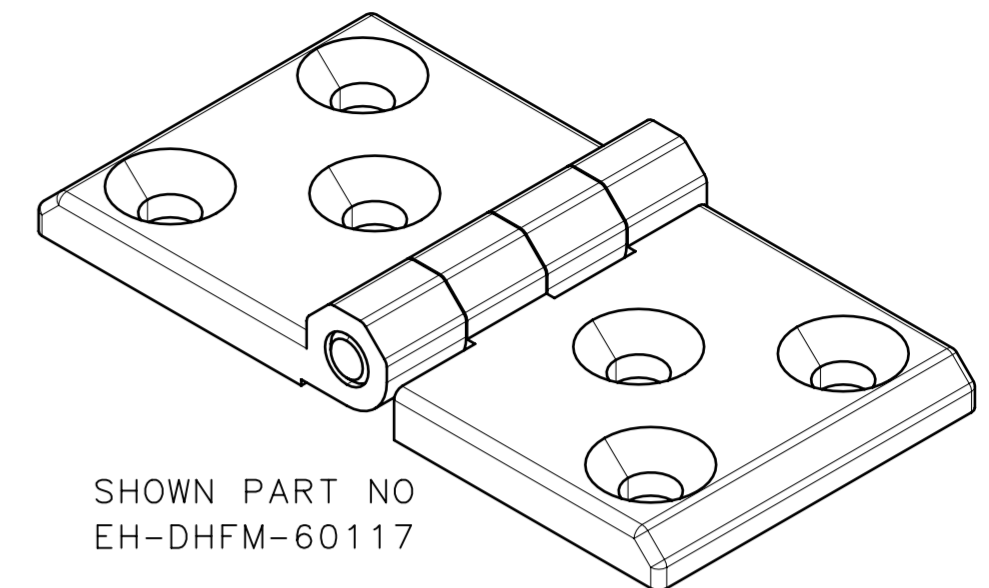
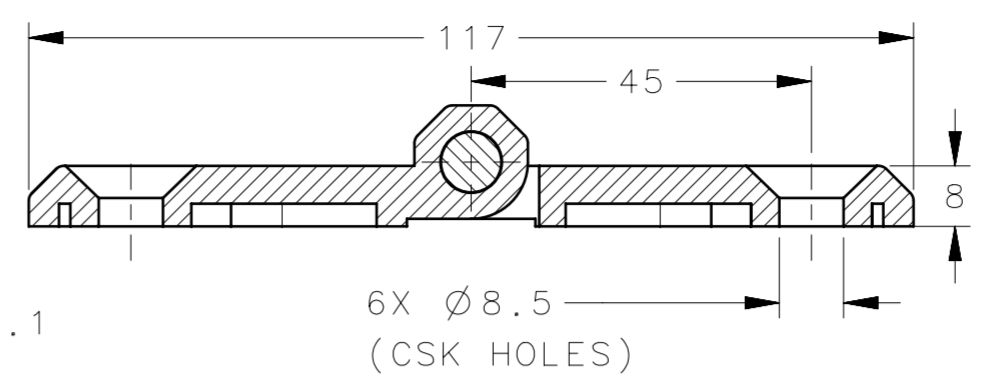
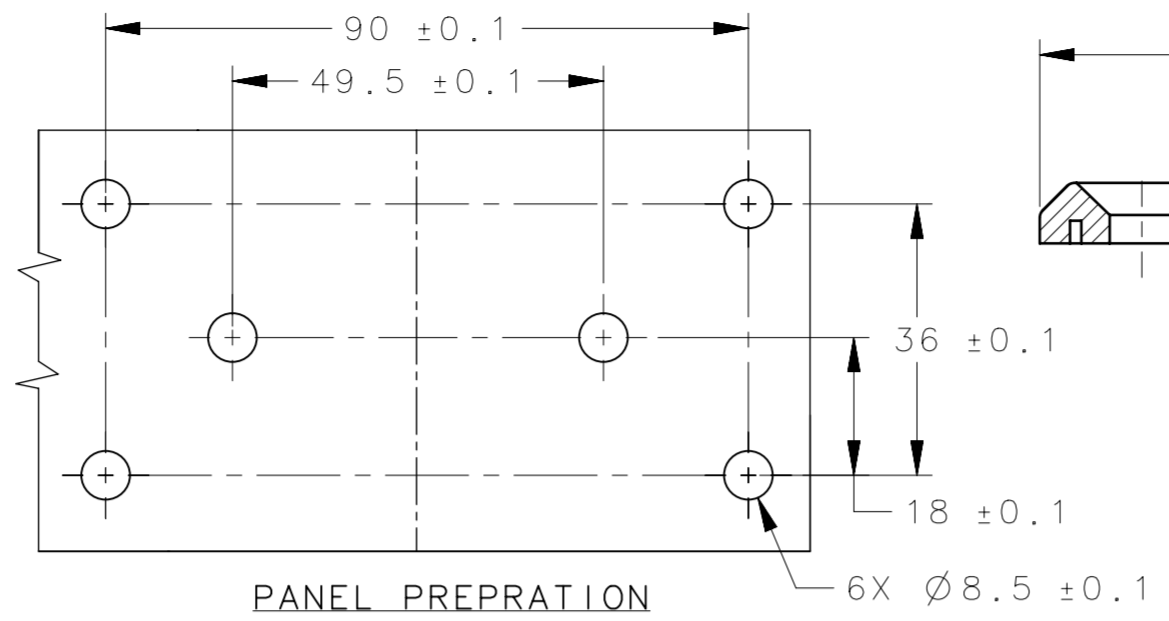
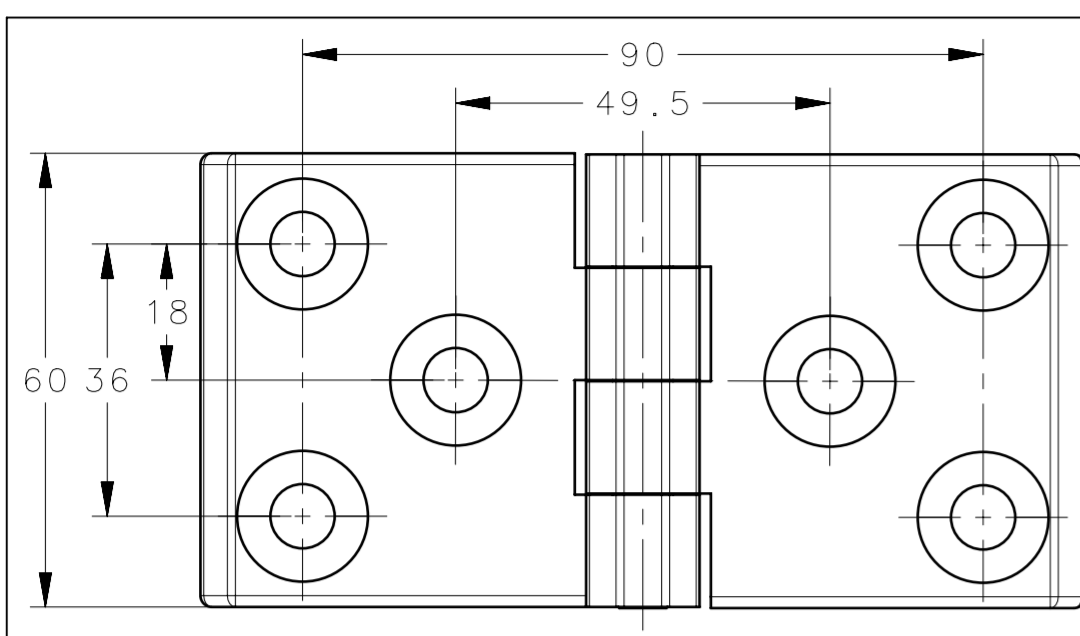


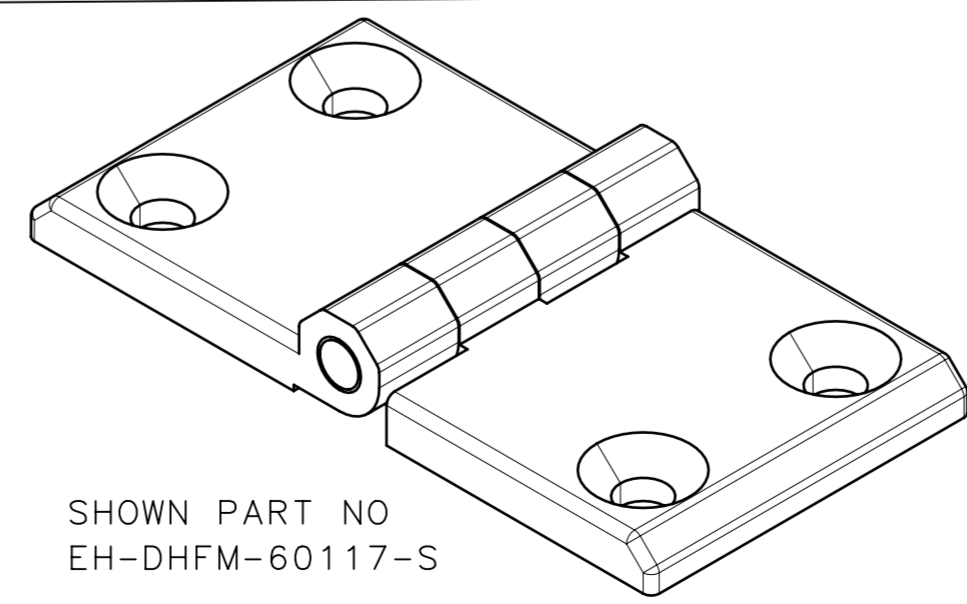
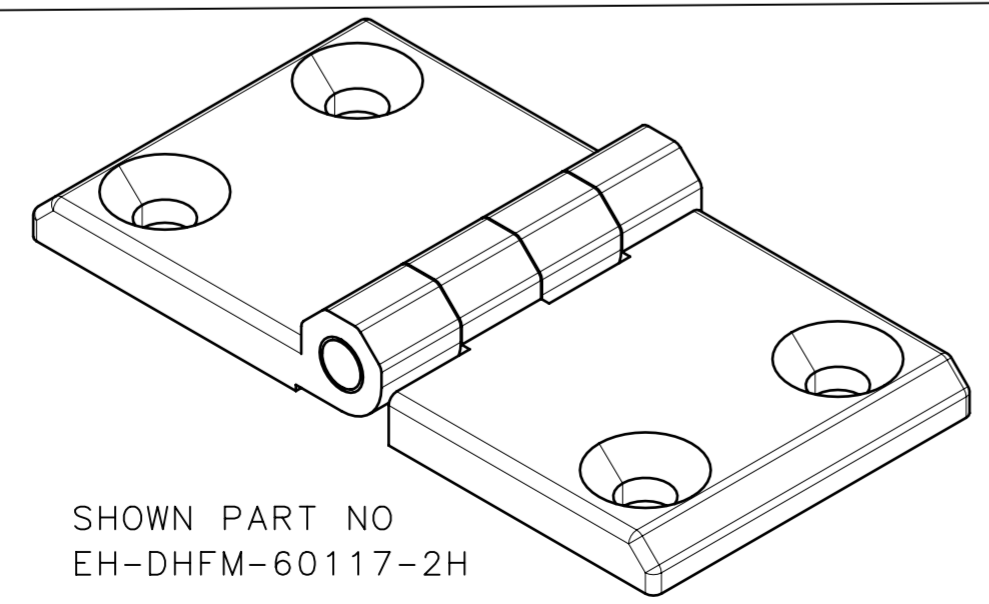
REVISION HISTORY			
REV	DATE	BY	DESCRIPTION
A	03SEP2024	SBK/VK	IPN: 1P-2024-2045



SHOWN PART NO
EH-DHFM-60117-2H

EH-DHFM-60117-2H

EH-DHFM-60117-S



- NOTES: -
1. MOUNTING SCREWS NOT SUPPLIED.
 2. OPENING ANGLE 180°.

EH-DHFM-60117	FLAT HINGE , (3 CSK HOLE + 3 CSK HOLE)	ZINC DIE CAST	BLACK POWDER COATED
EH-DHFM-60117-SH	FLAT HINGE , (STUD + 3 CSK HOLE)	ZINC DIE CAST	BLACK POWDER COATED
EH-DHFM-60117-2H	FLAT HINGE , (CSK HOLE + CSK HOLE)	ZINC DIE CAST	BLACK POWDER COATED
EH-DHFM-60117-S	FLAT HINGE , (STUD + STUD)	ZINC DIE CAST	BLACK POWDER COATED
SOUTHCO PART NUMBER		MATERIAL	FINISH
CPB NUMBER	2024-0677	THIRD ANGLE PROJECTION	
SURFACE AREA		MILLIMETERS [IN]	
VOLUME		TOLERANCES UNLESS OTHERWISE NOTED	
PROPRIETARY ITEM		DESCRIPTION	
EXCEPT FOR USES EXPRESSLY GRANTED IN WRITING, INFORMATION DISCLOSED HEREON IS CONFIDENTIAL AND ALL RIGHTS, PATENT AND OTHERWISE, ARE RESERVED BY SOUTHCO, INC.		ALL DIMENSIONS WITHOUT TOLERANCES ARE FOR REFERENCE ONLY.	
PER ASME Y14.5M-2009		SIZE	SYSTEM
		A2	NX
		DWG NO. J-EH-DHFM-60117	
		DRAWN BY	DATE
		SBK	03SEP2024
		SCALE	SHEET
		1:1	1 OF 1



FLAT HINGE

SCALE 1:1 SHEET 1 OF 1