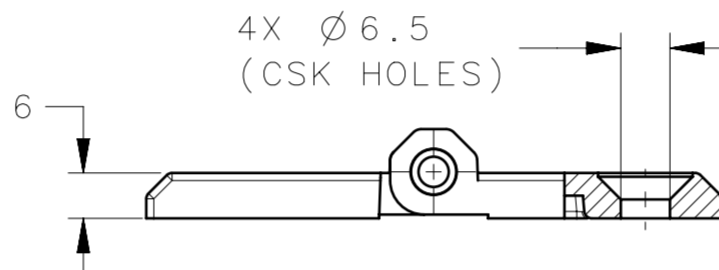
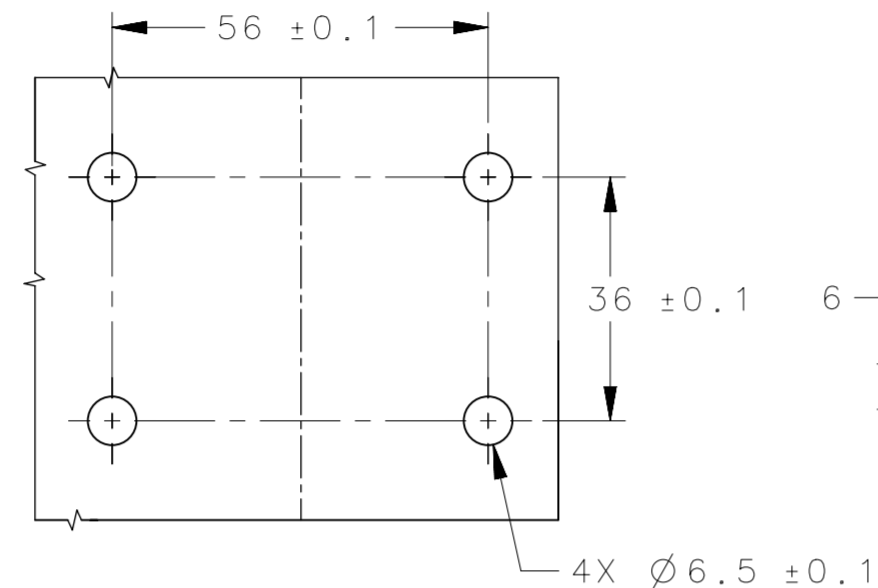
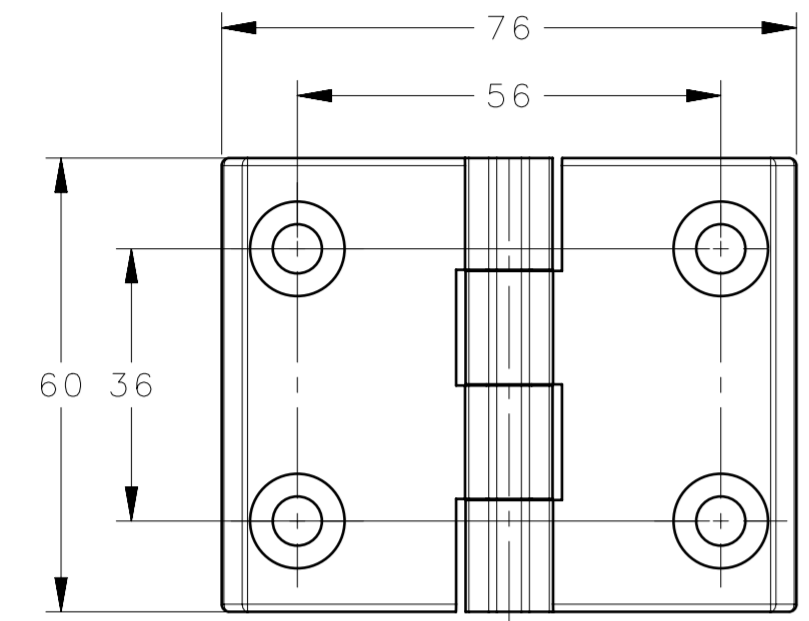
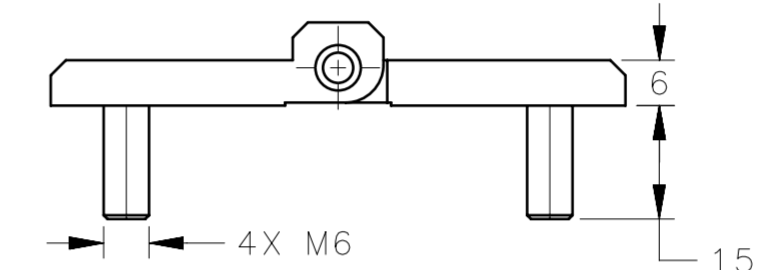


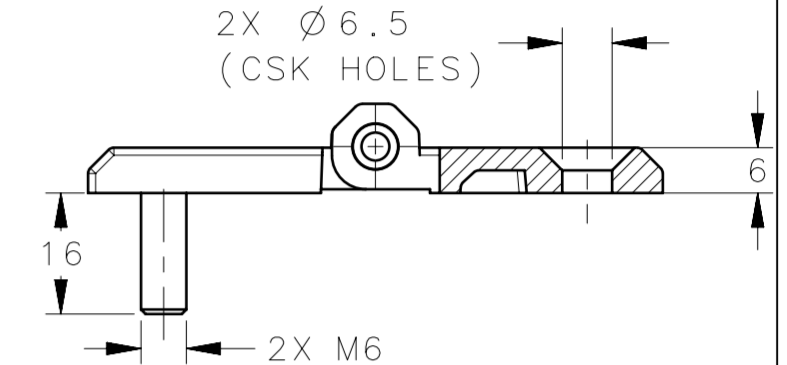
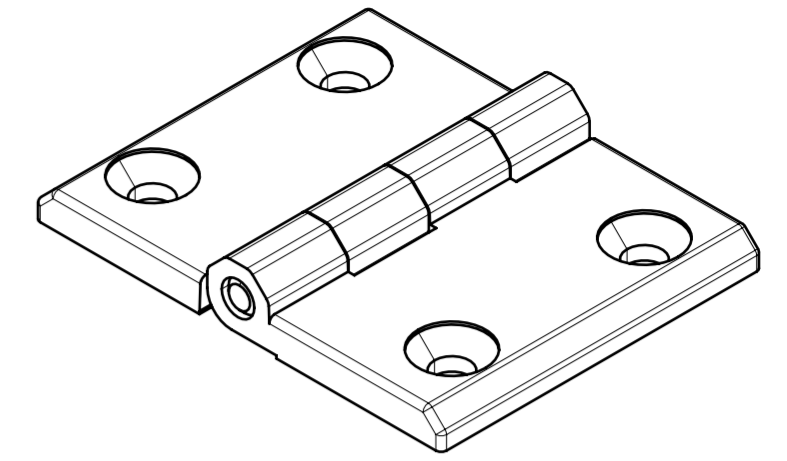
REVISION HISTORY			
REV	DATE	BY	DESCRIPTION
A	22AUG2024	SBK/VK	IPN: IP2024-2045



EH-DHFM-76

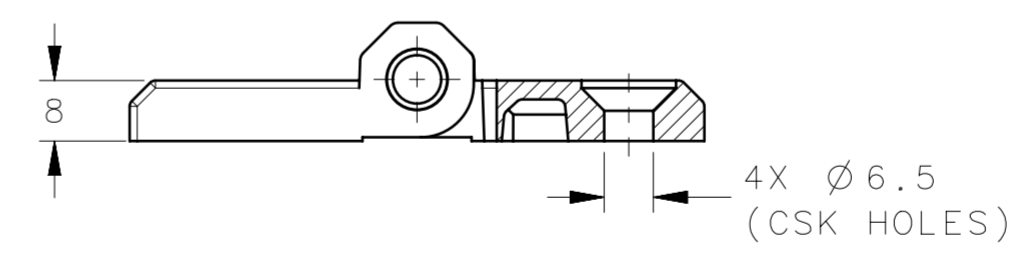
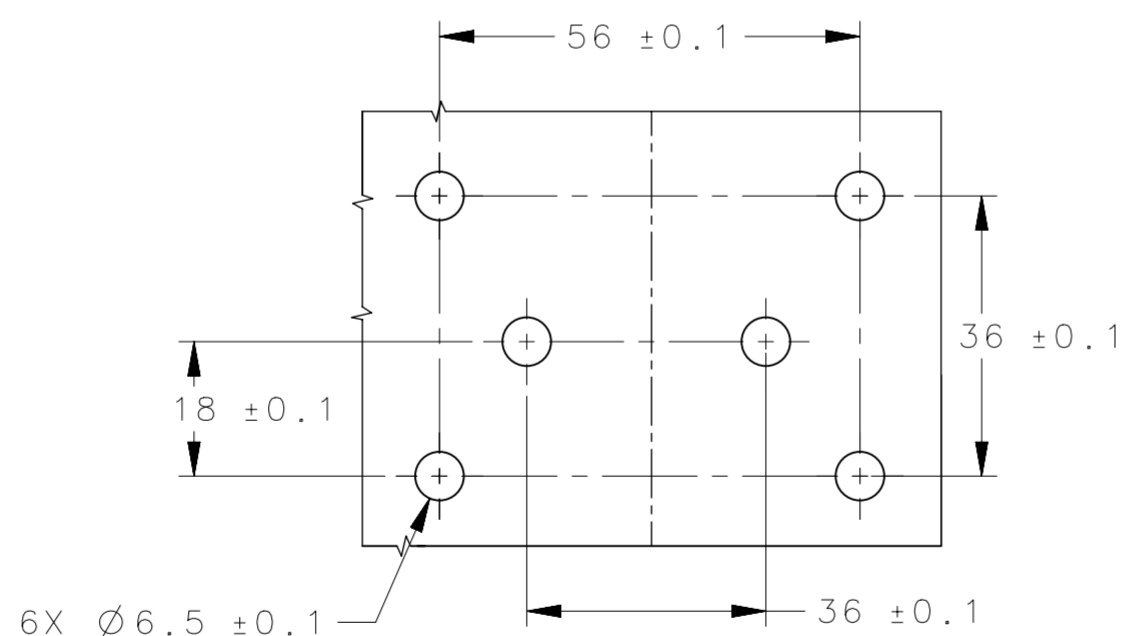
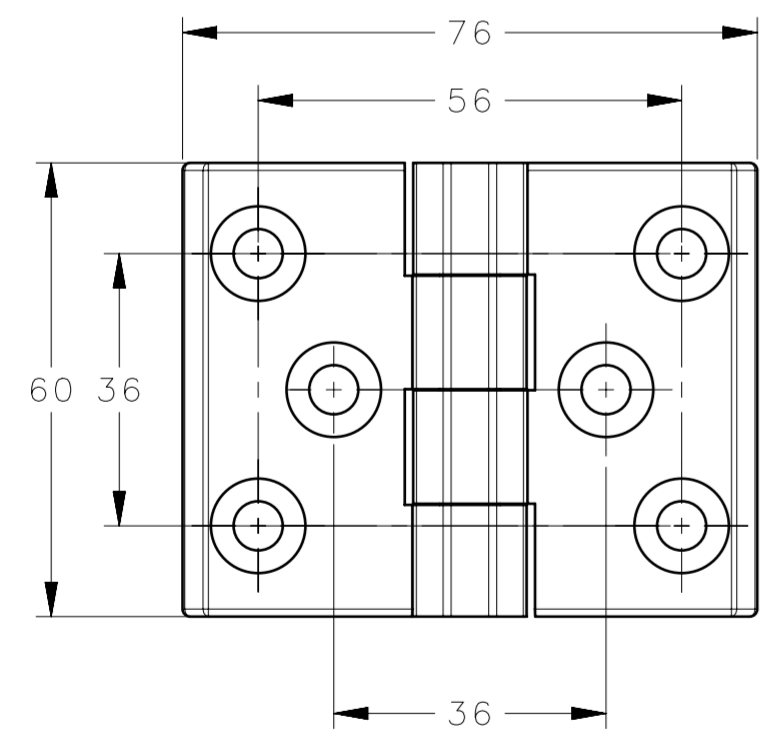


EH-DHFM-76S

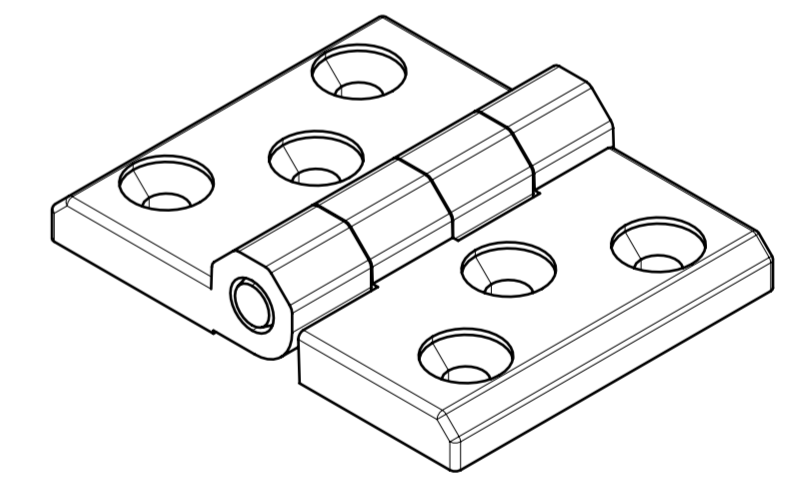


EH-DHFM-76-SH

PANEL PREPRATION



EH-DHFM-76-8-3H



PANEL PREPRATION

- NOTES:-
1. MOUNTING SCREWS NOT SUPPLIED.
 2. OPENING ANGLE 180°.

EH-DHFM-76	FLAT HINGE , (CSK HOLE + CSK HOLE)	ZINC DIE CAST	BLACK POWDER COATED
EH-DHFM-76S	FLAT HINGE , (STUD + STUD)	ZINC DIE CAST	BLACK POWDER COATED
EH-DHFM-76-SH	FLAT HINGE , (STUD + CSK HOLE)	ZINC DIE CAST	BLACK POWDER COATED
EH-DHFM-76-8-3H	FLAT HINGE , (THREE CSK HOLE)	ZINC DIE CAST	BLACK POWDER COATED
SOUTHCO PART NUMBER	DESCRIPTION	MATERIAL	FINISH

CPB NUMBER 2024-0676	THIRD ANGLE PROJECTION	 CONNECT · CREATE · INNOVATE	
MILLIMETERS [IN]			
SURFACE AREA XXXXXmm ²		DESCRIPTION FLAT HINGE	
VOLUME XXXXXmm ³		ALL DIMENSIONS WITHOUT TOLERANCES ARE FOR REFERENCE ONLY.	
PROPRIETARY ITEM		SIZE A2	SYSTEM NX
EXCEPT FOR USES EXPRESSLY GRANTED IN WRITING, INFORMATION DISCLOSED HEREON IS CONFIDENTIAL AND ALL RIGHTS, PATENT AND OTHERWISE, ARE RESERVED BY SOUTHCO, INC.		DWG NO. J-EH-DHFM-76	SCALE 1:1
PER ASME Y14.5M-2009		DRAWN BY SBK	DATE 30JUL2024
		SHEET 1 OF 1	