

southco

PROPRIETARY ITEM - EXCEPT FOR USES EXPRESSLY GRANTED IN WRITING INFORMATION DISCLOSED HEREON IS CONFIDENTIAL AND ALL RIGHTS PATENT AND OTHERWISE ARE RESERVED BY SOUTHCO, INC.

F6 PULL-PIN RELEASE HINGE

DATE: 17MAR2005
 DRAWN: MJS
 CHKD: JF
 SCALE: 1:1

DRAWING NUMBER: J-F6-23

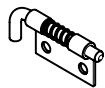
REV	DATE	DRAWN/CHKD	DESCRIPTION	ASSEMBLY PART NUMBER		MATERIAL	FINISH
				LEFT	RIGHT		
				F6-23-N3AW	F6-23-N4AW	STEEL	ZINC PLATE, BRIGHT CHROMATE
				F6-23-S3AW	F6-23-S4AW	300 SERIES STAINLESS STEEL	PASSIVATED
				F6-23-N7AW	F6-23-N8AW	STEEL	ZINC PLATE, BRIGHT CHROMATE
				F6-23-S7AW	F6-23-S8AW	300 SERIES STAINLESS STEEL	PASSIVATED
				F6-23-N11AW	F6-23-N12AW	STEEL	ZINC PLATE, BRIGHT CHROMATE
				F6-23-S11AW	F6-23-S12AW	300 SERIES STAINLESS STEEL	PASSIVATED
				F6-23-N15AW	F6-23-N16AW	STEEL	ZINC PLATE, BRIGHT CHROMATE
				F6-23-S15AW	F6-23-S16AW	300 SERIES STAINLESS STEEL	PASSIVATED

INCHES

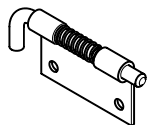
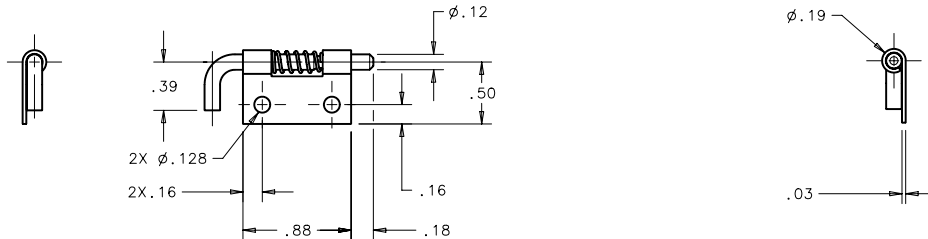
ALL DIMENSIONS WITHOUT TOLERANCES ARE FOR REFERENCE ONLY.

THIRD ANGLE PROJECTION

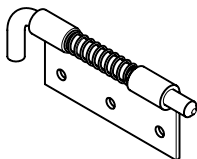
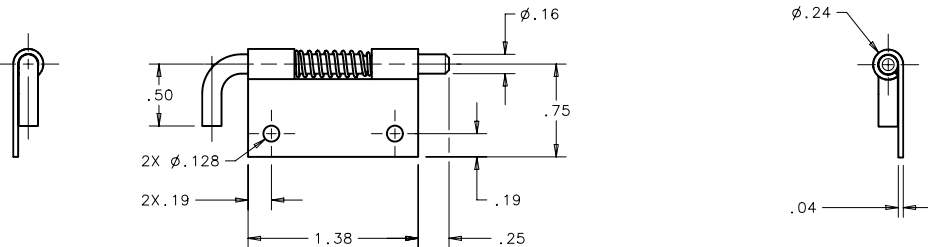
B PAPER SIZE



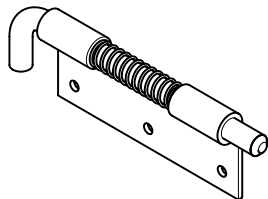
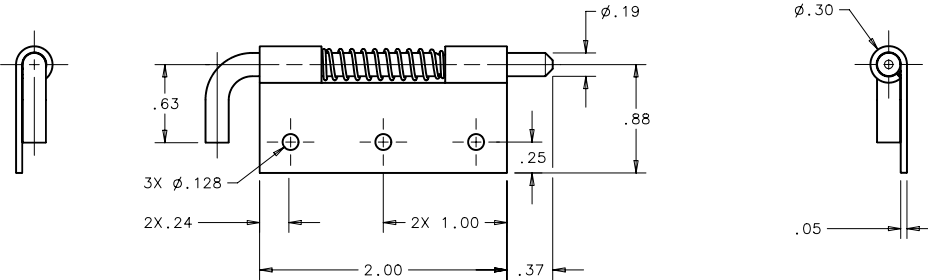
.75:1 SCALE
 PART NUMBER F6-23-N4AW SHOWN.
 PART NUMBER F6-23-N3AW IS
 A MIRROR IMAGE.



.75:1 SCALE
 PART NUMBER F6-23-N8AW SHOWN.
 PART NUMBER F6-23-N7AW IS
 A MIRROR IMAGE.



.75:1 SCALE
 PART NUMBER F6-23-N12AW SHOWN.
 PART NUMBER F6-23-N11AW IS
 A MIRROR IMAGE.



.75:1 SCALE
 PART NUMBER F6-23-N16AW SHOWN.
 PART NUMBER F6-23-N15AW IS
 A MIRROR IMAGE.

