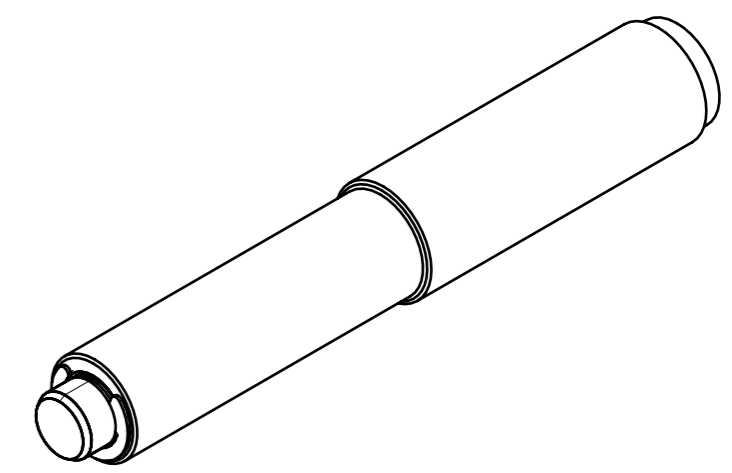
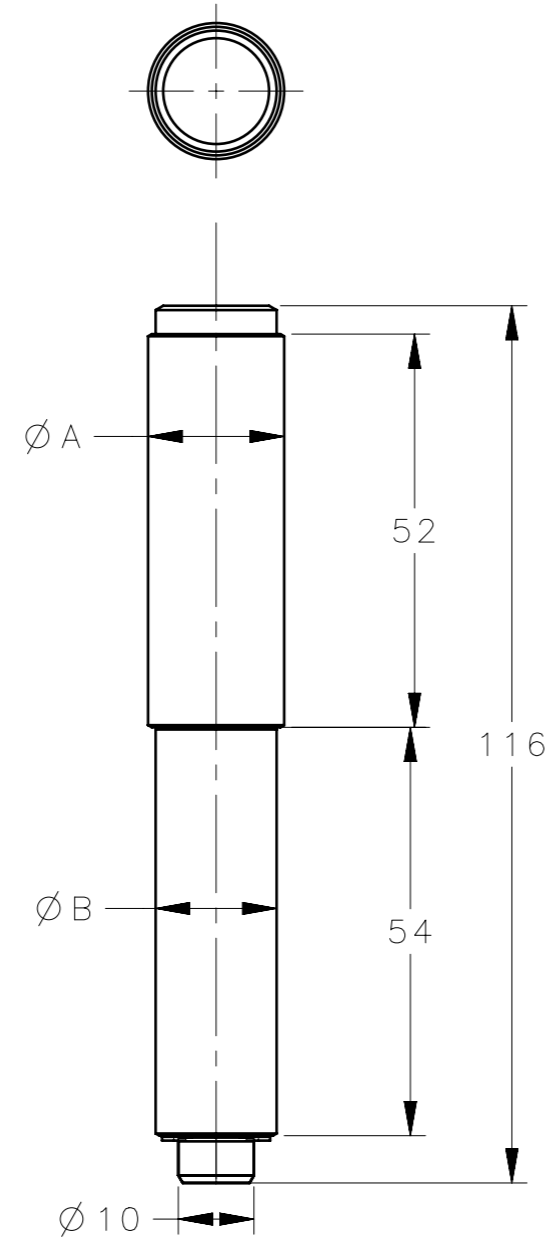


REVISION HISTORY			
REV	DATE	BY	DESCRIPTION
A	04JUL2024	SBK/VK	IPN: IP-2024-1605



NOTES:-
 1. MOUNTING SCREWS NOT SUPPLIED.
 2. OPENING ANGLE 180°.

F6-DHIW-11618	CORNER REMOVABLE HINGES	MS	BLUE ZINC PLATED	18	16
F6-DHIW-11616	CORNER REMOVABLE HINGES	MS	BLUE ZINC PLATED	16	14
SOUTHCO PART NUMBER	DESCRIPTION	MATERIAL	FINISH	Ø A	Ø B
CPB NUMBER 2024-0167	THIRD ANGLE PROJECTION				
	MILLIMETERS [IN]				
SURFACE AREA mm ²	TOLERANCES UNLESS OTHERWISE NOTED	DESCRIPTION CORNER REMOVABLE HINGES			
VOLUME mm ³	ALL DIMENSIONS WITHOUT TOLERANCES ARE FOR REFERENCE ONLY.	SIZE A3	SYSTEM NX	DWG NO. J-F6-DHIW-116	
PROPRIETARY ITEM EXCEPT FOR USES EXPRESSLY GRANTED IN WRITING, INFORMATION DISCLOSED HEREON IS CONFIDENTIAL AND ALL RIGHTS, PATENT AND OTHERWISE, ARE RESERVED BY SOUTHCO, INC.	PER ASME Y14.5M-2009	DRAWN BY SBK	DATE 16APR2024	SCALE 1:1	SHEET 1 OF 1