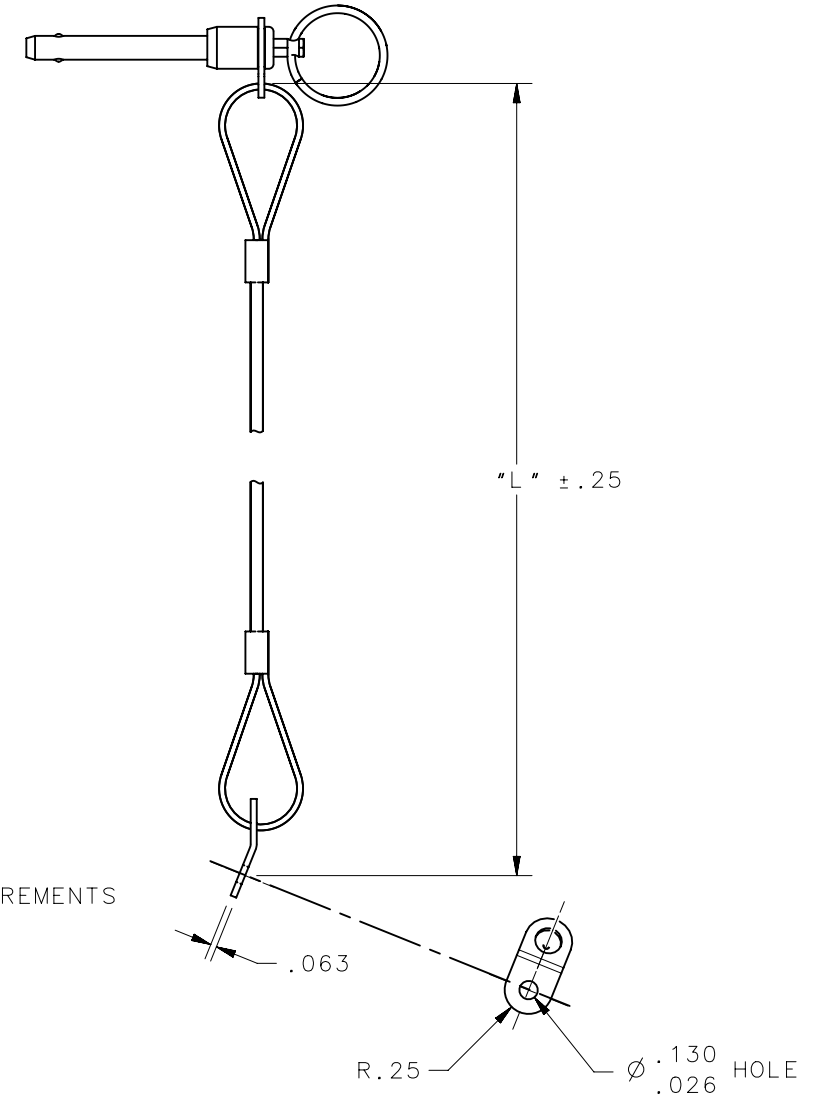
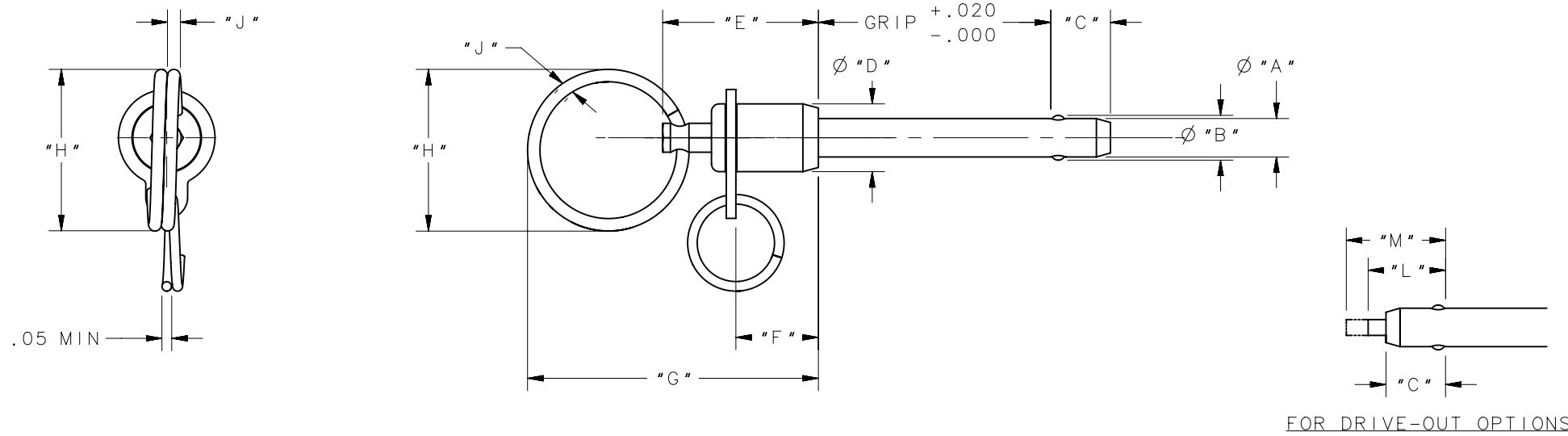


REVISION HISTORY			
REV	DATE	BY	DESCRIPTION
C	28JUN2023	APA/VK	PRN: P2023-1199

NOTES:

1. GRIP LENGTH IN THOUSANDTH INCH INCREMENTS.
FOR EXAMPLE 1500=1.500 INCHES.



NOTES:

A. PART NUMBER INFO:

LH - 4 C R 1500 N E 750 L 12 - MS

LOCKWELL DOUBLE ACTING PIN — LH

SHANK DIA IN 1/16THS (1/4 DIA) — 4

MATERIAL — C

RING STYLE — R

GRIP — 1500

SEE NOTE 1 — N

D = DRIVE OUT
OMIT FOR STANDARD
NON DRIVE CONSTRUCTION — E

MS = PINS SUPPLIED AS MEETING MS STANDARDS

NAS = PINS SUPPLIED AS MEETING NAS STANDARDS

LANYARD LENGTH IN INCHES — L

"L" EXTENSION AND SUFFIX FOR LANYARD REQUIREMENT.
OMIT THIS SUFFIX IF NO LANYARD IS REUIRED — 12

LONGER NON-STANDARD "C" DIM IN THOUSANDTHS INCH INCREMENTS — 750

"F" = FOUR BALL PIN
OMIT FOR TWO BALL PIN — 12

B. MATERIAL AND FINISH: ALL COMPONENTS STAINLESS STEEL, PASSIVATED; CABLE-STAINLESS STEEL, VINYL COATED(GREEN)

SCALE 1:2

PIN DASH No.	A +.0000 -.0015	B	C +.000 -.030	D DIA	E MIN	F	G MAX	H DIA	J DIA	L MAX	M MAX
-3	.1885	.225/.215	.410	.450/.360	.935	.480/.415	1.945	1.125/1.000	.080	.50	.64
-4	.2485	.292/.284	.410	.450/.360	.935	.480/.415	1.945	1.125/1.000	.080	.50	.64
-5	.3110	.377/.370	.440	.505/.445	.935	.480/.415	1.945	1.125/1.000	.080	.55	.68
-6	.3735	.443/.435	.510	.630/.510	1.000	.540/.445	2.025	1.125/1.000	.080	.64	.79
-7	.4360	.512/.504	.510	.630/.510	1.000	.540/.445	2.025	1.125/1.000	.080	.64	.79
-8	.4985	.598/.589	.590	.755/.640	1.070	.540/.445	2.060	1.125/1.000	.080	.75	.92
-9	.5610	.671/.661	.660	.755/.640	1.070	.540/.445	2.060	1.125/1.000	.080	.82	1.02
-10	.6235	.753/.745	.750	.870/.805	1.250	.575/.510	2.550	1.500/1.312	.120	.93	1.15
-12	.7485	.892/.882	.790	.960/.890	1.250	.595/.530	2.550	1.500/1.312	.120	.97	1.19
-14	.8735	1.048/1.041	.950	1.150/1.070	1.500	.730/.665	2.770	1.500/1.312	.120	1.18	1.44
-16	.9985	1.222/1.214	1.100	1.280/1.200	1.700	.865/.800	2.950	1.500/1.312	.120	1.35	1.65

THIRD ANGLE PROJECTION			
INCHES [MM]			
SURFACE AREA XXXXXmm ²		DESCRIPTION LH QUICK RELEASE PIN RING HANDLE DOUBLE ACTING	
VOLUME XXXXXmm ³		SIZE SYSTEM DWG NO. B NX J-LH-R	
PROPRIETARY ITEM EXCEPT FOR USES EXPRESSLY GRANTED IN WRITING, INFORMATION DISCLOSED HEREON IS CONFIDENTIAL AND ALL RIGHTS, PATENT AND OTHERWISE, ARE RESERVED BY SOUTHCO, INC.		DRAWN BY DATE SCALE SHEET ACH 18MAY2010 1:1 1 OF 1	
PER ASME Y14.5M-1994			