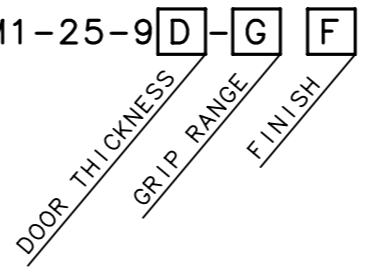


REVISION HISTORY			
REV	DATE	BY	DESCRIPTION
D	28AUG2024	PSP/SAK	PRN: P2024-1500

D	DOOR THICKNESS	G GRIP		SHORT REACH PART NUMBER	LONG REACH PART NUMBER
		MIN	MAX		
1	2 TO 12 [.075 TO .475]	SEE NOTE 1	35 [1.38]	M1-25-91-5F	M1-25-91-8F
		34 [1.34]	48 [1.89]	M1-25-91-4F	M1-25-91-7F
		47 [1.85]	61 [2.40]	M1-25-91-3F	M1-25-91-6F
		60 [2.36]	75 [2.95]	M1-25-91-4F	M1-25-91-7F
		74 [2.91]	88 [3.47]	M1-25-91-5F	M1-25-91-8F
2	12 TO 22.5 [.475 TO .885]	SEE NOTE 1	35 [1.38]	M1-25-92-5F	M1-25-92-8F
		34 [1.34]	48 [1.89]	M1-25-92-4F	M1-25-92-7F
		47 [1.85]	61 [2.40]	M1-25-92-3F	M1-25-92-6F
		60 [2.36]	75 [2.95]	M1-25-92-4F	M1-25-92-7F
		74 [2.91]	88 [3.47]	M1-25-92-5F	M1-25-92-8F
3	18.5 TO 29 [.73 TO 1.14]	SEE NOTE 1	35 [1.38]	M1-25-93-5F	M1-25-93-8F
		34 [1.34]	48 [1.89]	M1-25-93-4F	M1-25-93-7F
		47 [1.85]	61 [2.40]	M1-25-93-3F	M1-25-93-6F
		60 [2.36]	75 [2.95]	M1-25-93-4F	M1-25-93-7F
		74 [2.91]	88 [3.47]	M1-25-93-5F	M1-25-93-8F

**STANDARD PART NUMBER**

M1-25-9[D]-G[F]



**NOTES:**

1. MINIMUM GRIP OF THE FOLLOWING LATCH ASSEMBLIES IS AFFECTED BY DOOR THICKNESS. USE THE FOLLOWING CHART TO DETERMINE YOUR MINIMUM GRIP BY ADDING THE OFFSET VALUE TO YOUR PANEL THICKNESS:

PART NUMBER	OFFSET VALUE
M1-25-91-5F	21.5 [.85]
M1-25-92-5F	11.5 [.45]
M1-25-93-5F	4 [.12]
M1-25-91-8F	18 [.71]
M1-25-92-8F	8 [.32]
M1-25-93-8F	0.5 [.02]

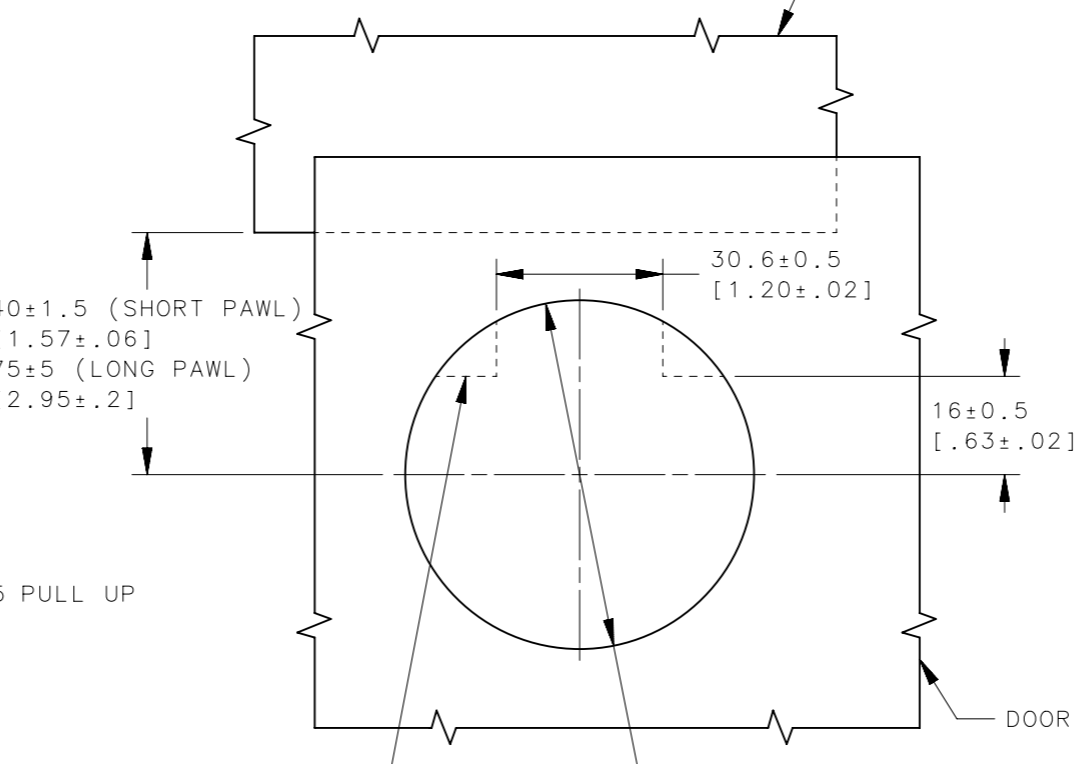
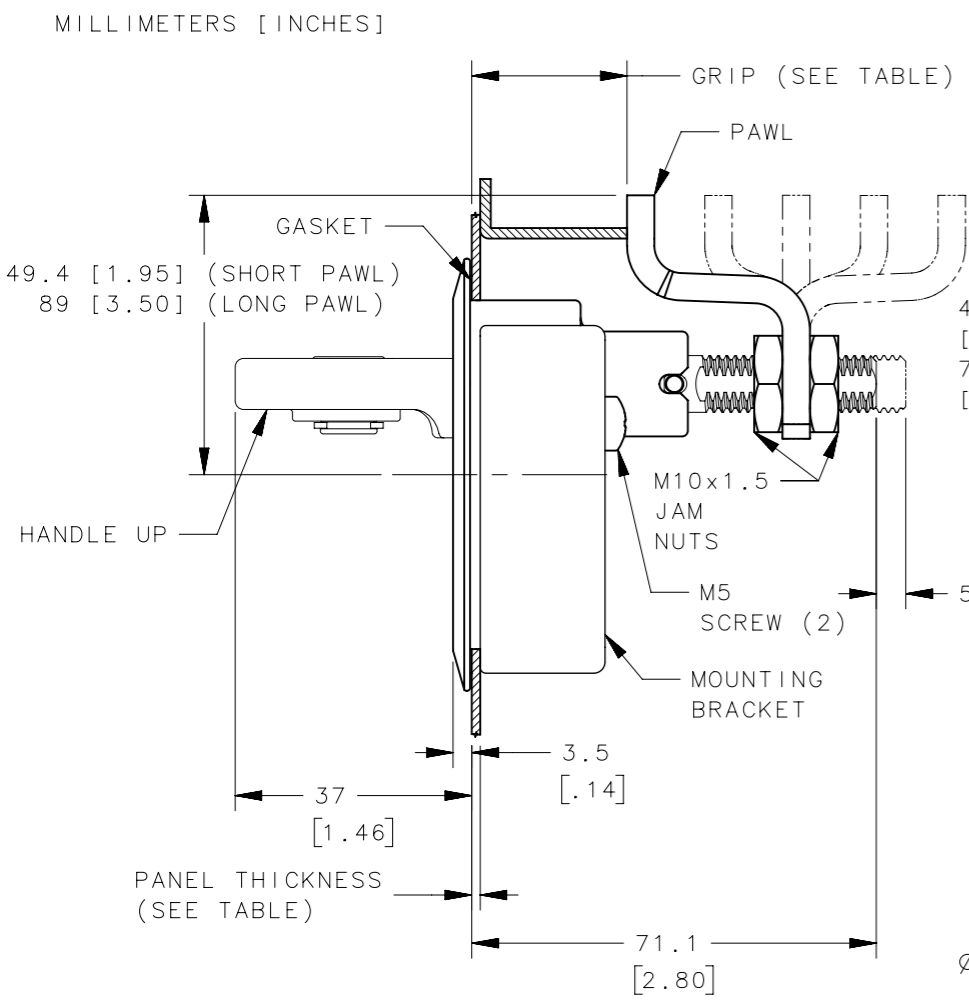
2. FOR LONG PAWL ASSEMBLIES WHERE ONLY A 90° TURN IS DESIRED, A MINIMUM GRIP OF 22 CAN BE OBTAINED FOR ALL PANEL THICKNESS.
3. [F] = 6 - STAINLESS STEEL, BLACK PVD (FOR L=9 ONLY)  
= 8 - STAINLESS STEEL, ELECTROPOLISHED
4. USE A 17mm WRENCH ON EACH JAM NUT SIMULTANEOUSLY TO SECURE PAWL DURING ASSEMBLY TO AVOID TRANSMISSION OF TORQUE TO PINS/HANDLE

**MATERIAL AND FINISH**

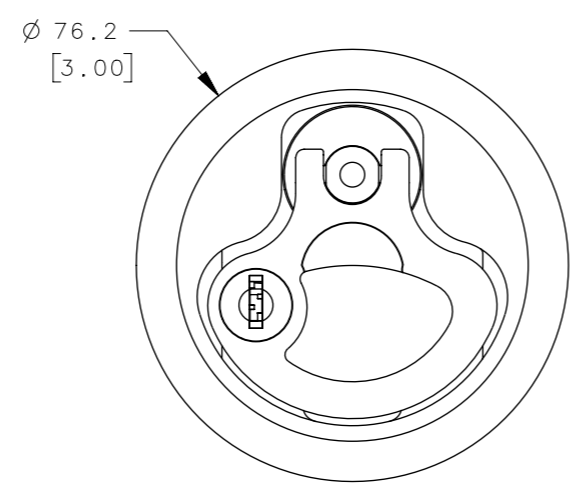
- HOUSING, HANDLE: CF-8M STAINLESS STEEL (NOMINAL CAST EQUIVALENT OF 316 STAINLESS STEEL), ELECTROPOLISHED OR BLACK PVD
- MOUNTING BRACKET: CF-8M STAINLESS STEEL (NOMINAL CAST EQUIVALENT OF 316 STAINLESS STEEL), ELECTROPOLISHED
- STUD: 316 STAINLESS STEEL, PASSIVATED OR BLACK PVD
- JAM NUTS: 316 STAINLESS STEEL, PASSIVATED
- WEAR WASHER: NYLON, GRAY
- O-RINGS: BUNA-N, NATURAL
- PINS,PAWLS,SPRING AND SCREWS:300 SERIES STAINLESS STEEL, PASSIVATED
- SLEEVE: ACETAL, BLACK
- GASKET: NEOPRENE, BLACK

**LOCKPLUG:**

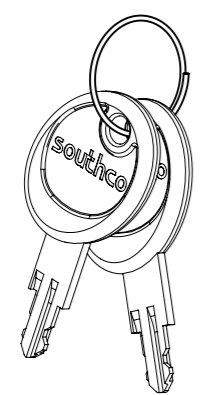
- LOCKPLUG BODY: 316 STAINLESS STEEL
- RETAINER: 301 STAINLESS STEEL
- WAFERS: BRASS
- SPRING: 300 SERIES STAINLESS STEEL
- KEYS: BRASS, NICKEL PLATED; OVERMOLD: ABS PLASTIC



**PANEL PREPARATION**



LATCH ASSEMBLY



KEYS

CPB NUMBER 2023-0253	THIRD ANGLE PROJECTION	
SURFACE AREA	MILLIMETERS [IN]	
VOLUME	TOLERANCES UNLESS OTHERWISE NOTED	DESCRIPTION M1 2.5 INCH COMPRESSION LATCH KEY LOCKING
PROPRIETARY ITEM <small>EXCEPT FOR USES EXPRESSLY GRANTED IN WRITING, INFORMATION DISCLOSED HEREON IS CONFIDENTIAL AND ALL RIGHTS, PATENT AND OTHERWISE, ARE RESERVED BY SOUTHCO, INC.</small>	ALL DIMENSIONS WITHOUT TOLERANCES ARE FOR REFERENCE ONLY.	SIZE A3
PER ASME Y14.5M-2009	DRAWN BY JWJ	SYSTEM NX
	DATE 09FEB2004	DWG NO. J-M1-25-9
	SCALE 0.75:1	SHEET 1 OF 1