

REV.	DATE	DRAWN	REVISION	PART NUMBER	PADLOCK OPTION	KEY LOCKING
H	28DEC2002	AJH/VNI		M3-40-100-25	NO	
I	23OCT2003	AJH/DLH		M3-40-101-25	YES	
J	10FEB2004	AJH/RLR		P2003-0807 P2004-0134		

ALL DIMENSIONS WITHOUT TOLERANCES ARE IN MILLIMETERS.

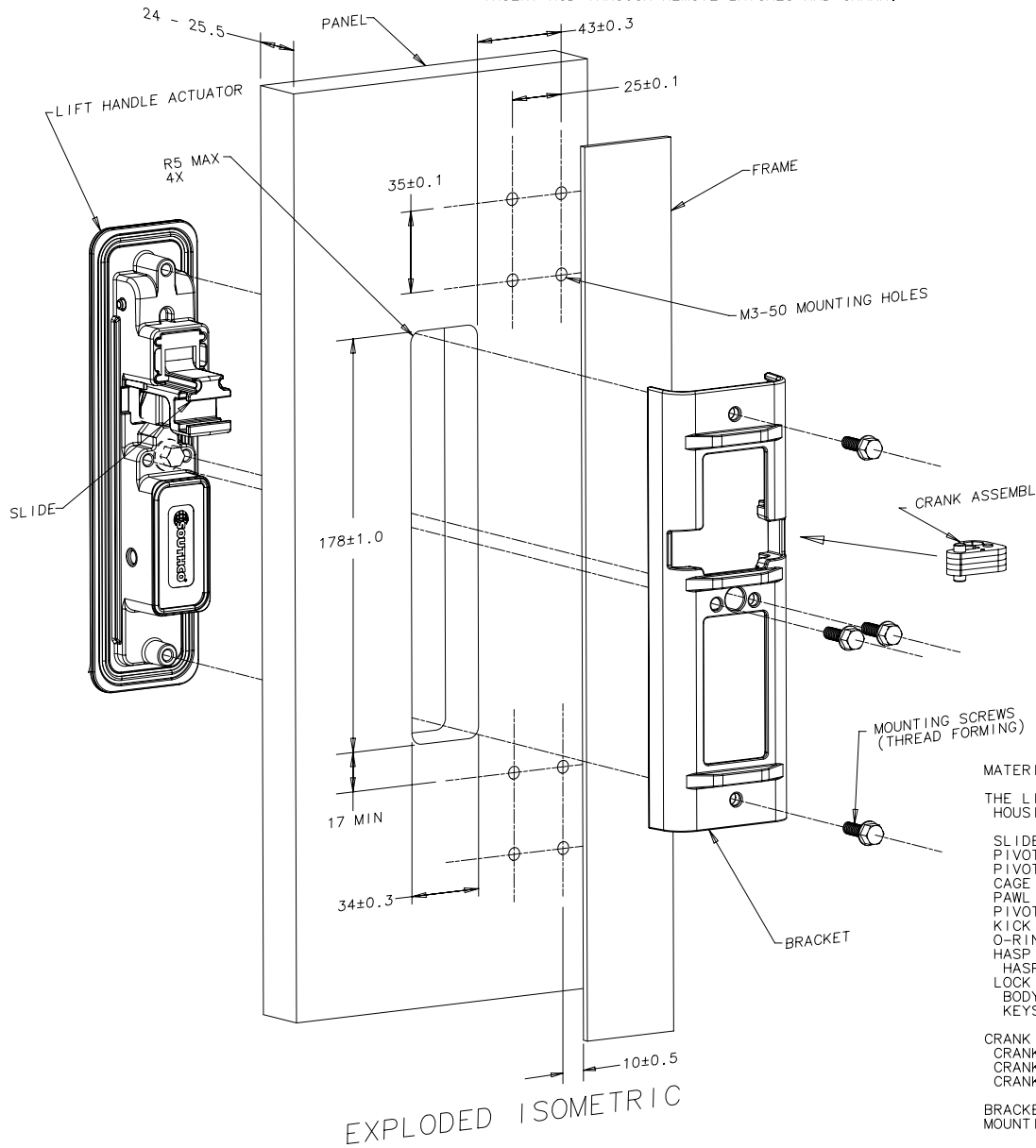
ALL DIMENSIONS WITHOUT TOLERANCES ARE IN MILLIMETERS.

A3 PAPER SIZE

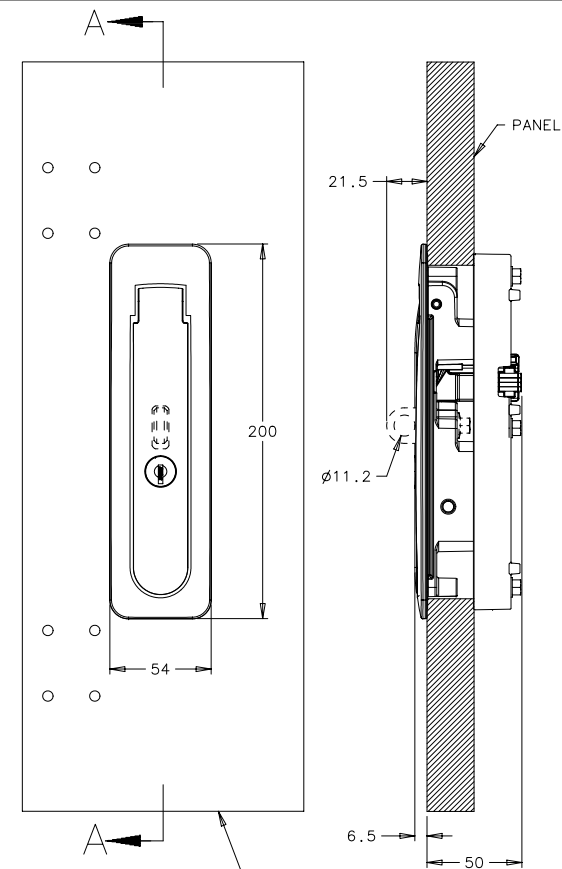
THIRD ANGLE PROJECTION

**INSTALLATION INSTRUCTIONS:**

INSERT LIFT HANDLE ACTUATOR INTO PANEL CUTOUT. POSITION BRACKET ON OPPOSITE SIDE OF PANEL AND FASTEN TO LIFT HANDLE ACTUATOR USING MOUNTING SCREWS. TIGHTEN MOUNTING SCREWS WITH DRIVER SET TO 3.4 N•m MIN. - 4.5 N•m MAX. TORQUE.  
INSERT CRANK INTO SLIDE.  
WITH REMOTE LATCHES (NOT SHOWN) IN THE CLOSED POSITION, INSERT ROD THROUGH REMOTE LATCHES AND CRANK.



EXPLODED ISOMETRIC



SECTION A-A  
PANEL SECTIONED ONLY

**INSTALLED VIEWS**  
SCALE .38:1

**MATERIAL AND FINISH:**

THE LIFT HANDLE ACTUATOR CONSISTS OF:  
HOUSING, HANDLE, COVER PLATE, - DIE CAST ZINC, BLACK POWDER COATED, WITH SILICONE AND URETHANE GASKETS  
SLIDE & LOCK PAWL - DIE CAST ZINC, ORGANIC COATING  
PIVOT PIN OUTER SHELL - 303 STAINLESS STEEL, PASSIVATED  
PIVOT PIN INNER SHELL - 303 STAINLESS STEEL, PASSIVATED  
CAGE - POLYETHER IMIDE, BLACK  
PAWL SPRING - 302 STAINLESS STEEL, PASSIVATED  
PIVOT PIN SPRING - 302 STAINLESS STEEL, NATURAL  
KICK OUT SPRING - 301 STAINLESS STEEL, PASSIVATED  
O-RINGS - EPDM, BLACK  
HASP - 316 STAINLESS STEEL, RESIN IMPREGNATED  
HASP MOUNTING SCREW - STEEL, ZINC PLATE BRIGHT  
LOCK PLUG  
BODY - DIE CAST ZINC, BLACK POWDER COAT ON HEAD  
KEYS (2) - BRASS

**CRANK ASSEMBLY**  
CRANK LAMINATE - 304 STAINLESS STEEL, PASSIVATED  
CRANK PIN - 300 STAINLESS STEEL, PASSIVATED  
CRANK RIVET - STAINLESS STEEL, PASSIVATED

**BRACKET - DIE CAST ZINC, BLACK POWDER COAT**  
**MOUNTING SCREWS - STEEL, ZINC PLATE BRIGHT**