

MATERIAL AND FINISH

- LATCH MODULE
- LOCK ENGINE: BRASS
  - DEAD BOLT: BRASS, NICKEL PLATED
  - DEAD BOLT McCOY STAR SLIDER: 2348 STAINLESS STEEL
  - SPRINGS: 304 STAINLESS STEEL
- LOCK MODULE
- LOCK CASE AND COVER PLATE: 316 STAINLESS STEEL
  - INTERNAL COMPONENTS: 316 STAINLESS STEEL
  - SPRINGS: 316 STAINLESS STEEL
  - SCREWS: 316 STAINLESS STEEL
- FOREND: BRASS, CHROME PLATED
- MOUNTING SCREWS M4 POZIDRIVE: 316 STAINLESS STEEL
- HANDLES: BRASS, FINISH SEE TABLE
- ESCUTCHEONS, ACCENTS AND TURN KNOB: BRASS SEE TABLE FOR FINISH
- DRIVEBAR: BRASS
- WASHERS: PA6, WHITE
- SET SCREWS 10/32": 316 STAINLESS STEEL

NOTES

1. FOR PANEL PREPERATION INSTRUCTIONS, SEE DRAWING NUMBER J-MA-BB-C5C-DD-FFF SHEET 2
2. DRAWING SHOWS PORTIFINO HANDLES
3. FOR STRIKERS SEE J-MC-90-4XX
4. FOR McCOY STAR SLIDER STRIKER SEE: J-MC-90-6XX

REVISION HISTORY			
REV	DATE	BY	DESCRIPTION
E	31MAR2021	CMS/MGG	PRN: P2021-0625

PART NUMBER SYSTEM  
 MA-BB-C5C-DD-FFO

PRODUCT [A]1  
 DIRECTION [C]1  
 DOOR THICKNESS [C]3  
 HANDLE [DD]1  
 FINISH [FF]

- PRODUCT [BB]
- 02 - McCOY STAR
  - 07 - McCOY STAR WITH DOUBLE SPRING BOLT
  - 09 - McCOY STAR SLIDER

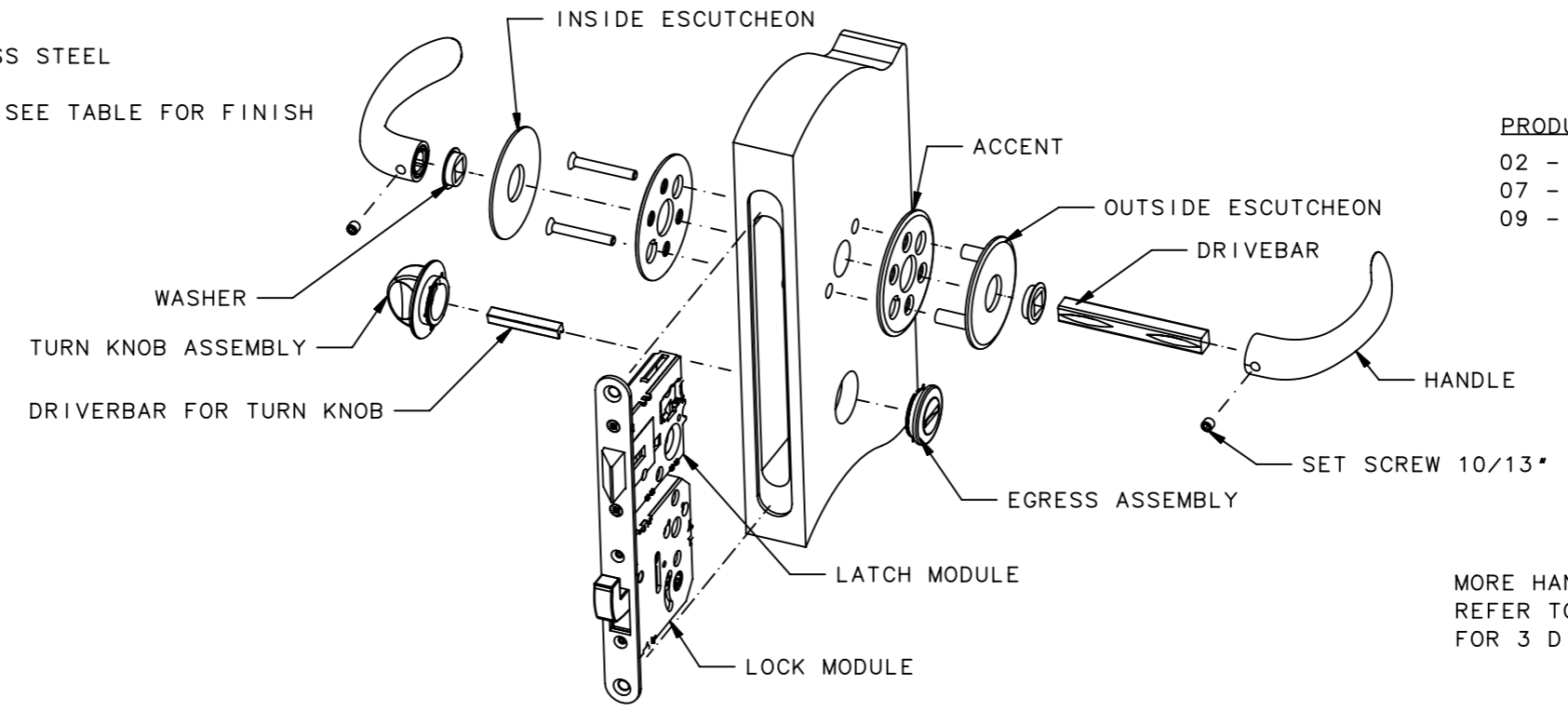
- DIRECTION [C1]
- 2 - RIGHT OUT [SLIDER]
  - 3 - RIGHT IN
  - 4 - LEFT OUT [SLIDER]
  - 5 - LEFT IN

- HANDLE [DD]
- 01 - NOVA HANDLE
  - 02 - PORTOFINO HANDLE

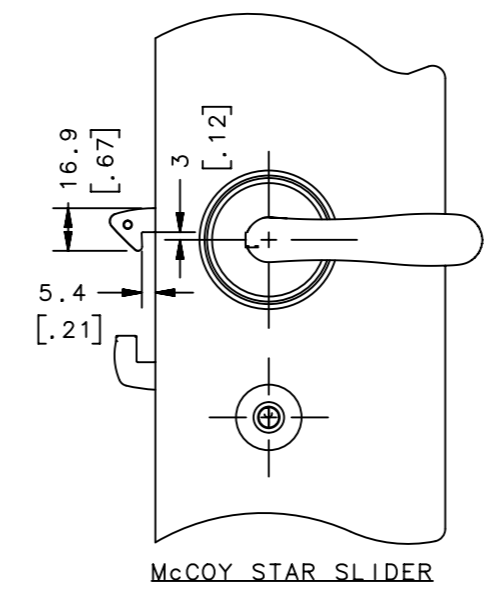
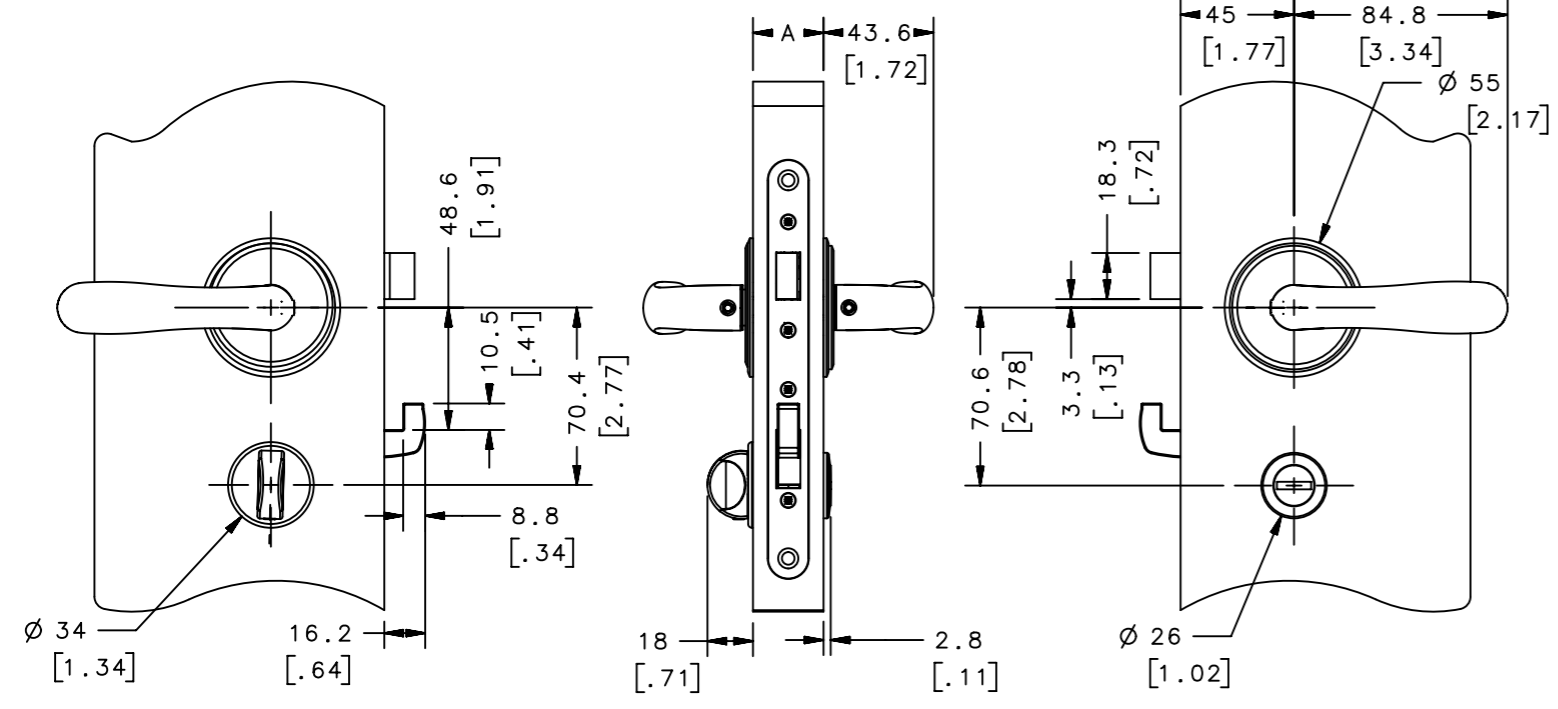
MORE HANDLE OPTIONS AVAILABLE  
 REFER TO OLIVARI WEBSITE AND LITERATURE  
 FOR 3 DIGIT CODE.

- DOOR THICKNESS [C3]
- 0 - 22-30mm [7/8" - 1 3/16"]
  - 1 - 28-37mm [1 1/8" - 1 1/2"]
  - 2 - 36.5-45mm [1 7/16" - 1 3/4"]

- FINISH FOR HANDLE, PRIVACY, ACCENTS  
 AND ESCUTCHEONS [FF]
- 10 - CHROME
  - 14 - BRIGHT CHROME WITH DIAMOND BRASS ACCENT
  - 20 - SATIN CHROME
  - 40 - DIAMOND BRASS



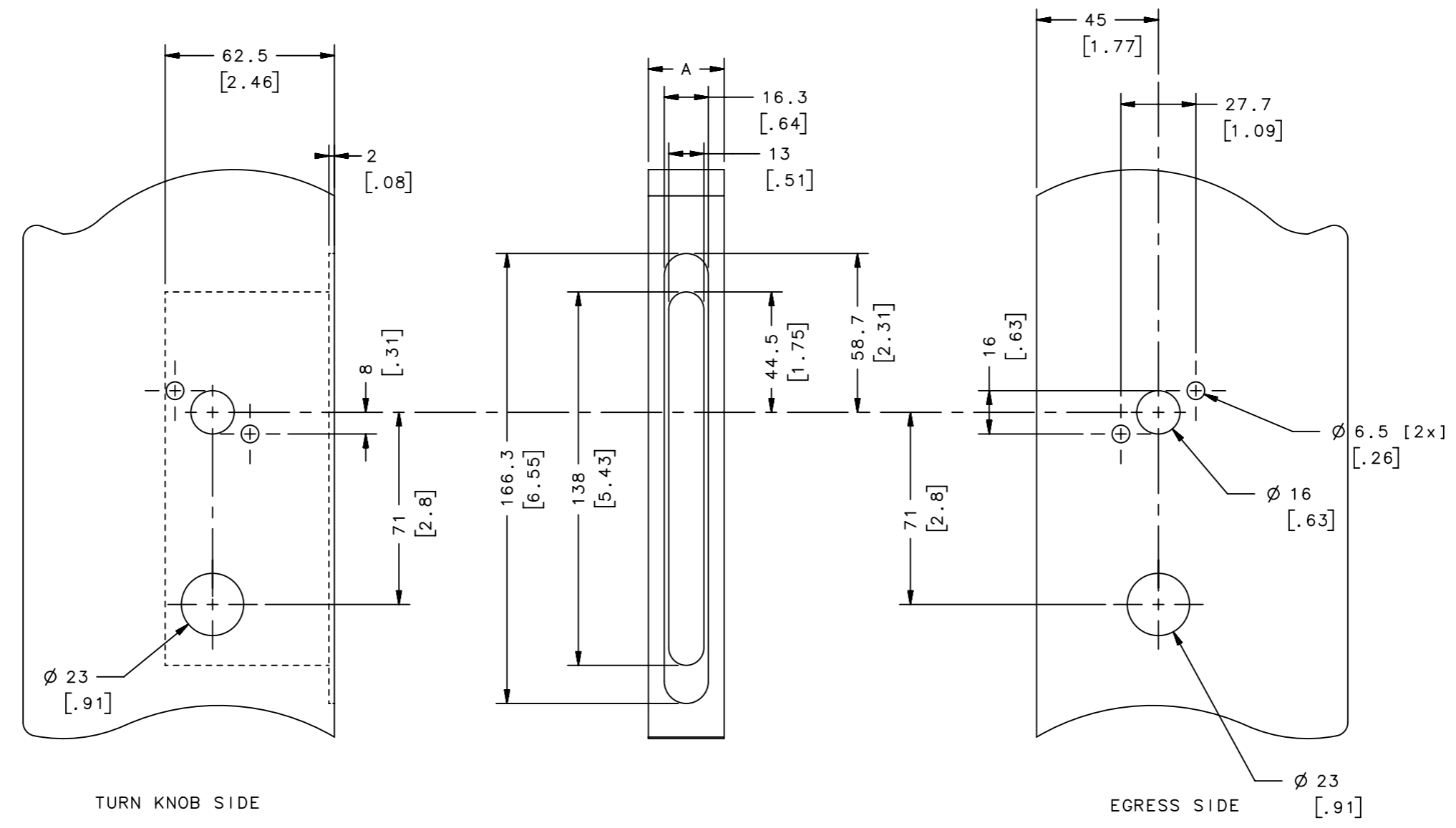
McCOY STAR AND McCOY STAR WITH DOUBLE SPRING BOLT



THIRD ANGLE PROJECTION			
MILLIMETERS [IN]			
TOLERANCES UNLESS OTHERWISE NOTED		DESCRIPTION McCOY STAR EGRESS - ROUND	
ALL DIMENSIONS WITHOUT TOLERANCES ARE FOR REFERENCE ONLY.		SIZE A3	SYSTEM NX
PROPRIETARY ITEM EXCEPT FOR USES EXPRESSLY GRANTED IN WRITING, INFORMATION DISCLOSED HEREON IS CONFIDENTIAL AND ALL RIGHTS, PATENT AND OTHERWISE, ARE RESERVED BY SOUTHCO, INC.		DWG NO. J-MA-BB-C5C-DD-FFF	DATE 05APR2007
PER ASME Y14.5M-1994		DRAWN BY DA/HJ	SCALE 1:3
		SHEET 1 OF 4	

REVISION HISTORY			
REV	DATE	BY	DESCRIPTION
E	31MAR2021	CMS/MGG	PRN: P2021-0625

NOTE.  
 PANEL PREPERATION FOR ASSEMBLIES MA-02-Ç5Ç-DD-FF0 AND MA-07-Ç5Ç-DD-FF0



THIRD ANGLE PROJECTION MILLIMETERS [IN] TOLERANCES UNLESS OTHERWISE NOTED ALL DIMENSIONS WITHOUT TOLERANCES ARE FOR REFERENCE ONLY. PER ASME Y14.5M-1994			<b>southco</b> <sup>®</sup> CONNECT • CREATE • INNOVATE	
	DESCRIPTION MCCOY STAR EGRESS-ROUND PANEL PREPERATION		SIZE A3	SYSTEM NX
	PROPRIETARY ITEM <small>EXCEPT FOR USES EXPRESSLY GRANTED IN WRITING, INFORMATION DISCLOSED HEREON IS CONFIDENTIAL AND ALL RIGHTS, PATENT AND OTHERWISE, ARE RESERVED BY SOUTHCO, INC.</small>		DWG NO. J-MA-BB-C5C-DD-FFF	DATE 05APR2007
	DRAWN BY DA/HJ	SCALE 1:2	SHEET 2 OF 4	

REVISION HISTORY			
REV	DATE	BY	DESCRIPTION
E	31MAR2021	CMS/MGG	PRN: P2021-0625

**MATERIAL AND FINISH**

- LATCH MODULE  
 - LOCK ENGINE: BRASS  
 - DEAD BOLT: BRASS, NICKEL PLATED  
 - DEAD BOLT/McCOY STAR SLIDER: 2348 STAINLESS STEEL  
 - SPRINGS: 304 STAINLESS STEEL
- LOCK MODULE  
 - LOCK CASE AND COVER PLATE: 316 STAINLESS STEEL  
 - INTERNAL COMPONENTS: 316 STAINLESS STEEL  
 - SPRINGS: 316 STAINLESS STEEL  
 - SCREWS: 316 STAINLESS STEEL
- FOREND: BRASS, CHROME PLATED  
 MOUNTING SCREWS M4 POZIDRIVE: 316 STAINLESS STEEL  
 HANDLES: BRASS, SEE FINISH TABLE  
 ESCUTCHEONS, ACCENTS AND TURN KNOB: 316 STAINLESS STEEL, SEE TABLE FOR FINISH  
 DRIVEBAR: BRASS  
 WASHERS: PA6, WHITE  
 SET SCREWS 10/32": 316 STAINLESS STEEL

**NOTES**

- FOR PANEL PREPERATION INSTRUCTIONS, SEE DRAWING NUMBER J-MM-BB-C5C-DD-FFF SHEET 4
- FOR STRIKERS SEE J-MC-90-4XX
- FOR McCOY STAR SLIDER STRIKER SEE J-MC-90-6XX

**PART NUMBER SYSTEM**  
 MA-BB-C5C-DD-FF 1

PRODUCT [A]  
 DIRECTION [C]  
 DOOR THICKNESS [A]  
 HANDLE FINISH

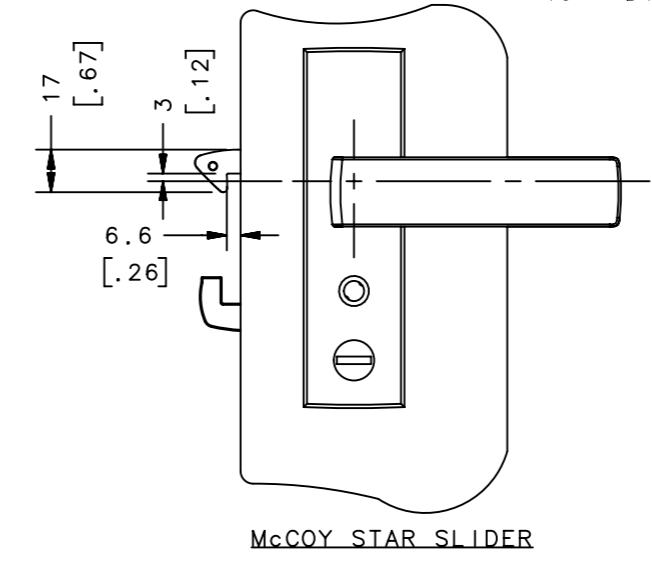
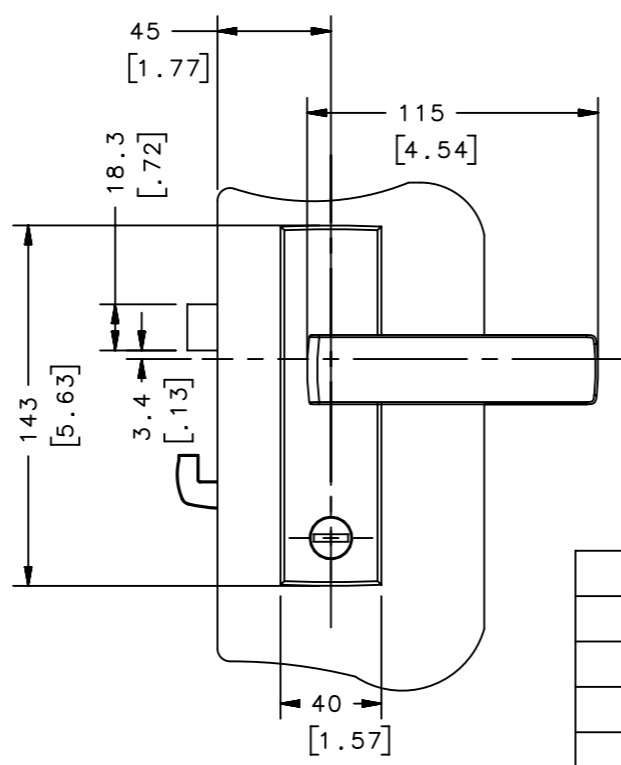
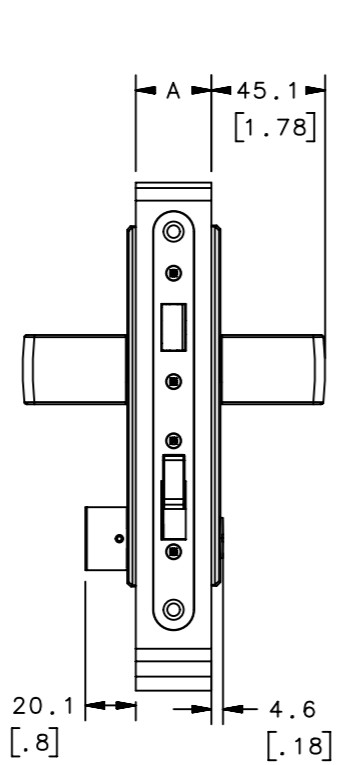
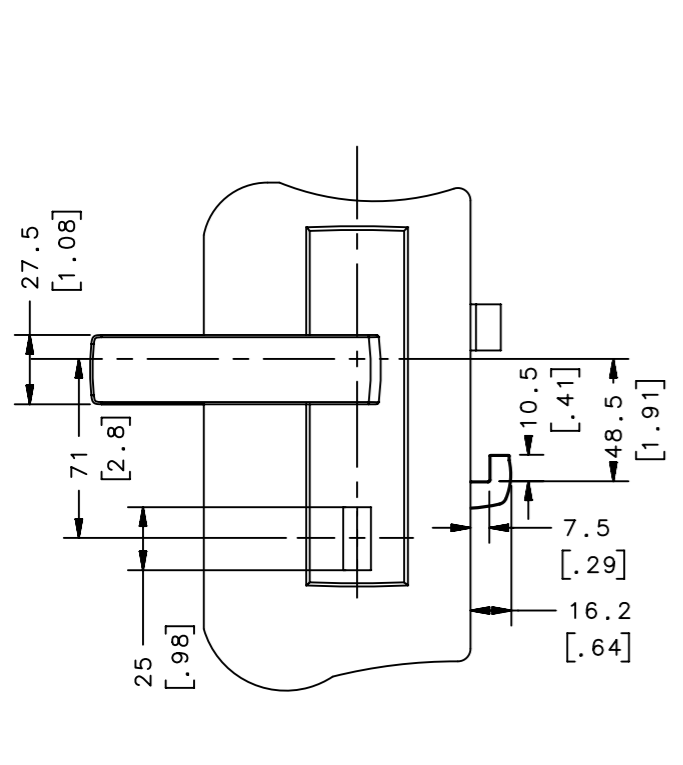
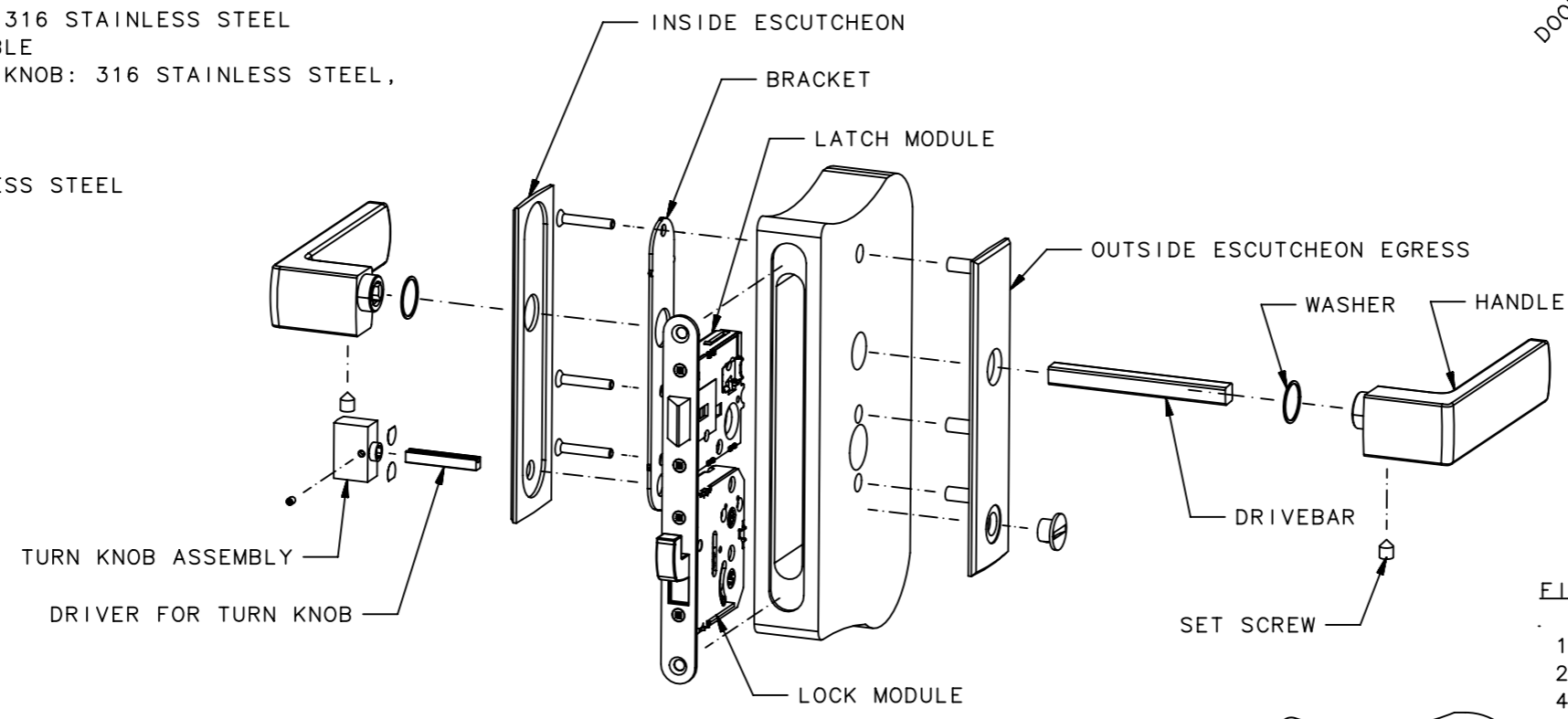
**PRODUCT [BB]**  
 02 - McCOY STAR  
 07 - McCOY STAR WITH DOUBLE SPRING BOLT  
 09 - McCOY STAR SLIDER

**DIRECTION [C]**  
 2 - RIGHT OUT [SLIDER R]  
 3 - RIGHT IN  
 4 - LEFT OUT [SLIDER L]  
 5 - LEFT IN

**HANDLE [DD]**  
 42 - NORDIC HANDLE

**DOOR THICKNESS [C3]**  
 0 - 22-30mm [7/8" - 1 3/16"]  
 1 - 28-37mm [1 1/8" - 1 1/2"]  
 2 - 36.5-45mm [1 7/16" - 1 3/4"]

**FINISH FOR HANDLE, PRIVACY AND ESCUTCHEONS [FF]**  
 10 - CHROME  
 20 - SATIN CHROME  
 40 - DIAMOND BRASS

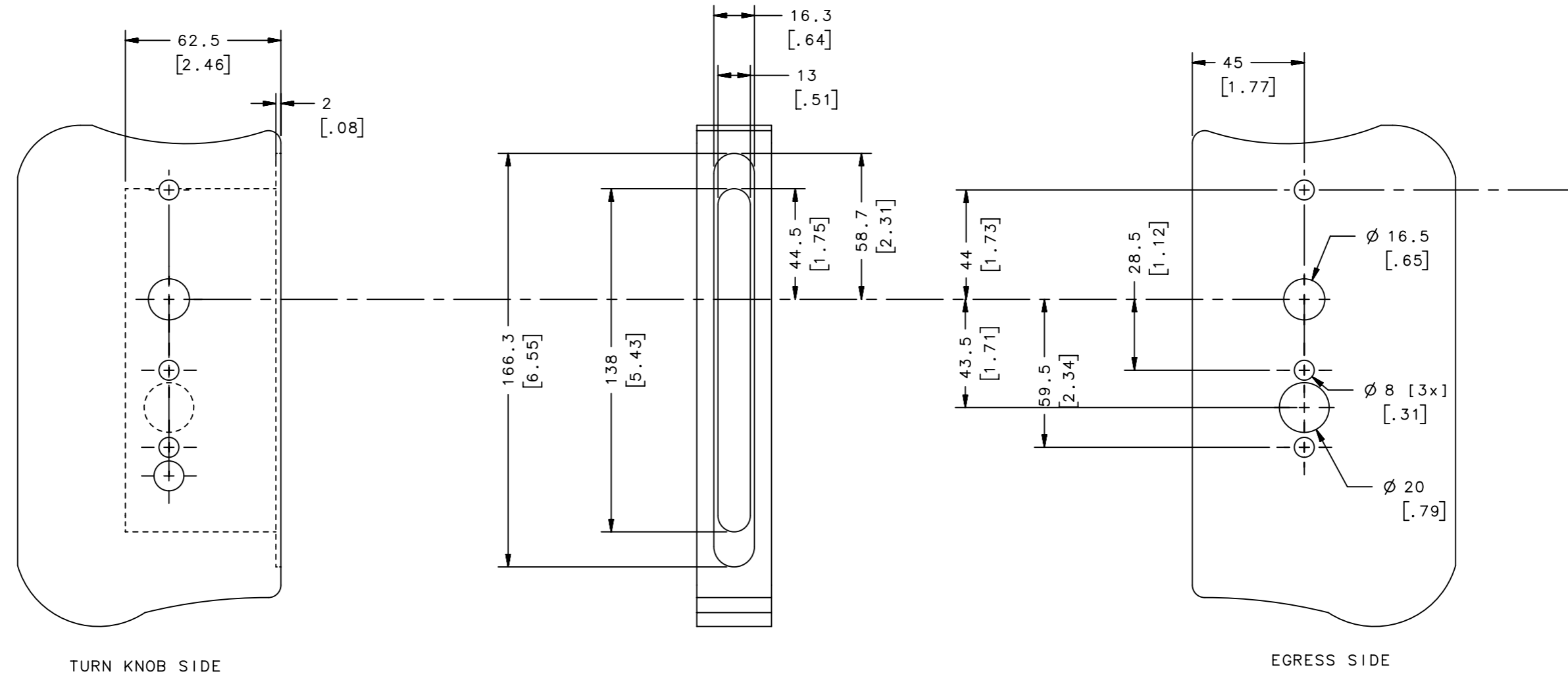


McCOY AND McCOY STAR WITH DOUBLE SPRING BOLT

THIRD ANGLE PROJECTION				 CONNECT · CREATE · INNOVATE		
TOLERANCES UNLESS OTHERWISE NOTED			DESCRIPTION			
ALL DIMENSIONS WITHOUT TOLERANCES ARE FOR REFERENCE ONLY.			McCOY STAR EGRESS - SQUARE			
PROPRIETARY ITEM	SIZE	SYSTEM	DWG NO.	J-MA-BB-C5C-DD-FFF		
EXCEPT FOR USES EXPRESSLY GRANTED IN WRITING, INFORMATION DISCLOSED HEREON IS CONFIDENTIAL AND ALL RIGHTS, PATENT AND OTHERWISE, ARE RESERVED BY SOUTHCO, INC.	A3	NX	DATE	05APR2007	SCALE 1:3 SHEET 3 OF 4	
PER ASME Y14.5M-1994			DRAWN BY	DA/HJ		

REVISION HISTORY			
REV	DATE	BY	DESCRIPTION
E	31MAR2021	CMS/MGG	PRN: P2021-0625

NOTE: PANEL PREPERATION FOR ASSEMBLIES MA-02-C5C-DD-FF1 AND MA-07-C5C-DD-FF1



THIRD ANGLE PROJECTION		<b>southco</b> <sup>®</sup> CONNECT • CREATE • INNOVATE	
MILLIMETERS [IN]			
TOLERANCES UNLESS OTHERWISE NOTED		DESCRIPTION McCOY STAR SQUARE PANEL PREPERATION	
ALL DIMENSIONS WITHOUT TOLERANCES ARE FOR REFERENCE ONLY.		SIZE A3	SYSTEM NX
PROPRIETARY ITEM EXCEPT FOR USES EXPRESSLY GRANTED IN WRITING, INFORMATION DISCLOSED HEREON IS CONFIDENTIAL AND ALL RIGHTS, PATENT AND OTHERWISE, ARE RESERVED BY SOUTHCO, INC.		DWG NO. J-MA-BB-C5C-DD-FFF	DATE 05APR2007
PER ASME Y14.5M-1994		DRAWN BY DA/HJ	SCALE 1:2
		SHEET 4 OF 4	