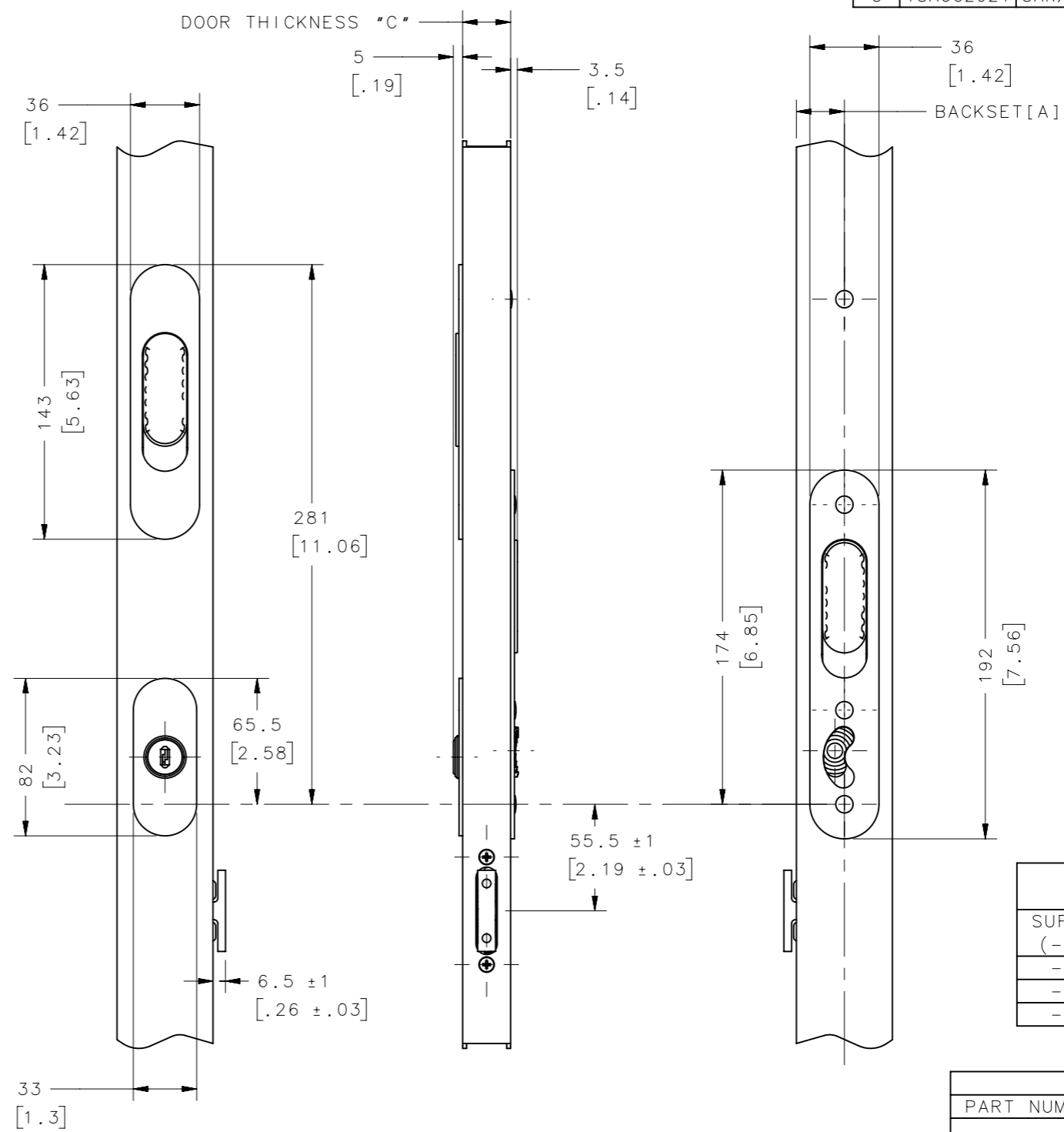
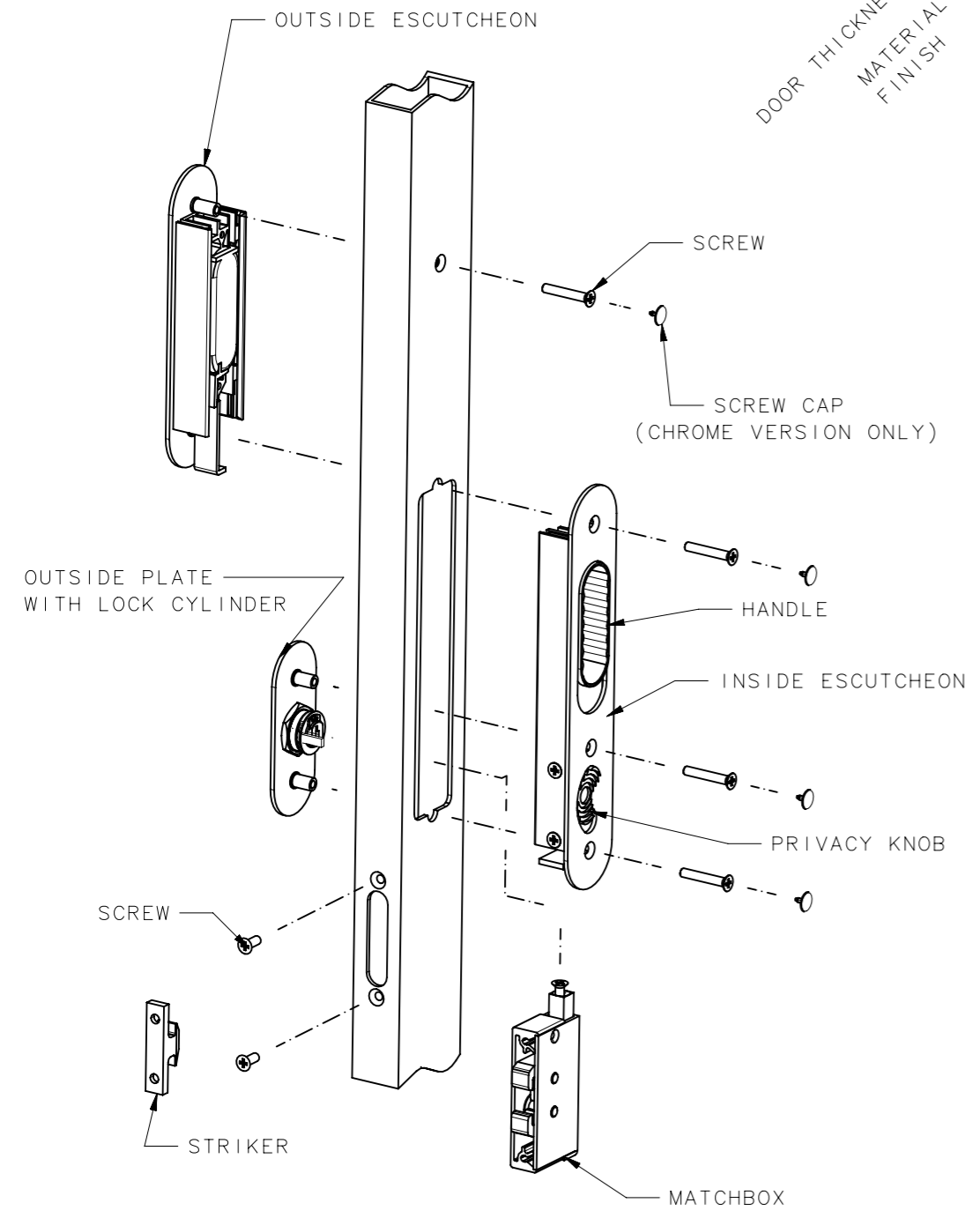


REVISION HISTORY			
REV	DATE	BY	DESCRIPTION
C	18AUG2021	SAK/MBT	PRN: P2021-1651

PART NUMBER SYSTEM

MM-01-11C-YY

DOOR THICKNESS
MATERIAL &
FINISH



MATERIAL AND FINISH

- ALL VERSIONS
- HANDLES AND PRIVACY KNOB: POM.
 - SCREWS AND WASHERS: 316 STAINLESS STEEL.
 - SPRINGS: 304 STAINLESS STEEL.
 - MATCHBOX HOUSING AND PLUNGER: ALUMINIUM NATURAL ANODIZED.
 - MATCHBOX HOOK AND STRIKER: BRASS, NICKEL PLATED.
 - LOCK CYLINDER ASSEMBLY: PA12 GF, BRASS.
- MM-01-10C-10
- PLATE: BRASS, SEE TABLE FOR FINISH.
- MM-01-10C-50 & MM-01-10C-60
- PLATE: ALUMINIUM, SEE TABLE FOR FINISH
 - ESCUTCHEONS: ALUMINIUM, SEE TABLE FOR FINISH.

NOTES

- DOOR THICKNESS RANGE "C":
20.5mm - 38mm [13/16" - 1 1/2"]
- BACKSET [A]:
- MIN .21mm. [53/64"]
- MAX. 38.5mm. [1 33/64"]
- FOR PANEL PREPERATION INSTRUCTIONS, SEE DRAWING NUMBER J-MM-01-11C-YY-2
- SEE SOUTHCO MARINE HANDBOOK FOR MORE DETAILED INSTALLATION INSTRUCTIONS.

ACCESSORIES

	PART NUMBER
MOUNTING TOOL STRIKER	MM-90-103-41
TOP STOP	MM-7520
RAMP TOP STOP	MM-90-201-60
HIGH SEAS HANDLE CHROME	MM-7660
HIGH SEAS HANDLE BLACK	MM-7683

HANDLES AND ESCUTCHEON FINISH	
SUFFIX (-YY)	FINISH
-10	BRIGHT CHROME
-50	BLACK POWDER COAT
-60	NATURAL ANODIZED ALUMINIUM

DOOR THICKNESS (C)	
PART NUMBER	THICKNESS RANGE
MM-01-110-YY	20.5 - 23mm (13-16 - 29/32")
MM-01-111-YY	22.5 - 27mm (7/8 - 1 1/16")
MM-01-112-YY	27 - 34.5mm (1 1/16 - 1 3/8")
MM-01-113-YY	28.5 - 38mm (1 1/8 - 1 1/2")

THIRD ANGLE PROJECTION

MILLIMETERS [IN]

TOLERANCES UNLESS OTHERWISE NOTED

ALL DIMENSIONS WITHOUT TOLERANCES ARE FOR REFERENCE ONLY.

PER ASME Y14.5M-1994

PROPRIETARY ITEM
EXCEPT FOR USES EXPRESSLY GRANTED IN WRITING, INFORMATION DISCLOSED HEREON IS CONFIDENTIAL AND ALL RIGHTS, PATENT AND OTHERWISE, ARE RESERVED BY SOUTHCO, INC.

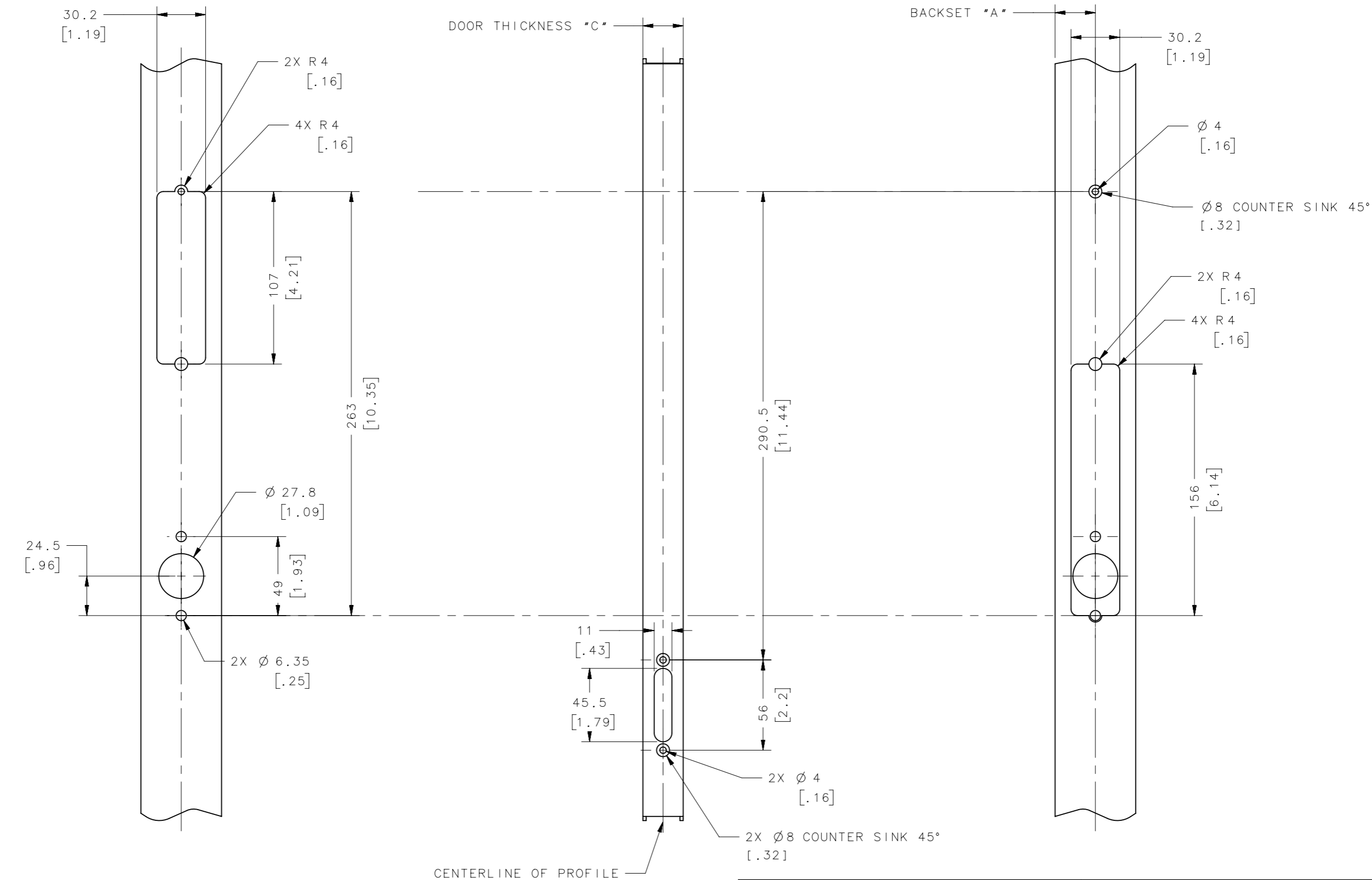
southco[®]
CONNECT • CREATE • INNOVATE

DESCRIPTION: TALON WITH KEY LOCKING

SIZE: A3 SYSTEM: NX DWG NO.: J-MM-01-11C-YY

DRAWN BY: MF/HJ DATE: 22OCT2009 SCALE: 0.3:1 SHEET: 1 OF 2

REVISION HISTORY			
REV	DATE	BY	DESCRIPTION
C	18AUG2021	SAK/MBT	PRN: P2021-1651



NOTES:
 PANEL PREPERATION FOR ASSEMBLIES MM-01-11C-YY.

PROPRIETARY ITEM <small>EXCEPT FOR USES EXPRESSLY GRANTED IN WRITING, INFORMATION DISCLOSED HEREON IS CONFIDENTIAL AND ALL RIGHTS, PATENT AND OTHERWISE, ARE RESERVED BY SOUTHCO, INC.</small>	THIRD ANGLE PROJECTION			
	MILLIMETERS [IN]			
	TOLERANCES UNLESS OTHERWISE NOTED	DESCRIPTION		
	ALL DIMENSIONS WITHOUT TOLERANCES ARE FOR REFERENCE ONLY.	TALON WITH KEY LOCKING PANEL PREPERATION		
PER ASME Y14.5M-1994	SIZE A3	SYSTEM NX	DWG NO. J-MM-01-11C-YY-2	
	DRAWN BY MF/HJ	DATE 22OCT2009	SCALE 1:2.5	SHEET 2 OF 2