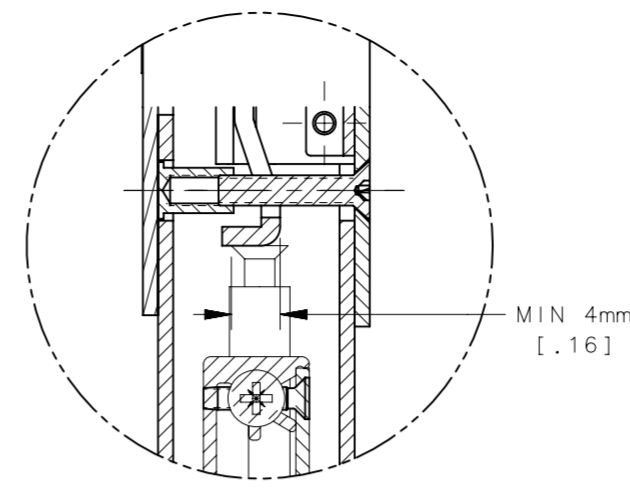
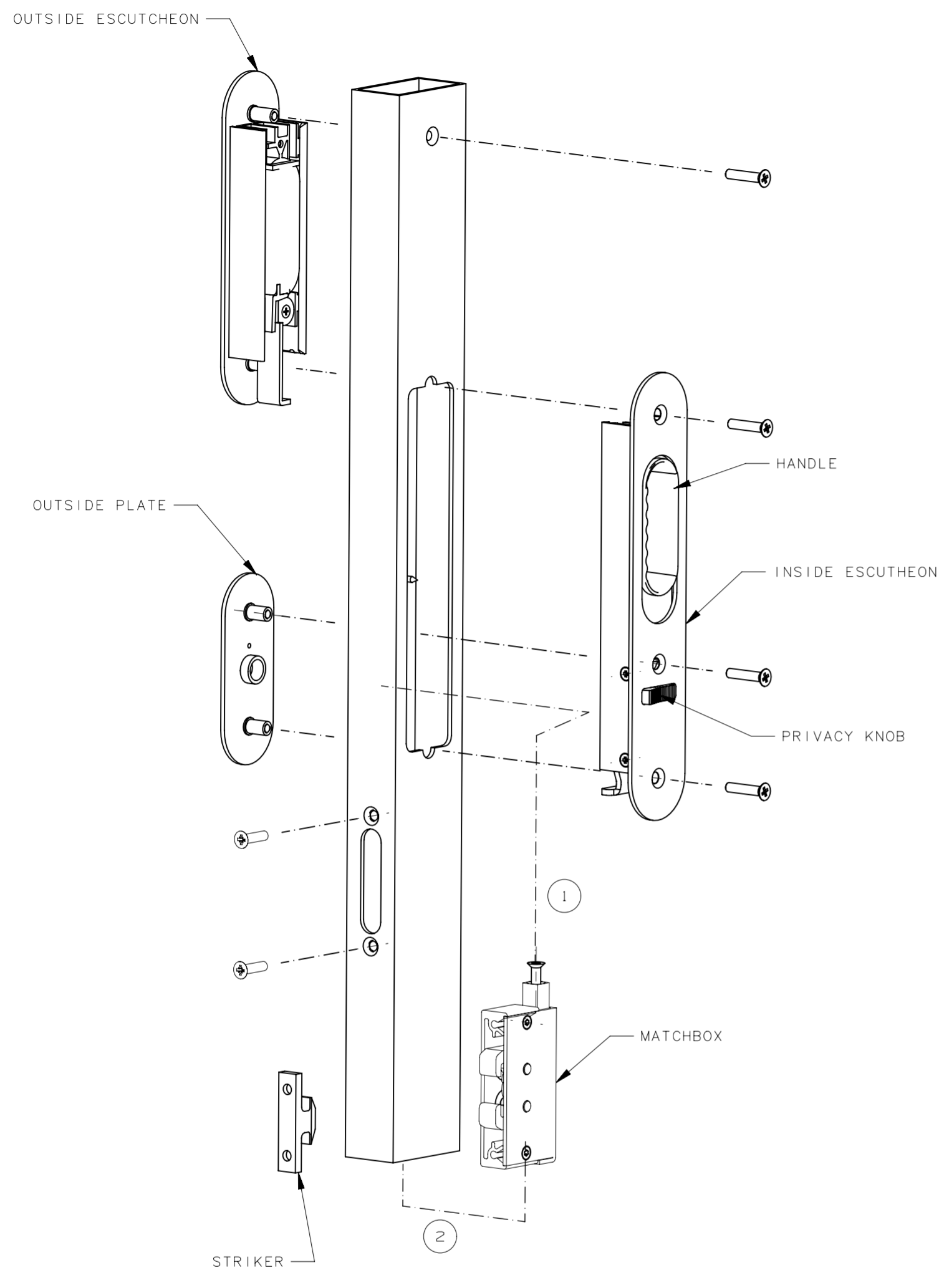
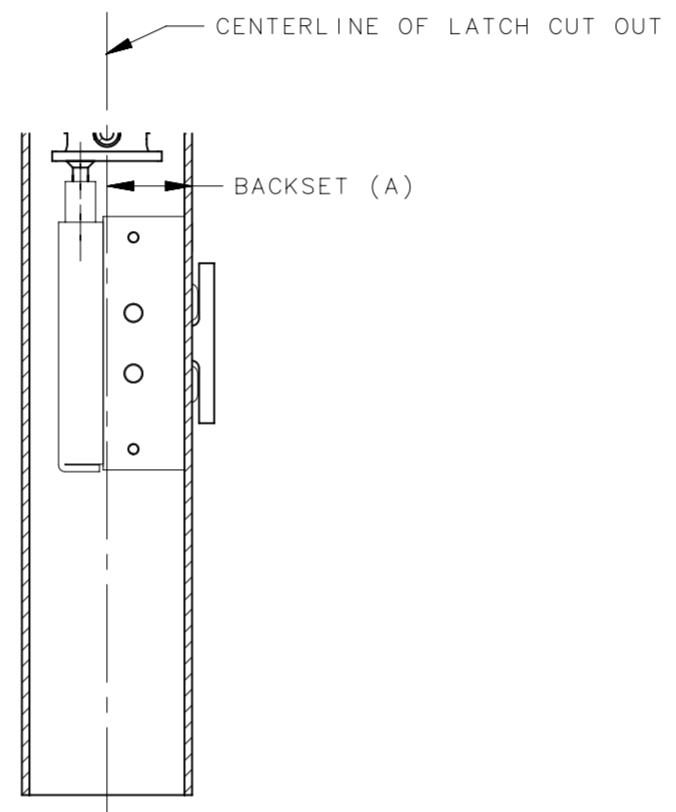


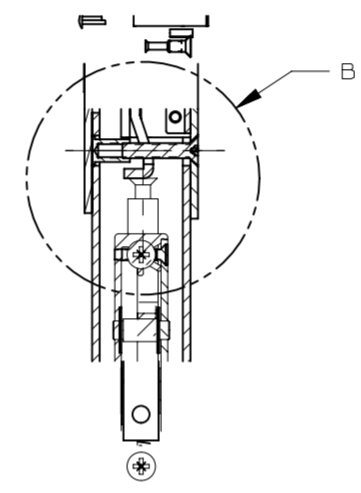
REVISION HISTORY			
REV	DATE	BY	DESCRIPTION
B	14MAY2021	KSH/VK	PRN: P2021-1019



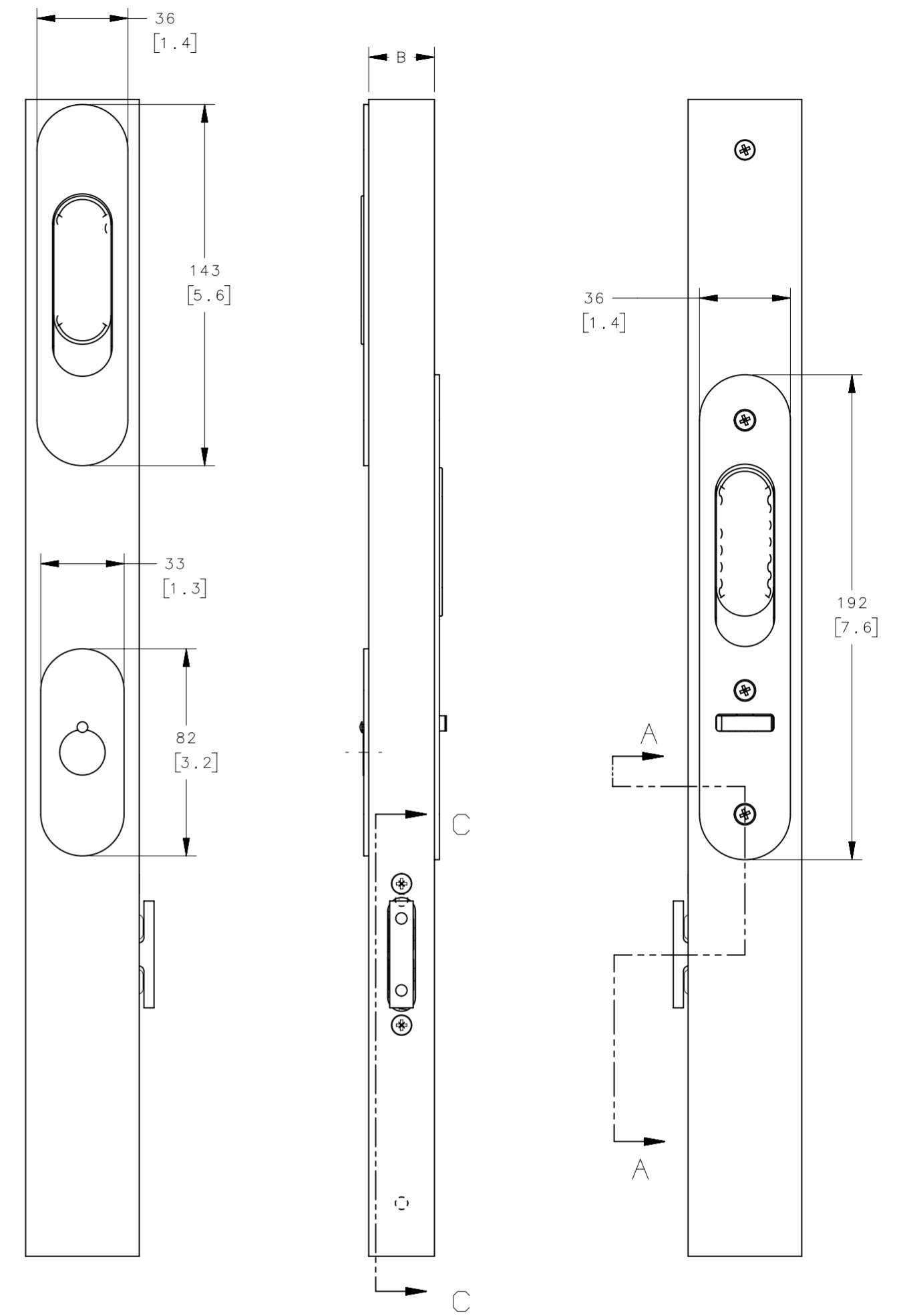
DETAIL B
SCALE 1:1



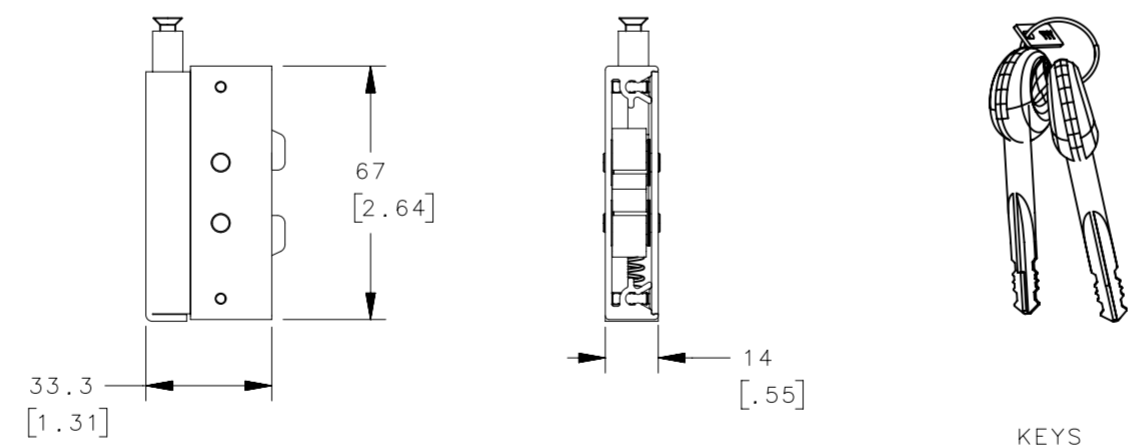
SECTION C - C



SECTION A - A



MATCHBOX DIMENSIONS



FOR PANEL PREPERATION INSTRUCTIONS.
SEE DRAWING NUMBER J-MM-01-1

NOTES:
SCREW KIT INCLUDES:
-SCREWS
-KEYS

MATCHBOX CAN BE INSTALLED
IN TWO ALTERNATIVE WAYS.
SEE NOTES 1, 2

MAX WALL THICKNESS 9.5mm (0.37 INCH)

BRACKET (A):
MIN. BACKSET: 17mm [0.67 INCH]
MAX. BACKSET: 38MM [1.5 INCH]

MATERIAL AND FINISH:

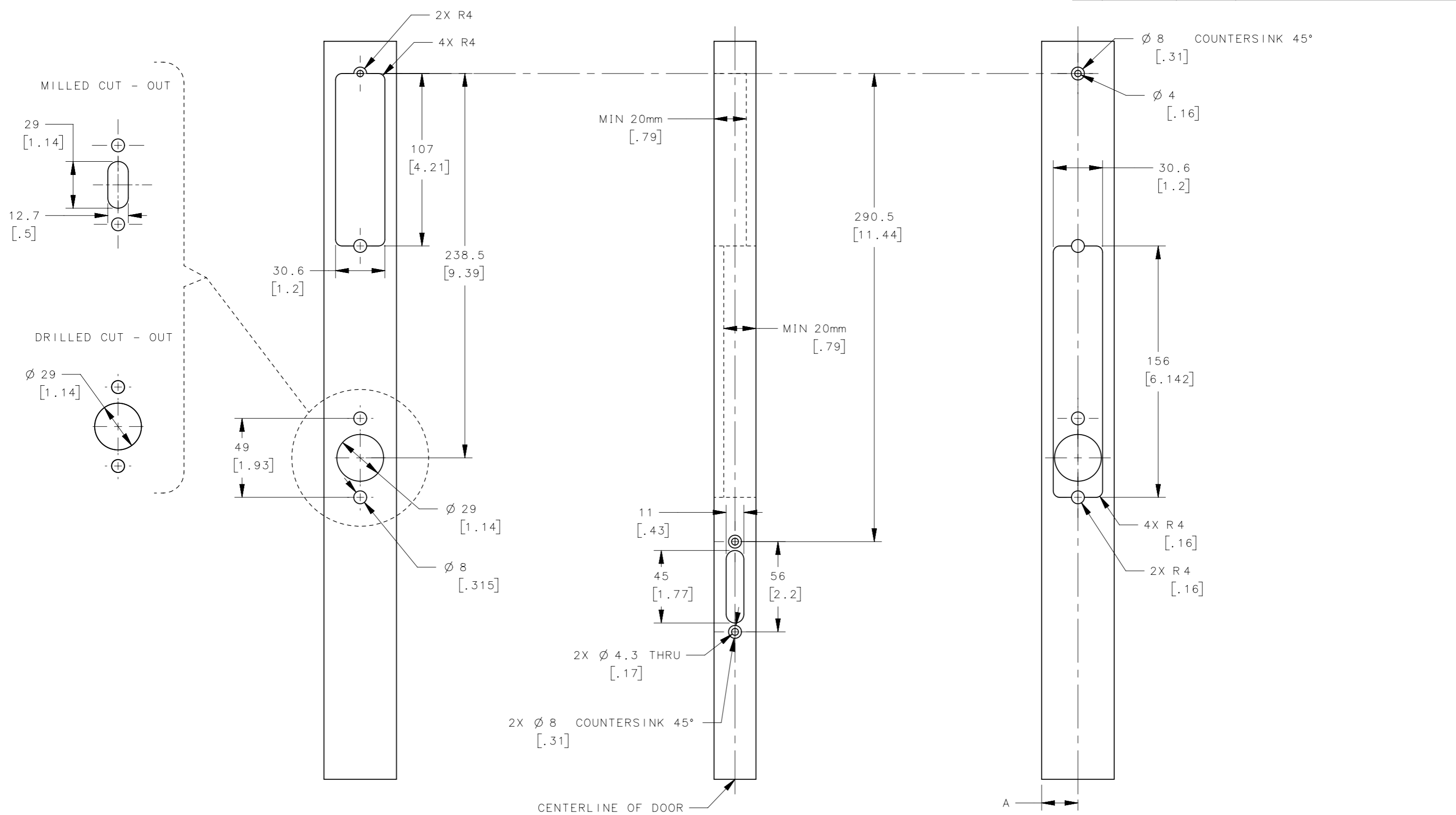
ALL VERSIONS:
PRIVACY KNOB: BRASS, BRIGHT CHROME PLATED
MOUNTING SCREWS M4 POZIDRIVE: 316 STAINLESS STEEL.
WASHERS: NYLON, NATURAL.
SPRINGS: 300 SERIES STAINLESS STEEL.
HANDLES AND OTHER PLASTIC COMPONENTS: ACETAL, BLACK.
MATCHBOX HOUSING AND PLUNGER: ALUMINIUM, NATURAL ANODIZED.
MATCHBOX HOOKS AND STRIKER: BRASS, NICKEL PLATED
MM-01-13X-10
ESCUTCHEONS: ALUMINIUM, BRIGHT CHROME PLATED.
OUTSIDE PLATE: BRASS, BRIGHT CHROME PLATED
MM-01-13X-50
ESCUTCHEONS AND OUTSIDE PLATE: ALUMINIUM, BLACK ANODIZED.

ACCESSORIES	PART NUMBER
MOUNTING TOOL STRIKER	MM-90-103-41
TOP STOP	MM-7520
HIGH SEAS HANDLE CHROME	MM-7660
HIGH SEAS HANDLE BLACK	MM-7683
RAMP FOR TOP STOP	MM-90-201-60

DOOR THICKNESS RANGE	20.5 - 23mm [0.8 - 0.9]	23 - 28.5mm [0.9 - 1.12]	28.5 - 33.5mm [1.12 - 1.32]	33.5mm - 38mm [1.32 - 1.5]
STAR TALON STANDARD OPTION, CHROME	MM-01-130-10	MM-01-131-10	MM-01-132-10	MM-01-133-10
STAR TALON STANDARD OPTION, BLACK	MM-01-130-50	MM-01-131-50	MM-01-132-50	MM-01-133-50

THIRD ANGLE PROJECTION	MILLIMETERS [IN]		 CONNECT · CREATE · INNOVATE	
ALL DIMENSIONS WITHOUT TOLERANCES ARE FOR REFERENCE ONLY.		DESCRIPTION STAR TALON ASSEMBLY		
PROPRIETARY ITEM EXCEPT FOR USES EXPRESSLY GRANTED IN WRITING, INFORMATION DISCLOSED HEREON IS CONFIDENTIAL AND ALL RIGHTS, PATENT AND OTHERWISE, ARE RESERVED BY SOUTHCO, INC.		SIZE A2	SYSTEM NX	DWG NO. J-MM-01
PER ASME Y14.5M-1994		DRAWN BY DA	DATE 02JUN2004	SCALE 1:2
				SHEET 1 OF 2

REVISION HISTORY			
REV	DATE	BY	DESCRIPTION
B	14MAY2021	KSH/VK	PRN: P2021-1019



- NOTES:
- PANEL PREPARATION FOR ASSEMBLES MM-01-13X-XX.
 - MIN DEPTH FOR ESCUTCHEON CUTOUTS IS 20mm [0.8 inches]

THIRD ANGLE PROJECTION				 CONNECT • CREATE • INNOVATE		
TOLERANCES UNLESS OTHERWISE NOTED		DESCRIPTION				
ALL DIMENSIONS WITHOUT TOLERANCES ARE FOR REFERENCE ONLY.		STAR TALON ASSEMBLY				
PROPRIETARY ITEM	SIZE	SYSTEM	DWG NO.	J-MM-01-1		
EXCEPT FOR USES EXPRESSLY GRANTED IN WRITING, INFORMATION DISCLOSED HEREON IS CONFIDENTIAL AND ALL RIGHTS, PATENT AND OTHERWISE, ARE RESERVED BY SOUTHCO, INC.	A3	NX				
PER ASME Y14.5M-1994	DRAWN BY	DATE	SCALE	SHEET		
	DA	02JUN2004	1:2	2 OF 2		