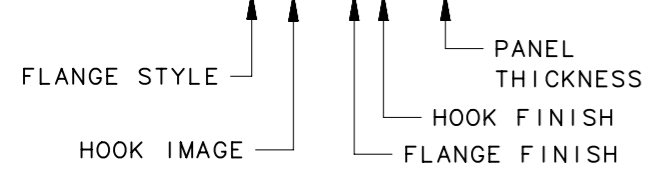
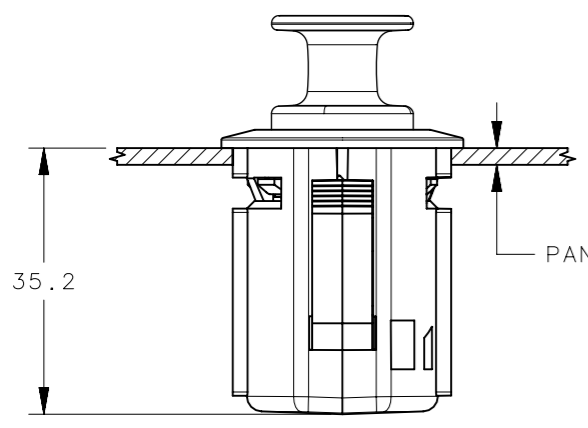


REVISION HISTORY			
REV	DATE	BY	DESCRIPTION
L	12DEC2023	JD/VK	PRN:P2023-2310

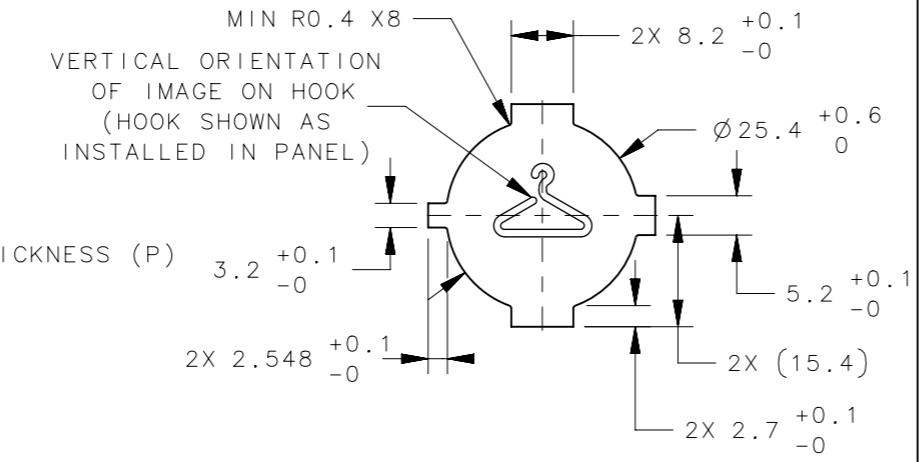
ASSEMBLY PART NUMBER  
MP-07-WWV-YZ-P



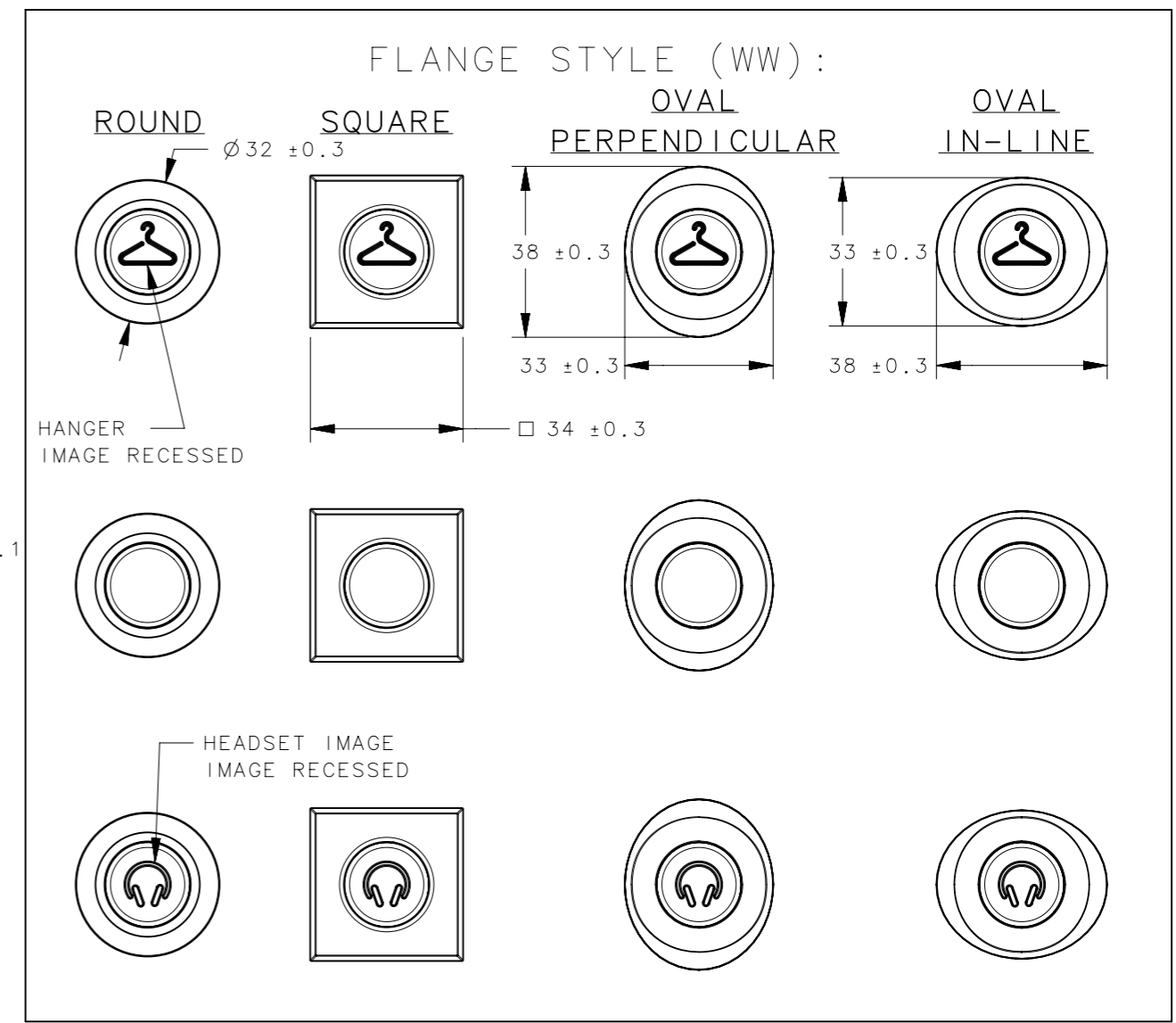
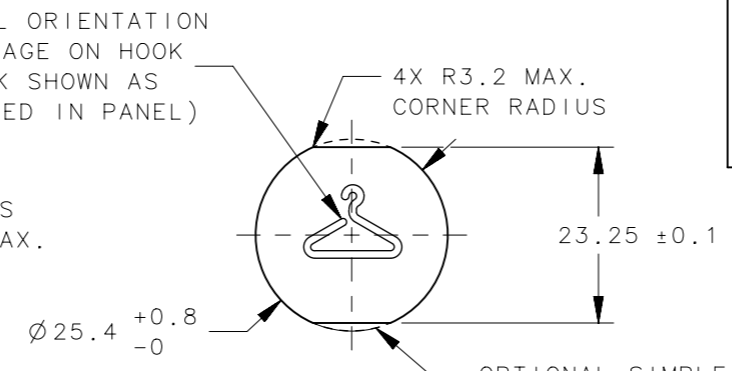
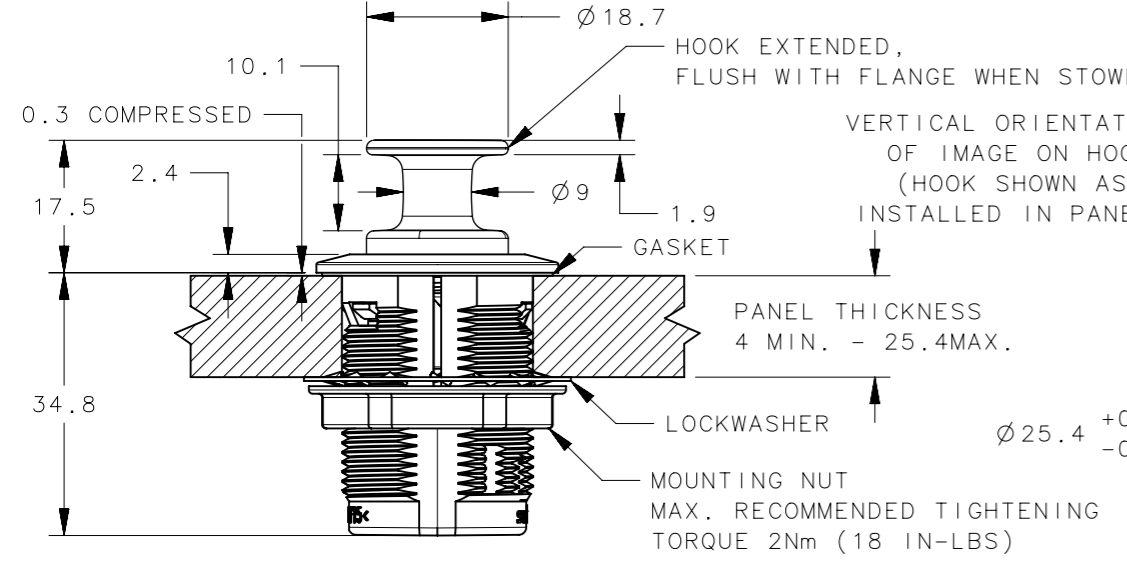
- FLANGE STYLE (WW)**
- 11 - OVAL PERPENDICULAR
  - 12 - OVAL IN-LINE
  - 21 - SQUARE
  - 31- ROUND
- HOOK IMAGE (V)**
- 2 - HANGER
  - 3 - NONE
  - 4 - HEADSET
- FLANGE FINISH (Y)**
- 1 - POLISHED CHROME
  - 2 - SATIN CHROME
  - 3 - BRUSHED NICKEL
  - 5 - BLACK POWDER COAT (FOR IMAGE STYLE 3 - BLANK ONLY)
- HOOK FINISH (Z)**
- 1 - POLISHED CHROME
  - 2 - SATIN CHROME
  - 3 - BRUSHED NICKEL
  - 5 - BLACK POWDER COAT (FOR IMAGE STYLE 3 - BLANK ONLY)
- PANEL THICKNESS (P)**
- OMIT- MOUNTING NUT 4-25.4 [0.16-1.01]
  - 0 - SNAP-IN 1.1-2.9 [0.043-.114]
  - 1 - SNAP-IN 2.9-5.3 [.114-.209]
  - 2 - SNAP-IN 5.3-7.0 [.209-.276]



**SNAP IN**



**MOUNTING NUT**



COMPONENT	MATERIAL	FINISH
COAT HOOK ASSEMBLY	-	-
HOOK	DIE CAST ZINC	SEE TABLE (Z)
RACHET	ACETAL	BLACK
RACHET SPRING	STAINLESS STEEL	PASSIVATED
SHAFT	STAINLESS STEEL	PASSIVATED
FLANGE	DIE CAST ZINC	SEE TABLE (Y)
HOOK SPRING	STAINLESS STEEL	PASSIVATED
HOUSING	GF NYLON	BLACK
GASKET	NEOPRENE	BLACK
LOCKWASHER	STAINLESS STEEL	PASSIVATED
MOUNTING NUT	GF NYLON	BLACK

THIRD ANGLE PROJECTION

MILLIMETERS [IN]

TOLERANCES UNLESS OTHERWISE NOTED

ALL DIMENSIONS WITHOUT TOLERANCES ARE FOR REFERENCE ONLY.

PER ASME Y14.5M-2009

PROPRIETARY ITEM  
EXCEPT FOR USES EXPRESSLY GRANTED IN WRITING, INFORMATION DISCLOSED HEREON IS CONFIDENTIAL AND ALL RIGHTS, PATENT AND OTHERWISE, ARE RESERVED BY SOUTHCO, INC.

**southco**<sup>®</sup>  
CONNECT • CREATE • INNOVATE

DESCRIPTION  
MP EXTENDABLE COAT/HEADSET HOOK

SIZE: A3 SYSTEM: NX DWG NO.: J-MP-07-1

DRAWN BY: ACH/TL DATE: 19MAY2009 SCALE: DNS SHEET: 1 OF 1