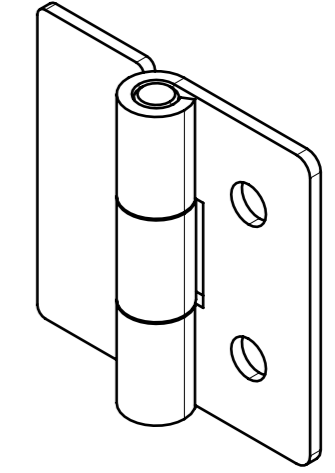
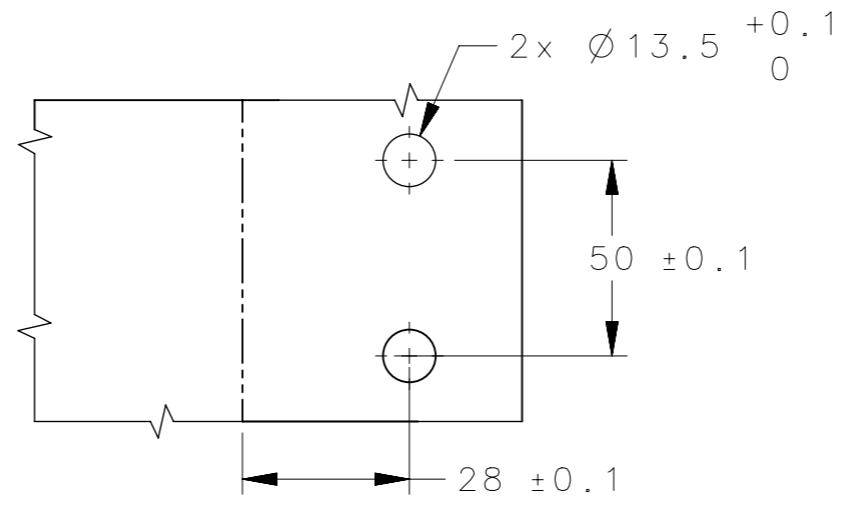
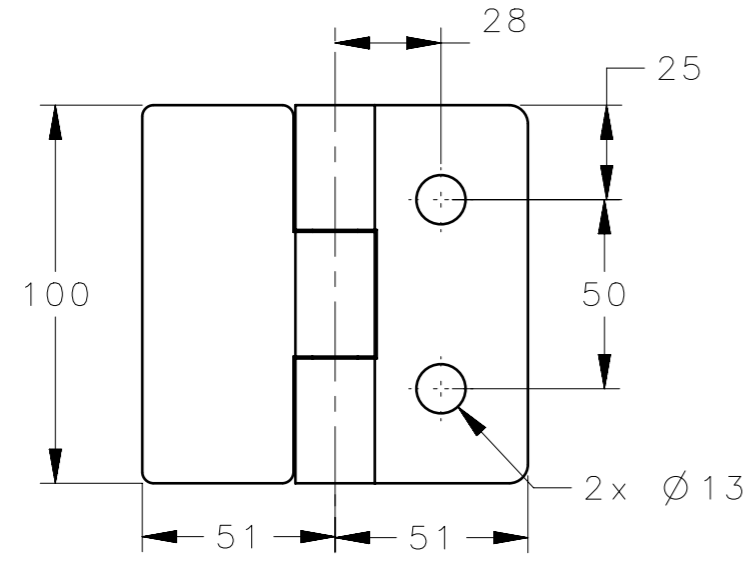
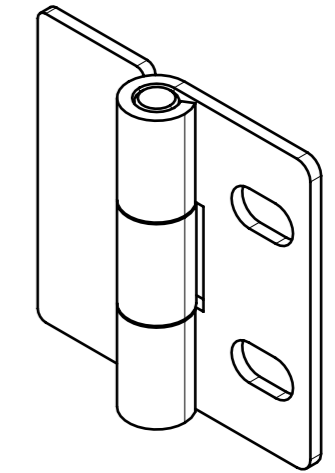
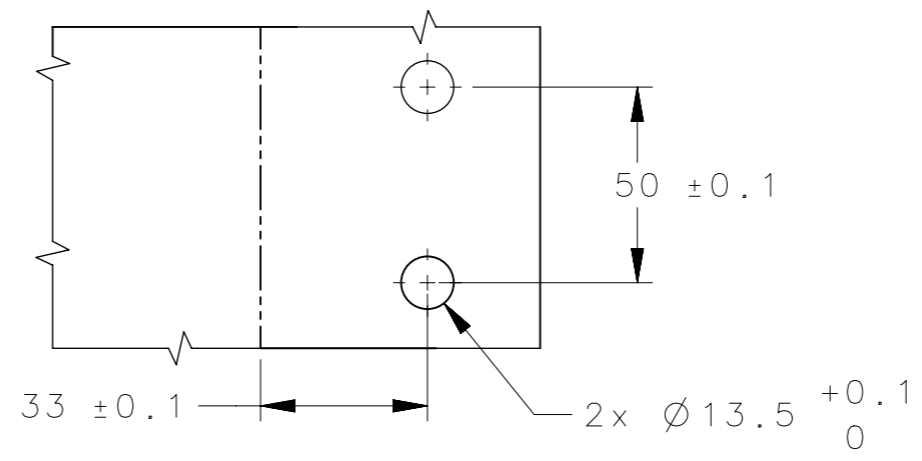
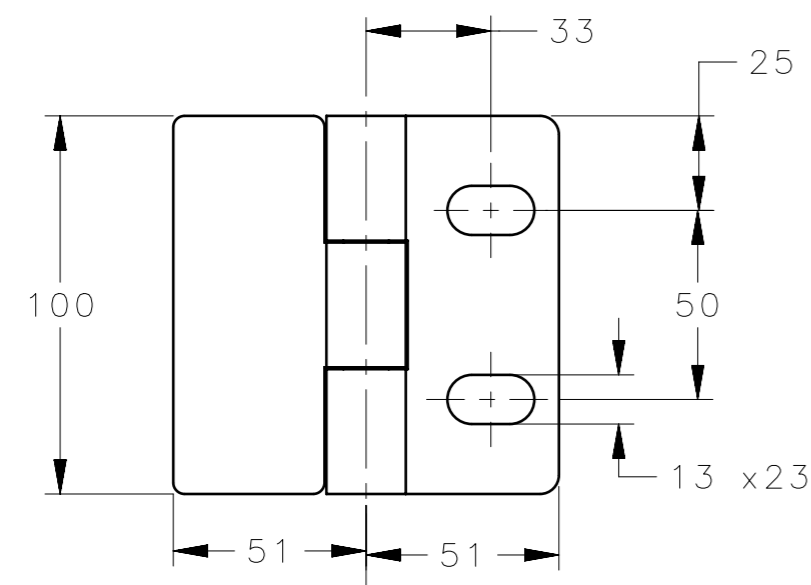


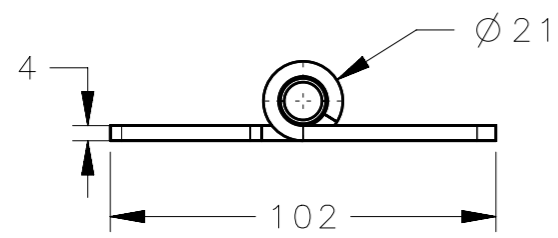
| REVISION HISTORY | | | |
|------------------|-----------|--------|-------------------|
| REV | DATE | BY | DESCRIPTION |
| A | 27MAY2024 | SBK/VK | IPN: IP-2024-1220 |



N6-DHIM-100102



N6-DHIM-100102-SL



NOTES:-
 1. MOUNTING SCREWS NOT SUPPLIED.
 2. OPENING ANGLE 180°

PANEL PREPARATION

PANEL PREPARATION

| | | | | | |
|--|---------------------|---|------------------|---------------------|------------------|
| N6-DHIM-100102-SL | N6-HEAY DUTY HINGES | MS | BLUE ZINC PLATED | 33 | SLOT |
| N6-DHIM-100102 | N6-HEAY DUTY HINGES | MS | BLUE ZINC PLATED | 28 | HOLE |
| SOUTHCO PART NUMBER | | DESCRIPTION | | MATERIAL | FINISH |
| CPB NUMBER | | THIRD ANGLE PROJECTION | | MOUNTING STYLE | |
| 2024-0034 | | MILLIMETERS [IN] | | AA | |
| SURFACE AREA | | TOLERANCES UNLESS OTHERWISE NOTED | | DESCRIPTION | |
| mm ² | | ALL DIMENSIONS WITHOUT TOLERANCES ARE FOR REFERENCE ONLY. | | N6-HEAY DUTY HINGES | |
| VOLUME | | PER ASME Y14.5M-2009 | | SIZE | SYSTEM |
| mm ³ | | DRAWN BY | | DATE | DWG NO. |
| PROPRIETARY ITEM | | SBK/VK | | 16FEB2024 | J-N6-DHIM-100102 |
| EXCEPT FOR USES EXPRESSLY GRANTED IN WRITING, INFORMATION DISCLOSED HEREON IS CONFIDENTIAL AND ALL RIGHTS, PATENT AND OTHERWISE, ARE RESERVED BY SOUTHCO, INC. | | SCALE | | SHEET | |
| | | 1:1 | | 1 OF 1 | |

