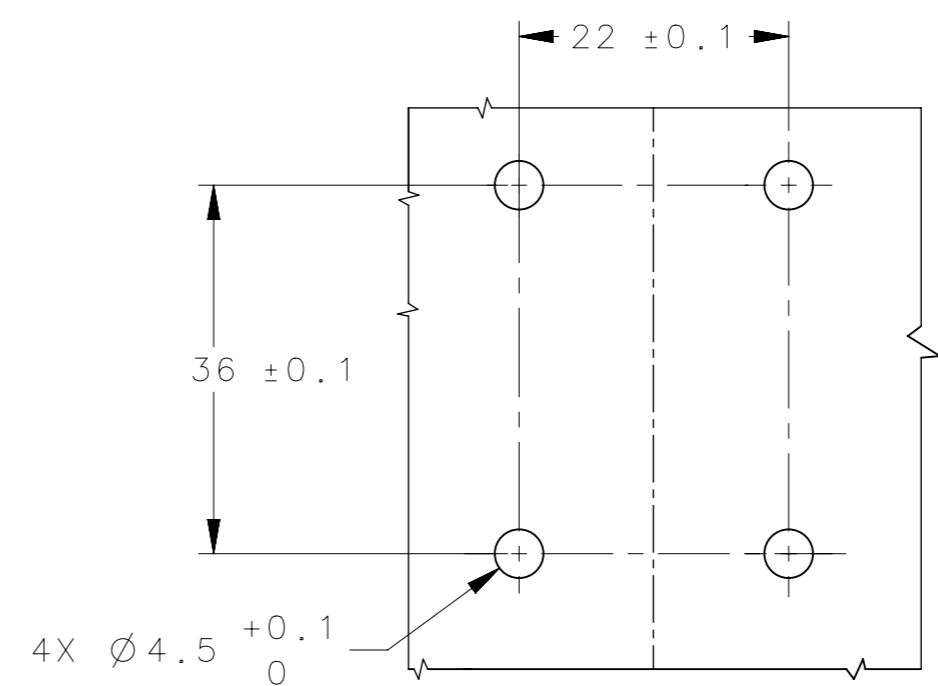
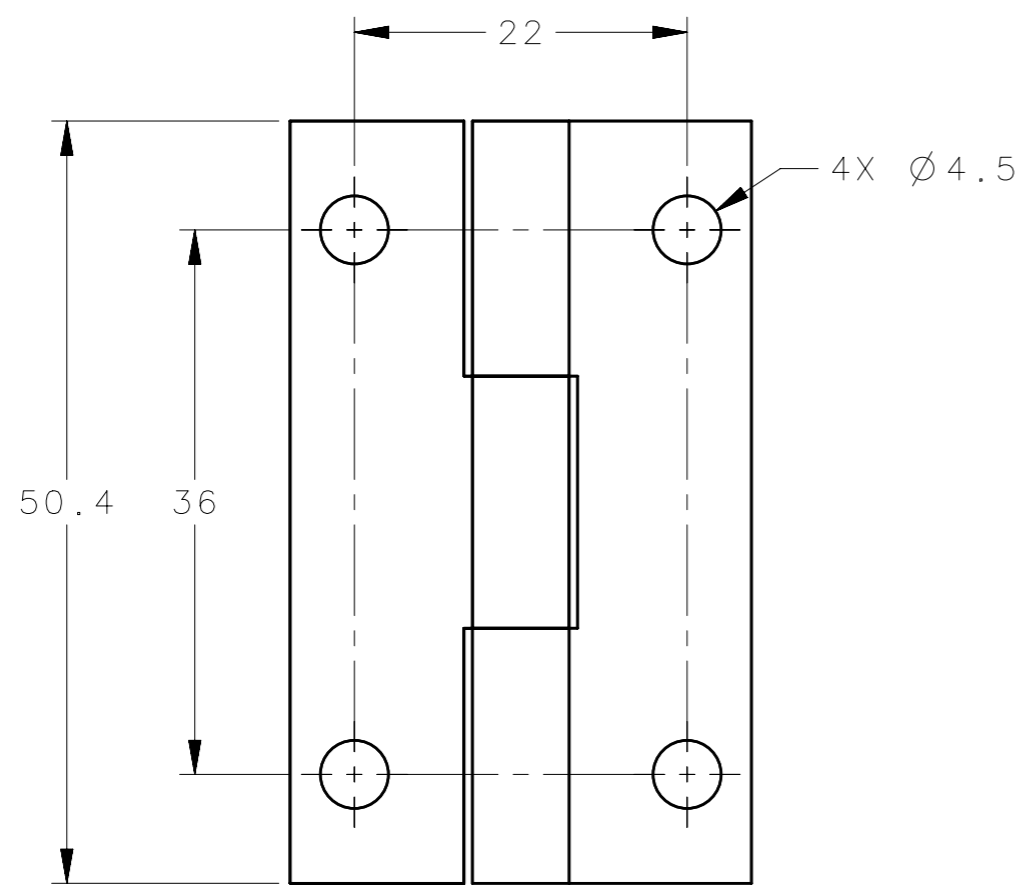
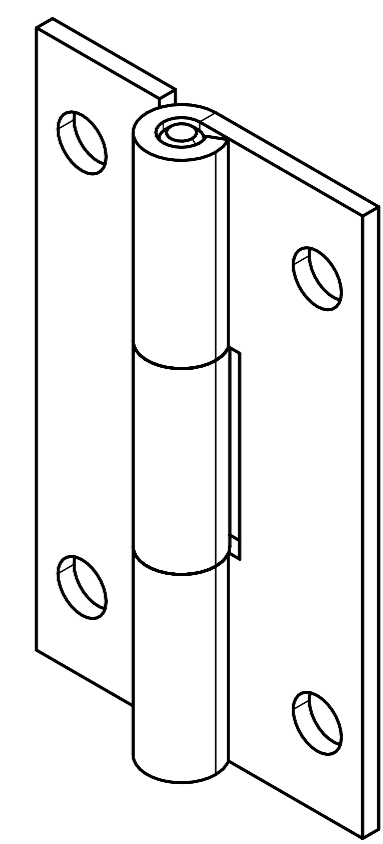
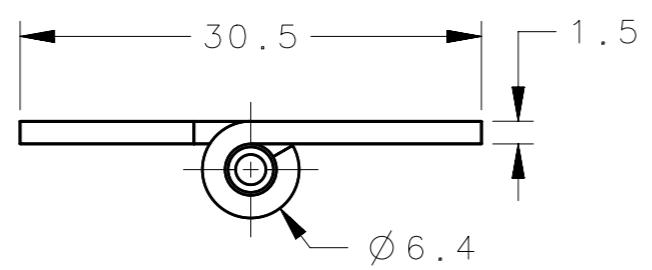


REVISION HISTORY			
REV	DATE	BY	DESCRIPTION
A	06AUG2024	SBK/VK	IPN: IP-2024-1886



PANEL PREPRATION

- NOTES:-
1. MOUNTING SCREWS NOT SUPPLIED.
 2. OPENING ANGLE 180°.

N6-DHIM-5030-SS	STRAP HINGE	SS-304	ELECTRO POLISHING
N6-DHIM-5030	STRAP HINGE	MS	BLUE ZINC PLATED
SOUTHCO PART NUMBER	DESCRIPTION	MATERIAL	FINISH
CPB NUMBER 2024-0351	THIRD ANGLE PROJECTION		
SURFACE AREA mm ²	MILLIMETERS [IN]		
VOLUME mm ³	TOLERANCES UNLESS OTHERWISE NOTED	DESCRIPTION STRAP HINGE	
PROPRIETARY ITEM <small>EXCEPT FOR USES EXPRESSLY GRANTED IN WRITING, INFORMATION DISCLOSED HEREON IS CONFIDENTIAL AND ALL RIGHTS, PATENT AND OTHERWISE, ARE RESERVED BY SOUTHCO, INC.</small>	ALL DIMENSIONS WITHOUT TOLERANCES ARE FOR REFERENCE ONLY.	SIZE A3	SYSTEM NX
PER ASME Y14.5M-2009	DRAWN BY SBK	DATE 07JUN2024	DWG NO. J-N6-DHIM-5030
		SCALE 2:1	SHEET 1 OF 1