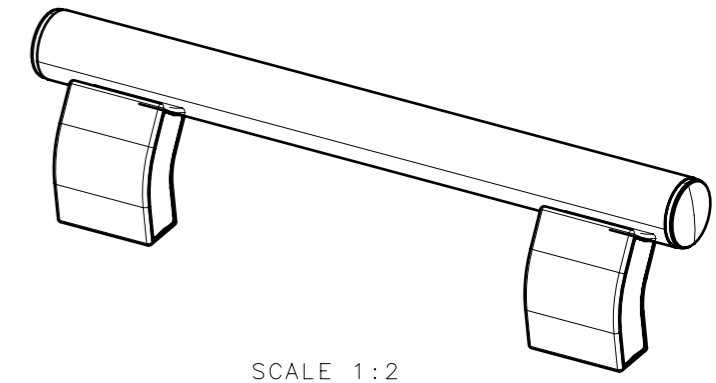
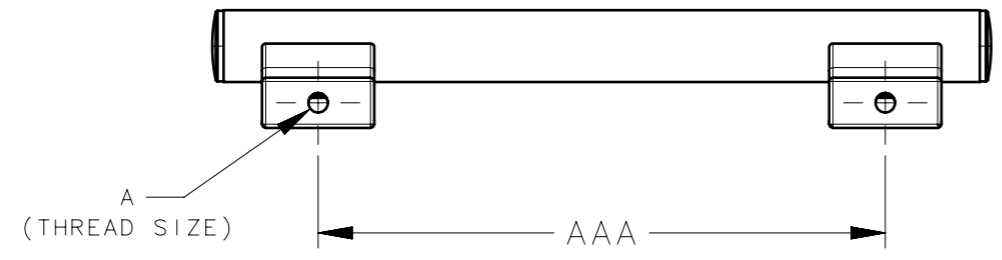
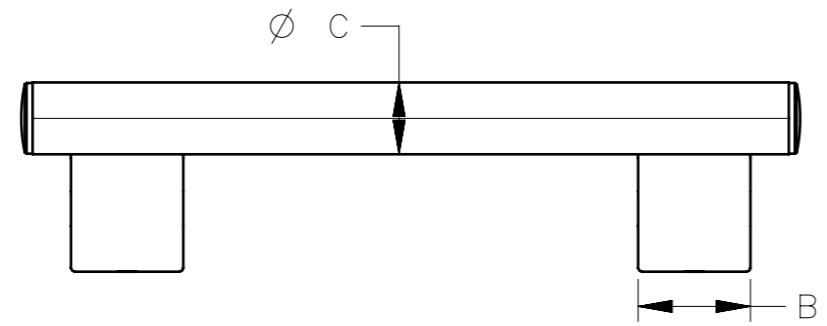
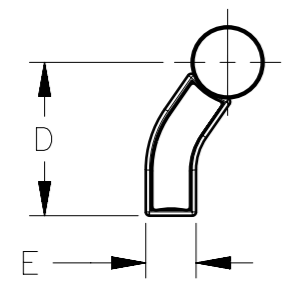
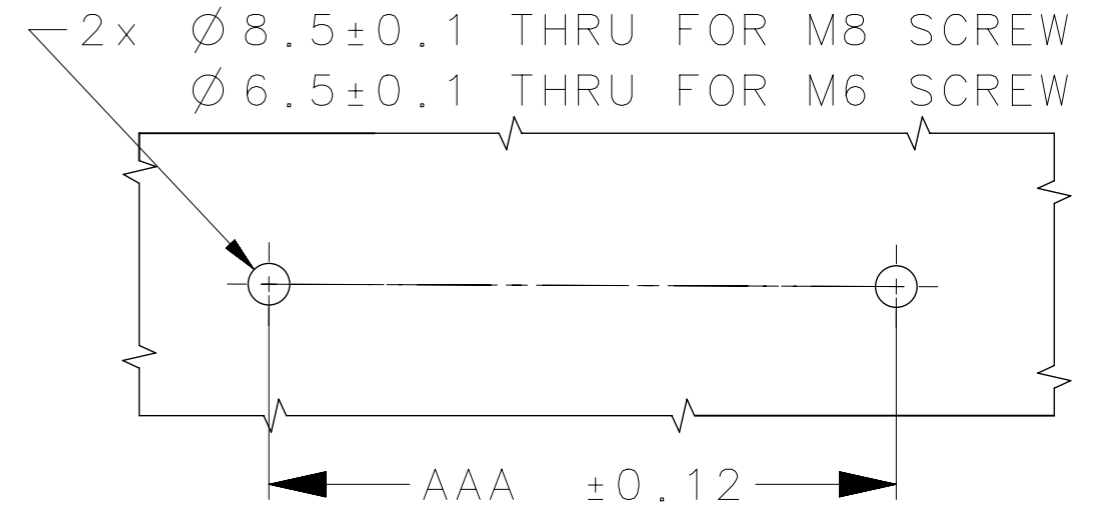


REVISION HISTORY			
REV	DATE	BY	DESCRIPTION
B	21DEC2023	SBK/VK	PRN: P2023-2365



SCALE 1:2

PANEL PREPARATION



P8-DMAH-32-500	P8 PIPE HANDLE	BUFFED AND BLACK POWDER COAT	500	M8X15Lg	40.5	32	55	18.4
P8-DMAH-32-400	P8 PIPE HANDLE	BUFFED AND BLACK POWDER COAT	400	M8X15Lg	40.5	32	55	18.4
P8-DMAH-32-300	P8 PIPE HANDLE	BUFFED AND BLACK POWDER COAT	300	M8X15Lg	40.5	32	55	18.4
P8-DMAH-19-350	P8 PIPE HANDLE	BUFFED AND BLACK POWDER COAT	350	M6X12Lg	30	19	39	13.3
P8-DMAH-19-250	P8 PIPE HANDLE	BUFFED AND BLACK POWDER COAT	250	M6X12Lg	30	19	39	13.3
P8-DMAH-19-150	P8 PIPE HANDLE	BUFFED AND BLACK POWDER COAT	150	M6X12Lg	30	19	39	13.3
SOUTHCO PART NUMBER	DESCRIPTION	FINISH	(AAA)	A	B	C	D	E

CPB NUMBER 2023-0391	THIRD ANGLE PROJECTION	 CONNECT • CREATE • INNOVATE			
SURFACE AREA mm ²	MILLIMETERS [IN]				
VOLUME mm ³	TOLERANCES UNLESS OTHERWISE NOTED	DESCRIPTION P8 - PIPE HANDLE			
PROPRIETARY ITEM <small>EXCEPT FOR USES EXPRESSLY GRANTED IN WRITING, INFORMATION DISCLOSED HEREON IS CONFIDENTIAL AND ALL RIGHTS, PATENT AND OTHERWISE, ARE RESERVED BY SOUTHCO, INC.</small>	ALL DIMENSIONS WITHOUT TOLERANCES ARE FOR REFERENCE ONLY.	SIZE A3	SYSTEM NX	DWG NO. J-P8-DMAH	
PER ASME Y14.5M-2009		DRAWN BY SBK	DATE 31JUL2023	SCALE 1:1	SHEET 1 OF 1

- NOTES:-
1. MOUNTING SCREWS NOT SUPPLIED.
 2. FOR e.g AAA=100 THE REAL LENGTH IS 100.
 3. MATERIAL : PIPE- ALUMINIUM, END MATERIAL-ZINC DIE CAST, CAP- POLYAMIDE.