

**southco**

PROPRIETARY ITEM - EXCEPT FOR USES EXPRESSLY  
 IDENTIFIED HEREON, ALL RIGHTS, PATENT  
 AND OTHERWISE ARE RESERVED BY SOUTHCO, INC.

LOCK PLUG  
 PLAIN HEAD, ZINC BODY

DRAWING NUMBER  
 J-PK-29

REV.	DATE	DRAWN	DESCRIPTION	PART NUMBER	MATERIAL	KEY CODE	KEYS
A	08NOV2005	AAB/MS	PRN: P2005-1592	PK-29-1X-YY-ZZZ	NOTE 2	SEE NOTE 5	SEE NOTE 1
B	19JAN2006	MJS/RLR	PRN: P2006-0099	PK-41-1X-YY-ZZZ	NOTE 2	SEE NOTE 5	SEE NOTE 7
C	25JAN2006	MJS/MDJ	PRN: P2006-0195				
D	26JAN2006	LCR/MS	PRN: P2006-0171				
E	25JUN2012	LCR/MS	PRN: P2012-0842				
F	18JAN2013	LCR/MS	PRN: P2013-0116				
G	09SEP2019	CMS/MSRI	PRN: P2019-2265				

MILLIMETER DIMENSIONS  
 DIMENSIONS WITHOUT  
 TOLERANCES ARE FOR  
 REFERENCE ONLY.



A3  
 PAPER  
 SIZE

FINISH TABLE	
'X' IN PART No.	EQUALS
5	BLACK POWDER COAT
6	BRIGHT CHROME PLATED
9	SATIN SILVER POLYESTER POWDER COAT
10	SILVER METALIC URETHANE POWDER COAT
11	CARDINAL WHITE POWDER COAT
13	LIGHT GREY POWDER COAT
14	FURNITURE WHITE POWDER COAT

NOTES:

- PART NUMBER COVERS LOCK PLUG COMPLETE WITH TWO KEYS LINKED TOGETHER. KEYS MAY BE INSTALLED IN LOCK PLUG OR PACKAGED BULK.
- PLUG BODY TO BE DIE CAST ZINC. TUMBLERS TO BE BRASS. KEYS TO BE BRASS, NICKEL PLATED.
- TRIVALENT CHROMATE FINISH ON PLUG BODY. HEAD IS POWDER COATED, COLOR IS PER THE FINISH TABLE.
- KEY CODES LS001 - LS125 USE MASTER KEY, SOUTHCO PART NUMBER PK-24-01.
- KEY CODE OPTIONS:

ZZZ - KEY CODE

001 - LS001  
 002 - LS002  
 003 - LS003

050 - LS050

RS001 - RS001

RS050 - RS050

KD1010 - KEYED DIFFERENTLY, 10 DIFFERENT KEY CODES, RS001 - RS010,  
 SOLD IN BAGS OF 10.

KD1050 - KEYED DIFFERENTLY, 50 DIFFERENT KEY CODES, RS001 - RS050,  
 SOLD IN BAGS OF 50.

KD1125 - KEYED DIFFERENTLY, 125 DIFFERENT KEY CODES, RS001 - RS125,  
 SOLD IN BAGS OF 125.

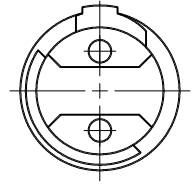
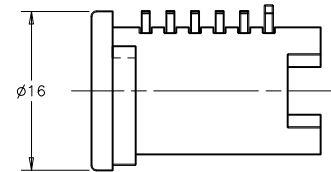
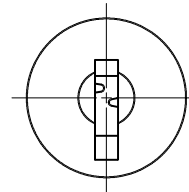
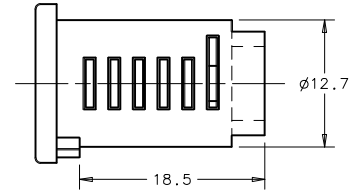
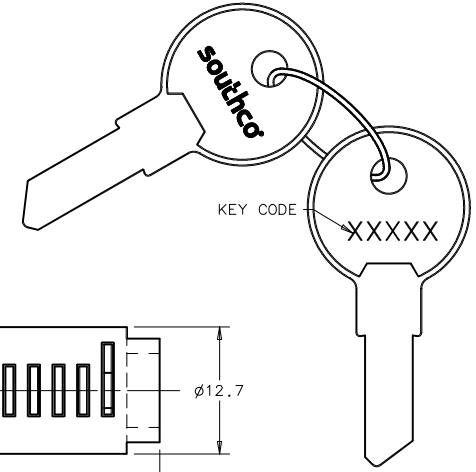
MK1010 - MASTER KEYED, KEYED DIFFERENTLY, 10 DIFFERENT KEY CODES, LS001 - LS010,  
 SOLD IN BAGS OF 10.

MK1050 - MASTER KEYED, KEYED DIFFERENTLY, 50 DIFFERENT KEY CODES, LS001 - LS050,  
 SOLD IN BAGS OF 50.

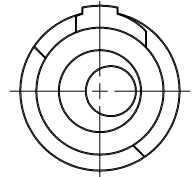
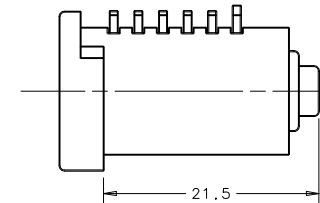
MK1125 - MASTER KEYED, KEYED DIFFERENTLY, 125 DIFFERENT KEY CODES, LS001 - LS125,  
 SOLD IN BAGS OF 125.

- YY IN PART NUMBER INDICATES END CONFIGURATION.

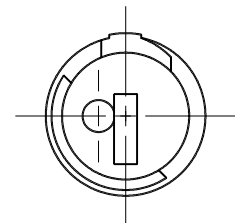
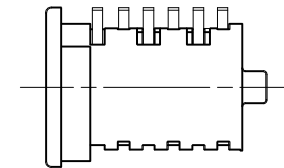
- TO ORDER A LOCK PLUG ASSEMBLY WITHOUT KEYS, CHANGE \*PK-29\* TO \*PK-41\*, FOR EXAMPLE: PART NUMBER PK-41-16-13-ZZZ IS A PK-29-16-13-ZZZ ASSEMBLY WITHOUT KEYS INCLUDED.



YY = 13



YY = 06



YY = 17