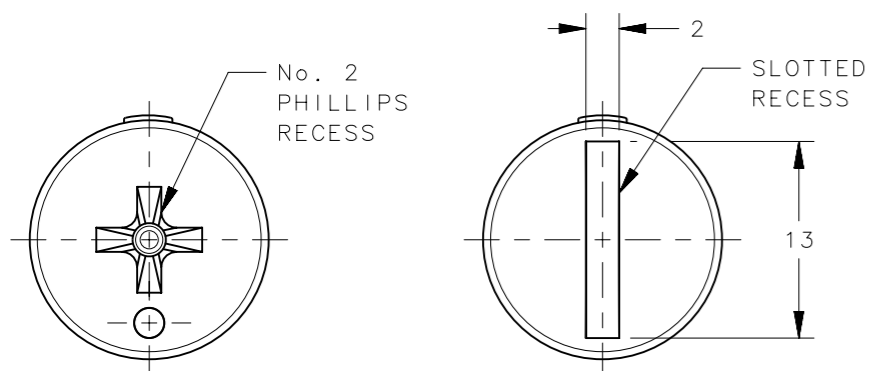
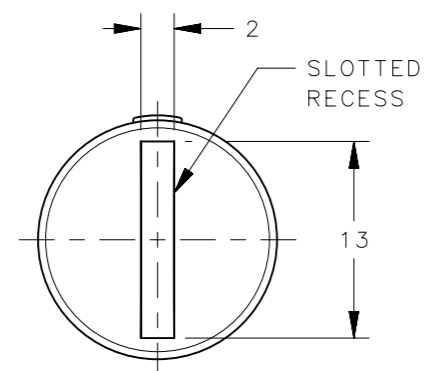


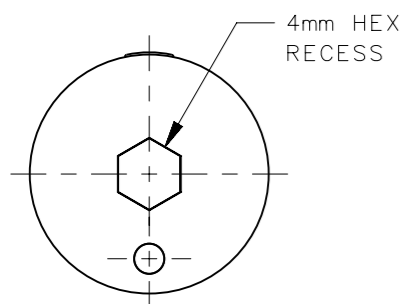
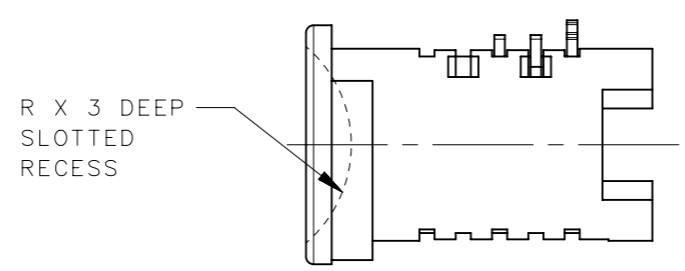
REVISION HISTORY			
REV	DATE	BY	DESCRIPTION
C	21NOV2023	PBJ/VK	PRN: P2023-2133



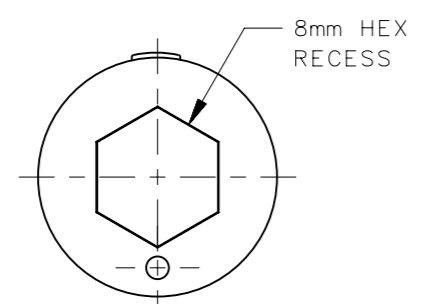
PK-0-34027-XX



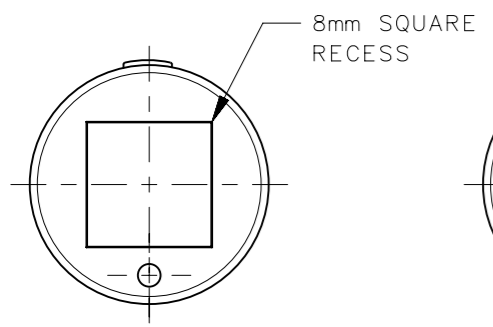
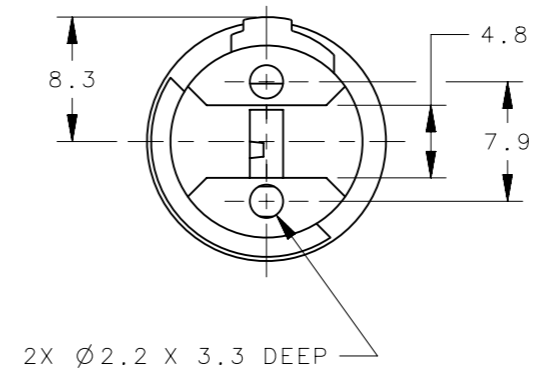
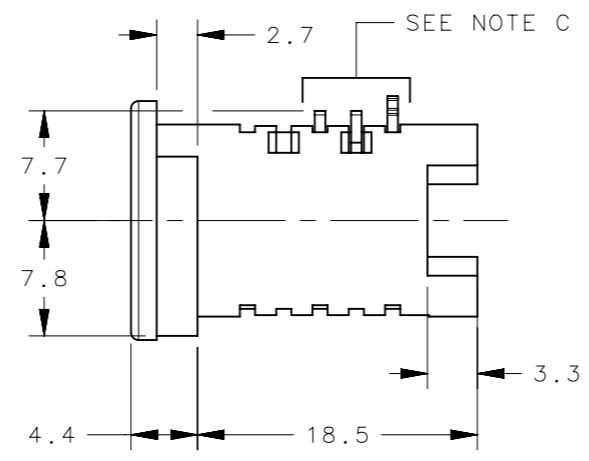
PK-0-43489-XX



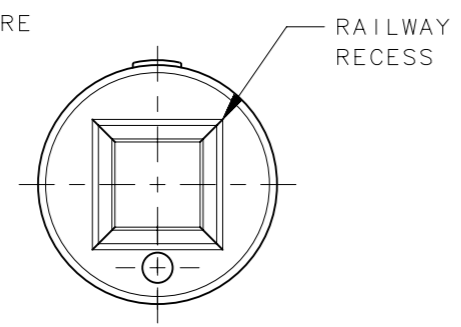
PK-0-34323-XX



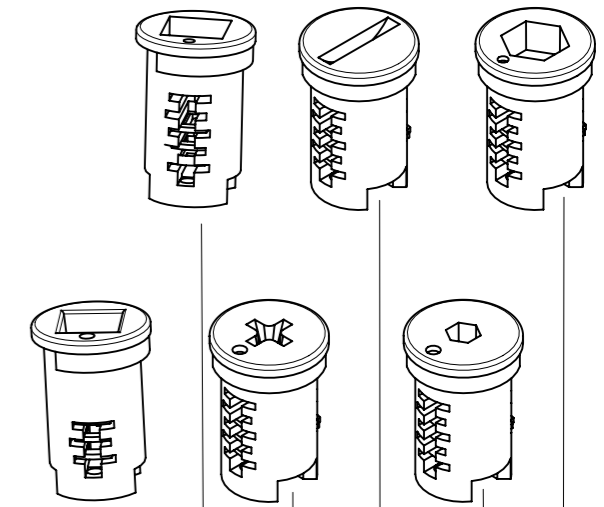
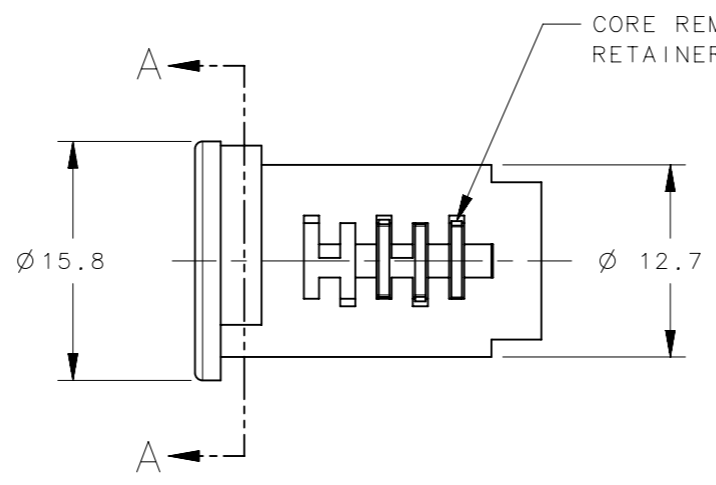
PK-0-40374-XX



PK-80-XX



PK-0-45800-XX



	RAILWAY RECESS	8MM SQUARE RECESS	PHILLIPS RECESS	SLOT RECESS	4mm HEX RECESS	8mm HEX RECESS
PK-0-45800-01	X	X	X	X	X	X
PK-0-45800-50	X	X	X	X	X	X
PK-80-01	X	X	X	X	X	X
PK-80-50	X	X	X	X	X	X
PK-0-34027-01	X	X	X	X	X	X
PK-0-34027-50	X	X	X	X	X	X
PK-0-43489-01	X	X	X	X	X	X
PK-0-43489-50	X	X	X	X	X	X
PK-0-34323-01	X	X	X	X	X	X
PK-0-34323-50	X	X	X	X	X	X
PK-0-40374-01	X	X	X	X	X	X
PK-0-40374-50	X	X	X	X	X	X

LOCKPLUG BODY	ZAMAK 3	CHROME PLATED	X	X	X	X	X	X	X	X	X
		BLACK POWDER COATED		X	X	X	X	X	X	X	X
WAFERS	BRASS	NATURAL	X	X	X	X	X	X	X	X	X
SPRING	STAINLESS STEEL	PASSIVATE	X	X	X	X	X	X	X	X	X
TYPE OF COMPONENT	MATERIAL	FINISH	LOCK PLUG ASSEMBLY PART NUMBERS								
	THIRD ANGLE PROJECTION										
	MILLIMETERS [IN]										
SURFACE AREA	TOLERANCES UNLESS OTHERWISE NOTED		DESCRIPTION								
VOLUME	ALL DIMENSIONS WITHOUT TOLERANCES ARE FOR REFERENCE ONLY.		LOCK PLUG TOOL OPERABLE								
PROPRIETARY ITEM	PER ASME Y14.5M-2009	SIZE A3	SYSTEM NX	DWG NO. J-PK-9-TOOL-OP							
EXCEPT FOR USES EXPRESSLY GRANTED IN WRITING, INFORMATION DISCLOSED HEREON IS CONFIDENTIAL AND ALL RIGHTS, PATENT AND OTHERWISE, ARE RESERVED BY SOUTHCO, INC.	PER ASME Y14.5M-2009	DRAWN BY MJS/LCR	DATE 21MAY2013	SCALE 2:1	SHEET 1 OF 1						

NOTES:

A. POWDER COAT IS ONLY ON HEAD OF PLUG ABOVE SECTION A-A.

B. RoHS COMPLIANT.

C. BEFORE INSTALLATION, ADD GREASE TO WAFERS FOR PROPER OPERATION. GREASE SHOULD BE COMPATIBLE WITH LOCK COMPONENT MATERIAL AND LATCH MATERIAL. GREASE VISCOSITY SHOULD BE LIGHT ENOUGH TO ALLOW WAFERS TO RETURN TO EXTENDED POSITION AFTER BEING DEPRESSED INTO LOCK BODY.