

6

5

4

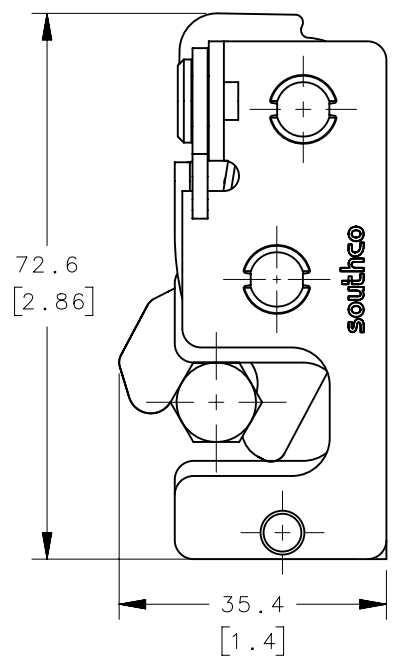
3

2

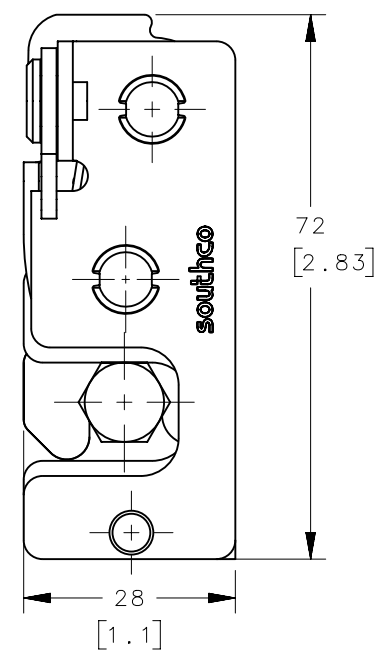
1

REVISION HISTORY			
REV	DATE	BY	DESCRIPTION
A	20MAR2024	CMS/CLB	PRN: P2024-0290

R4-10-S I-10 B-M



SECONDARY STAGE FOR TWO STAGE LATCHES ONLY



PRIMARY STAGE FOR SINGLE AND TWO STAGE LATCHES

S STAGE & ACTUATION

- 1 SINGLE STAGE, RIGHT HAND
- 2 SINGLE STAGE, LEFT HAND
- 3 TWO STAGE, RIGHT HAND
- 4 TWO STAGE, LEFT HAND

I MOUNTING STYLE

- 0 Ø7.2 [.283] THRU
- 1 1/4-20 THREAD
- 2 M6 X 1 THREAD

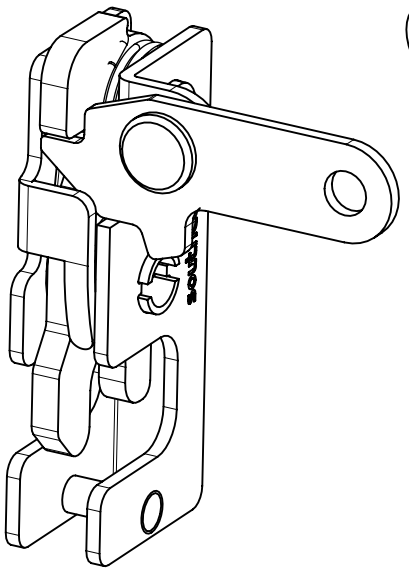
M MATERIAL

- 10 STEEL, ZINC PLATED
- 15 STEEL, BLACK ZINC NICKEL PLATED
- 20 STAINLESS STEEL, PASSIVATED
- 77 STEEL, ZINC NICKEL PLATED

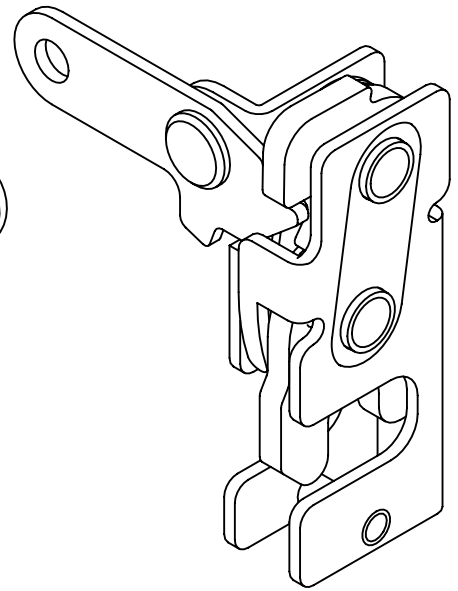
B BASE STYLE

- 1 STANDARD
- 5 INTEGRATED BUMPER

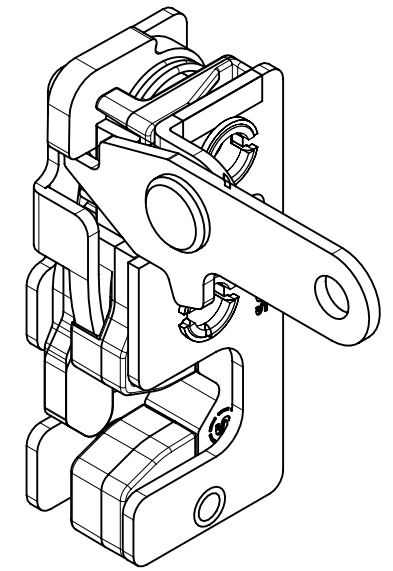
RIGHT HAND, STANDARD



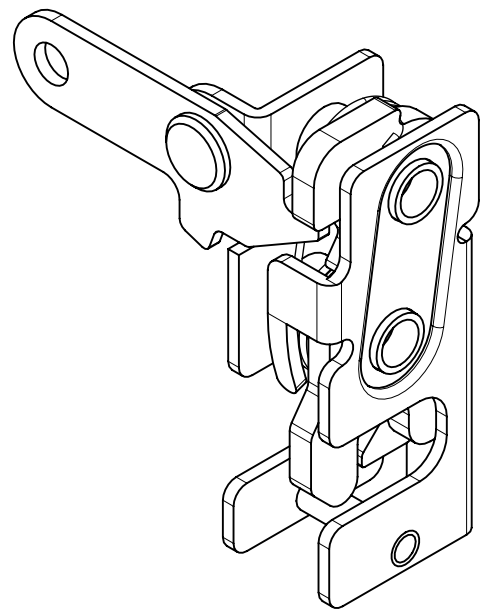
LEFT HAND, STANDARD



RIGHT HAND, INTEGRATED BUMPER



LEFT HAND, INTEGRATED BUMPER



NOTES:

- A. MATERIAL AND FINISH:
- HOUSING, LEVER, PAWL, TRIGGER AND PINS: MATERIAL - STEEL
 - 10 ZINC PLATED, BRIGHT CHROMATE
 - 77 ZINC NICKEL, BRIGHT CHROMATE
 - 15 ZINC NICKEL, BLACK
 - MATERIAL - STAINLESS STEEL
 - 20 PASSIVATED
 - SPRING: STAINLESS STEEL, PASSIVATED

- B. INTEGRATED BUMPER MATERIAL:
- GUIDE - DELRIN, BLACK
 - STOP BLOCK - EPDM, DURO 60, SHORE A

THIRD ANGLE PROJECTION					
MILLIMETERS [IN]					
TOLERANCES UNLESS OTHERWISE NOTED		DESCRIPTION			
ALL DIMENSIONS WITHOUT TOLERANCES ARE FOR REFERENCE ONLY.		R4 ROTARY LATCH PERPENDICULAR TRIGGER			
PROPRIETARY ITEM		SIZE	SYSTEM	DWG NO.	
EXCEPT FOR USES EXPRESSLY GRANTED IN WRITING, INFORMATION DISCLOSED HEREON IS CONFIDENTIAL AND ALL RIGHTS, PATENT AND OTHERWISE, ARE RESERVED BY SOUTHCO, INC.		B	NX	J-R4-10-101	
PER ASME Y14.5M-2009		DRAWN BY	DATE	SCALE	SHEET
		CMS/CLB	20MAR2024	1:1	1 OF 4

6

5

4

3

2

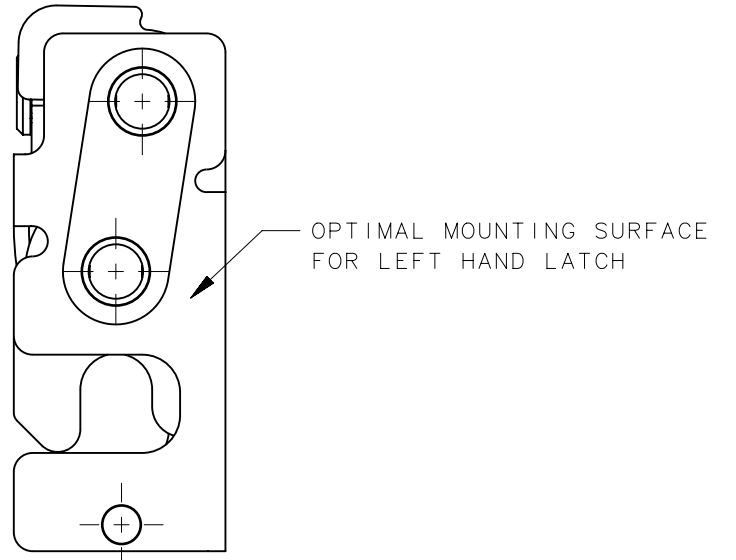
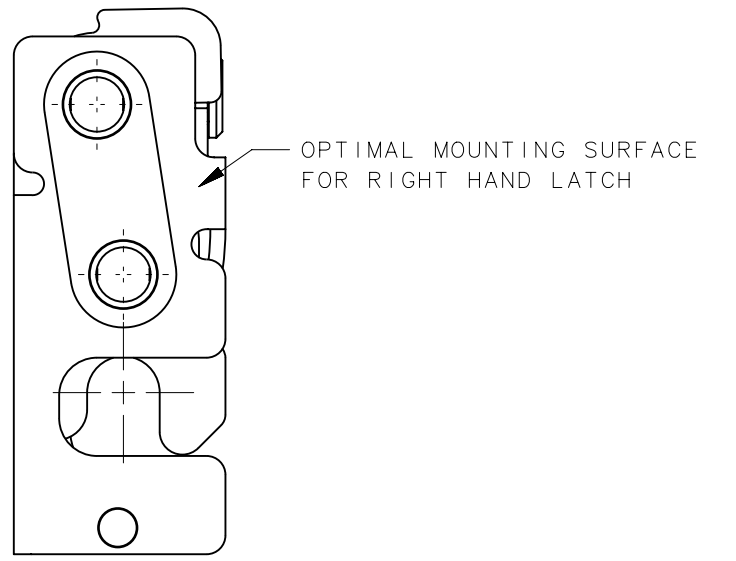
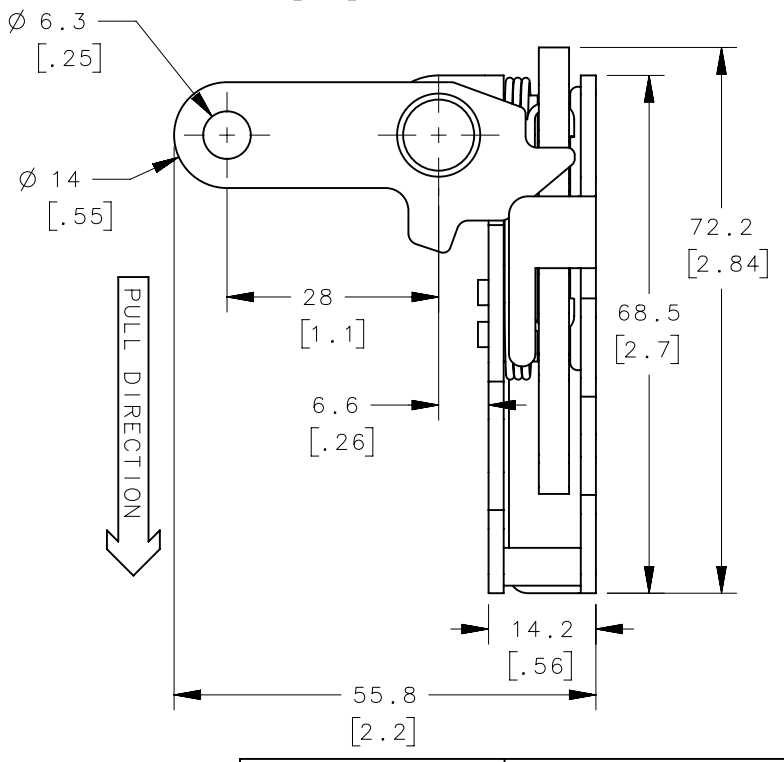
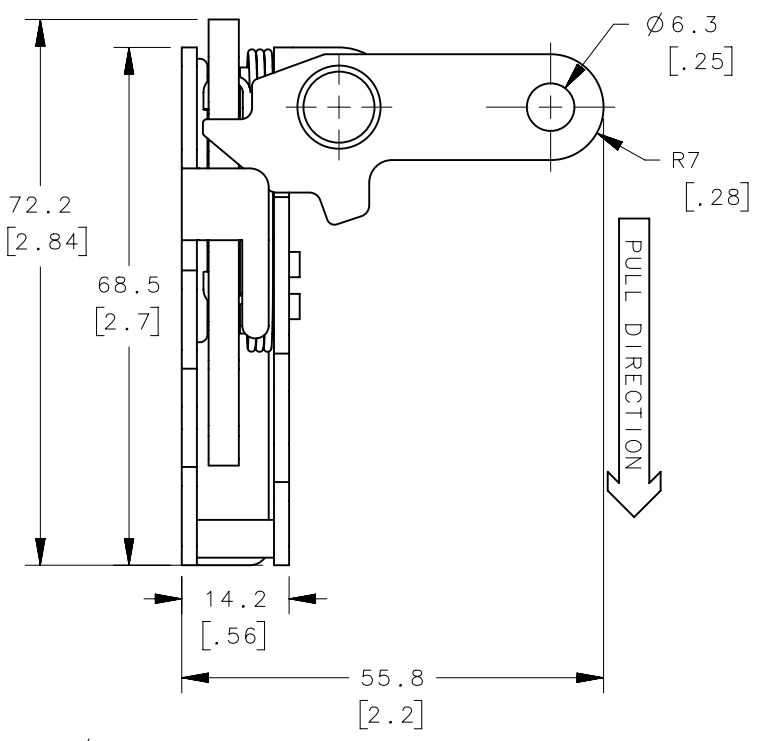
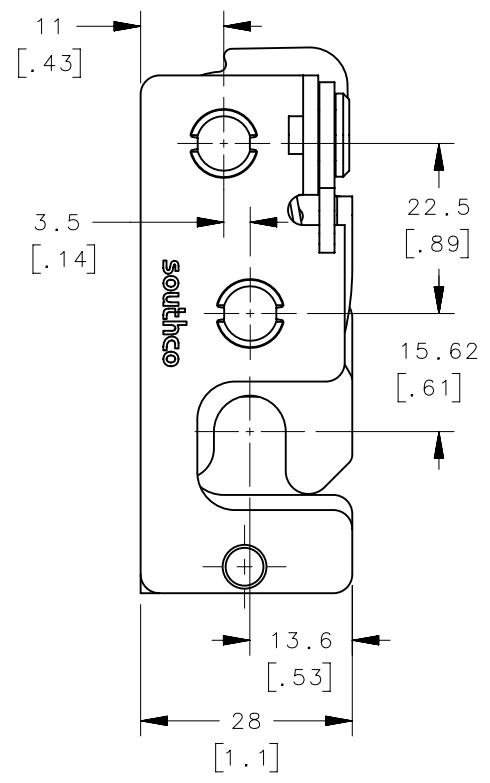
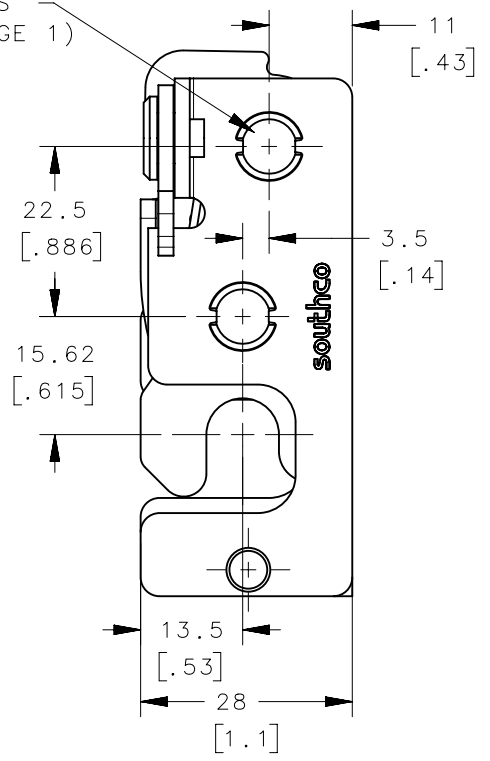
1

REVISION HISTORY			
REV	DATE	BY	DESCRIPTION
A	20MAR2024	CMS/CLB	PRN: P2024-0290

2X LATCH MOUNTING HOLES
(SEE DESCRIPTION ON PAGE 1)

RIGHT HAND LATCH, STANDARD
(R4-10-1X-101-XX OR R4-10-3X-101-XX)

LEFT HAND LATCH, STANDARD
(R4-10-2X-101-XX OR R4-10-4X-101-XX)



THIRD ANGLE PROJECTION	
MILLIMETERS [IN]	
TOLERANCES UNLESS OTHERWISE NOTED	
ALL DIMENSIONS WITHOUT TOLERANCES ARE FOR REFERENCE ONLY.	
PER ASME Y14.5M-2009	

southco [®]			
CONNECT • CREATE • INNOVATE			
DESCRIPTION R4 ROTARY LATCH PERPENDICULAR TRIGGER			
SIZE B	SYSTEM NX	DWG NO. J-R4-10-101	
DRAWN BY CMS/CLB	DATE 20MAR2024	SCALE 1:1	SHEET 2 OF 4

±

6

5

4

3

2

1

6

5

4

3

2

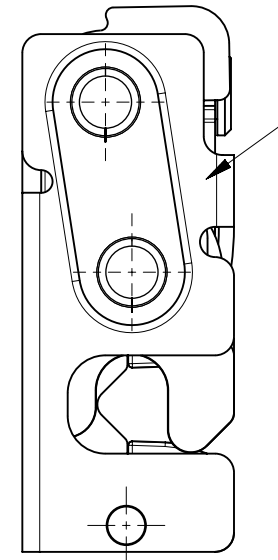
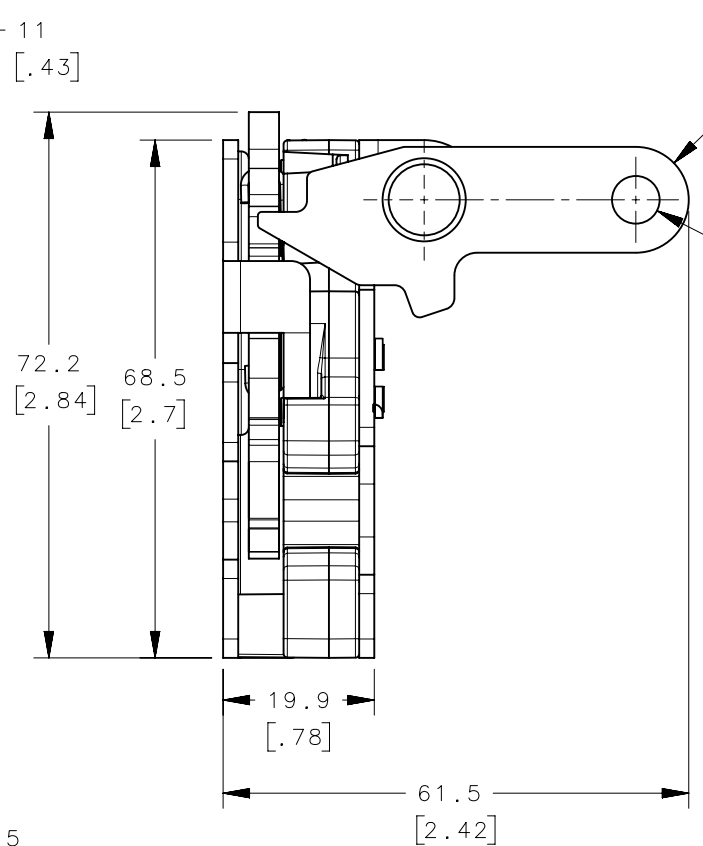
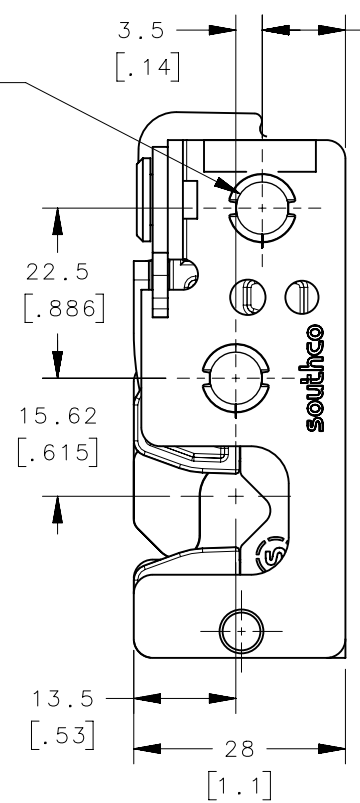
1

REVISION HISTORY			
REV	DATE	BY	DESCRIPTION
A	20MAR2024	CMS/CLB	PRN: P2024-0290

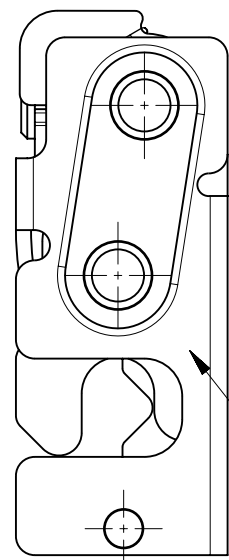
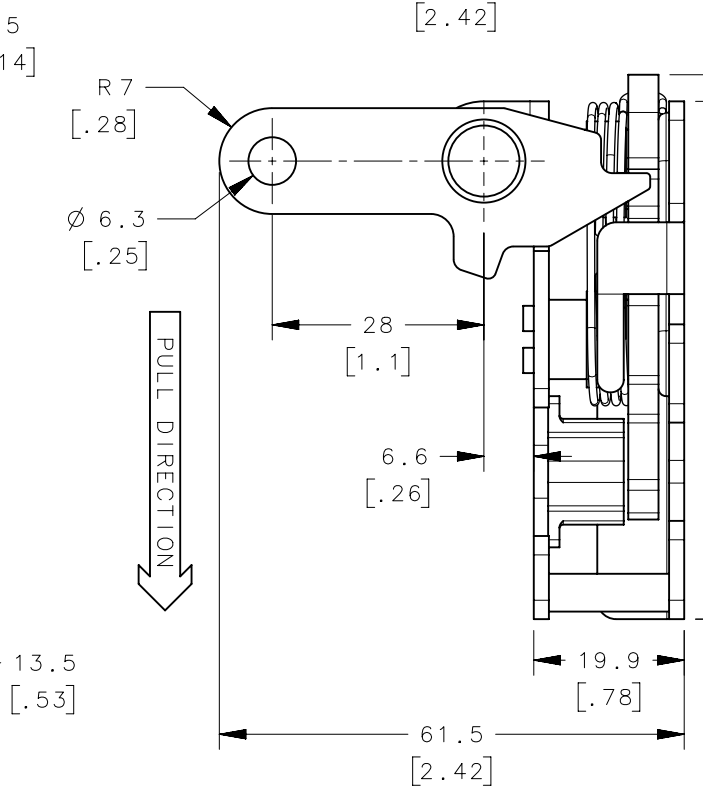
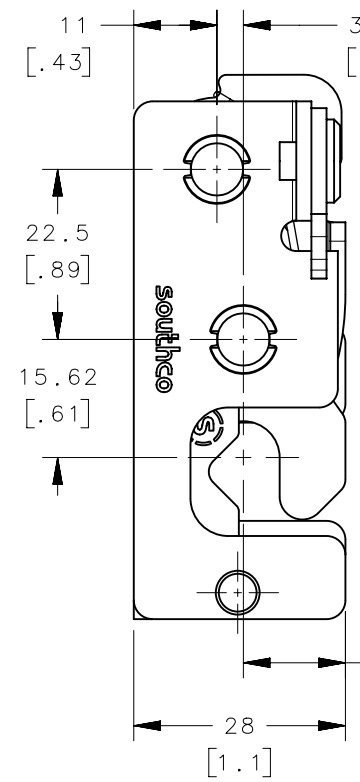
2X LATCH MOUNTING HOLES
(SEE DESCRIPTION ON PAGE 1)

RIGHT HAND LATCH, INTEGRATED BUMPER
(R4-10-1X-105-XX OR R4-10-3X-105-XX)

LEFT HAND LATCH, INTEGRATED BUMPER
(R4-10-2X-105-XX OR R4-10-4X-105-XX)



OPTIMAL MOUNTING SURFACE FOR RIGHT HANDED LATCH



OPTIMAL MOUNTING SURFACE FOR LEFT HANDED LATCH

THIRD ANGLE PROJECTION	
MILLIMETERS [IN]	
TOLERANCES UNLESS OTHERWISE NOTED	
ALL DIMENSIONS WITHOUT TOLERANCES ARE FOR REFERENCE ONLY.	
PER ASME Y14.5M-2009	

southco [®]			
CONNECT • CREATE • INNOVATE			
DESCRIPTION R4 ROTARY LATCH PERPENDICULAR TRIGGER			
SIZE B	SYSTEM NX	DWG NO. J-R4-10-101	
DRAWN BY CMS/CLB	DATE 20MAR2024	SCALE 1:1	SHEET 3 OF 4

6

5

4

3

2

1

6

5

4

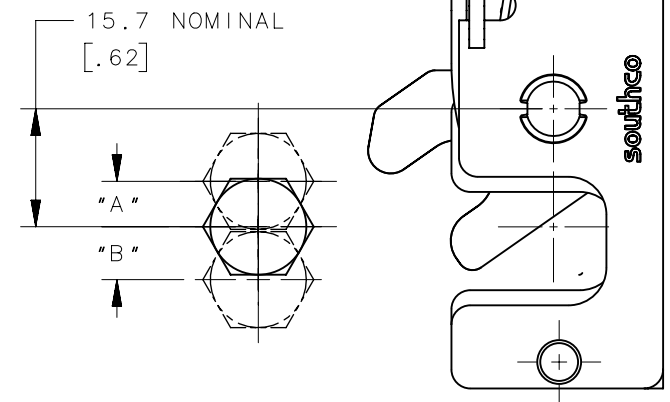
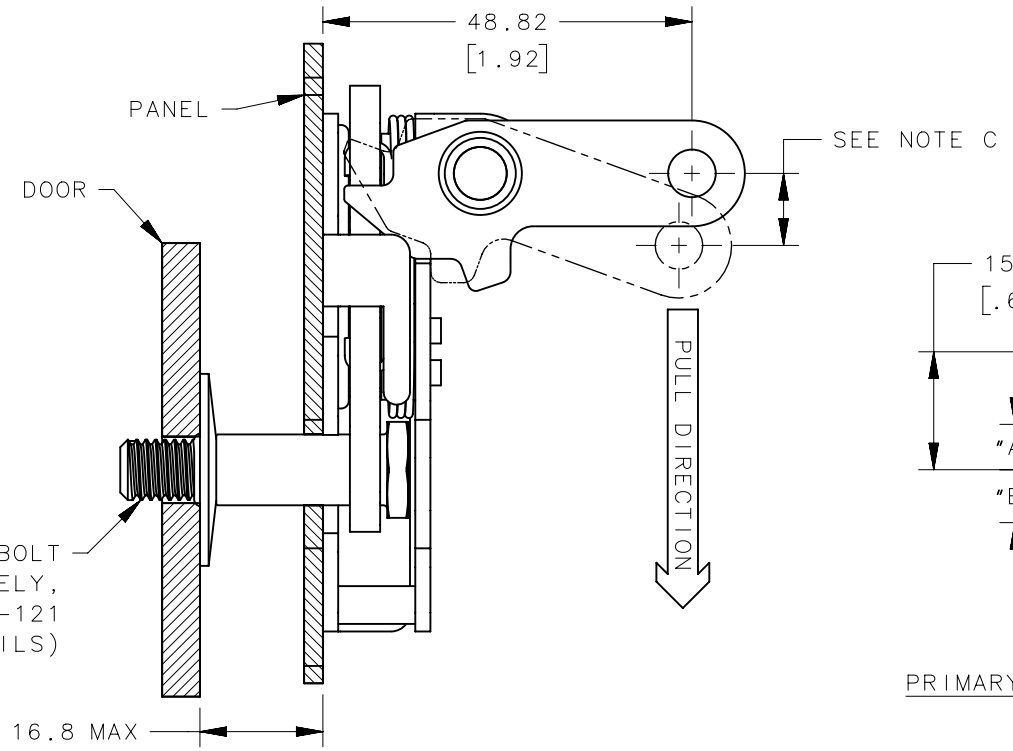
3

2

1

REVISION HISTORY			
REV	DATE	BY	DESCRIPTION
A	20MAR2024	CMS/CLB	PRN: P2024-0290

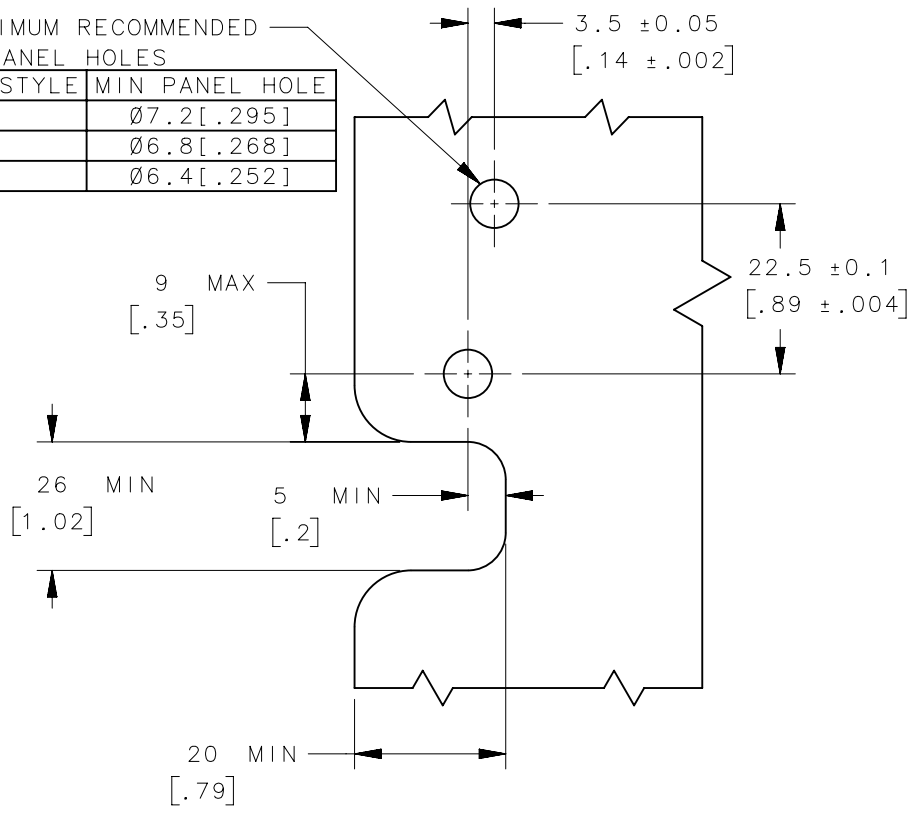
SHOWING STANDARD
RIGHT HAND LATCH



PRIMARY STAGE STRIKER ALIGNMENT, STANDARD
(SEE NOTE D)

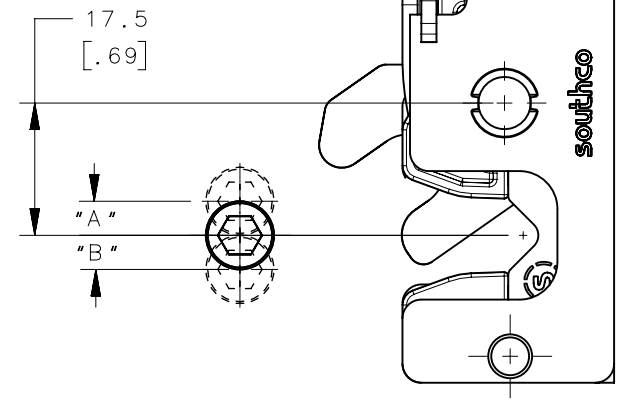
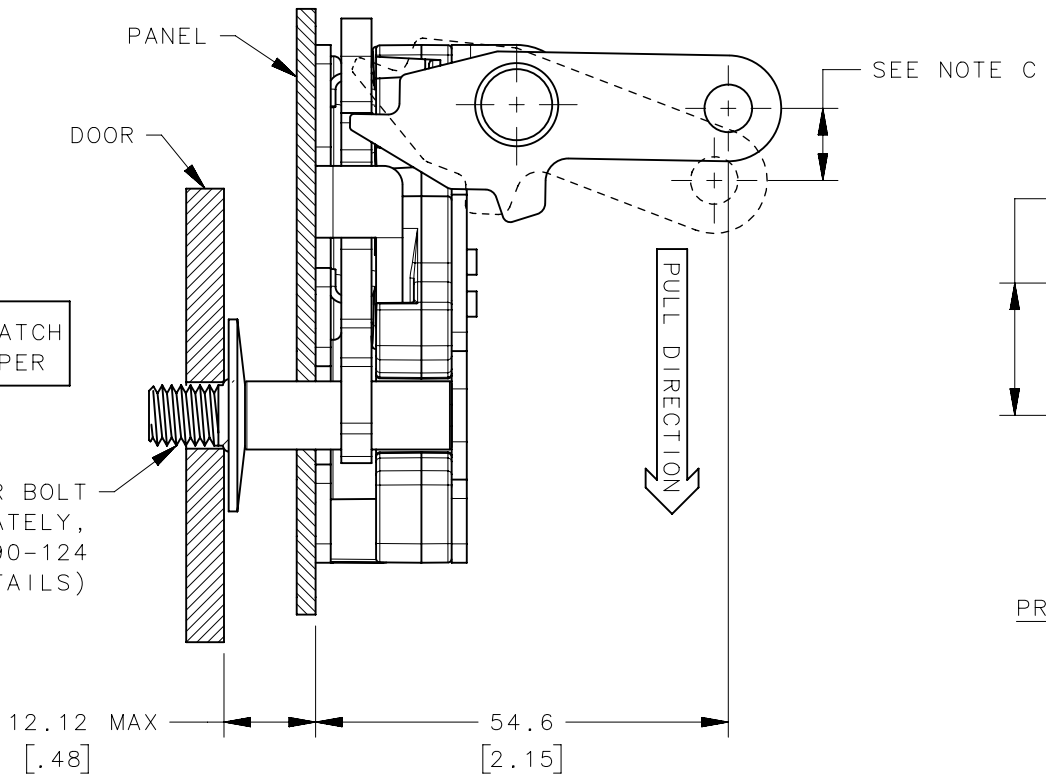
2X MINIMUM RECOMMENDED
PANEL HOLES

MOUNTING STYLE	MIN PANEL HOLE
0	Ø7.2 [.295]
1	Ø6.8 [.268]
2	Ø6.4 [.252]



PANEL PREP FOR STANDARD LATCH
AND LATCH WITH INTEGRATED BUMPER

SHOWING RIGHT HAND LATCH
WITH INTEGRATED BUMPER



PRIMARY STAGE STRIKER ALIGNMENT WITH INTEGRATED BUMPER
(SEE NOTE D)

NOTES:

- C: MINIMUM TRIGGER TRAVEL TO RELEASE THE LATCH OF 3.9mm [0.15]
TRIGGER TRAVEL MINIMUM TO HARD STOP OF 6.7mm [0.24]
- D. THESE VIEWS SHOW THE MAXIMUM STRIKER MISALIGNMENT ACCEPTED BY THE LATCH FROM NOMINAL STRIKER POSITION. THEY ASSUME THE STRIKER CENTERLINE IS PERFECTLY PERPENDICULAR TO THE LATCH MOUNTING SURFACE. STRIKER MISALIGNMENT COULD BE FROM MANUFACTURING TOLERANCES OR FROM NON RIGID DOOR SYSTEMS AND THIS REPRESENTS THE MAXIMUM OF BOTH COMBINED.
- E. INTEGRATED BUMPER LATCH MUST USE R4-90-124-XX.

NON-RIGID DOOR	3.7	8.1	5.7	6.3
RIGID DOOR	0	3.6	0.3	0.3
	"A"	"B"	"A"	"B"
	STANDARD		INTEGRATED BUMPER	
CPB NUMBER	-			
	MILLIMETERS [IN]			
	TOLERANCES UNLESS OTHERWISE NOTED			
	ALL DIMENSIONS WITHOUT TOLERANCES ARE FOR REFERENCE ONLY.		DESCRIPTION	
	PER ASME Y14.5M-2009		R4 ROTARY LATCH PERPENDICULAR TRIGGER	
PROPRIETARY ITEM EXCEPT FOR USES EXPRESSLY GRANTED IN WRITING, INFORMATION DISCLOSED HEREON IS CONFIDENTIAL AND ALL RIGHTS, PATENT AND OTHERWISE, ARE RESERVED BY SOUTHCO, INC.	SIZE	SYSTEM	DWG NO.	
	B	NX	J-R4-10-101	
	DRAWN BY	DATE	SCALE	SHEET
	CMS/CLB	20MAR2024	1:1	4 OF 4

6

5

4

3

2

1