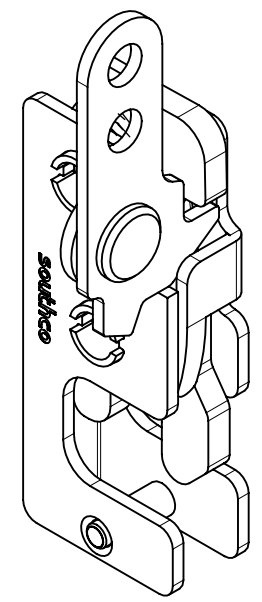
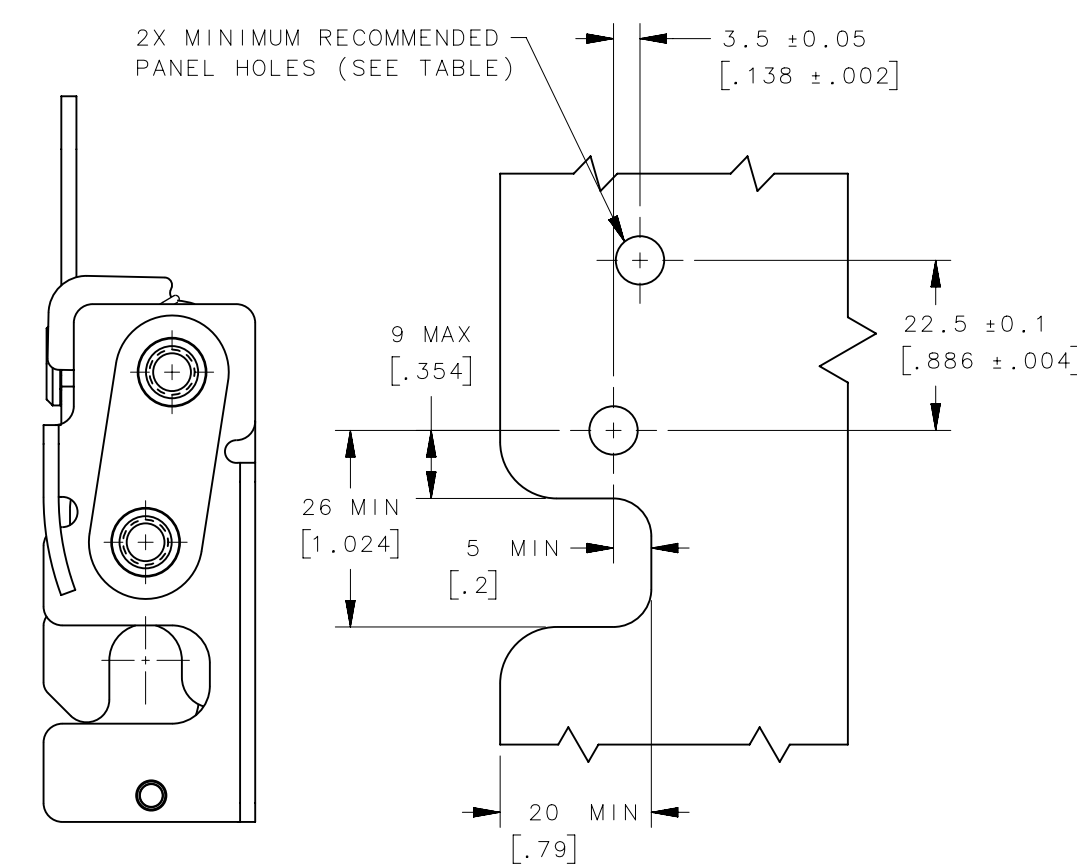
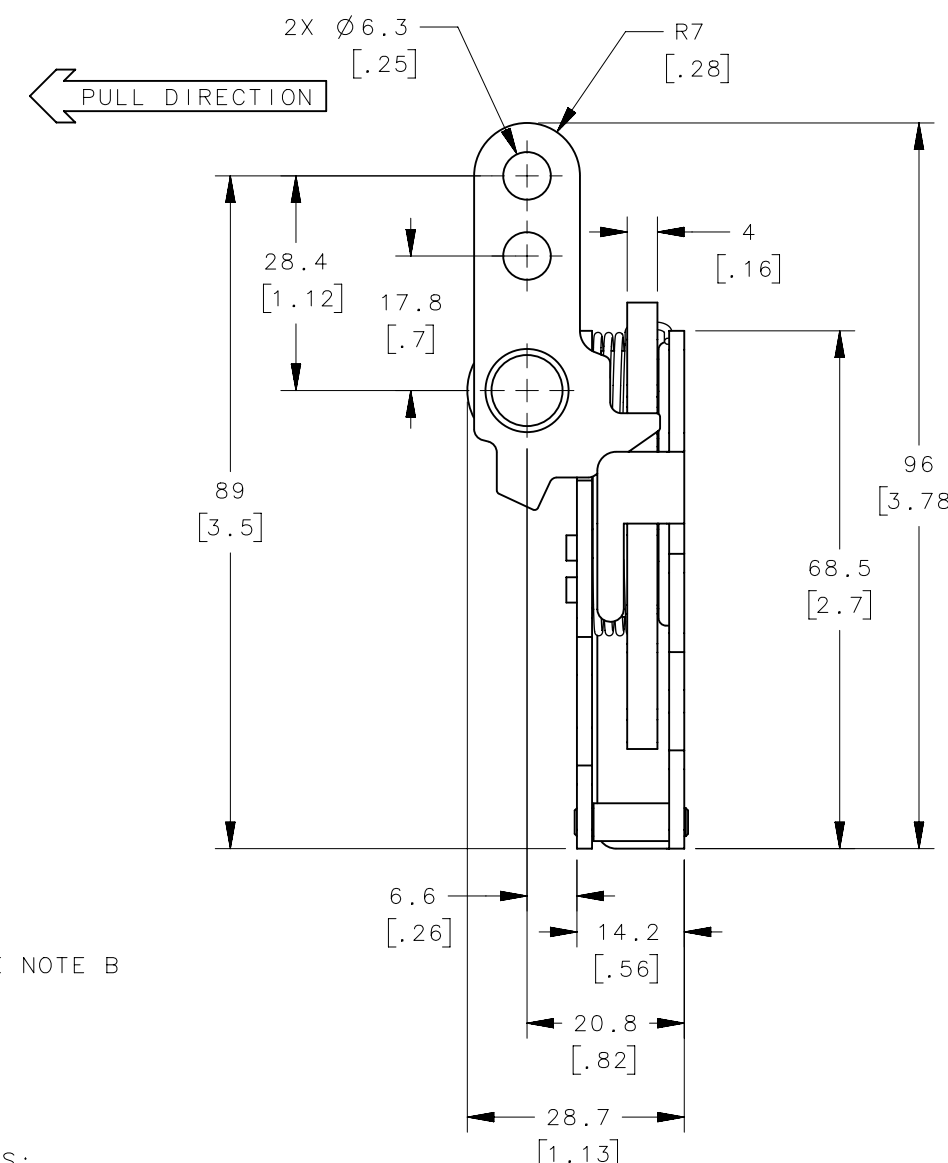
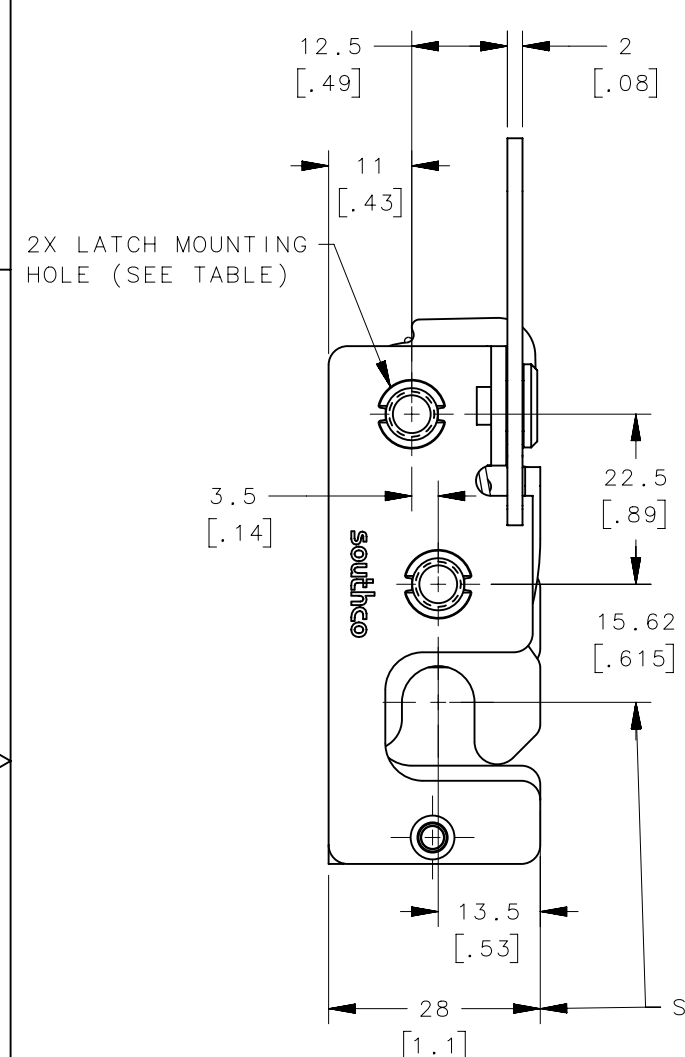


REVISION HISTORY			
REV	DATE	BY	DESCRIPTION
1	28DEC2023	PSP/SAK	PRN: P2023-2380



SCALE 1:1

PANEL PREPARATION

- NOTES:
- A. MATERIAL AND FINISH:
 - HOUSING, LEVER AND INTERNAL COMPONENTS: MATERIAL - STEEL
 - 10 ZINC PLATED, BRIGHT CHROMATE
 - 77 ZINC NICKEL, BRIGHT CHROMATE
 - PAWL AND TRIGGER: MATERIAL - HARDENED STEEL
 - 10 ZINC PLATED, BRIGHT CHROMATE
 - 77 ZINC NICKEL, BRIGHT CHROMATE
 - ZINC PLATE CHROMATE.
 - SPRING: STEEL, PTFE COATING, BLACK
 - B. THESE DIMENSIONS REQUIRED FOR ± MOUNTING STRIKER BOLT.
 - C. Ø6.3 (.25) LEVER HOLES USE OPTIONAL CABLE RETAINER R4-0-43922 SOLD SEPARATELY.

R4-10-20-201-77	Ø 7.2 THRU	Ø 7.6 [.299]	SEE NOTE A	SEE NOTE A
R4-10-21-201-77	1/4-20 THREAD	Ø 6.8 [.268]		
R4-10-22-201-77	M6 THREAD	Ø 6.4 [.252]		
R4-10-20-201-10	Ø 7.2 THRU	Ø 7.6 [.299]		
R4-10-21-201-10	1/4-20 THREAD	Ø 6.8 [.268]		
R4-10-22-201-10	M6 THREAD	Ø 6.4 [.252]		
ASSEMBLY PART NUMBER	LATCH MOUNTING HOLE	MINIMUM PANEL HOLE	MATERIAL	FINISH

THIRD ANGLE PROJECTION				
MILLIMETERS [IN]				
SURFACE AREA	TOLERANCES UNLESS OTHERWISE NOTED		DESCRIPTION	
VOLUME	ALL DIMENSIONS WITHOUT TOLERANCES ARE FOR REFERENCE ONLY.		R4 MINI ROTARY LATCH INLINE - LEFT HAND	
PROPRIETARY ITEM	SIZE	SYSTEM	DWG NO.	
EXCEPT FOR USES EXPRESSLY GRANTED IN WRITING, INFORMATION DISCLOSED HEREON IS CONFIDENTIAL AND ALL RIGHTS, PATENT AND OTHERWISE, ARE RESERVED BY SOUTHCO, INC.	B	NX	J-R4-10-20-201	
PER ASME Y14.5M-2009	DRAWN BY	DATE	SCALE	SHEET
	ACH/JCK	09DEC2010	1:1	1 OF 2

6

5

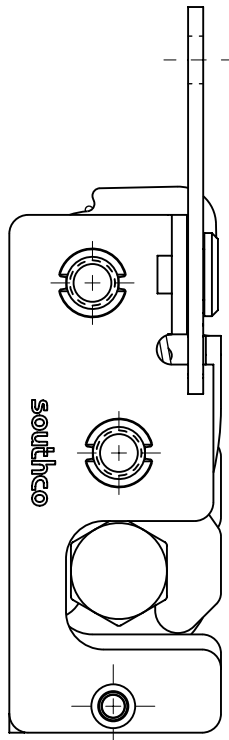
4

3

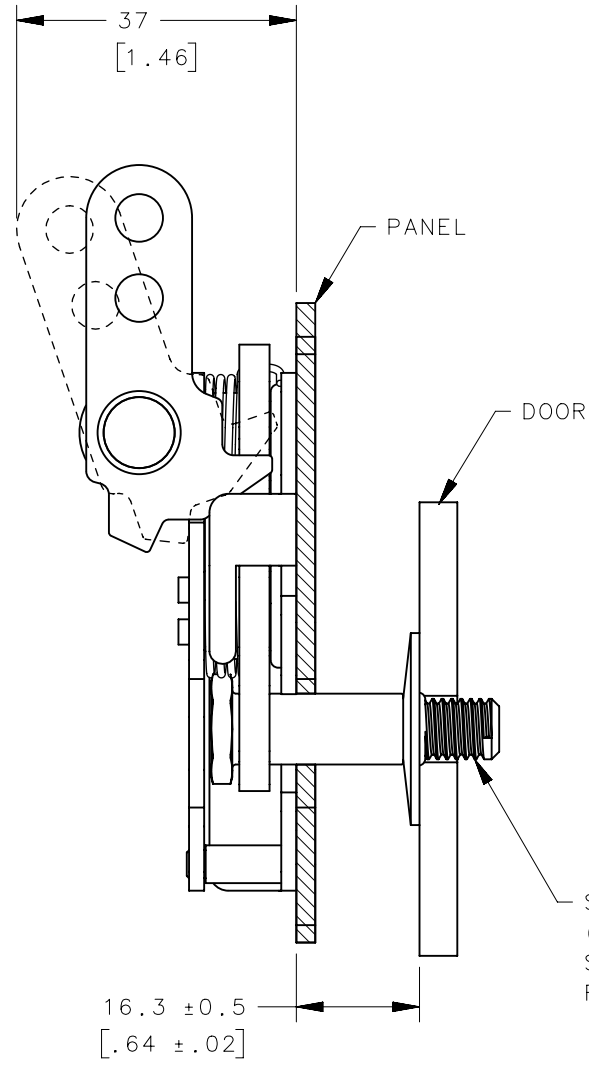
2

1

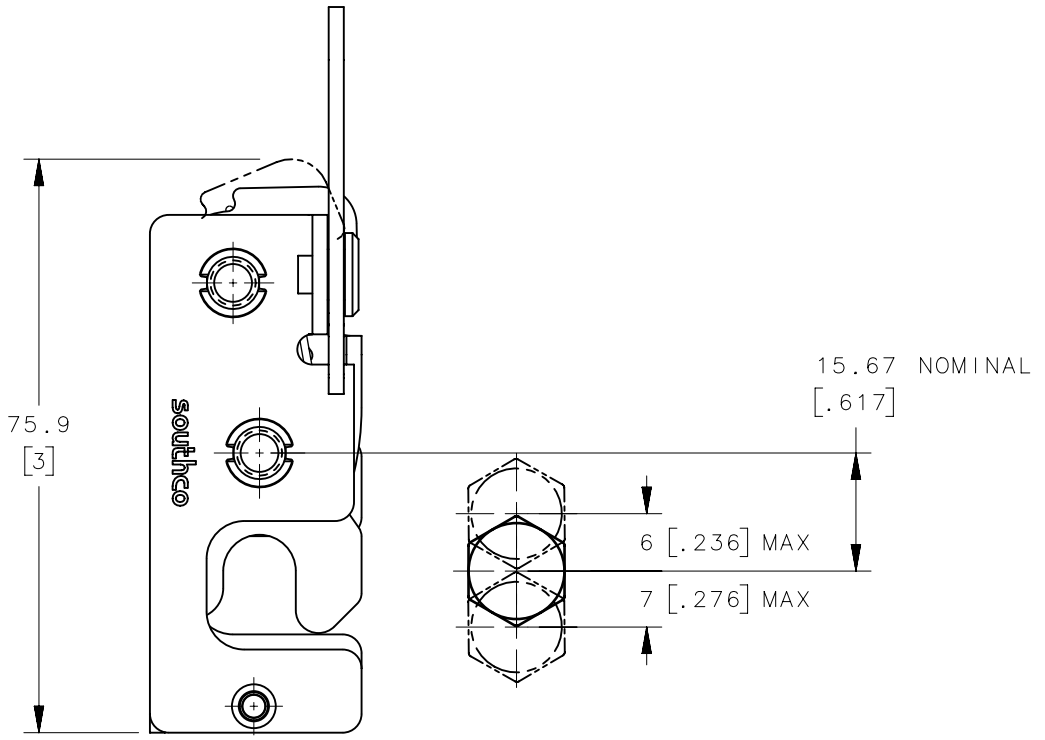
REVISION HISTORY			
REV	DATE	BY	DESCRIPTION
1	28DEC2023	PSP/SAK	PRN: P2023-2380



← PULL DIRECTION



STRIKER BOLT
(SOLD SEPARATELY,
SEE R4-90-121-10
FOR DETAILS)



MISALIGNMENT VIEW
(SEE NOTE B)

NOTES:

- A. THE TOLERANCE BETWEEN THE LATCH AND STRIKER BOLT ASSUMES A NON-RIGID DOOR INSTALLATION THAT WILL ALLOW THE DOOR TO MOVE INTO THE NOMINAL POSITION DURING LATCHING. RIGID DOORS MUST HAVE THE STRIKER INSTALLED PER THE PANEL PREPARATION RECOMMENDATION.
- B. THE MISALIGNMENT VIEW ASSUMES THE LATCH IS CONNECTED TO A PERFECTLY RIGID DOOR AND HINGE; THEREFORE, THERE IS NO DOOR AND/OR HINGE SLACK ASSOCIATED WITH THESE DIMENSIONS. THE MISALIGNMENT VIEW DOES NOT TAKE FLEXING OF THE STRIKER BOLT INTO ACCOUNT.

R4-10-20-201-77	Ø 7.2 THRU	Ø 7.6 [.299]	SEE NOTE A	SEE NOTE A
R4-10-21-201-77	1/4-20 THREAD	Ø 6.8 [.268]		
R4-10-22-201-77	M6 THREAD	Ø 6.4 [.252]		
R4-10-20-201-10	Ø 7.2 THRU	Ø 7.6 [.299]		
R4-10-21-201-10	1/4-20 THREAD	Ø 6.8 [.268]		
R4-10-22-201-10	M6 THREAD	Ø 6.4 [.252]		
ASSEMBLY PART NUMBER	LATCH MOUNTING HOLE	MINIMUM PANEL HOLE	MATERIAL	FINISH

THIRD ANGLE PROJECTION				
MILLIMETERS [IN]				
TOLERANCES UNLESS OTHERWISE NOTED		DESCRIPTION		
ALL DIMENSIONS WITHOUT TOLERANCES ARE FOR REFERENCE ONLY.		R4 MINI ROTARY LATCH INLINE - LEFT HAND		
SIZE	SYSTEM	DWG NO.		
B	NX	J-R4-10-20-201		
PER ASME Y14.5M-2009		DRAWN BY	DATE	SCALE
		ACH/JCK	09DEC2010	1:1
				SHEET 2 OF 2

6

5

4

3

2

1