

6

5

4

3

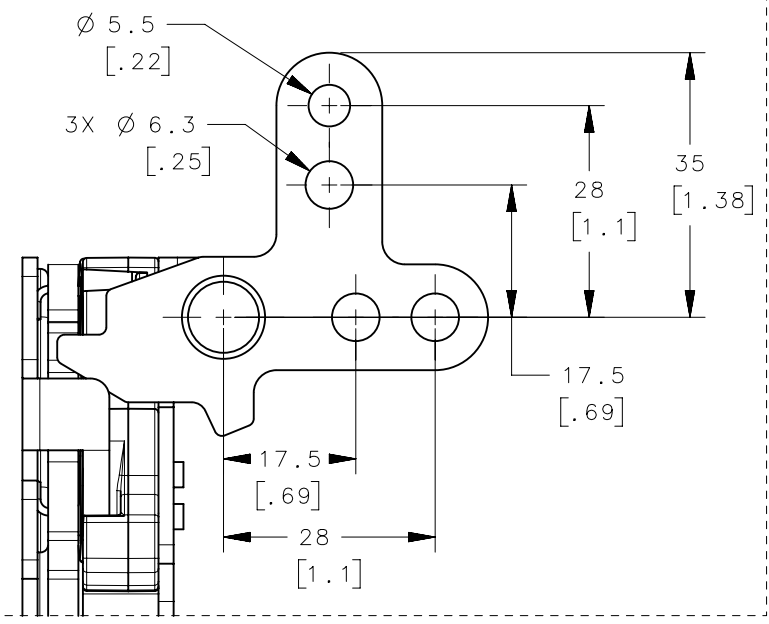
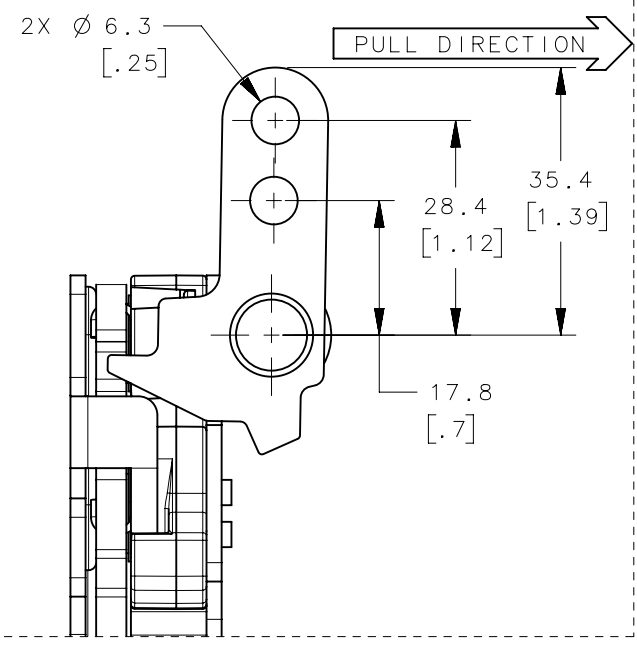
2

1

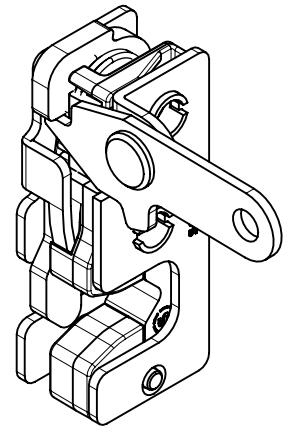
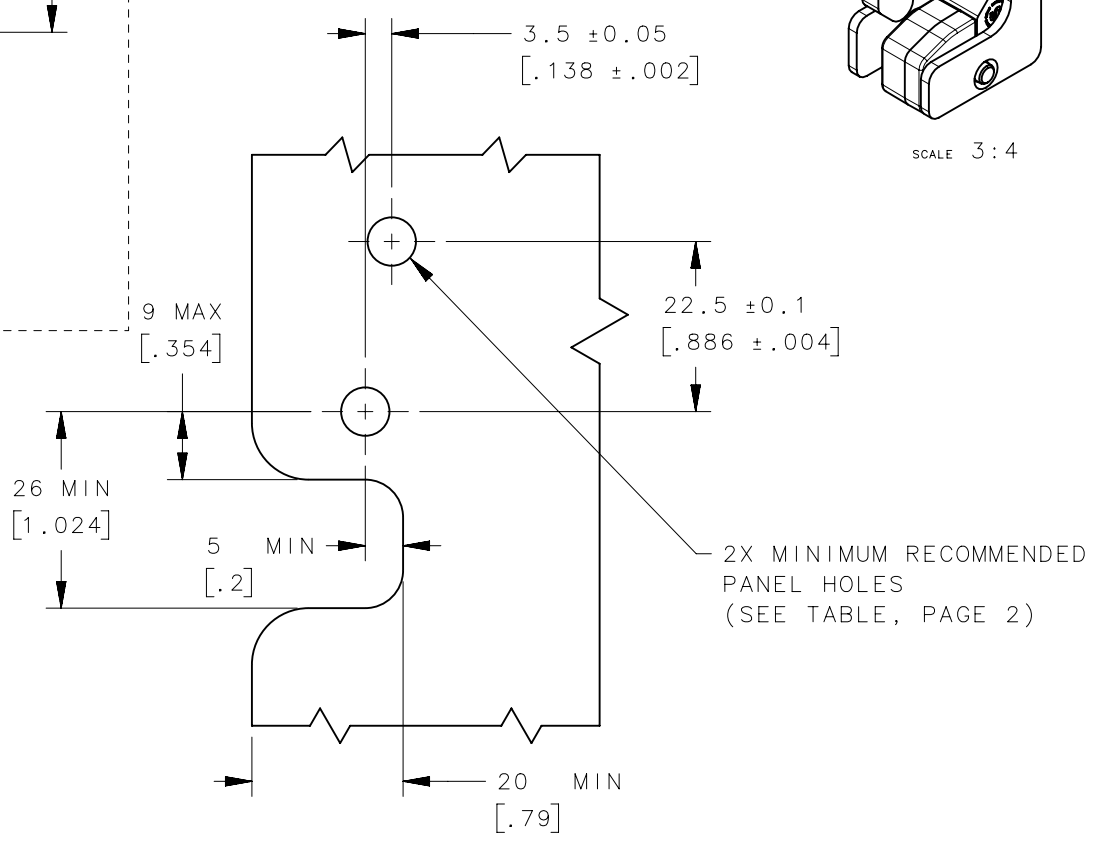
REVISION HISTORY			
REV	DATE	BY	DESCRIPTION
E	13MAY2024	CMS/CLB	PRN: P2024-0502

IN-LINE

TWO POINT



PANEL PREPARATION



ASSEMBLY PART No.

R4-10-□□-□□05-10

STAGE & ACTUATION

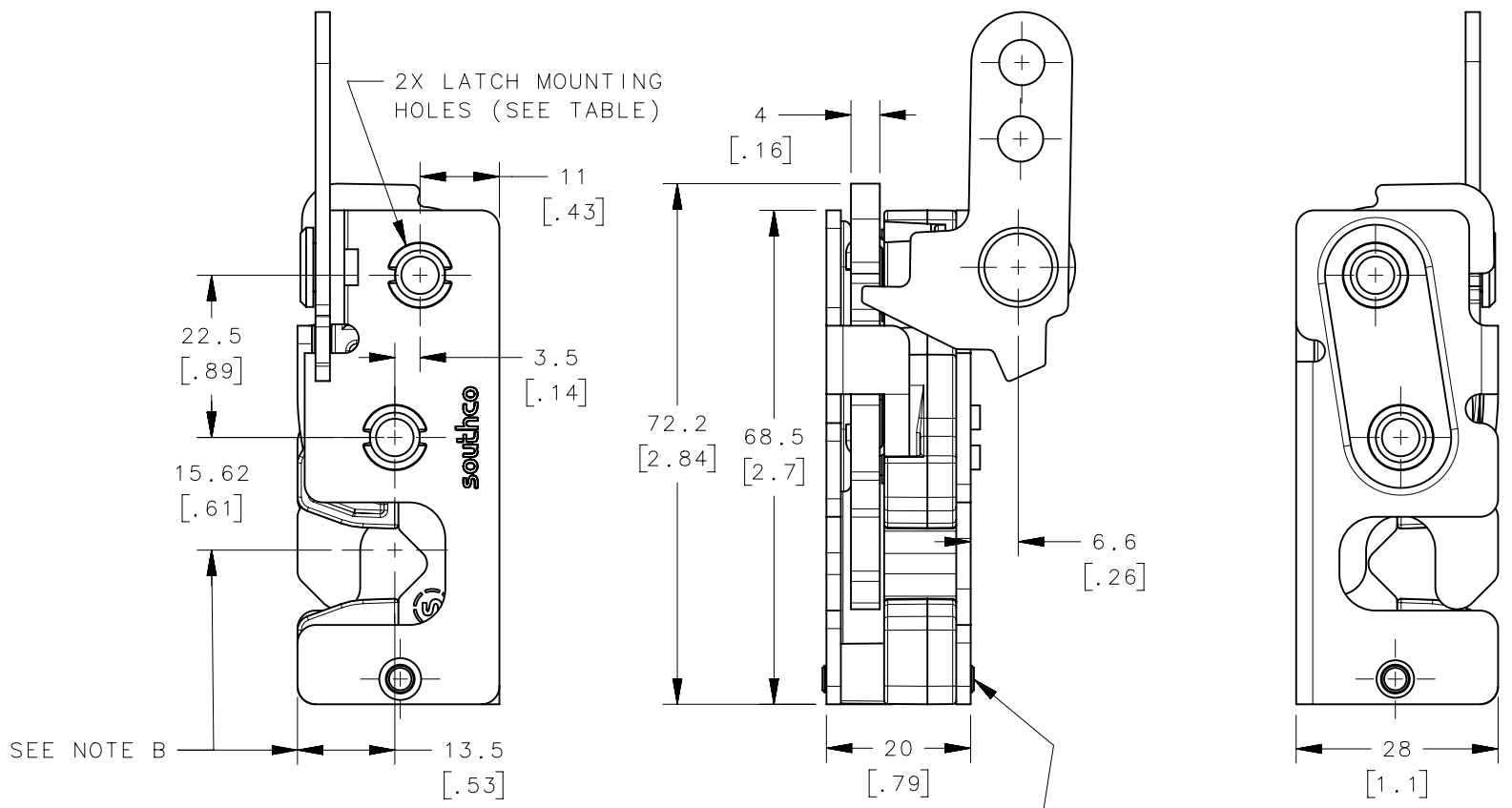
- 1 - SINGLE STAGE, RIGHT HAND
- 3 - TWO-STAGE, RIGHT HAND

MOUNTING STYLE

- 0 - ϕ 7.2 [.283] THRU
- 1 - 1/4-20 THREAD
- 2 - M6x1 THREAD

LEVER TYPE

- 1 - PERPENDICULAR
- 2 - IN-LINE
- 3 - TWO POINT



AFTER RIVETING, PIN TO BE RIVETED FLUSH WITH FRAMES

- NOTES:
- A. MATERIAL AND FINISH:
 - HOUSING, LEVER, RIVET AND INTERNAL COMPONENTS: STEEL, ZINC PLATED, BRIGHT CHROMATE
 - PAWL AND TRIGGER: HARDENED STEEL, ZINC PLATED, BRIGHT CHROMATE
 - SPRING: STEEL, PTFE COATING, BLACK .
 - B. THESE DIMENSIONS REQUIRED FOR MOUNTING STRIKER BOLT.
 - C. ϕ 6.3 (.25) LEVER HOLES USE OPTIONAL CABLE RETAINER R4-0-43922 SOLD SEPARATELY.

THIRD ANGLE PROJECTION				
MILLIMETERS [IN]	DESCRIPTION			
TOLERANCES UNLESS OTHERWISE NOTED	R4 MINI ROTARY LATCH			
ALL DIMENSIONS WITHOUT TOLERANCES ARE FOR REFERENCE ONLY.	RIGHT HAND - BSR INSERT			
PROPRIETARY ITEM	SIZE	SYSTEM	DWG NO.	
EXCEPT FOR USES EXPRESSLY GRANTED IN WRITING, INFORMATION DISCLOSED HEREON IS CONFIDENTIAL AND ALL RIGHTS, PATENT AND OTHERWISE, ARE RESERVED BY SOUTHCO, INC.	B	NX	J-R4-10-5AR	
PER ASME Y14.5M-2009	DRAWN BY	DATE	SCALE	SHEET
	CMG/DGJ	06MAY2014	1:1	1 OF 2

6

5

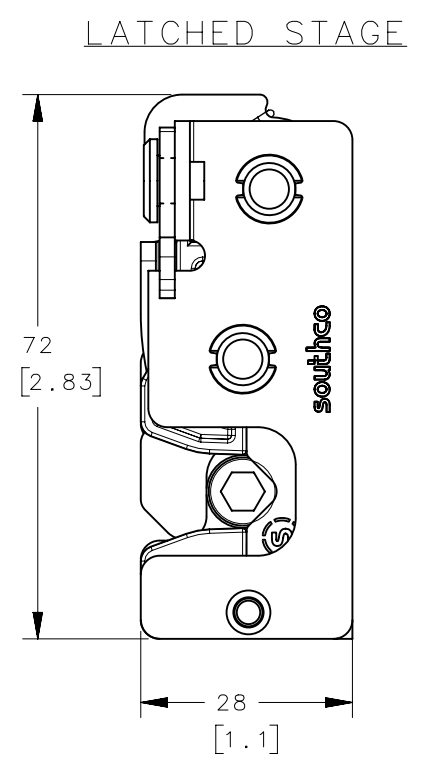
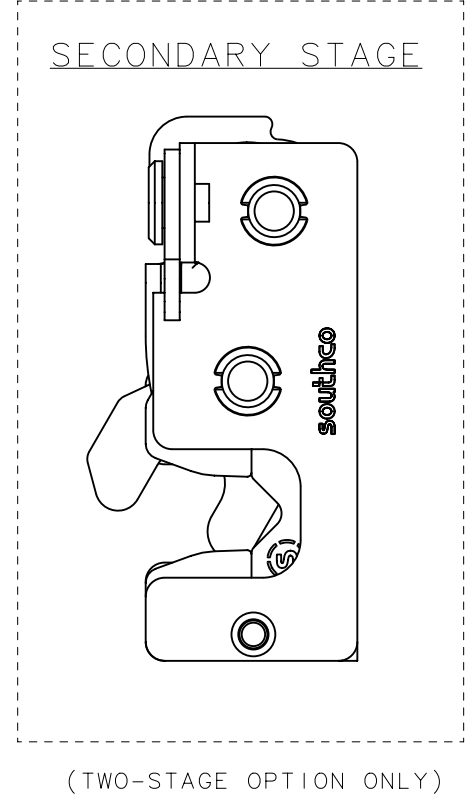
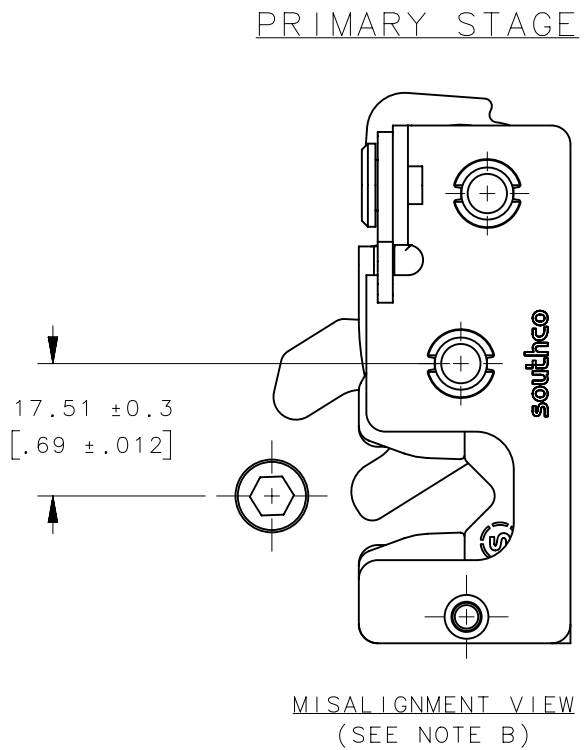
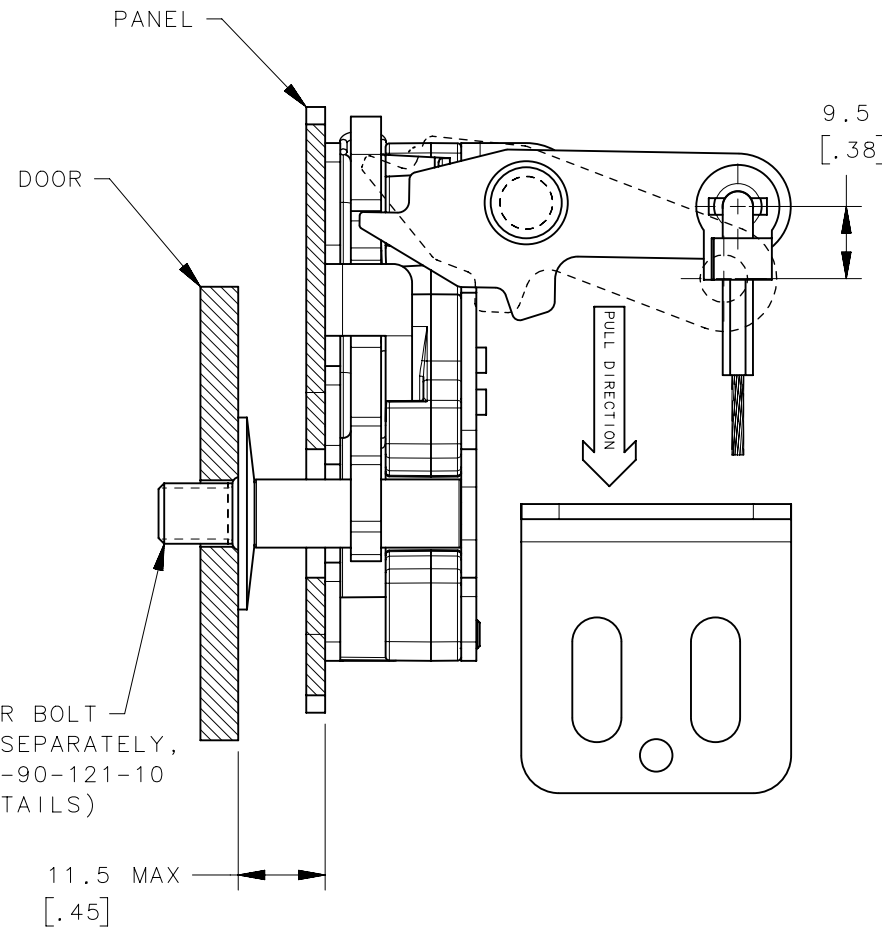
4

3

2

1

REVISION HISTORY			
REV	DATE	BY	DESCRIPTION
E	13MAY2024	CMS/CLB	PRN: P2024-0502



- NOTES:
- A. THE TOLERANCE BETWEEN THE LATCH AND STRIKER BOLT ASSUMES A NON-RIGID DOOR INSTALLATION THAT WILL ALLOW THE DOOR TO MOVE INTO THE NOMINAL POSITION DURING LATCHING. RIGID DOORS MUST HAVE THE STRIKER INSTALLED PER THE PANEL PREPARATION RECOMMENDATION.
 - B. THE MISALIGNMENT VIEW ASSUMES THE LATCH IS CONNECTED TO A PERFECTLY RIGID DOOR AND HINGE; THEREFORE, THERE IS NO DOOR AND/OR HINGE SLACK ASSOCIATED WITH THESE DIMENSIONS. THE MISALIGNMENT VIEW DOES NOT TAKE FLEXING OF THE STRIKER BOLT INTO ACCOUNT.

R4-10-X0-X05-10	∅ 7.2mm THRU	∅ 7.2 [.299]
R4-10-X1-X05-10	1/4-20 THREAD	∅ 6.8 [.268]
R4-10-X2-X05-10	M6x1 THREAD	∅ 6.4 [.252]
ASSEMBLY PART NUMBER	MOUNTING STYLE	MINIMUM PANEL HOLE

THIRD ANGLE PROJECTION			 CONNECT • CREATE • INNOVATE	
TOLERANCES UNLESS OTHERWISE NOTED		DESCRIPTION		
ALL DIMENSIONS WITHOUT TOLERANCES ARE FOR REFERENCE ONLY.		R4 MINI ROTARY LATCH RIGHT HAND - BSR INSERT		
PROPRIETARY ITEM <small>EXCEPT FOR USES EXPRESSLY GRANTED IN WRITING, INFORMATION DISCLOSED HEREON IS CONFIDENTIAL AND ALL RIGHTS, PATENT AND OTHERWISE, ARE RESERVED BY SOUTHCO, INC.</small>	PER ASME Y14.5M-2009	SIZE B	SYSTEM NX	DWG NO. J-R4-10-5AR
DRAWN BY CMG/DGJ		DATE 06MAY2014	SCALE 1:1	SHEET 2 OF 2