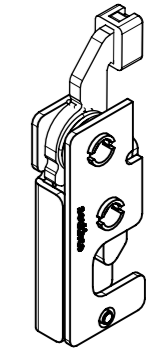


REVISION HISTORY			
REV	DATE	BY	DESCRIPTION
E	13DEC2023	PSP/SAK	PRN: P2023-2237

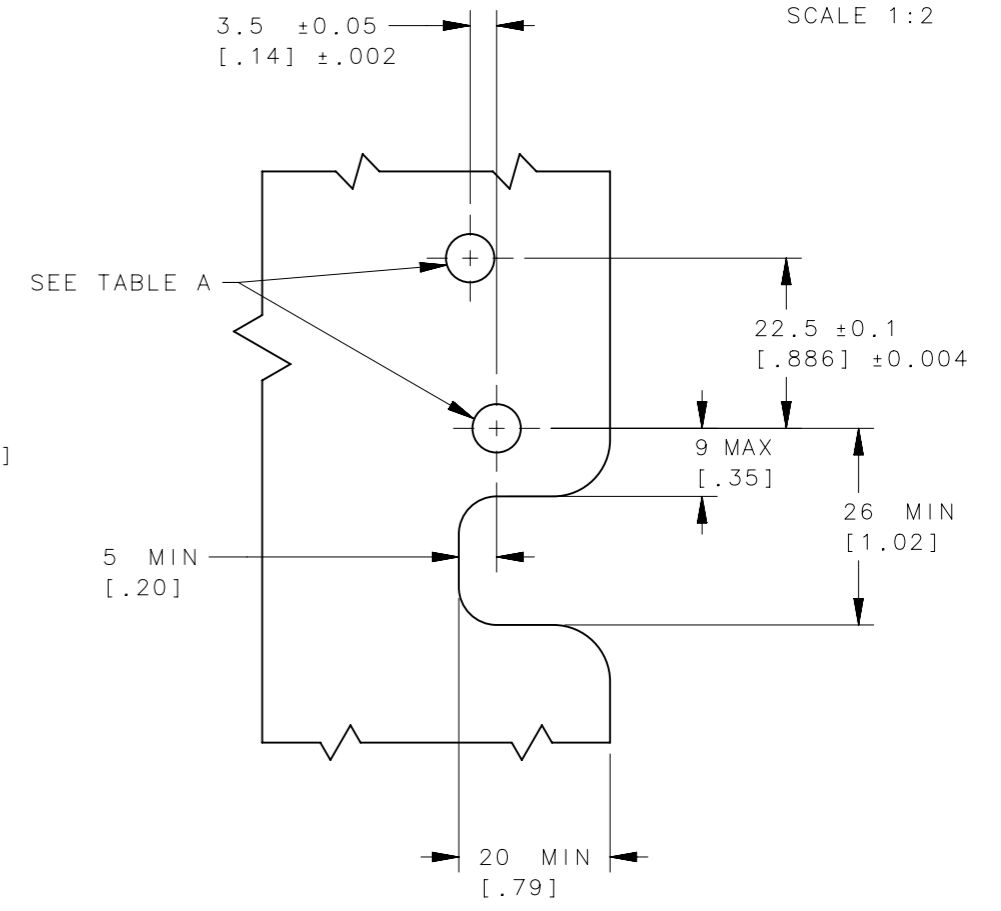
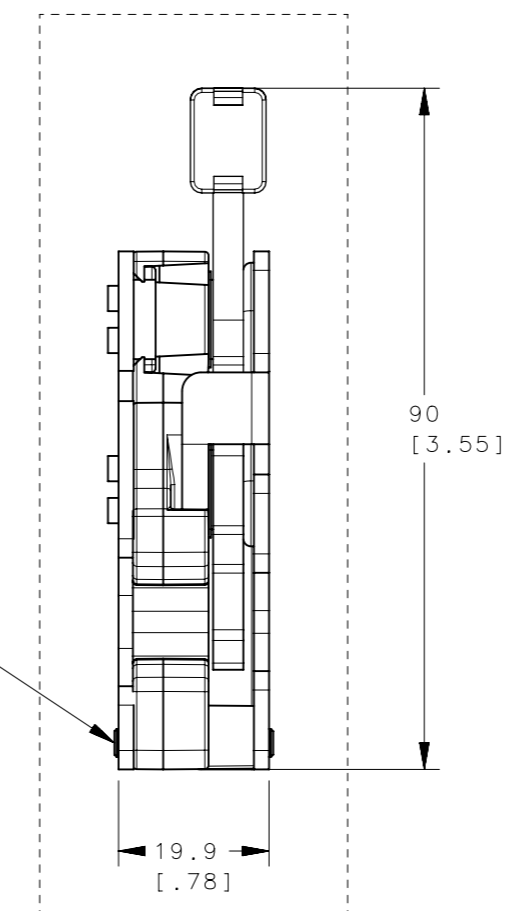
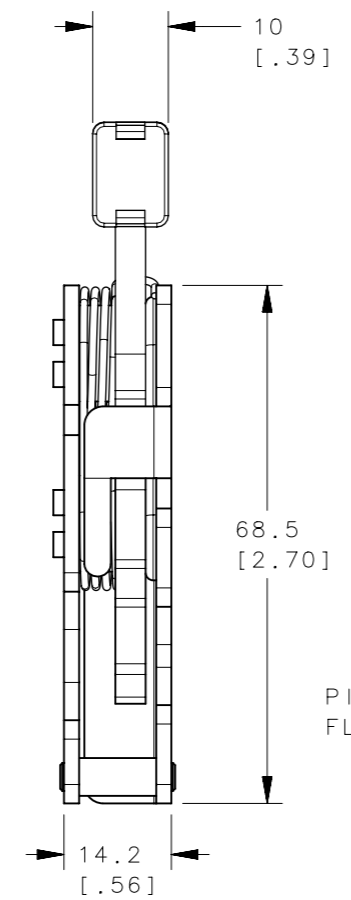
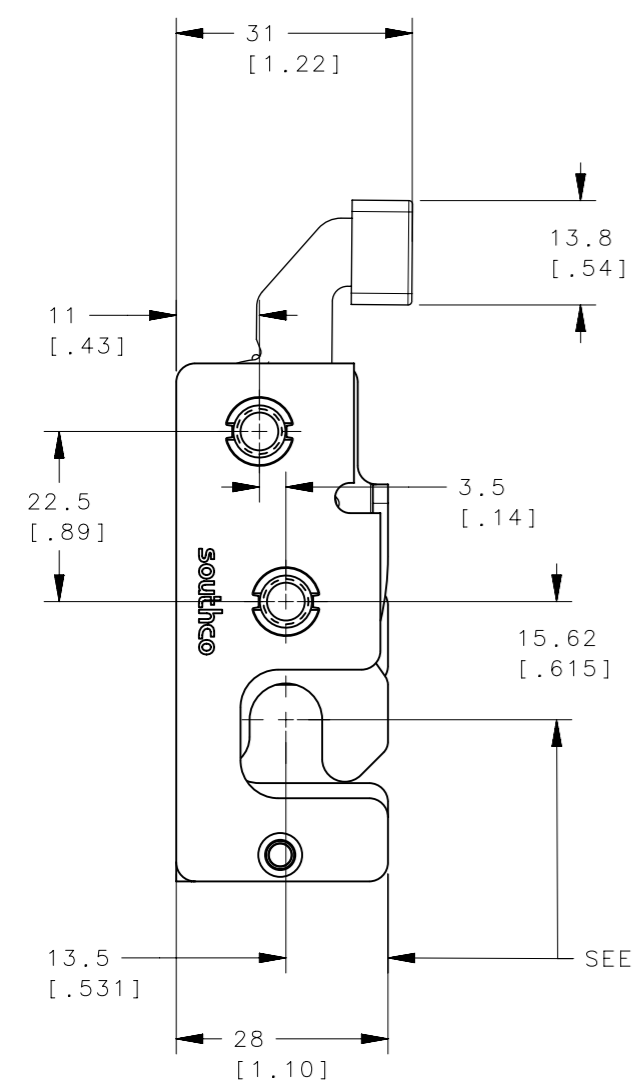


ISOMETRIC VIEW
SCALE 1:2

STANDARD (NO BUMPER)

INTEGRATED BUMPER

PANEL PREPARATION



ASSEMBLY PART No.

R4-10-□-90□-□

- | | | | |
|--|---|--|---|
| STAGE & ACTUATION | MOUNTING STYLE | BUMPER OPTION | MATERIAL |
| 2- SINGLE STAGE, LEFT HAND
4- DUAL STAGE, LEFT HAND | 0- Ø 7.2 THRU
1- 1/4-20 THREAD
2- M6x1 THREAD | 1- STANDARD (WITHOUT BUMPER)
5- INTEGRATED BUMPER | 1- LOW CARBON STEEL
2- STAINLESS STEEL |

- NOTES:
- A. THESE DIMENSIONS ARE REQUIRED FOR MOUNTING STRIKER BOLT.
- B: FINISH:
LOW CARBON STEEL COMPONENTS: ZINC PLATE, BRIGHT CHROMATE
STAINLESS STEEL COMPONENTS: PASSIVATED
EXCEPT SPRING: STEEL, PTFE COATING, BLACK.

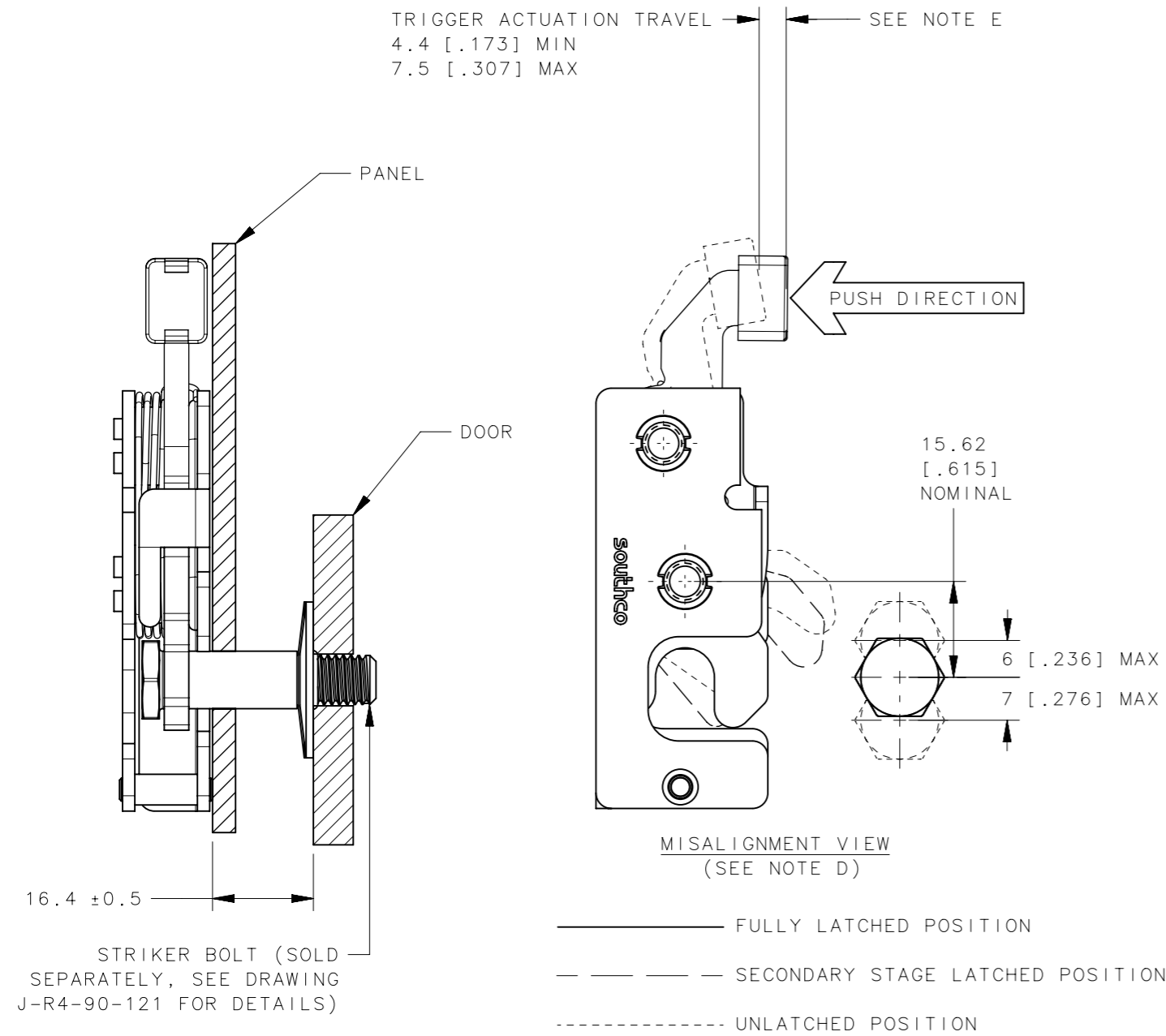
TABLE A	
MOUNTING STYLE	MINIMUM RECOMMENDED PANEL HOLE
Ø 7.2 THRU	Ø 7.6 [.299]
1/4-20 THREAD	Ø 6.8 [.268]
M6x1 THREAD	Ø 6.4 [.252]

THIRD ANGLE PROJECTION	MILLIMETERS [IN]		TOLERANCES UNLESS OTHERWISE NOTED		 CONNECT • CREATE • INNOVATE	
ALL DIMENSIONS WITHOUT TOLERANCES ARE FOR REFERENCE ONLY.			R4-10 MINI ROTARY LATCH, DIRECT ACTUATION - LEFT HAND		SIZE A3 SYSTEM NX DWG NO. J-R4-10-9L	
PER ASME Y14.5M-2009			DRAWN BY CMG/DGJ		DATE 04AUG2015 SCALE 1:1 SHEET 1 OF 2	

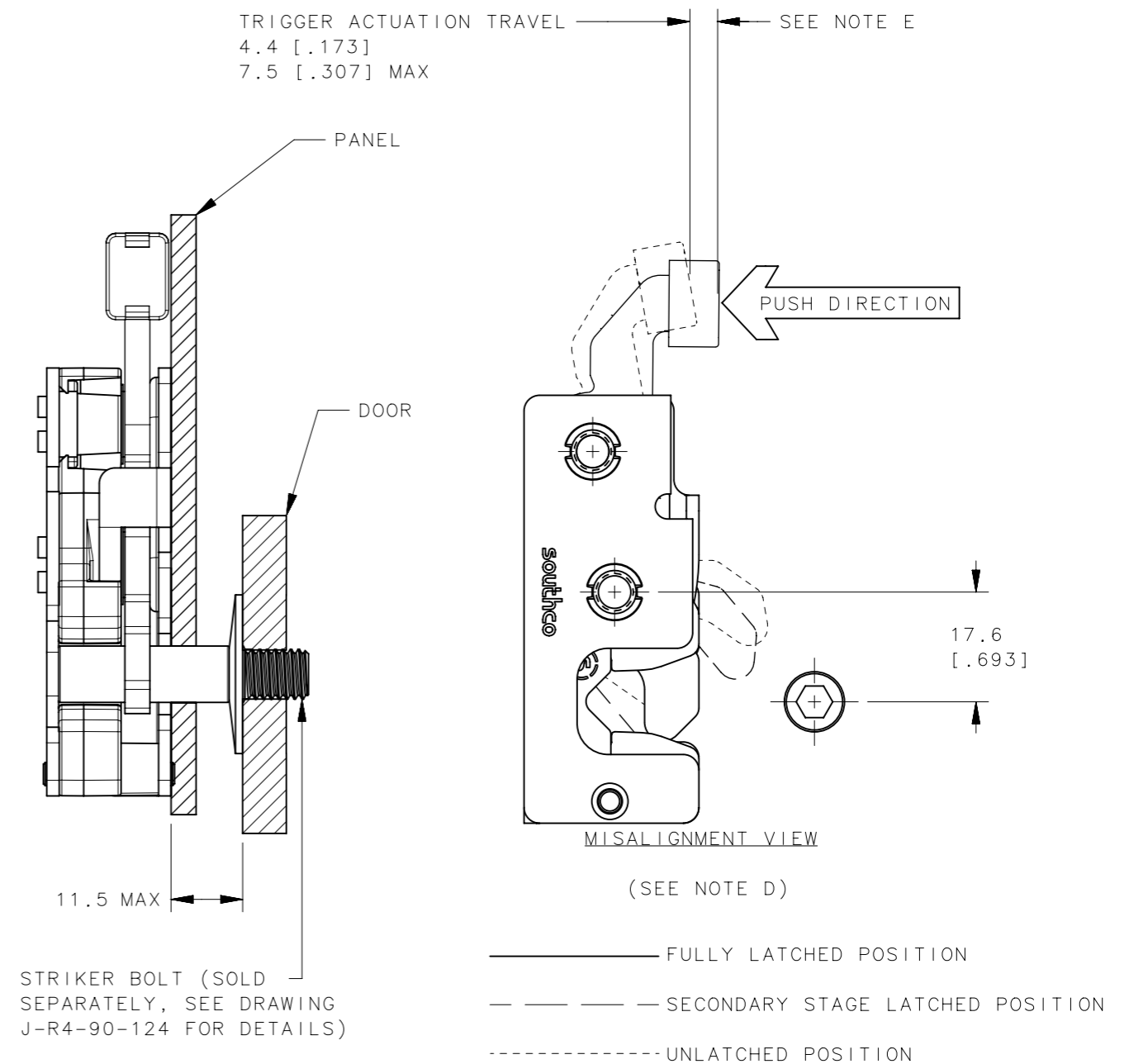
PROPRIETARY ITEM
EXCEPT FOR USES EXPRESSLY GRANTED IN WRITING, INFORMATION DISCLOSED HEREON IS CONFIDENTIAL AND ALL RIGHTS, PATENT AND OTHERWISE, ARE RESERVED BY SOUTHCO, INC.

REVISION HISTORY			
REV	DATE	BY	DESCRIPTION
E	13DEC2023	PSP/SAK	PRN: P2023-2237

STANDARD (NO BUMPER)



INTEGRATED BUMPER



NOTES:

C: THE TOLERANCE BETWEEN THE LATCH AND STRIKER BOLT ASSUMES A NON RIGID DOOR INSTALLATION THAT WILL ALLOW THE DOOR TO MOVE INTO THE NOMINAL POSITION DURING LATCHING. RIGID DOORS MUST HAVE THE STRIKER INSTALLED PER THE PANEL PREPARATION RECOMMENDATION.

D: THE MISALIGNMENT VIEW ASSUMES THE LATCH IS CONNECTED TO A PERFECTLY RIGID DOOR AND HINGE; THEREFORE, THERE IS NO DOOR AND/OR HINGE SLACK ASSOCIATED WITH THESE DIMENSIONS. THE MISALIGNMENT VIEW DOES NOT TAKE FLEXING OF THE STRIKER BOLT INTO ACCOUNT.

E: ADD ADDITIONAL 2 MILLIMETERS ACTUATION TRAVEL IF RUBBER BOOT REMOVED.

THIRD ANGLE PROJECTION			
MILLIMETERS [IN]			
TOLERANCES UNLESS OTHERWISE NOTED		DESCRIPTION	
ALL DIMENSIONS WITHOUT TOLERANCES ARE FOR REFERENCE ONLY.		R4-10 MINI ROTARY LATCH, DIRECT ACTUATION - LEFT HAND	
PROPRIETARY ITEM	PER ASME Y14.5M-2009	SIZE A3	SYSTEM NX
EXCEPT FOR USES EXPRESSLY GRANTED IN WRITING, INFORMATION DISCLOSED HEREON IS CONFIDENTIAL AND ALL RIGHTS, PATENT AND OTHERWISE, ARE RESERVED BY SOUTHCO, INC.	DRAWN BY CMG/DGJ	DWG NO. J-R4-10-9L	DATE 04AUG2015
		SCALE 1:1	SHEET 2 OF 2