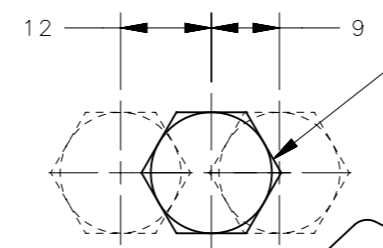
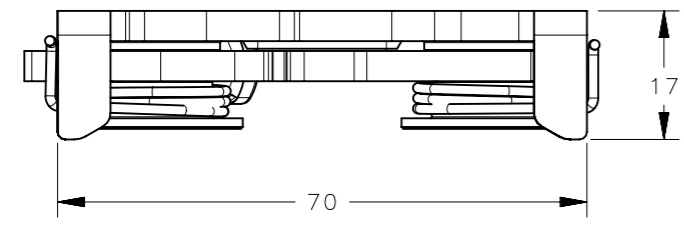
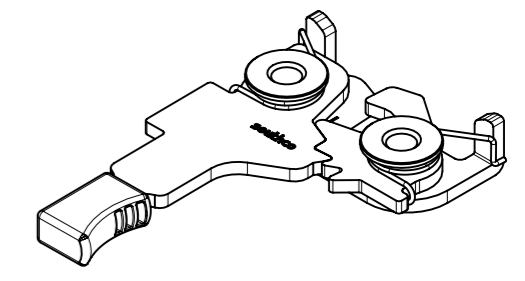


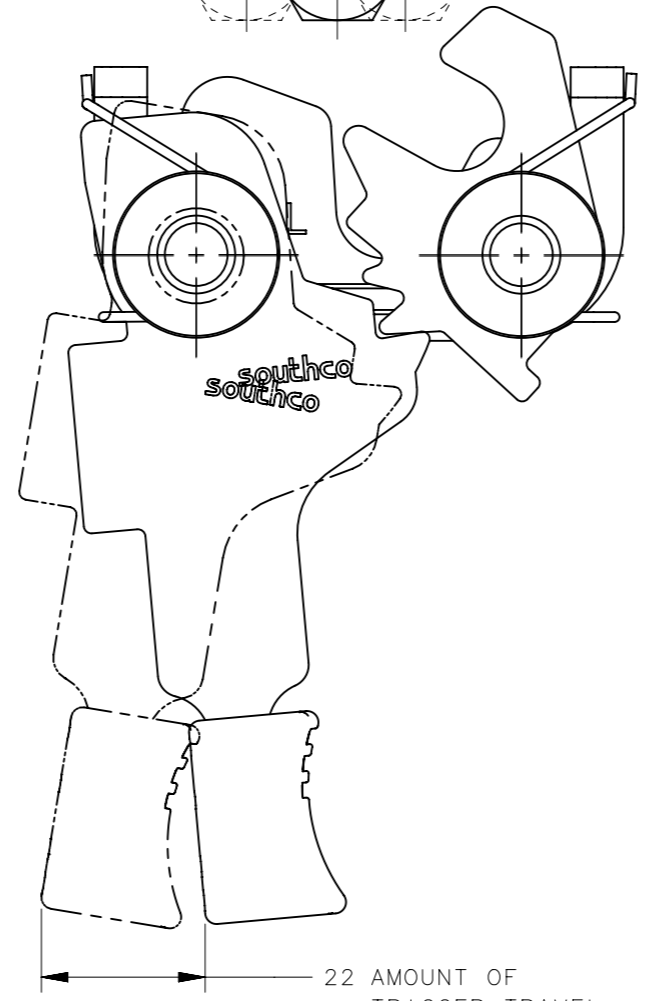
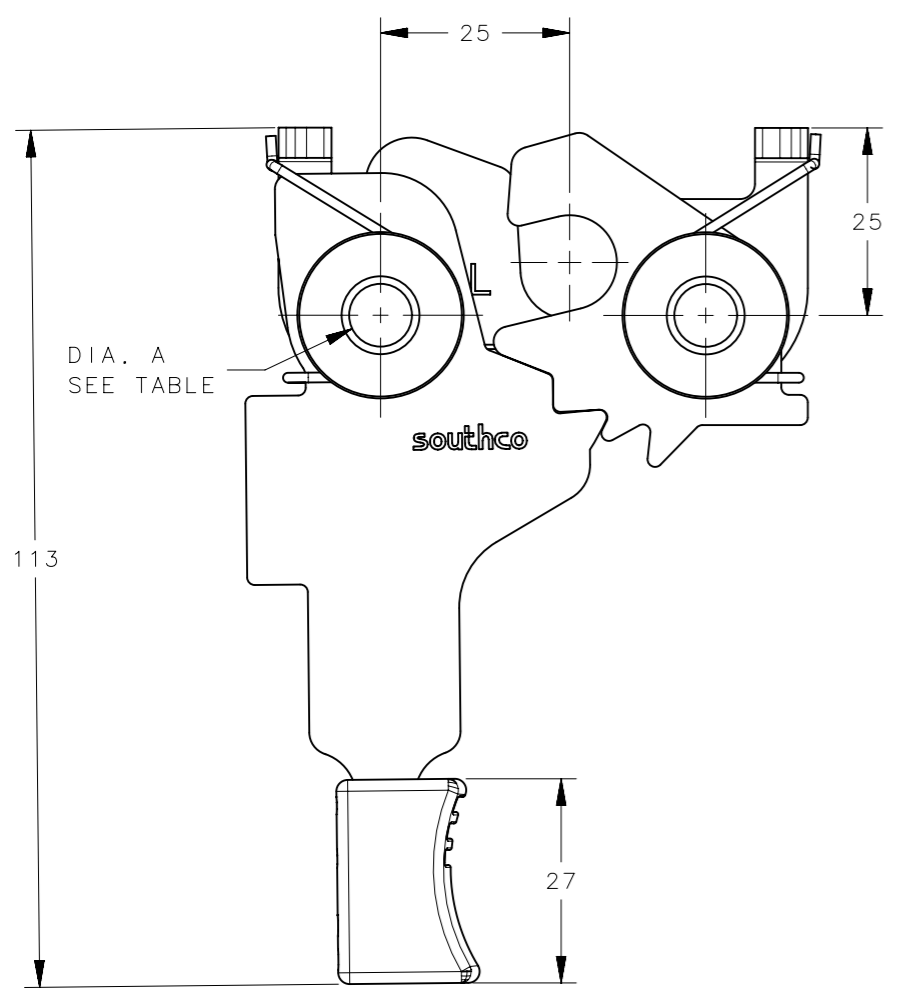
REVISION HISTORY			
REV	DATE	BY	DESCRIPTION
B	15JUN2016	VK/YGC	PRN: P2016-1381



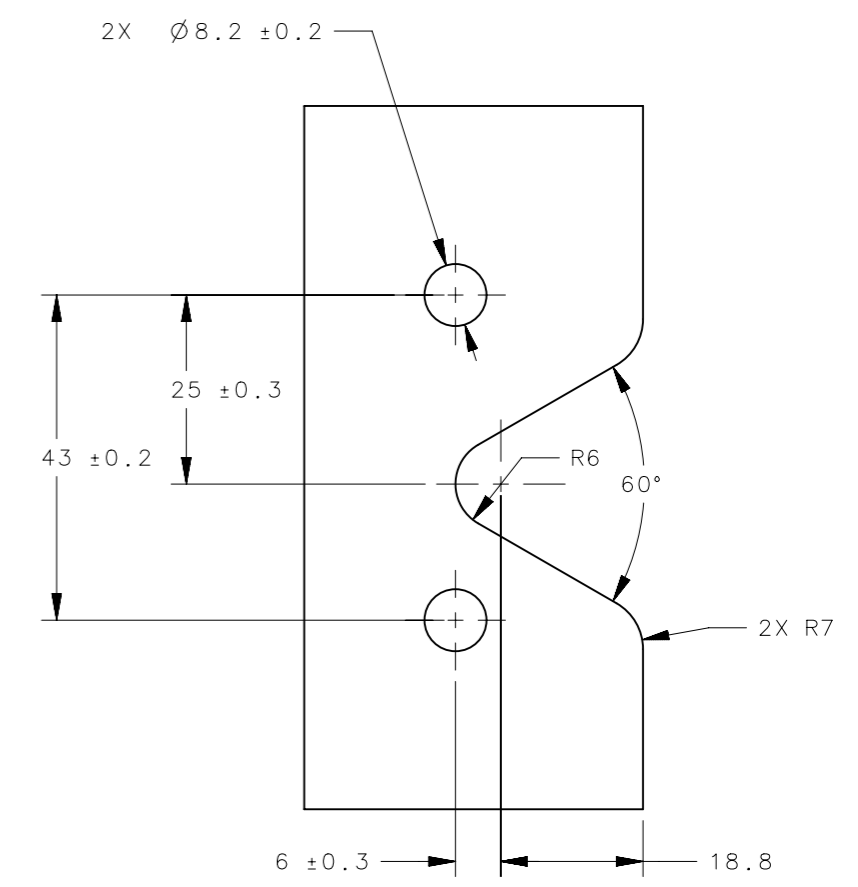
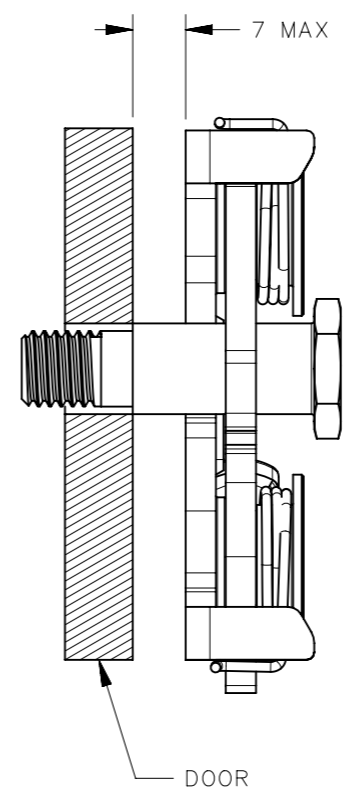
STRIKER BOLT
PART NUMBER R4-91-2X1-10
(SOLD SEPARATELY
SEE DRAWING J-R4-91-200 FOR DETAILS)



SCALE 1:2



MISALIGNMENT VIEW
(SEE NOTE 2)



PANEL PREPARATION

- NOTES:
- MATERIAL AND FINISH:
 - A. HOUSING AND PIN: STEEL, ZINC PLATED, BRIGHT CHROMATE
 - B. PAWL AND TRIGGER: HARDENED STEEL, ZINC PLATED BRIGHT CHROMATE.
 - C. SPRING: STAINLESS STEEL, PASSIVATED
 - THE TOLERANCE BETWEEN THE LATCH AND STRIKER BOLT ASSUMES A NON-RIGID DOOR INSTALLATION THAT WILL ALLOW THE DOOR TO MOVE INTO THE NOMINAL POSITION DURING LATCHING. RIGID DOORS MUST HAVE THE STRIKER INSTALLED PER THE PANEL PREPERATION RECOMMENDATION.

PART NUMBER	ITEM	DIMENSION A	MATERIAL	FINISH
R4-20-42-401-10	M8 ASSEMBLY	M8 X 1.25	SEE NOTE 1	SEE NOTE 1
R4-20-41-401-10	5/16-18 ASSEMBLY	5/16-18 THREAD	SEE NOTE 1	SEE NOTE 1
R4-20-40-401-10	8.3mm THRU ASSEMBLY	Ø 8.3 ± .12	SEE NOTE 1	SEE NOTE 1

THIRD ANGLE PROJECTION								
MILLIMETERS [IN]		DESCRIPTION						
TOLERANCES UNLESS OTHERWISE NOTED		R4-20 LEFT HAND ASSEMBLY DUAL STAGE WITH HANDLE						
ALL DIMENSIONS WITHOUT TOLERANCES ARE FOR REFERENCE ONLY.		SIZE	SYSTEM	DWG NO.	J-R4-20-40-401			
PROPRIETARY ITEM		A3	NX					
EXCEPT FOR USES EXPRESSLY GRANTED IN WRITING, INFORMATION DISCLOSED HEREON IS CONFIDENTIAL AND ALL RIGHTS, PATENT AND OTHERWISE, ARE RESERVED BY SOUTHCO, INC.		PER ASME Y14.5M-1994	DRAWN BY	DATE	SCALE	SHEET		
			VK	17FEB2016	1:1	1 OF 1		