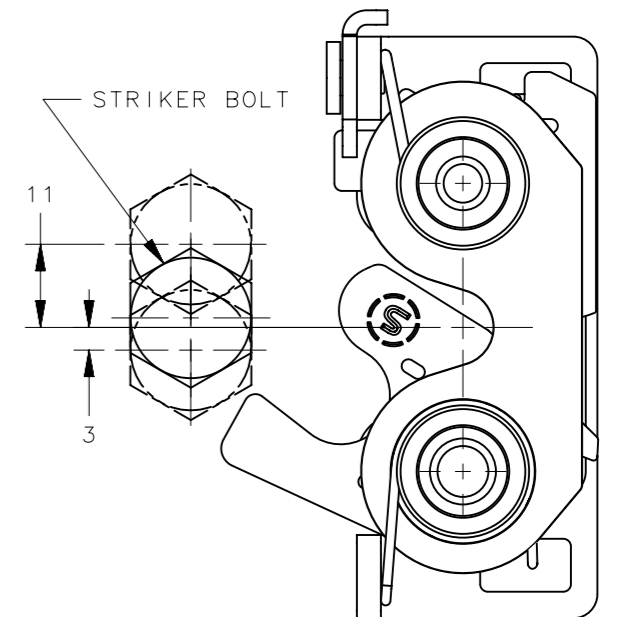
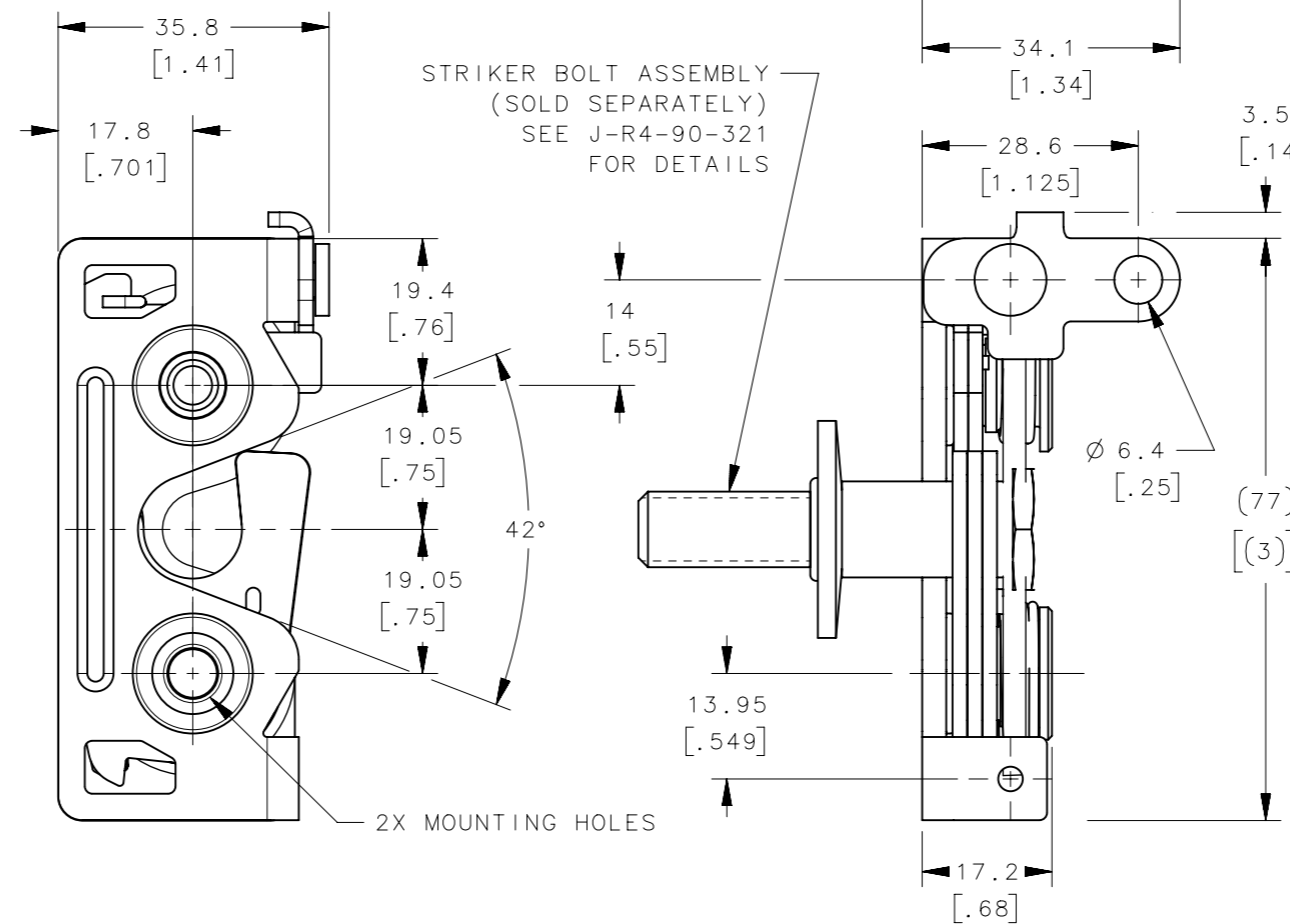
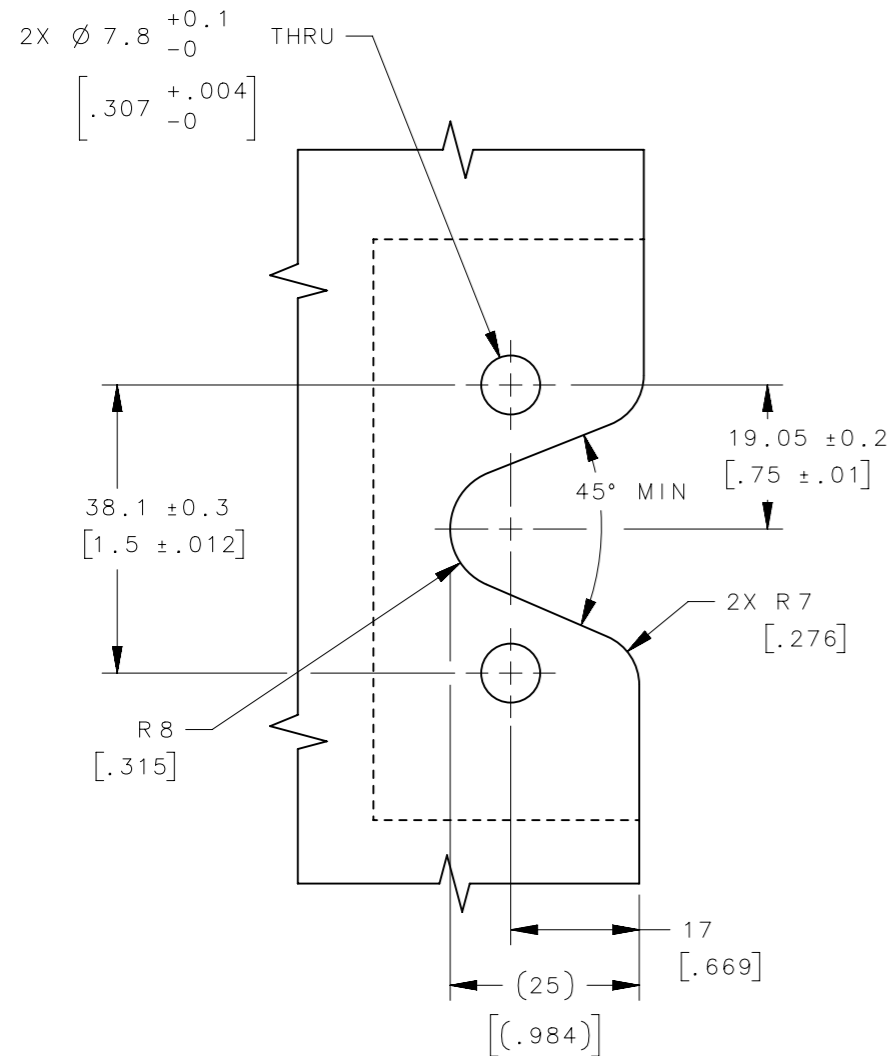
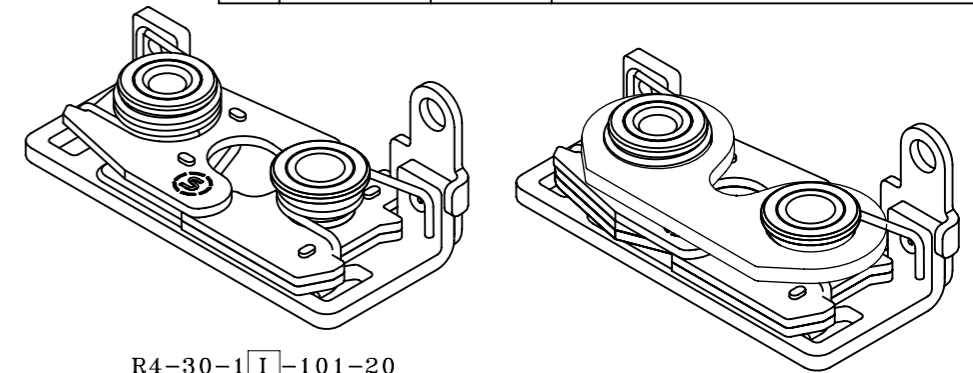


R4-30-1 I - 10 B - M

REVISION HISTORY			
REV	DATE	BY	DESCRIPTION
C	23FEB2024	SAK/DMS	PRN: P2024-0342

- | | | |
|--------------------------|---------------------|--------------------------------|
| I MOUNTING OPTION | B LATCHING | M MATERIAL |
| 0 6.7 mm THRU HOLE | 1 STANDARD | 20 STAINLESS STEEL, PASSIVATED |
| 1 1/4-20 THREAD | 5 INTEGRATED BUMPER | |
| 2 M6 THREAD | | |



NOTES: PANEL PREPARATION

- MATERIAL AND FINISH:
 - HOUSING, LEVER AND INTERNAL COMPONENTS: STEEL, ZINC PLATED, BRIGHT CHROMATE
 - PAWL AND TRIGGER: HARDENED STEEL, ZINC PLATED, BRIGHT CHROMATE
 - SPRINGS: STAINLESS STEEL, PASSIVATED
- THE MISALIGNMENT VIEW ASSUMES THE LATCH IS CONNECTED TO A PERFECTLY RIGID DOOR AND HINGE; THEREFORE, THERE IS NO DOOR AND/OR HINGE SLACK ASSOCIATED WITH THESE DIMENSIONS, THE MISALIGNMENT VIEW DOES NOT TAKE FLEXING OF THE STRIKER BOLT INTO ACCOUNT.
- SAME AS R4-30-3X-101-20 EXCPET SINGLE STAGE.
- RECOMMENDED MOUNTING TORQUE IS 9 Nm (80 INCH LBS).

THIRD ANGLE PROJECTION			
TOLERANCES UNLESS OTHERWISE NOTED		DESCRIPTION	
ALL DIMENSIONS WITHOUT TOLERANCES ARE FOR REFERENCE ONLY		R4 LATCH ASSEMBLY - PERPENDICULAR RH, STEEL, SINGLE STAGE	
PROPRIETARY ITEM <small>EXCEPT FOR USES EXPRESSLY GRANTED IN WRITING, INFORMATION DISCLOSED HEREON IS CONFIDENTIAL AND ALL RIGHTS, PATENT AND OTHERWISE, ARE RESERVED BY SOUTHCO, INC.</small>	SIZE A3	SYSTEM NX	DWG NO. J-R4-30-10-101-20
PER ASME Y14.5M-2009	DRAWN BY RKS/VK	DATE 11DEC2019	SCALE 1:1 SHEET 1 OF 1