

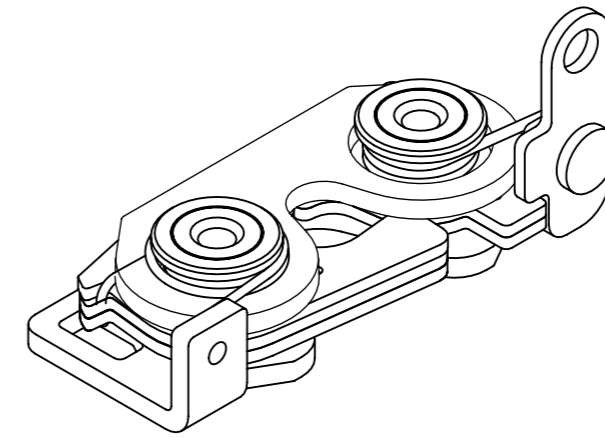
R4-30-2 I - 10 B - M

REVISION HISTORY			
REV	DATE	BY	DESCRIPTION
C	23FEB2024	SAK/DMS	PRN: P2024-0342

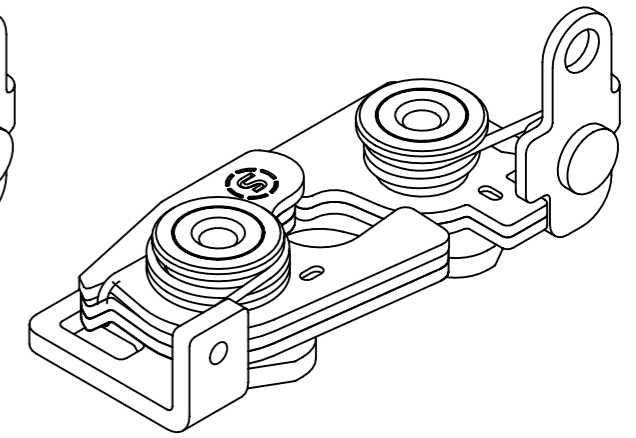
I MOUNTING OPTION
 0 6.7 mm THRU HOLE
 1 1/4-20 THREAD
 2 M6 THREAD

B LATCHING
 1 STANDARD
 5 INTEGRATED BUMPER

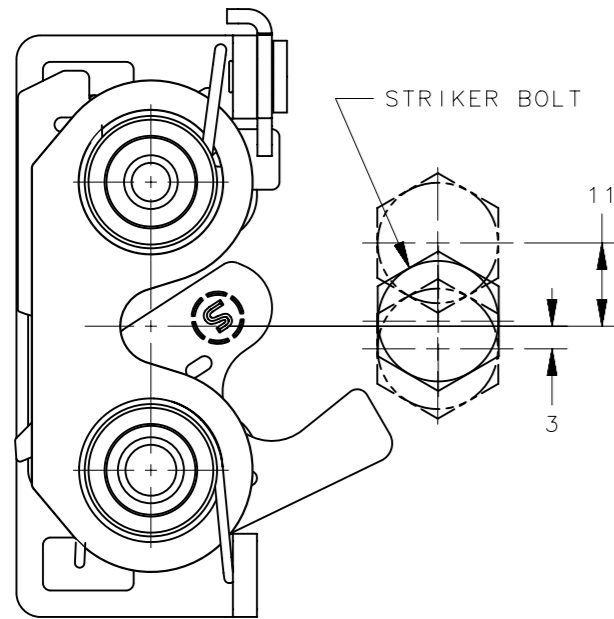
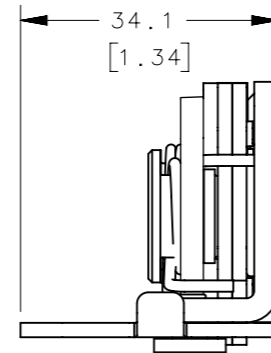
M MATERIAL
 20 STAINLESS STEEL, PASSIVATED



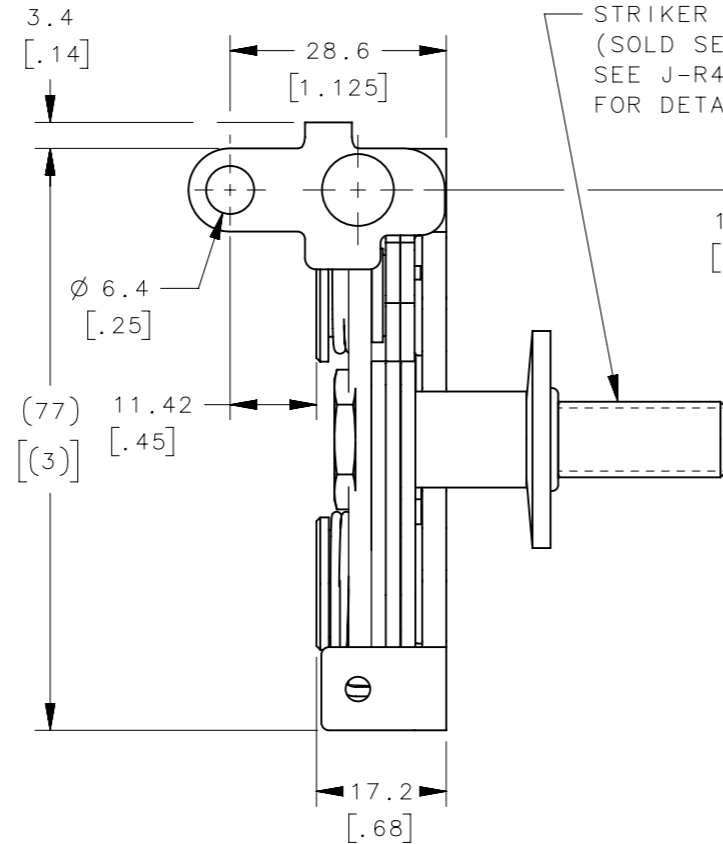
R4-30-2 I-105-20
(INTEGRATED BUMPER)



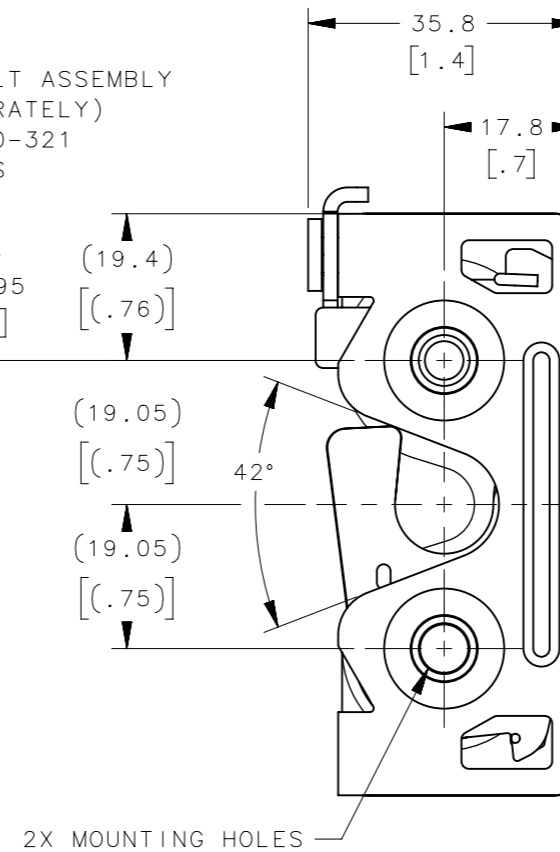
R4-30-2 I-101-20
(STANDARD)



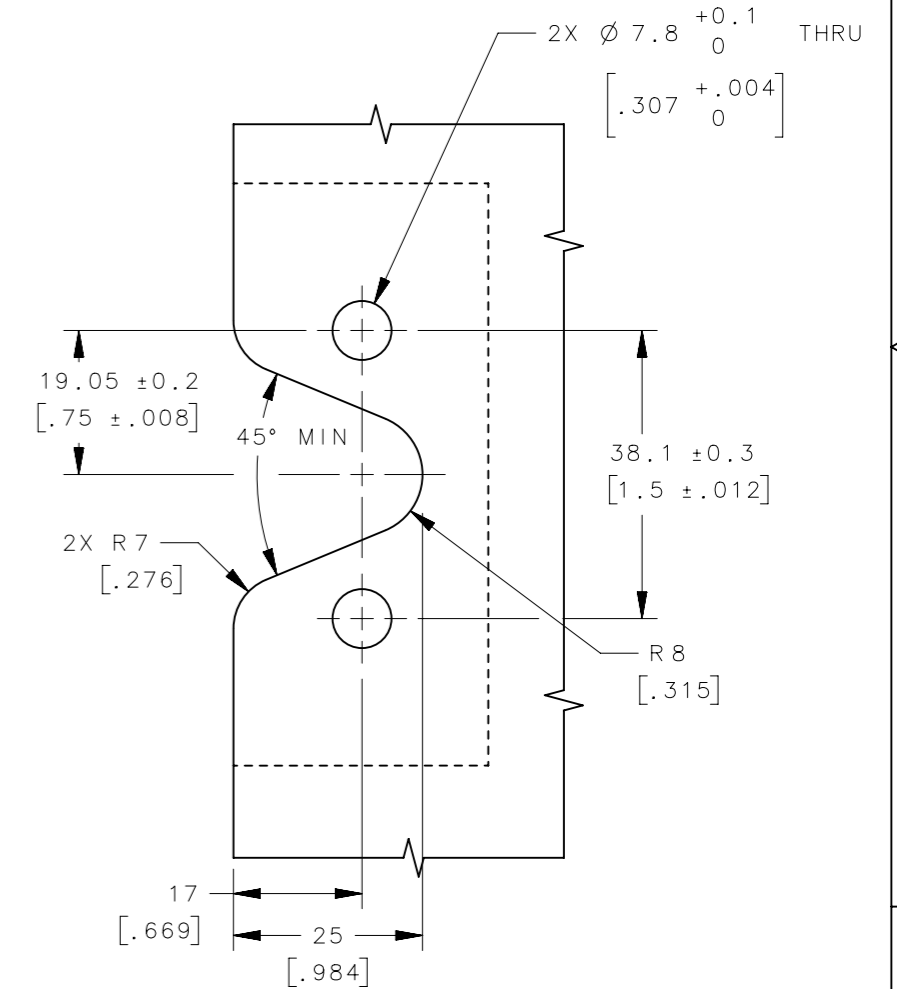
MISALIGNMENT VIEW
(SEE NOTE 2)



STRIKER BOLT ASSEMBLY
(SOLD SEPARATELY)
SEE J-R4-90-321
FOR DETAILS



2X MOUNTING HOLES



PANEL PREPARATION

NOTES:

- MATERIAL AND FINISH:
 - HOUSING, LEVER AND INTERNAL COMPONENTS: STAINLESS STEEL, PASSIVATED
 - PAWL AND TRIGGER: STAINLESS STEEL, PASSIVATED
 - SPRINGS: STAINLESS STEEL, PASSIVATED
- THE MISALIGNMENT VIEW ASSUMES THE LATCH IS CONNECTED TO A PERFECTLY RIGID DOOR AND HINGE; THEREFORE, THERE IS NO DOOR AND/OR HINGE SLACK ASSOCIATED WITH THESE DIMENSIONS, THE MISALIGNMENT VIEW DOES NOT TAKE FLEXING OF THE STRIKER BOLT INTO ACCOUNT.
- SAME AS R4-4X-101-20 EXCPET SINGLE STAGE.
- RECOMMENDED MOUNTING TORQUE IS 9 Nm (80 INCH LBS).

THIRD ANGLE PROJECTION				southco [®] CONNECT • CREATE • INNOVATE	
MILLIMETERS [IN]					
TOLERANCES UNLESS OTHERWISE NOTED		DESCRIPTION			
ALL DIMENSIONS WITHOUT TOLERANCES ARE FOR REFERENCE ONLY		R4 LATCH ASSEMBLY - PERPENDICULAR LH, SS, SINGLE STAGE			
PROPRIETARY ITEM	EXCEPT FOR USES EXPRESSLY GRANTED IN WRITING, INFORMATION DISCLOSED HEREON IS CONFIDENTIAL AND ALL RIGHTS, PATENT AND OTHERWISE, ARE RESERVED BY SOUTHCO, INC.	SIZE	SYSTEM	DWG NO.	
		A3	NX	J-R4-30-20-101-20	
PER ASME Y14.5M-2009		DRAWN BY	DATE	SCALE	SHEET
		RKS/VK	11DEC2019	1:1	1 OF 1