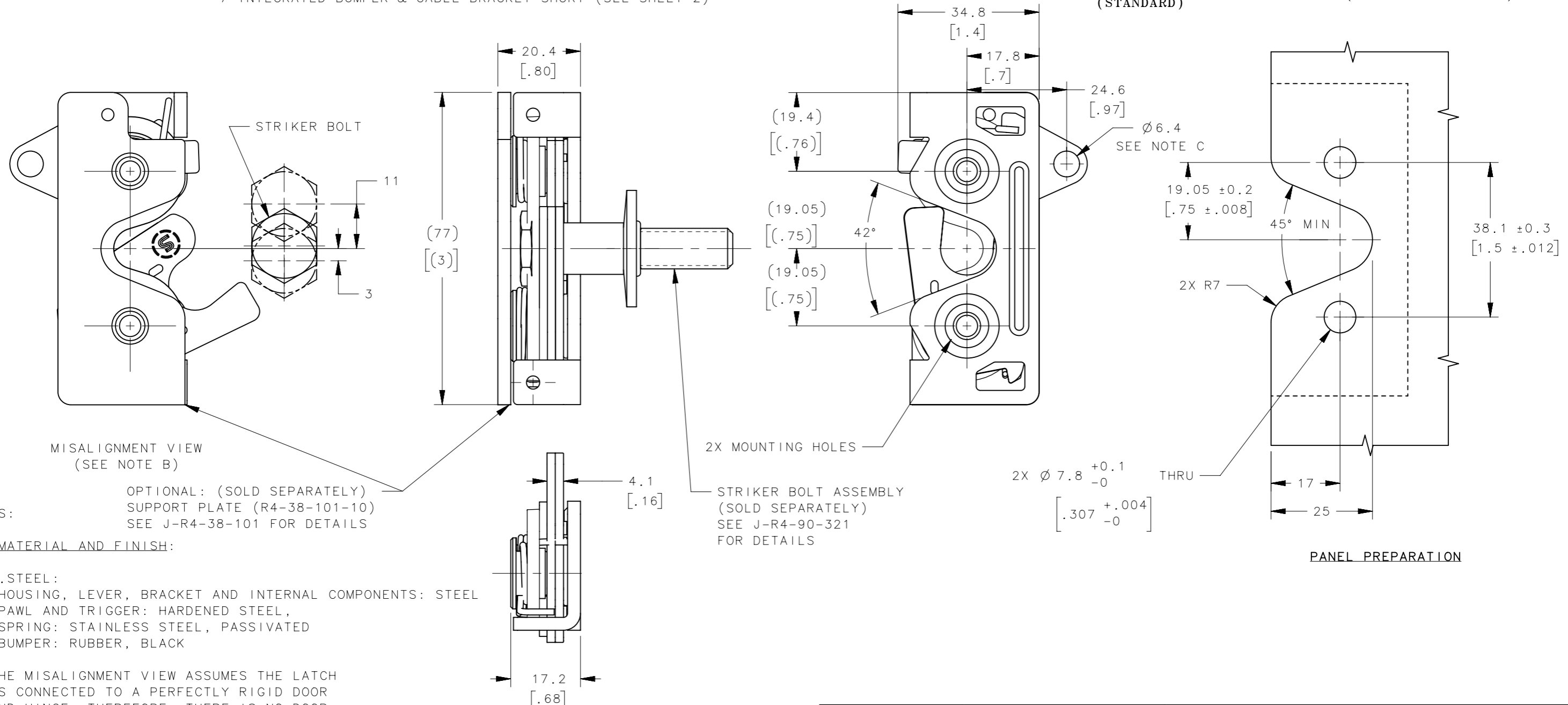
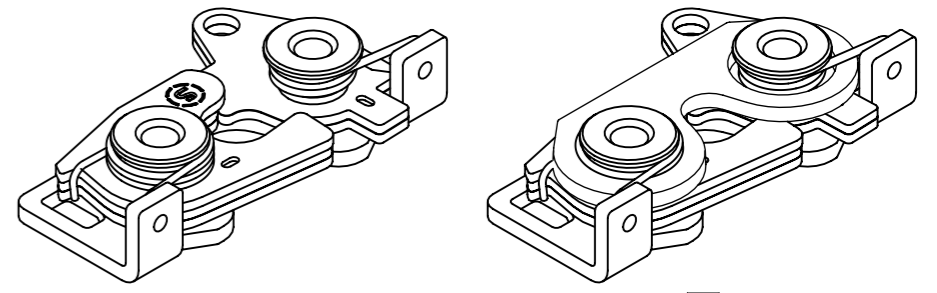


# R4-30-4 I-50 B-M

REVISION HISTORY			
REV	DATE	BY	DESCRIPTION
K	27FEB2024	SAK/DMS	PRN: P2024-0346

- |                          |   |                                    |
|--------------------------|---|------------------------------------|
| <b>I</b> MOUNTING OPTION | <b>B</b> BASE STYLE                                     | <b>M</b> MATERIAL                  |
| 0 6.7 mm THRU HOLE       | 1 STANDARD  | 10 STEEL, ZINC PLATED              |
| 1 1/4-20 THREAD          | 2 INTEGRATED CABLE BRACKET LONG (SEE SHEET 2)           | 15 STEEL, BLACK ZINC NICKEL PLATED |
| 2 M6 THREAD              | 3 INTEGRATED CABLE BRACKET SHORT (SEE SHEET 2)          | 77 STEEL, ZINC NICKEL PLATED       |
|                          | 5 INTEGRATED BUMPER                                     |                                    |
|                          | 6 INTEGRATED BUMPER & CABLE BRACKET LONG (SEE SHEET 2)  |                                    |
|                          | 7 INTEGRATED BUMPER & CABLE BRACKET SHORT (SEE SHEET 2) |                                    |



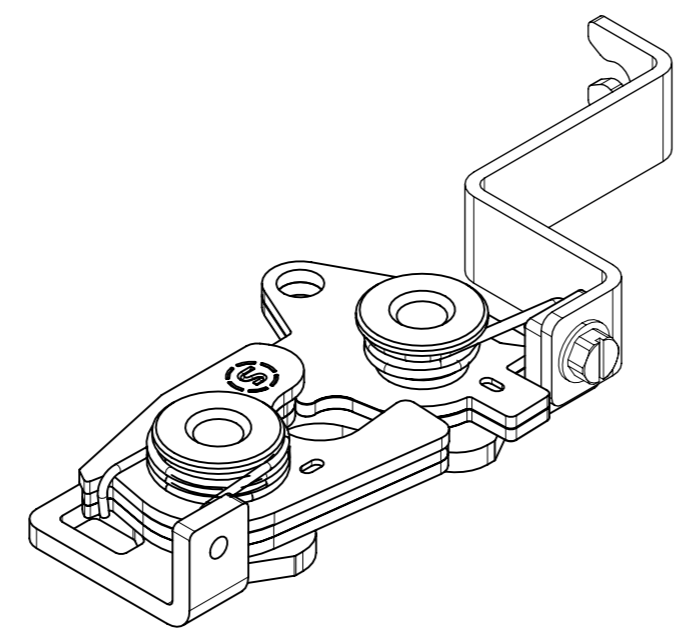
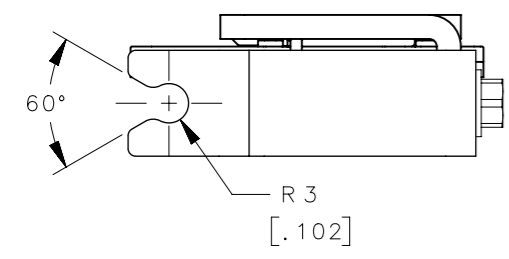
- NOTES:
- OPTIONAL: (SOLD SEPARATELY)  
SUPPORT PLATE (R4-38-101-10)  
SEE J-R4-38-101 FOR DETAILS
- A. MATERIAL AND FINISH:
1. STEEL:
- HOUSING, LEVER, BRACKET AND INTERNAL COMPONENTS: STEEL
  - PAWL AND TRIGGER: HARDENED STEEL,
  - SPRING: STAINLESS STEEL, PASSIVATED
  - BUMPER: RUBBER, BLACK
- B. THE MISALIGNMENT VIEW ASSUMES THE LATCH IS CONNECTED TO A PERFECTLY RIGID DOOR AND HINGE; THEREFORE, THERE IS NO DOOR AND/OR HINGE SLACK ASSOCIATED WITH THESE DIMENSIONS. THE MISALIGNMENT VIEW DOES NOT TAKE FLEXING OF THE STRIKER BOLT INTO ACCOUNT.
- C. FOR CABLE ACTUATION USE LINK RETAINER R4-0-43922-2
- D. RECOMMENDED MOUNTING TORQUE IS 9 Nm (80 INCH LBS)

THIRD ANGLE PROJECTION		 CONNECT • CREATE • INNOVATE	
MILLIMETERS [IN]			
TOLERANCES UNLESS OTHERWISE NOTED		DESCRIPTION	
ALL DIMENSIONS WITHOUT TOLERANCES ARE FOR REFERENCE ONLY.		R4 LATCH ASSEMBLY -BOTTOM PULLBACK LEFT HAND ACTUATION	
PER ASME Y14.5M-2009		SIZE	DWG NO.
		A3	NX
		DATE	SCALE
		18JUN2013	1:1
		SHEET 1 OF 2	

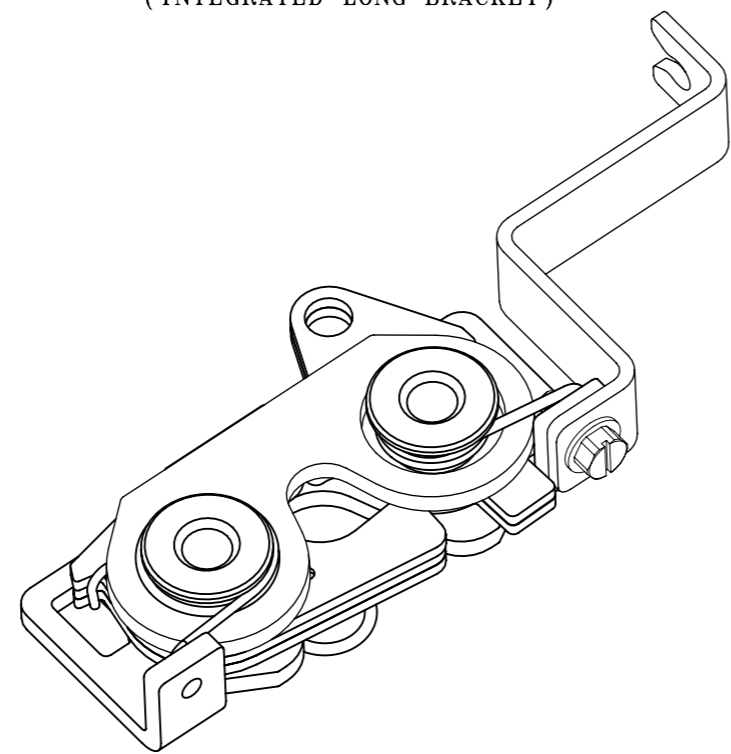
REVISION HISTORY			
REV	DATE	BY	DESCRIPTION
K	27FEB2024	SAK/DMS	PRN: P2024-0346

**LONG BRACKET**

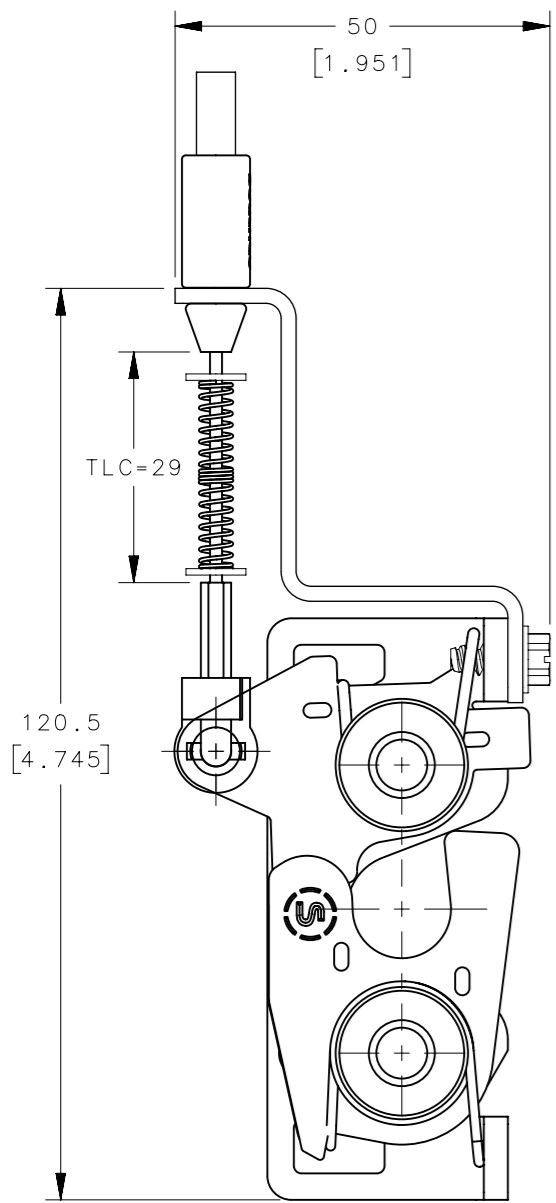
TO MOUNT CABLE WITH SPRING ON ROTARY LATCH END



R4-30-41-502-M  
(INTEGRATED LONG BRACKET)

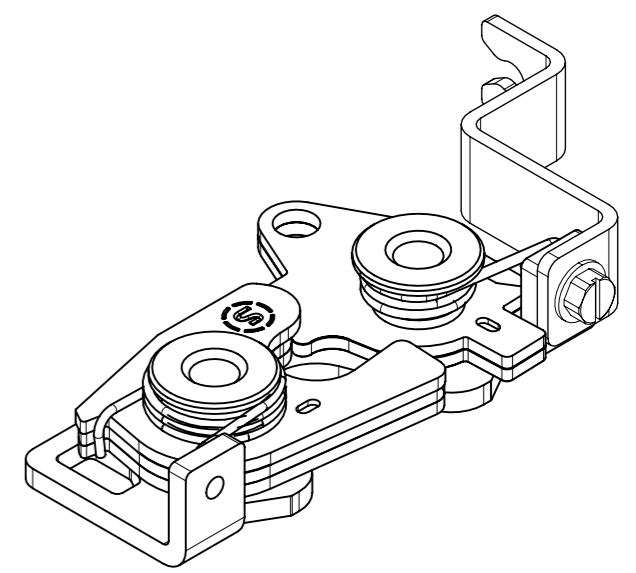
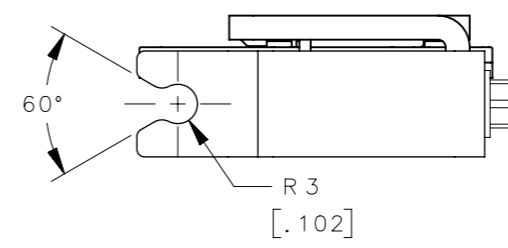


R4-30-41-506-M  
(INTEGRATED LONG BRACKET & BUMPER)

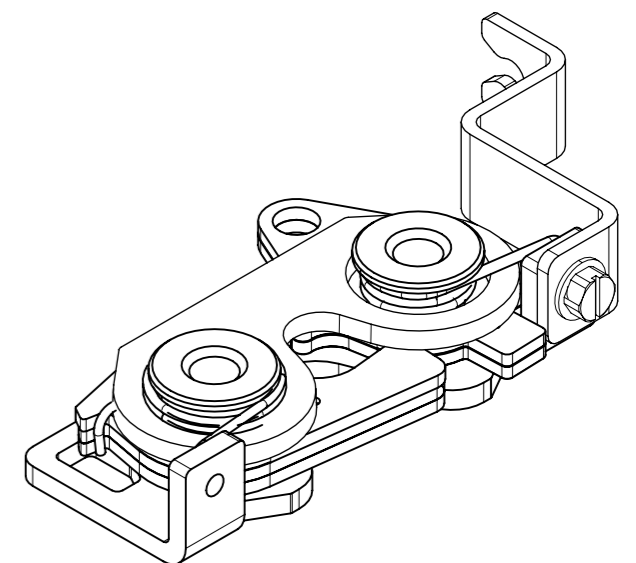


**SHORT BRACKET**

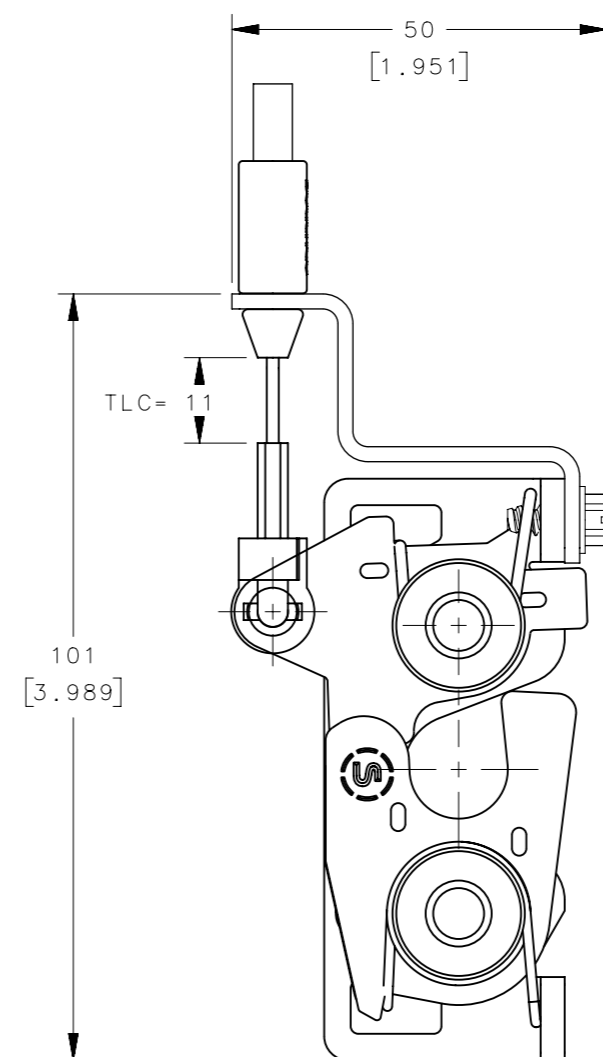
TO MOUNT CABLE WITH NO SPRING ON ROTARY LATCH END



R4-30-41-503-M  
(INTEGRATED SHORT BRACKET)



R4-30-41-507-M  
(INTEGRATED SHORT BRACKET & BUMPER)



CPB NUMBER	THIRD ANGLE PROJECTION		
	MILLIMETERS [IN]		
SURFACE AREA	TOLERANCES UNLESS OTHERWISE NOTED	DESCRIPTION	
VOLUME	ALL DIMENSIONS WITHOUT TOLERANCES ARE FOR REFERENCE ONLY.	R4 LATCH ASSEMBLY -BOTTOM PULLBACK LEFT HAND ACTUATION	
PROPRIETARY ITEM	PER ASME Y14.5M-2009	SIZE A3	SYSTEM NX
EXCEPT FOR USES EXPRESSLY GRANTED IN WRITING, INFORMATION DISCLOSED HEREON IS CONFIDENTIAL AND ALL RIGHTS, PATENT AND OTHERWISE, ARE RESERVED BY SOUTHCO, INC.		DWG NO. J-R4-30-40-501	
		DRAWN BY ACH/CMS	DATE 18JUNE2018
		SCALE 1:1	SHEET 2 OF 2